



## RE: CHARTERS ROAD – STREETSCAPE – T02-2023 -ADDENDUM #3

June 14, 2023

TO WHOM IT MAY CONCERN:

The following is an addendum to all bidders. **Bidders are to reference receipt of Addendum #3 in their submission.**

Please note the following questions and answers, clarifications and revisions and revised drawings for the above noted Tender are to be known as Addendum No. 3. The following clarifications, questions and answers, changes, and additions are to apply to all documents, and shall be considered by the bidders in preparing their submissions.

### **Additions, Revisions, and Clarifications**

1. The following drawing sheets have been updated with various minor design modifications or note changes for clarification. All changes to the drawings have been identified with a cloud line around the change.

Sheet 14	Revision 1	WATERMAIN STA 2+000 TO STA 2+120
Sheet 15	Revision 1	WATERMAIN STA 2+120 TO STA 2+210
Sheet 16	Revision 1	WATERMAIN STA 2+210 TO STA 2+360
Sheet 17	Revision 1	WATERMAIN STA 2+360 TO STA 2+480

2. An updated Appendix 1 - Form of Tender is attached with updated payment items and quantity revisions.
3. An updated Supplementary Specifications section to include water works is attached.

UNIT  
PRICE  
CONTRACT

**TENDER T02-2023**  
**CHARTERS ROAD - STREETSCAPE**  
**SOOKE, B.C.**  
**FORM OF TENDER**

**REVISED ADD #3 FT**  
**PAGE 5 OF 16**  
**MAY 2023**

DIVISION 1 - GENERAL REQUIREMENTS						
Item No.	Section	Specification Title	Unit	Qty	Unit Price	Amount
<b>01 10 00SS General Requirements</b>						
1.1	1.2S	Layout Survey, Quantity Survey, Volume Calculations and Record Survey	Lump Sum	1		
<b>01 51 01 Temporary Utilities and Lighting</b>						
1.2	1.6.1	Supporting Utilities Underground/Overhead	Lump Sum	1		
<b>01 52 01 Temporary Structures</b>						
1.3	1.6.2S	Mobilization/Demobilization	Lump Sum	1		
<b>01 53 01 Temporary Facilities</b>						
1.4	1.9.2S	By-Pass Pumping Sanitary System	Lump Sum	1		
<b>01 55 00 Traffic Control, Vehicle Access and Parking</b>						
1.5	1.5.2S	Traffic Control, Vehicle Access and Parking	Lump Sum	1		
<b>01 57 01 Environmental Protection</b>						
1.6	1.6.2S	Environmental Protection	Lump Sum	1		
<b>Sub-Total</b>					\$	

DIVISION 3 - CONCRETE						
Item No.	Section	Specification Title	Unit	Qty	Unit Price	Amount
<b>03 30 20 Concrete Walks, Curb And Gutter</b>						
2.1	1.4.3	<b>Hand Formed / Machine Laid Curb and Gutter</b> Barrier Concrete Barrier - MMCD Type C4 - Including Granular Base, Driveway Drops, & Let Downs.	Lineal Metre	1075		
2.2	1.4.5S	<b>Concrete Sidewalks, Infill Strips and Walkways</b> Including Ramps Where Applicable. MIN. 100mm Thickness c/w 100mm Base.	Square Metre	1685		
2.3	1.4.5S	<b>Pattern Concrete Sidewalks, Infill Strips and Walkways</b> Including Ramps Where Applicable. MIN. 100mm Thickness c/w 100mm Base.	Square Metre	85		
2.4	1.4.6	<b>Driveways and Driveway Crossings</b> 150 mm Thickness c/w Granular Base. Crossings To Be c/w Ramps.	Square Metre	415		
2.5	1.4.8	<b>Adjustments</b> Adjustments To Frames, Covers, Lids, Valve, Junction Boxes, Catch basins, Inspection Chambers.	Each	20		
<b>03 30 53 Cast-In-Place Concrete</b>						
2.6	1.5.6S	<b>Mortared Rock Wall - Optional</b>	Square Meters	200		

UNIT  
PRICE  
CONTRACT

**TENDER T02-2023**  
**CHARTERS ROAD - STREETSCAPE**  
**SOOKE, B.C.**  
**FORM OF TENDER**

**REVISED ADD #3 FT**  
**PAGE 6 OF 16**  
**MAY 2023**

03 40 01 Pre-Cast Concrete						
2.7	1.4.3	<b>Redi-Rock Wall Blocks</b> Excavation and Backfill under 31 23 01	Square Metre	650		
2.8	1.4.5S	<b>Concrete No-Post Barrier</b> <b>Removal and Disposal Offsite</b>	Lump Sum	1		
				<b>Sub-Total</b>	\$	

DIVISION 26 - ELECTRICAL						
Item No.	Section	Specification Title	Unit	Qty	Unit Price	Amount
26 56 01 Roadway Lighting						
3.1	1.9.1/ 34 41 13 1.9.1	<b>Roadway Lighting</b>	Lump Sum	1		
				<b>Sub-Total</b>	\$	

DIVISION 31 - EARTHWORK						
Item No.	Section	Specification Title	Unit	Qty	Unit Price	Amount
31 11 01 Clearing and Grubbing						
4.1	1.4.1, 1.4.2	<b>Clearing and Grubbing</b>	Lump Sum	1		
4.2	1.4.1, 1.4.2	<b>Isolated Stump Removal</b>	Each	36		
4.3	1.4.1, 1.4.2	<b>Isolated Tree Removal</b>	Each	12		
31 22 01 Site Grading						
4.4	1.4.1	<b>Topsoil Stripping and Disposal/Reuse</b>	Cubic Metre	200		
31 22 16 Reshaping Granular Roadbed						
4.5	1.4.1	<b>Reshaping Granular Roadbed</b>	Square Metre	3076		
31 23 01 Excavating, Trenching and Backfilling						
4.6	1.10.3	<b>Over excavating - Optional</b> Including Backfilling	Cubic Metre	275		
31 23 17 Rock Removal						
4.7	1.6.3	<b>Mass Rock - Optional</b>	Cubic Metre	50		
31 24 13 Roadway Excavation, Embankment and Compaction						
4.8	1.8.4	<b>Remove Existing Asphalt</b> Pavement, Sidewalks, Utility Strips, Driveways (Including Saw cutting)	Square Metre	4800		
4.9	1.8.4	<b>Remove Existing Concrete</b> Curbs and Gutters	Lineal Metres	60		
4.10	1.8.5	<b>Common Excavation - Gravels</b> On-Site Re-Use	Cubic Metre	225		
4.11	1.8.5	<b>Common Excavation</b> Off-Site Disposal	Cubic Metre	3500		
4.12	1.8.14S	<b>Removal of Existing Driveway Culverts</b>	Lineal Metres	214		
4.13	1.8.15S	<b>Removal of Existing Throug Stream Culverts</b>	Lineal Metres	50		
4.14	1.8.16S	<b>Asbestos Cement Pipe Removal and Disposal</b>	Lineal Metres	90		

DIVISION 32 - ROAD AND SITE IMPROVEMENTS						
Item No.	Section	Specification Title	Unit	Qty	Unit Price	Amount
<b>32 11 16.1 Granular Sub-Base</b>						
5.1	1.4.2	<b>Granular Sub-Base - Roadway</b> Variable Thickness for Roads or Sidewalks	Cubic Metre	2000		
5.2	1.4.2	<b>25mm Clear Crush Rock -</b> Including Non-Woven Geotextile Wall - Block Infill	Tonne	220		
5.3	1.4.2	<b>75mm Select, Well Graded, Crushed Rock</b> Wall - Leveling Pad	Tonne	170		
5.4	1.4.2	<b>150 - 300mm Minus Well Graded Crush Rock</b> Wall	Tonne	8000		
5.5	1.4.2	<b>75 - 450mm Minus Well Graded Crush/Blast Rock</b> Wall	Tonne	3500		
5.6	1.4.2	<b>Pit Run Gravel - Roadway</b> Variable Thickness for Roads or Sidewalks	Tonne	275		
<b>32 11 23 Granular Base</b>						
5.7	1.4.1	<b>Granular Base Roadway</b> Variable Thickness for Roads or Sidewalks	Tonne	1732		
<b>32 12 13.1 Asphalt Tack Coat</b>						
5.8	1.5.1	<b>Asphalt Tack Coat</b>	Square Metres	6670		
<b>32 12 13.2 Asphalt Prime</b>						
5.9	1.5.1	<b>Asphalt Prime</b>	Square Metres	6670		
<b>32 12 16 Hot-Mix Asphalt Concrete Paving</b>						

UNIT  
PRICE  
CONTRACT

**TENDER T02-2023**  
**CHARTERS ROAD - STREETSCAPE**  
**SOOKE, B.C.**  
**FORM OF TENDER**

**REVISED ADD #3 FT**  
**PAGE 8 OF 16**  
**MAY 2023**

5.10	1.5.1S, 1.5.2	<b>Asphalt Pavement - Base Course</b> LC#1 (40mm Compacted Thickness)	Square Metres	6670		
5.11	1.5.1S, 1.5.2	<b>Asphalt Pavement - Upper Course</b> UC #1 (40mm Compacted Thickness)	Square Metres	6670		
5.12	1.5.3	<b>Asphalt Sidewalk</b> 50mm Thick Hot Mix Asphalt, Including Ramps	Square Metres	100		
5.13	1.5.3	<b>Asphalt Driveway</b> 50mm Thickness Hot Mix Asphalt	Square Metres	100		
5.14	1.5.4	<b>Extruded Asphalt Curb (Optional)</b>	Lineal Metres	50		
<b>32 17 23 Painted Pavement Markings</b>						
5.15	1.5.3	<b>Thermoplastic Pavement Markings</b>	Lump Sum	1		
<b>32 31 13 Chain Link Fences &amp; Gates</b>						
5.16	1.5.4S	<b>MoTi Steel Sidewalk Fencing</b>	Lineal Metres	130		
5.17	1.5.4S	<b>Mortar Rock Hand Railing - MMCD C14 - Optional</b>	Lineal Metres	200		
<b>32 91 21 Topsoil and Finish Grading</b>						
5.18	1.4.1S	<b>Growing Medium</b> (Topsoil 150mm)	Square Metres	1480		
<b>32 92 20 Seeding</b>						
5.19	1.8.1	<b>Seeding</b>	Square Metres	1480		
Sub-Total					\$	

**DIVISION 33 - UTILITIES**

Item No.	Section	Specification Title	Unit	Qty	Unit Price	Amount
<b>33 11 01 Waterworks</b>						
6.1	1.8.1, 1.8.1	<b>Watermain DI</b> 300 mm Diameter Depth of Main 0 - 2m. Imported Granular Backfill	Lineal Metres	13		
6.2	1.8.1, 1.8.2	<b>Watermain PVC</b> 250 mm Diameter Depth of Main 0 - 2m. Imported Granular Backfill	Lineal Metres	470		
6.3	1.8.1, 1.8.2	<b>Watermain PVC</b> 200 mm Diameter Depth of Main 0 - 2m. Imported Granular Backfill	Lineal Metres	17		
6.4	1.8.1, 1.8.3	<b>Watermain PVC</b> 150 mm Diameter Depth of Main 0 - 2m. Imported Granular Backfill	Lineal Metres	3		
6.5	1.8.3	<b>Gate Valves 200 mm</b> c/w Mechanical Restraints	Each	2		
6.6	1.8.3	<b>Gate Valves 250 mm</b> c/w Mechanical Restraints	Each	9		
6.7	1.8.3	<b>Gate Valves 300 mm</b> c/w Mechanical Restraints	Each	2		
6.8	1.8.3	<b>Bend</b> 250mm diameter, 45 Degree, PVC c/w mechanical restraints and thrust blocks	Each	2		

6.9	1.8.3	<b>Tee</b> 250x250x150mm Diameter	Each	1		
6.10	1.8.3	<b>Tee</b> 250x250x200mm Diameter	Each	2		
6.11	1.8.3	<b>Tee</b> 300x300x250mm Diameter	Each	1		
6.12	1.8.3	<b>Reducer</b> 250mm X 200mm diameter c/w mechanical restraints	Each	1		
6.13	1.8.3	<b>Permanent Capping</b> 200mm Diameter, Existing AC	Each	4		
6.14	1.8.3	<b>Blind Flange Cap</b> 300mm diameter (DI) c/w Mechanical restraints and thrust blocks	Each	1		
6.15	1.8.4S	<b>Water Service Connections</b> 19mm	Each	10		
6.16	1.8.4S	<b>Water Service Connections</b> 50mm	Each	2		
6.17	1.8.5S, 1.8.6S	<b>Air-Release Valve &amp; Chamber</b> per CRD Standard Drawing 1.1	Each	2		
6.18	1.8.12	<b>Watermain Tie -In</b> Pipework by Contractor. Couplers & fittings Supplied By Contractor. Tie in completed by CRD Forces	each	2		
6.19	1.8.14S, 1.8.2	<b>Hydrant Assembly</b> Per CRD STD DWG 1.3	Each	5		
6.20	1.8.16S	<b>Hydrant Removal</b> Offsite disposal	Each	4		
6.21	1.8.17S	<b>Cap and Abandon Existing</b> Watermains and Valves	Lump Sum	1		
6.22	1.8.18S	<b>Cap with Flush Assembly</b> as Per CRD STD DWG 1.5 and MMCD W8	Each	2		
<b>33 34 01 Sewage Force mains</b>						
6.23	1.8.2, 1.8.3	<b>Force main Pipe HDPE</b> 100mm Diameter	Lineal Metres	194		
6.24	1.8.3	<b>100mm Gate Valve</b>	Each	4		
6.25	1.8.3	<b>100mm x 100mm X 100mm Tee</b>	Each	2		
6.26	1.8.3	<b>Caps</b> 100mm HDPE	Each	5		
6.27	1.8.3	<b>Bend</b> 100mm Degree of Bend. 45 Degree HDPE	Each	2		
6.28	1.8.5	<b>Air Valve</b> As per DoS STD DWG SD-SS02	Each	1		
6.29	1.8.5	<b>Reinstate Low Point Drain Valve</b>	Each	1		
6.30	1.8.10	<b>Force main Tie -In</b> 100mm Diameter Into Existing 100mm Diameter Sanitary Sewer or Existing Manhole	Each	3		
<b>33 40 01 Storm Sewers</b>						
6.31	1.6.1, 1.6.2	<b>Drainage Pipe PVC SDR</b> 200mm Diameter, Installed at Depth of 1-3m c/w Imported Backfill, 100mm - 19mm Granular Base and 250mm - 75mm Minus Pit Run Gravel.	Lineal Metres	220		

UNIT  
PRICE  
CONTRACT

**TENDER T02-2023**  
**CHARTERS ROAD - STREETSCAPE**  
**SOOKE, B.C.**  
**FORM OF TENDER**

**REVISED ADD #3 FT**  
**PAGE 10 OF 16**  
**MAY 2023**

6.32	1.6.1, 1.6.2	<b>Drainage Pipe PVC SDR Perforated</b> 150mm Diameter, Installed at Depth of 1-3m c/w Imported Backfill, 100mm - 19mm Granular Base and 250mm - 75mm Minus Pit Run Gravel.	Lineal Metres	170		
6.33	1.6.1, 1.6.2	<b>Drainage Pipe PVC SDR</b> 300mm Diameter, Installed at Depth of 0-2m c/w Imported Backfill, 100mm - 19mm Granular Base and 250mm - 75mm Minus Pit Run Gravel.	Lineal Metres	265		
6.34	1.6.1, 1.6.2	<b>Drainage Pipe PVC SDR</b> 250mm Diameter, Installed at Depth of 1-3m c/w Imported backfill, 100mm - 19mm Granular Base and 250mm - 75mm Minus Pit Run Gravel.	Lineal Metres	45		
6.35	1.6.3, 1.6.2	<b>Drainage Service Connections</b> 100mm & 150mm Diameter Services per Service Connection Detail. Including Excavation, Disposal, Supply of Units, Cast In Place Concrete, Pipes, Fittings, Related Materials, Bedding, Backfill, Cleaning, Tie-In To Existing, Surface All Other Related Works To Be Included.	Each	8		
6.36	1.6.5	<b>Catch basin Lead</b> 150mm Diameter	Lineal Metres	75		
6.37	1.6.12S	<b>Concrete filled Jute Sack Headwall</b>	Each	1		
<b>33 42 13 Pipe Culvert</b>						
6.38	1.5.1, 1.5.2	<b>1.8m X1.8m Concrete Box Culvert</b> - Includes 19mm Minus Crush and Coho Gravel as per Contract Drawings <b>(Alternate sizes include 2.1m x 1.8m, 2.1m x 2.1m &amp; 2.4mx2.1m)</b>	Lineal Metres	21		
<b>33 44 01 Manholes and Catch basins</b>						
6.39	1.5.1.1S	<b>Manhole</b> Base, Lid, Slab, Cover, Riser, Frame, and All Other Components of a Complete Manhole 1050mm Diameter. Excavation, Fill.	Each	10		
6.40	1.5.1.1S	<b>Manhole</b> Base, Lid, Slab, Cover, Riser, Frame, and All Other Components of a Complete Manhole 1200mm Diameter. Excavation, Fill.	Each	1		
6.41	1.5.2	<b>Top Inlet Catch Basin</b> Standard Drawing S11	Each	13		
6.42	1.5.3	<b>Inspection Chamber</b> Standard Drawing S9,S12	Each	8		
Sub-Total					\$	

Revise the following Master Municipal Specifications 2019 Edition:

SECTION	SUB SECTION	TITLE	SUPPLEMENTARY SPECIFICATION
01 10 00SS		<b>General Requirements</b>	
	1.0	General	<b>Add Clause 1.1:</b> "Section 01 10 00SS addresses additional measurement and payment clauses which do not apply to other specification sections"
	1.2	Payment	<b>Add Clause 1.2:</b> " .1 Payment shall be based on the Lump Sum bid in the Schedule of Quantities and Unit Prices as measured and accepted by the Contract Administrator. Payment shall be accepted as full compensation for everything furnished and done. .2 Payment of the lump sum bid will be paid in equal amounts each month. .3 The Contractor is responsible for all staking and survey layout and quantity calculations required for the completion of all Work, as shown on the Contract Drawings, and to affect incidental field adjustments. .4 The unit price bid shall include, but not be limited to; all survey layout, staking, cross sections, calculations of volumes required for tender items, coordination required for the completion of the work, record survey, and all other work and materials incidental and necessary to complete the Work to provide a functional system. Grade sheets, digital RAW and CAD file data is to be provided to the Contract Administrator 10 Days prior to executing the work. .5 Any calculations necessary shall be performed by the Contractor and shall be provided to the Contract Administrator at any time upon request. Information shall include both text files and any CAD drawings."
01 52 01		<b>Temporary Structures</b>	
	1.1	Section Includes	<b>Add Clause 1.1.4:</b> "Mobilization/Demobilization."



	1.6	Payment	<p><b>Add Clause 1.6.2:</b> "Payment for mobilization and demobilization shall include all the Contractor costs of mobilization at the beginning of the project and the cost of demobilization at the end of the project.</p> <p>1. Included in the mobilization are such items as bonding, insurance, permits, moving personnel, equipment and materials to the site, setting up temporary facilities and all preparation for performing the Work.</p> <p>2. Included in demobilization are preparation and submission of record drawings, operation and maintenance manuals, removal of all personnel, equipment and materials and cleanup of the Site and the Work.</p> <p>3. The lump sum price bid for this work shall be relative to the costs involved but shall not exceed ten percent of the Tender Price.</p> <p>4. Payment shall be made as follows, as approved by the Contract Administrator:</p> <p>1. 60% of the lump sum bid will be included in the first progress payment certificate.</p> <p>2. 40% of the lump sum bid will be included in the final progress payment certificate.</p> <p>5. The Contract Administrator may at their discretion authorize partial payment if mobilization or demobilization is not complete.</p> <p>6. The cost of other items specified under General Requirements shall be considered incidental to the work and separate payment will not be made for any other items in the General Requirements unless specifically noted in the Schedule of Quantities and Prices."</p>
01 53 01		Temporary Facilities	
	1.1	Section Includes	<b>Add Clause 1.1.5:</b> "Temporary Utility Pole Support During Construction."
	1.9	Payment	<p><b>Add Clause 1.9.2:</b>"Payment for all work related to the management of sanitary flows (noise attenuating by-pass pumping isolation, blocking, diverting, etc.) including preparation of a approved bypass plan, and the supply installation, maintenance and removal of the temporary system.</p> <p>The Contractor will be entitled to 50% of the payment item on the first progress payment after the bypass system is in place and 50% on the first progress payment following dismantling and removal of the bypass system."</p>

	1.11	Temporary Utility Pole Support During Construction	<p><b>Add Clause 1.11:</b> "Temporary Utility Pole Support During Construction."</p> <p><b>Add Clause 1.11.1:</b> "Provide temporary support for Utility Poles (both power and communications) during construction as required to allow for work adjacent to poles."</p> <p><b>Add Clause 1.11.2:</b> "Contractors working on utility poles must be able to perform switching on the BC Hydro system."</p>
01 55 00		<b>Traffic Control, Vehicle Access and Parking</b>	
	1.4	Traffic Management	<b>Add Clause 1.4.14.1:</b> "The Contractor to prepare a Traffic Management Plan in accordance with the provided "Charters Road and Church Road Constructions Traffic Management Strategy" prepared by ISL."
	1.5	Payment	<b>Add Clause 1.5.2:</b> "Payment for traffic control will be progressed monthly using a percentage based on the overall completion of the project as determined by the Contract Administrator and Baseline Construction Schedule"
01 57 01		<b>Environmental Protection</b>	
	1.4	Environmental Protection	<p><b>Add Clause 1.4.4:</b></p> <p>"Archaeological Assessment Compliance:</p> <ol style="list-style-type: none"> <li>1. Portions of the Work are located in areas considered to have high archaeological potential and require considerations prior to and during construction.</li> <li>2. Construction monitoring by the Archaeological Consultant and representatives from Indigenous communities (that have interests in the area) will be conducted during the Work in the areas considered to have high archaeological potential. This work will be conducted under an Heritage Conservation Act (HCA) permit obtained by the Archaeological Consultant on behalf of the Owner. <ol style="list-style-type: none"> <li>a. Any work requiring First Nation representatives will require at least five business days of notification prior to fieldwork.</li> <li>b. The Archaeological Consultant and First Nation representative's services and related costs will be provided and paid for by the Owner."</li> </ol> </li> </ol>
	1.4	Environmental Protection	<p><b>Add Clause 1.4.5:</b></p> <p>"Archaeological Excavation Methods:</p> <p>The following applies for portions of the project alignment, identified during monitoring, to have the potential to contain buried archaeological materials (e.g. buried soil horizons):</p> <ol style="list-style-type: none"> <li>1. Toothed buckets may be used to remove obstructions</li> </ol>

			<p>(pavement, boulders, etc.) prior to reaching potentially culture-bearing sediments. Potentially culture-bearing sediments will be removed with a finishing bucket, in maximum 10 cm vertical lifts, to allow the archaeologist to observe any exposed features or intact deposits and collect artifact provenience in the most precise manner possible. The horizontal extent of lifts will not exceed 3 m. Deposits containing, or with the potential to contain, archaeological materials (i.e., archaeological deposits, or suspected archaeological deposits), will be cast to the side of the trench separately (as practical) from non-archaeological deposits, so that they can be inspected by the archaeological crew.</p> <p>2. In the event that intact archaeological deposits or features are identified, mechanical excavation will cease in the vicinity of the discovery and excavation will proceed by hand or other methods in consultation with the Branch. The Field Director may use discretion to determine the amount of material to hand excavate. Typically, 10% of intact archaeological deposits will be hand excavated. Other sample sizes may be determined in consultation with the Branch. If more than 20 cubic metres of archaeological deposits are identified, the Branch and Indigenous groups will be contacted. Work may not proceed without Branch approval.</p> <p>3. 100% of displaced intact archaeological deposits will be screened through 6 mm (0.25 in.) mesh and/or hand sorted using a trowel or rake. Minimally, 25% of displaced disturbed archaeological deposits will be raked and/or sample screened. In disturbed contexts, the Field Director may use discretion to determine the amount of material to be processed. In the event that displaced disturbed archaeological deposits cannot be reinterred within the location of discovery and must be transported elsewhere, they may need to be raked and/or screened entirely.</p> <p>3. The Contractor shall schedule the order of work to provide options to continue with production at an alternate activity or project location, should Archaeological findings (e.g. human remains, wet sites materials, etc.) be encountered and a work stoppage. The contractor should account for a work-free buffer zone (distance will be provided by the project archaeologist but is generally 10 metres) related to any onsite archaeological find.</p> <p>4. No excavation work shall proceed in absence of a Stantec archaeologist unless arrangements have been made in advance."</p>
--	--	--	---

	1.4	Environmental Protection	<p><b>Add Clause 1.4.6:</b></p> <p>"Archaeological Materials:</p> <p>1. In the event intact material, culture-bearing deposits, or features are identified by the Contractor and confirmed by the Archaeological Consultant, mechanical excavation will cease, and excavation may proceed by hand or other methods as provided under the guidance of the Archaeological Consultant.</p> <p>a. In the event cultural material is identified, no excavation work shall proceed in absence of the Archaeological Consultant unless arrangements have been made in advance.</p> <p>b. In the event cultural material is identified, the Contractor will provide an area within the HCA permit area to stockpile excavated materials for the archaeological team to process.</p> <p>c. In the event cultural material is identified this will be considered Change."</p>
	1.4	Environmental Protection	<p><b>Add Clause 1.4.7:</b></p> <p>"Ancestral Remains:</p> <p>1. If Ancestral remains are identified during any part of the Work, the Contractor must immediately cease work in the location of the remains and secure the area to prevent additional disturbance as instructed by the Archaeological Consultant.</p> <p>2. The Archaeological Consultant will notify the Owner, First Nations, and the Archaeological Branch and RCMP (if necessary) to determine the appropriate next steps."</p>
	1.4	Environmental Protection	<p><b>Add Clause 1.4.8:</b> "Environmental Protection Plan to be prepared in accordance with "Environmental Management Plan for Throup Stream / Charter Road Culvert Replacement." prepared by Swell Environmental Consulting"</p>
	1.4	Environmental Protection	<p><b>Add Clause 1.4.9:</b> "Removal and disposal of Asbestos Cement pipe shall follow current WCB requirements."</p>
	1.6	Payment	<p><b>Add Clause 1.6.2:</b> "Environmental Protection Plan to be prepared in accordance with "Environmental Management Plan for Throup Stream / Charter Road Culvert Replacement." prepared by Swell Environmental Consulting. Payment for Environmental Protection Plan shall be lump sum and includes all work to prepare, deliver and enact an Environmental Management Plan prepared by a registered qualified environmental professional (QEP) that contains the following components: tree protection plan; sensitive ecosystem management plan; sediment and erosion control plan; invasive species management plan; waste disposal; storage areas and laydown area management plan; equipment idling control plan; hazardous material control and spill response plan."</p>

DIVISION 3 - CONCRETE			
03 30 20		Concrete Walks, Curbs and Gutters	
	1.4	Measurement and Payment	<b>Revise Clause 1.4.5 to read:</b> "Payment for infill concrete sidewalks, ramps, and medians includes the supply and placing of concrete, granular base and will cover all straight and curved sections and will be made separately for each specified type, thickness and finish as shown on the contract drawings."
03 40 01		Pre-Cast Concrete	
	1.4	Measurement and Payment	<b>Revise clause 1.4.5 to read:</b> "Payment for the removal and offsite disposal of the concrete no-post barriers along Charters Road will be made by lump sum and will include all materials, equipment and labour for the removal and offsite disposal of the barriers."
	3.0	Execution	<b>Add Clause 3.2.3:</b> " Contractor to confirm limits of retaining wall subgrade under the direction of the geotechnical engineer to confirm ultimate area of wall prior to submitting final order of redi-rock wall blocks for delivery to site."
03 30 53		Cast-In-Place Concrete	
	1.5	Measurement and Payment	<b>Add Clause 1.5.6:</b> "Payment for Mortared Rock Wall shall include, but not be limited to; supply and installation of the mortared rock retaining wall including the subgrade preparation, drain and grouted cap, drain rock, railing sleeves, concrete leveling cap, and all other work and materials incidental and necessary to complete the Work to provide a functional system all as shown on the Contract Drawings. Payment shall be based on the Unit Price per square meter bid for each wall height. Wall height is measured from finished grade to top of wall. Payment shall be accepted as full compensation for everything furnished and done."
DIVISION 31 - EARTHWORK			
31 24 13		Roadway Excavation, Embankment & Compaction	
	1.8	Measurement and Payment	<b>Revised Clause 1.8.5 (1) to Read:</b> "In-place volume will be calculated for payment from cross-sections at sufficient and equal intervals provided by the Contractor and submitted to the Contract Administrator monthly for review. Cross sections are to be provided in a DWG file containing all survey points, existing surface, cleared/ grubbed/ stripped surface, and surface, and bottom of excavation surface. A summary of calculations is to be provided with the submission of the cross-section information."
	1.8	Measurement and Payment	<b>Delete Clause 1.8.5 (4)</b>

	1.8	Measurement and Payment	<b>Add Clause 1.8.14:</b> " Payment for the removal of existing driveway and roadway culverts will be made by lineal meter of culvert removed as indicated on the contract drawings. Payment to include all labour, equipment and materials required for the offsite disposal of each culvert type."
	1.8	Measurement and Payment	<b>Add Clause 1.8.15:</b> " Payment for the removal of existing Throup Stream culverts will be made by lineal meter of culvert removed as indicated on the contract drawings. Payment to include all labour, equipment and materials required for the offsite disposal of each culvert type."
	1.8	Measurement and Payment	<b>Add Clause 1.8.16:</b> " Payment for the removal of asbestos cement pipe will be made by lineal meter of pipe removed as indicated on the contract drawings. Payment to include all labour, equipment and materials required for the offsite disposal following all work safe regulations, bylaws, laws, and best practices."
<b>31 32 19</b>		<b>Geosynthetics</b>	
	3.0	Execution	Add Clause 3.1.5: "Installation of geosynthetic material associated with MSE Redi-rock lock block wall is to conform to the contract drawings and redi-rock manufacturers recommendations as approved by then Contract Administrator."
<b>DIVISION 32 - ROAD AND SITE IMPROVEMENTS</b>			
<b>32 11 16.1</b>		<b>Granular Subbase</b>	
	2.1	Specified Materials	<b>Add the following to end of clause 2.1.1:</b> "(9) 25mm Clear Crush Rock (10) 75mm Select, Well Graded, Crushed Rock (11) 150 - 300mm Minus Well Graded Crush Rock (12) 75 - 450mm Minus Well Graded Crush/Blast Rock"
<b>32 12 16</b>		<b>Hot-Mix Asphalt Concrete Paving</b>	
	1.5	Measurement and Payment	<b>Revised Clause 1.5.1 to read:</b> "Payment for asphaltic concrete paving includes all construction joint preparation, supply and placing of the asphaltic concrete, compaction, adjusting and cleaning of frames, covers and lids of all castings affected and taped temporary pavement markings. Measurement for asphaltic concrete paving will be by square meter of actual placed material as approved by the contract administrator."
<b>32 31 13</b>		<b>Chain Link Fences &amp; Gates</b>	
	1.5	Measurement and Payment	<b>Revise Clause 1.5.4 to include:</b> "MOTI Drawing 2891-2 Standard Steel Bicycle Fence."

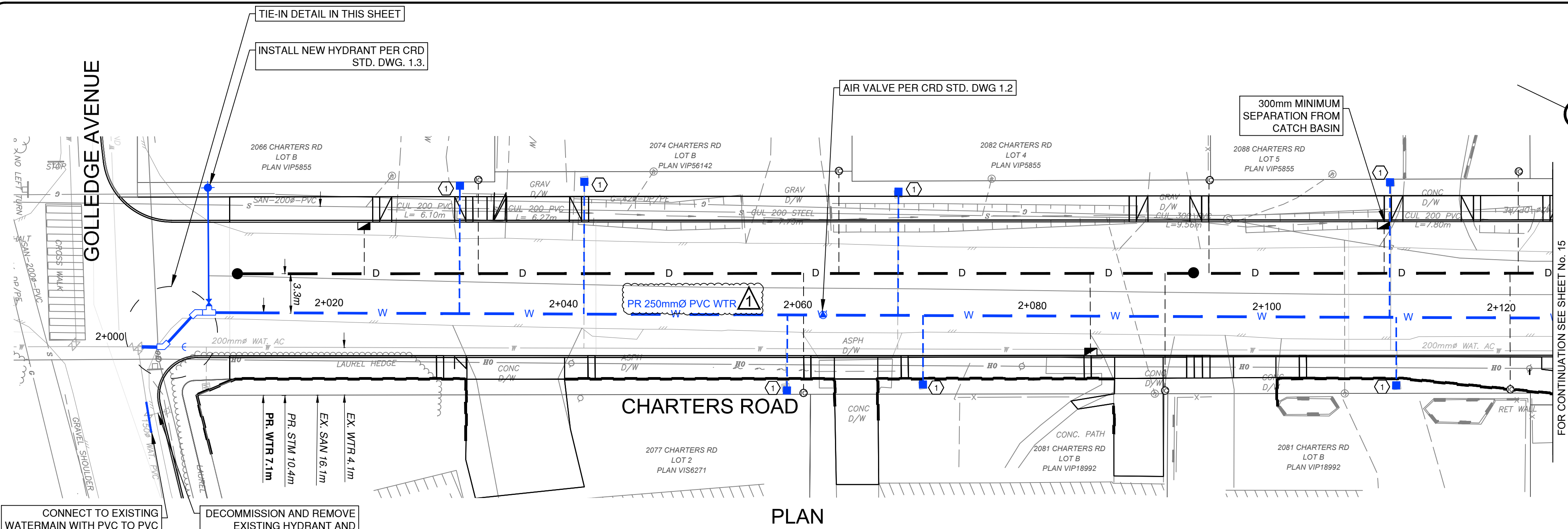


32 91 21		Topsoil and Finish Grading	
	1.4	Measurement and Payment	<b>Revised Clause 1.4.1 to read:</b> "Payment for growing medium and imported topsoil will be made separately for each type of growing medium and imported topsoil specified, and includes supply of materials, on-site handling, placement to thickness specified, application of fertilizers and finished grading. Payment for growing medium and topsoil will be made by actual area placed and compacted by landscape roller to the specified thickness as approved by the Contract Administrator."
<b>DIVISION 33 - UTILITIES</b>			
33 11 01		Waterworks	
	2.1	General	<b>Add Clause 2.1.4 to read:</b> "All Materials are to confirm to the latest version of the Capital Regional District's 'Appendix A Approved Materials' located on the CRD website."
	1.8	Measurement and Payment	<b>Revise Clause 1.8.4:</b> Replace references to Standard Drawings W2a and W2b with Capital Regional District Standard Drawings 2.4, 2.5, and 2.6.
	1.8	Measurement and Payment	<b>Revise Clause 1.8.5:</b> Replace reference to Standard Drawings W5 to W7 and W10 with Capital Regional District Standard Drawing 1.2 and 1.5."
	1.8	Measurement and Payment	<b>Revise Clause 1.8.6:</b> Replace reference to Standard Drawings W6 and W7 with Capital Regional District Standard Drawing 1.2.
	1.8	Measurement and Payment	<b>Revise Clause 1.8.14:</b> Replace reference to Standard Drawings W4 with Capital Regional District Standard Drawing 1.3.
	1.8	Measurement and Payment	<b>Add Clause 1.8.16:</b> "Payment for removal and offsite disposal of existing valve boxes and risers and fire hydrants includes excavation, backfilling and, where applicable, capping and temporary and permanent paving surface restoration to the satisfaction of the Contract Administrator."
	1.8	Measurement and Payment	<b>Add Clause 1.8.17:</b> "Payment for abandonment of existing valves identified on the contract drawings and abandonment of existing watermain will include all labour, equipment, and materials required to complete the abandonment to the satisfaction of the Contract Administrator. Payment will be made by lump sum upon completion of the works."
	1.8	Measurement and Payment	<b>Add Clause 1.8.18:</b> "Payment for cap and flush valve assembly is to include the cap with 50mm diameter tap, tie rods, thrust blocks as outlined in standard drawing W8. The flush assembly piping, valves, boxes, and assembly is as per CRD standard drawing 1.5. Payment to include all labour, equipment, and materials required to complete a functional system to the satisfaction of the Contract Administrator."

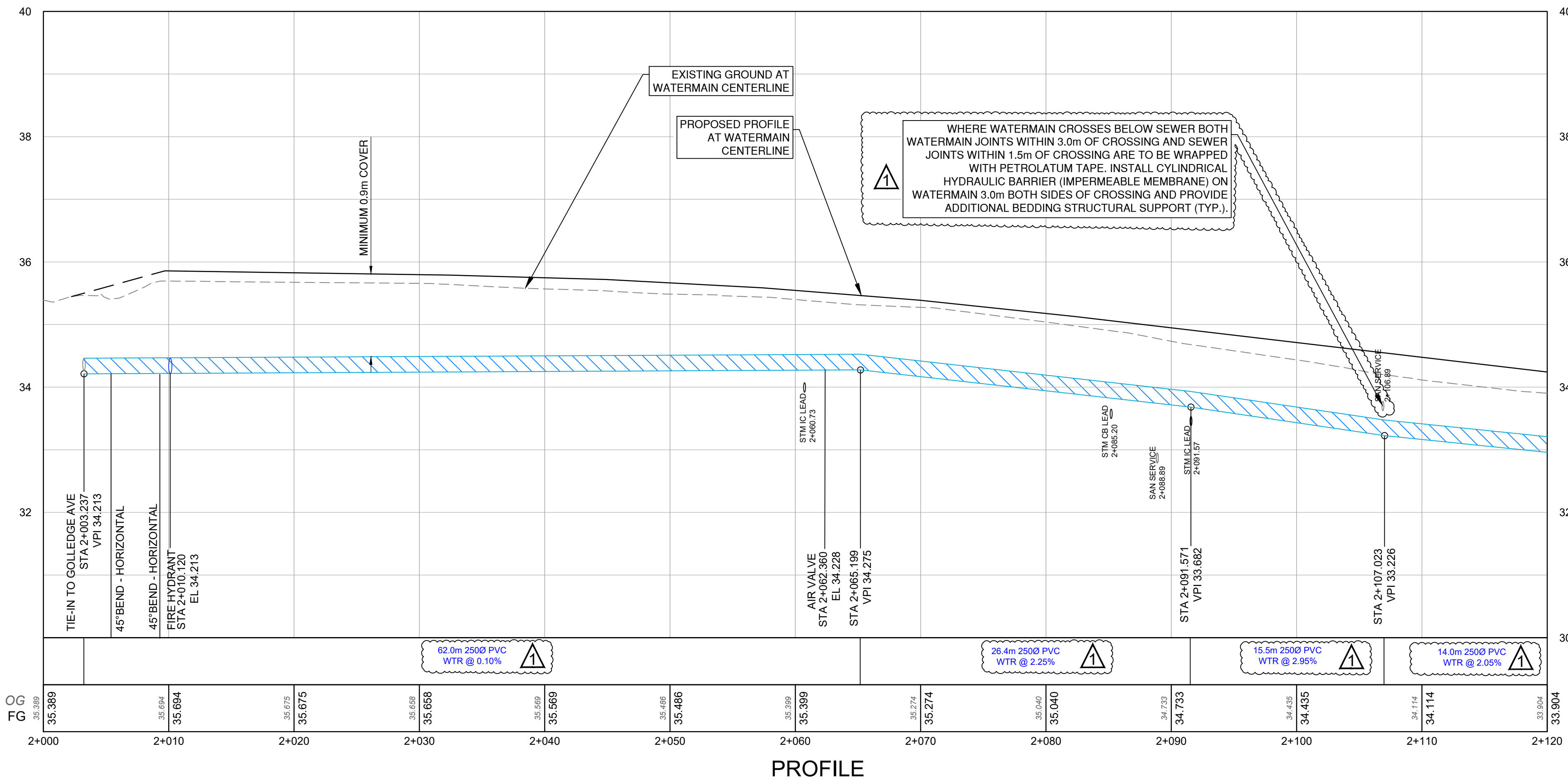
33 40 01		Storm sewers	
	1.6	Measurement and Payment	<b>Add Clause 1.6.12:</b> "Payment for concrete filled jute sack headwall is to include all labour, materials, and equipment required including regrading of ditch."
34 44 01		Manholes and Catch Basins	
	1.5	Measurement and Payment	<b>Revise Clause 1.5.1.1 to Read:</b> "Payment for Manhole base, lid, slab, frame and cover includes all components shown on standard Detail Drawings for manholes including risers. Payment includes dewatering, base preparation, all in-situ concrete work and the submission of shop drawings showing the base, lid, risers, castings and grade rings required for installation to design grades."
<b>DIVISION 34 - TRANSPORTATION</b>			
34 41 13		Traffic Signals	
	1.9	Measurement and Payment	<b>Add Clause 1.9.4:</b> "Payment for supply, relocation, and installation of traffic signs, signposts, bases, and sleeves will be made per each as shown on the Contract Drawings."



FILENAME: 30865\_SH\_WATERMAIN.dwg  
LAST SAVED DATE & TIME: Wednesday, May 31, 2023 2:38 PM  
LAST SAVED BY: CODYLE



PLAN



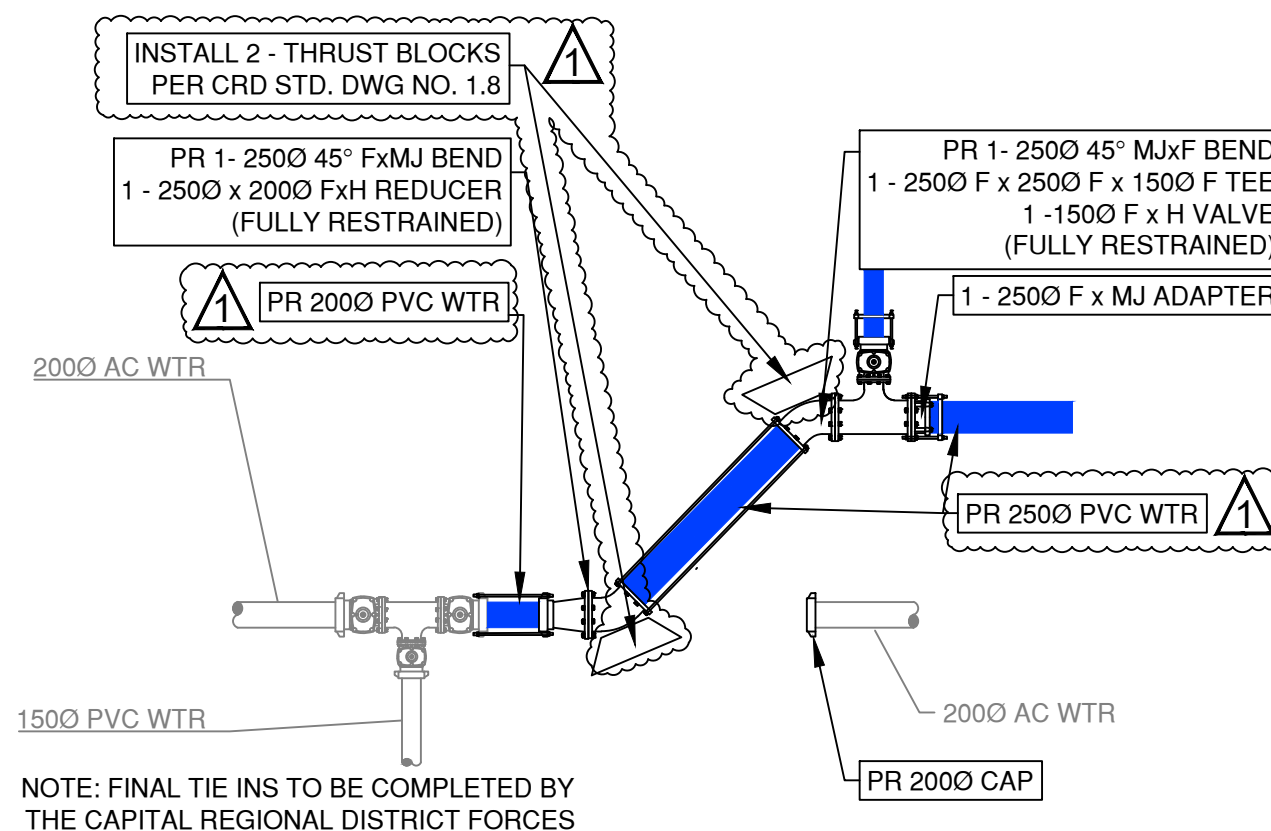
PROFILE

GENERAL NOTES:

1. HYDRANT SPACING HAS BEEN CONFIRMED TO ADHERE TO 150m SPACING PER CRD WATER SERVICES ENGINEERING SPECIFICATIONS AND STANDARD DRAWINGS.
2. 150mm MINIMUM VERTICAL SEPARATION BETWEEN SEWER AND WATERMAIN. WHERE 150mm SEPARATION CANNOT BE ACHIEVED, WRAP WATERMAIN JOINTS WITHIN 3.0m OF CROSSING AND SEWER JOINTS WITHIN 1.5m OF CROSSING WITH PETROLATUM TAPE AND PROVIDE ADDITIONAL BEDDING STRUCTURAL SUPPORT.
3. ALL FITTINGS SHALL COMPLY WITH THE CRD APPENDIX A - APPROVED MATERIALS.
4. CONFIRM LOCATION AND ELEVATION OF CONNECTION POINTS PRIOR TO CONSTRUCTION.

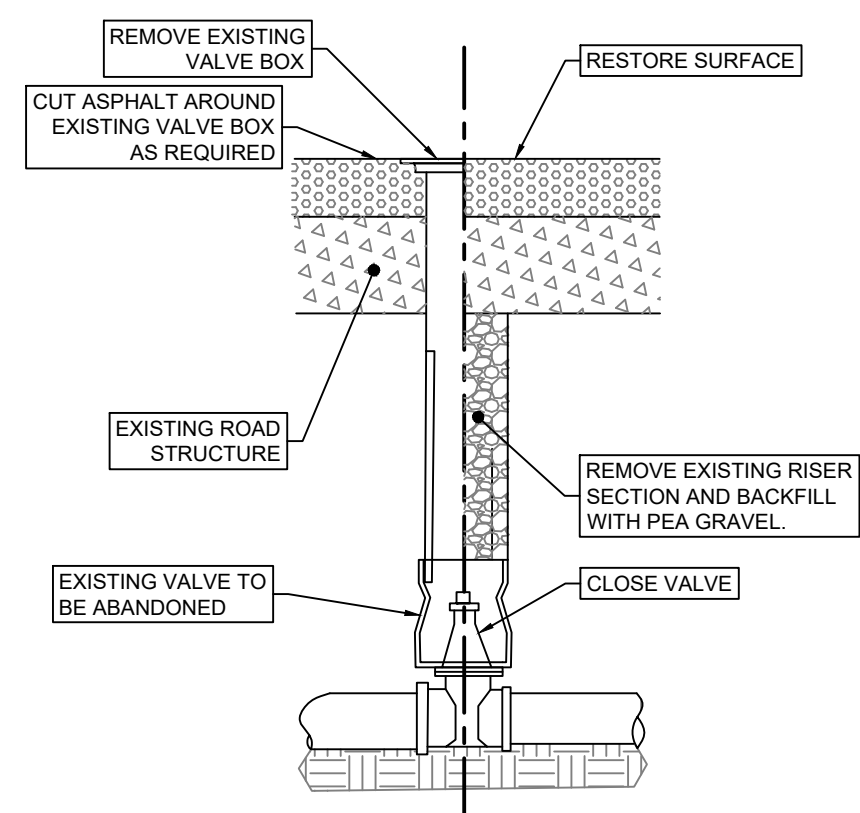
WATERMAIN NOTES:

1. INSTALL 19mm SERVICE AS PER CRD STD. DWG'S 2.3, 2.4 AND 2.6. SET NEW METER BOX TO MATCH FINAL GRADES. FINAL CONNECTIONS TO BE MADE BY CRD CREWS.

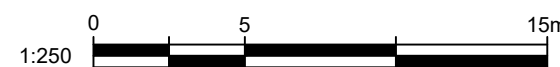


NOTE: FINAL TIE INS TO BE COMPLETED BY THE CAPITAL REGIONAL DISTRICT FORCES

WATERMAIN TIE-IN DETAIL  
CHARTERS RD AND GOLLEDGE AV  
NTS



EXISTING VALVE ABANDONMENT  
NTS



ISSUED FOR  
TENDER

JUNE 14, 2023



No.	DATE	BY	REVISION
Rev. 1	230614	CD	ADDENDUM 3
Rev. 0	230609	CD	ISSUED FOR TENDER

JOB NUMBER:	32859	
DESIGNED BY	BJO	230401
DRAWN BY	AP/AA	230501
CHECKED BY	BJO	230519
APPROVED BY	IM	230523
SCALE		
HORIZ: 1:250		VERT: 1:25

DRAWING TITLE:	PLAN AND PROFILE WATERMAIN STA 2+000 TO STA 2+120
PROJECT TITLE:	CHARTERS ROAD
PROJECT LOCATION:	DISTRICT OF SOOKE

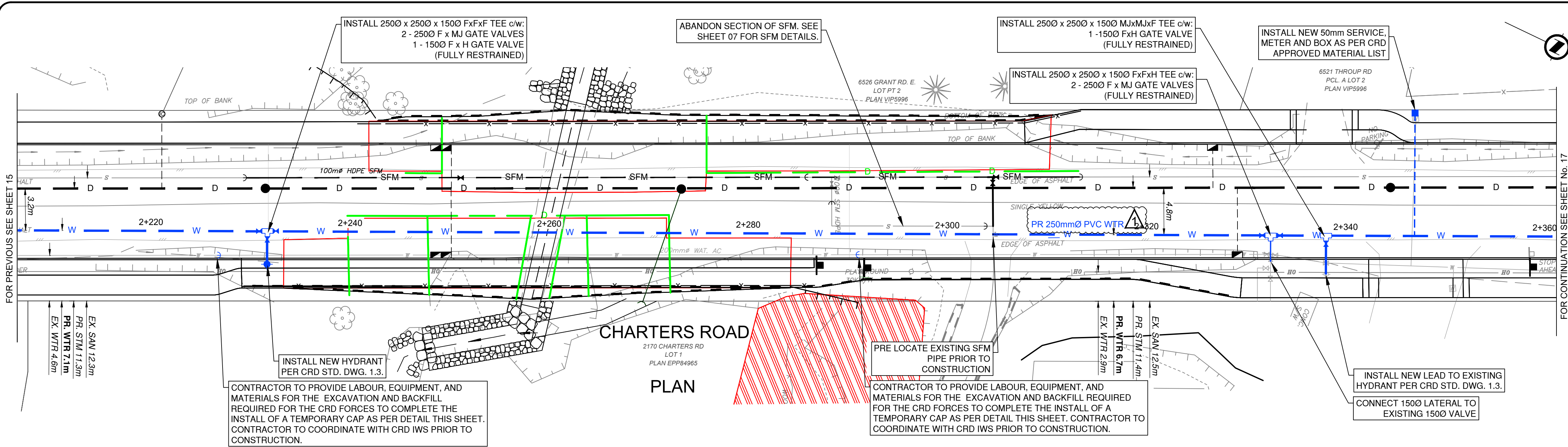
DRAWING No.	REV.	SHEET
32859	1	14 05

DESTROY PRINTS BEARING PREVIOUS NUMBER







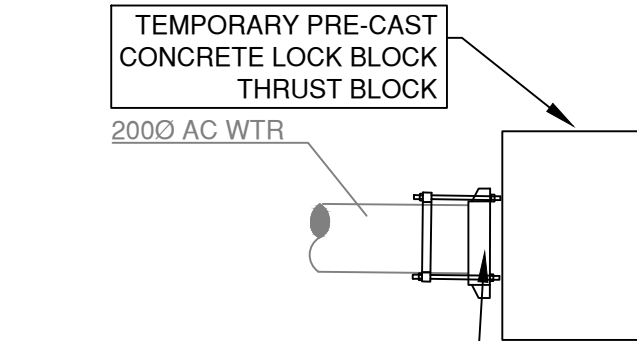
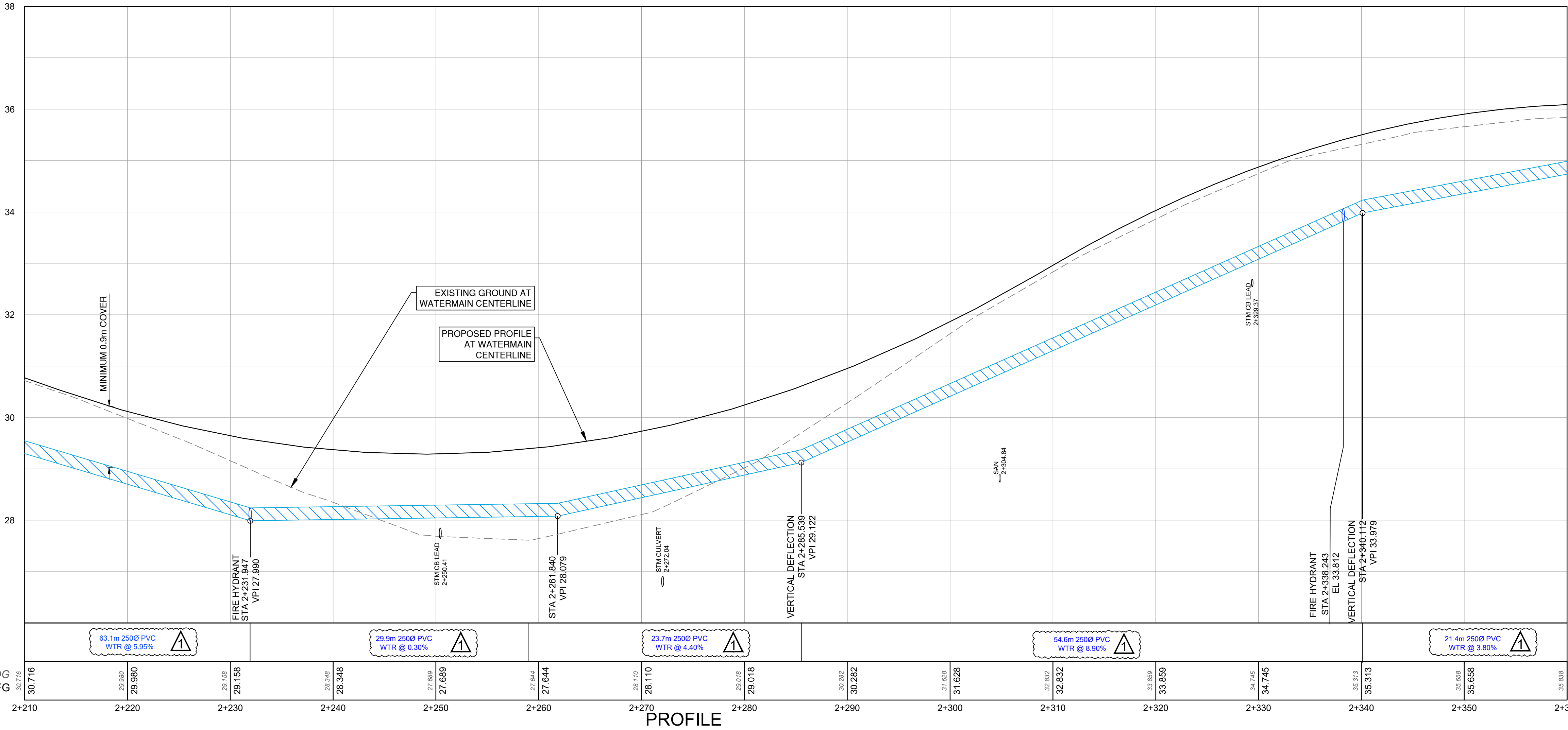


GENERAL NOTES:

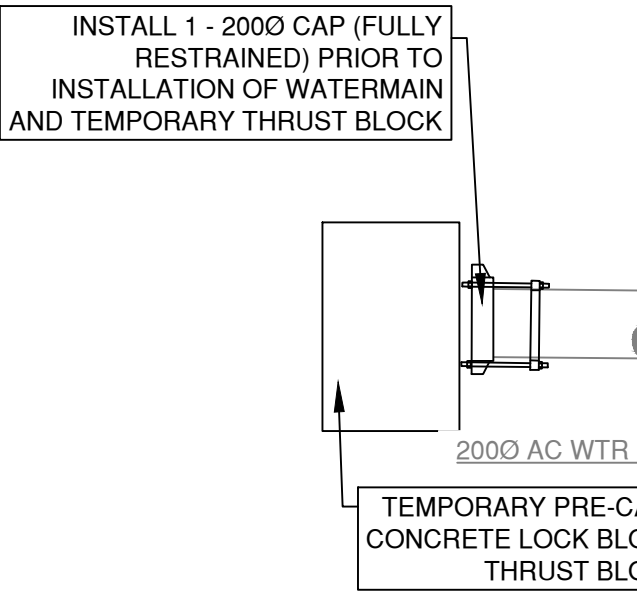
- HYDRANT SPACING HAS BEEN CONFIRMED TO ADHERE TO 150m SPACING PER CRD WATER SERVICES ENGINEERING SPECIFICATIONS AND STANDARD DRAWINGS.
- 150mm MINIMUM VERTICAL SEPARATION BETWEEN SEWER AND WATERMAIN. WHERE 150mm SEPARATION CANNOT BE ACHIEVED, WRAP WATERMAIN JOINTS WITHIN 3.0m OF CROSSING AND SEWER JOINTS WITHIN 1.5m OF CROSSING WITH PETROLATUM TAPE AND PROVIDE ADDITIONAL BEDDING STRUCTURAL SUPPORT.
- ALL FITTINGS SHALL COMPLY WITH THE CRD APPENDIX A - APPROVED MATERIALS.
- CONFIRM LOCATION AND ELEVATION OF CONNECTION POINTS PRIOR TO CONSTRUCTION.

WATERMAIN NOTES:

- INSTALL 19mm SERVICE AS PER CRD STD. DWG'S 2.3, 2.4 AND 2.6.  
SET NEW METER BOX TO MATCH FINAL GRADES. FINAL CONNECTIONS TO BE MADE BY CRD CREWS.



SOUTH WATERMAIN  
TEMPORARY DEAD END DETAIL  
NTS



NORTH WATERMAIN  
TEMPORARY DEAD END DETAIL  
NTS

NOTE: TEMPORARY DEAD ENDS ARE TO BE COMPLETED BY THE CAPITAL REGIONAL DISTRICT FORCES

ISSUED FOR  
TENDER

JUNE 14, 2023



No.	DATE	BY	REVISION
Rev. 1	230614	CD	ADDENDUM 3
Rev. 0	230609	CD	ISSUED FOR TENDER

JOB NUMBER:	32859	
DESIGNED BY	BJO	230401
DRAWN BY	AP/AA	230501
CHECKED BY	BJO	230519
APPROVED BY	IM	230523

SCALE  
HORIZ: 1:250 VERT: 1:25

SEAL



DRAWING TITLE:  
PLAN & PROFILE  
STA 1+080 TO STA 1+180

PROJECT TITLE:  
CHARTERS ROAD

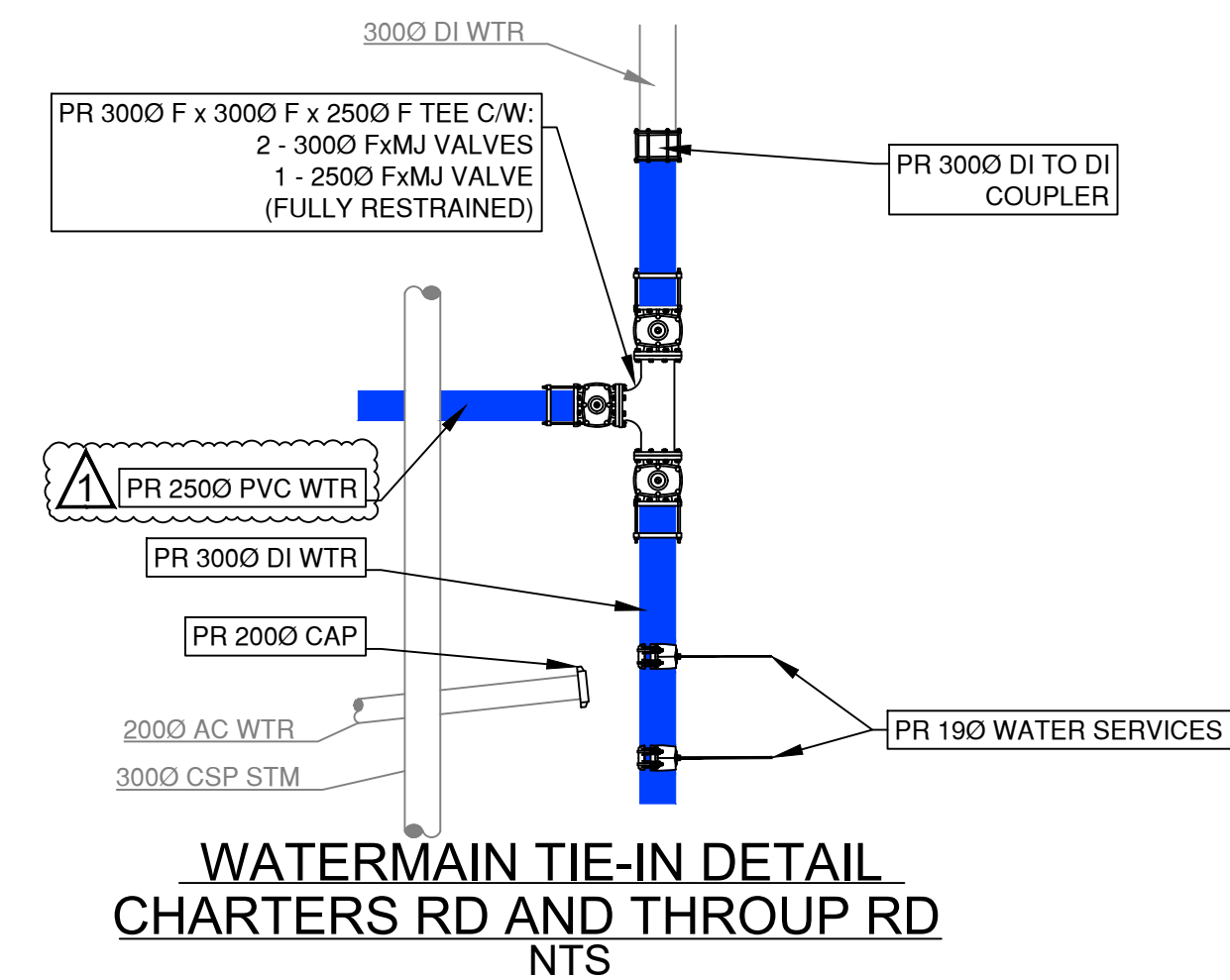
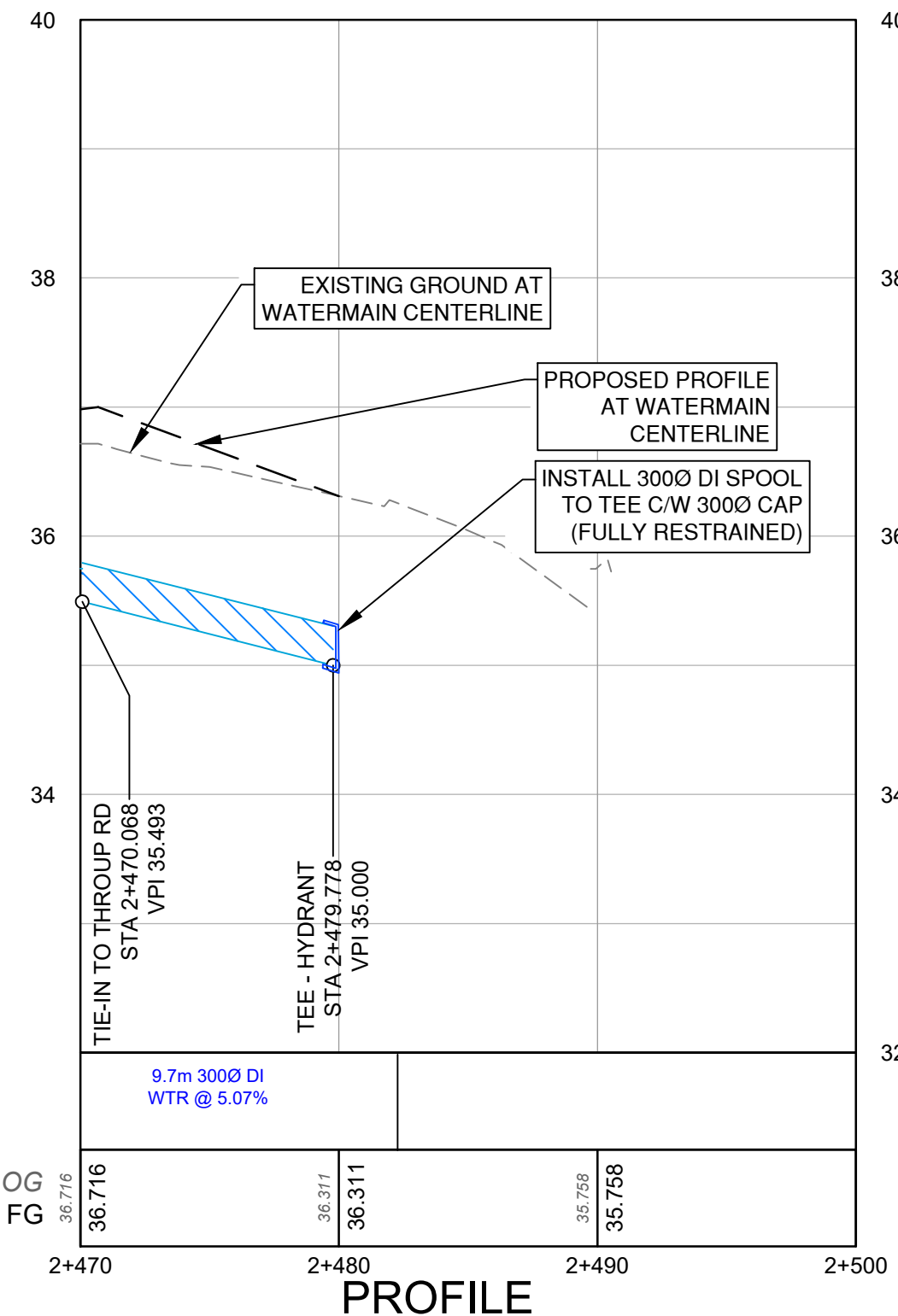
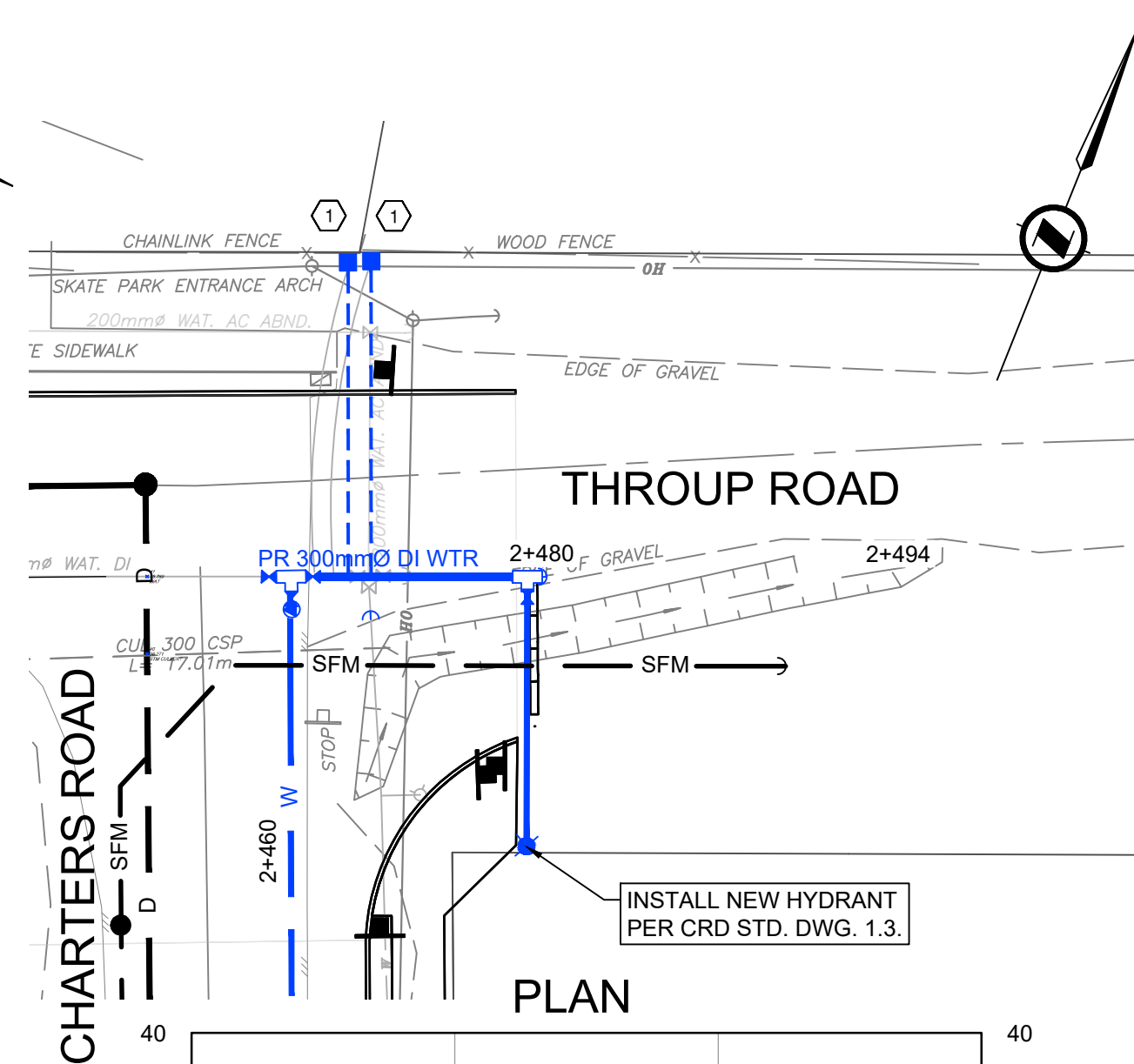
PROJECT LOCATION:  
DISTRICT OF SOOKE

DRAWING No.	REV.	SHEET
32859	1	16

34

DESTROY PRINTS BEARING PREVIOUS NUMBER





JOB NUMBER:		32859
DESIGNED BY	BJO	230401
DRAWN BY	AP/AA	230501
CHECKED BY	BJO	230519
APPROVED BY	IM	230523

SCALE

HORIZ: 1:250      VERT: 1:25

SEAL



DRAWING TITLE:

PLAN & PROFILE  
STA 1+080 TO STA 1+180

PROJECT TITLE:

CHARTERS ROAD

PROJECT LOCATION:

DISTRICT OF SOOKE

DRAWING No.	REV.	SHEET
32859	1	17 / 34