



RE: CHARTERS ROAD – STREETSCAPE – T02-2023 -ADDENDUM #1

June 09, 2023

TO WHOM IT MAY CONCERN:

The following is an addendum to all bidders. **Bidders are to reference receipt of Addendum #1 in their submission.**

Please note the following questions and answers, clarifications and revisions and revised drawings for the above noted Tender are to be known as Addendum No. 1. The following clarifications, questions and answers, changes, and additions are to apply to all documents, and shall be considered by the bidders in preparing their submissions.

Additions, Revisions, and Clarifications

1. The following Drawing sheets have been added to *Schedule 2- List of Contract Drawings* and are attached.

Sheet 14	Revision 0	WATERMAIN STA 2+000 TO STA 2+120
Sheet 15	Revision 0	WATERMAIN STA 2+120 TO STA 2+210
Sheet 16	Revision 0	WATERMAIN STA 2+210 TO STA 2+360
Sheet 17	Revision 0	WATERMAIN STA 2+360 TO STA 2+480

2. CRD Standard Drawing 2.4 - CRD EXISTING SERVICE REPLACEMENT is attached and to be included in the list of *Supplemental Detail Drawings*.

3. The following drawing sheets have been updated with various minor design modifications or note changes for clarification. All changes to the drawings have been identified with a cloud line around the change.

Sheet 0	Revision 1	COVER SHEET
Sheet 1	Revision 1	GENERAL NOTES
Sheet 7	Revision 1	ROADWORKS PLAN – STA 1+290 TO 1+440
Sheet 8	Revision 1	ROADWORKS PLAN – STA 1+440 TO 1+590
Sheet 22	Revision 1	STORM – STA 0+180 TO 330

4. An updated Appendix 1 - Form of Tender is attached with updated payment items and quantity revisions.

5. An updated Supplementary Specifications section to include water works is attached.

Questions and Answers

Q1. Will there be a site meeting for the tender?

A1. No site meeting will be held for the tender.

Q2. Can you confirm the diameter of the perforated wall pipe? The SoQ and planar drawing show 200mm and the x-sections on sheet 11/12 show 150mm.?

A2. The Form of Tender has been updated to reflect the noted 150mm diameter pipe. See attached.

Q2. Can you confirm all line markings are to be thermoplastic and that the longitudinal lines are not meant to be paint?

A2. All pavement markings are to be thermoplastic including long lines.

Q2. Can you confirm the tonnages for the levelling pad are correct?

A2. See attached updated Form of Tender with updated leveling pad quantity.

Q2. Could you clarify the meaning of the per m² of wall (760m²)?

A2. Payment will be made by square meter of installed surface area of the finished face of the wall measured from the bottom of the base block to the top of the top block.

Q2. Could you clarify the meaning of the per m² of wall (760m²)?

A2. Payment will be made by square meter of installed total surface area of the finished face of the wall.

Q2. Regarding bid item 2.6 (Mortared Rock Wall) Is this quantity a provisional sum or does it reference a particular area?

A2. The quantity provided will be optional work. See attached revised Form of Tender.

UNIT
PRICE
CONTRACT

TENDER T02-2023
CHARTERS ROAD STREETScape,
Sooke, B.C.
FORM OF AGREEMENT

REVISED – ADD#1 AGT
PAGE 6 OF 8
MAY 2023

(COMPLETE LISTING OF ALL DRAWINGS, PLANS AND SKETCHES WHICH ARE TO FORM A PART OF THIS CONTRACT,
OTHER THAN STANDARD DETAIL DRAWINGS AND SUPPLEMENTARY STANDARD DETAIL DRAWINGS.)

SCHEDULE 2 – LIST OF CONTRACT DRAWINGS

SHEET	Revision No.	DRAWING DESCRIPTION
CONTRACT DRAWINGS PACKAGE		
0	1	COVER SHEET
1	1	GENERAL NOTES
2	0	REMOVALS - STA 1+080 TO STA 1+290
3	0	REMOVALS - STA 1+290 TO STA 1+590
4	0	REMOVALS - THROUP ROAD
5	0	ROADWORKS PLAN - STA 1+080 TO STA 1+180
6	0	ROADWORKS PLAN - STA 1+180 TO STA 1+290
7	1	ROADWORKS PLAN - STA 1+290 TO STA 1+440
8	1	ROADWORKS PLAN - STA 1+440 TO STA 1+590
9	0	ROADWORKS PLAN - STA 2+000 TO STA 2+100
10	0	WALL PLAN AND PROFILE
11	0	EAST WALL DETAILS AND TYPICAL CROSS SECTION
12	0	WEST WALL DETAILS AND TYPICAL CROSS SECTION
13	0	EAST & WEST WALL - NOTES
14	0	WATERMAIN STA 2+000 TO STA 2+120
15	0	WATERMAIN STA 2+120 TO STA 2+210
16	0	WATERMAIN STA 2+210 TO STA 2+360
17	0	WATERMAIN STA 2+360 TO STA 2+480
18	0	CULVERT PLAN AND PROFILE
19	0	CULVERT DETAILS
20	0	STORM STA 0+000 TO STA 0+070
21	0	STORM STA 0+070 TO STA 0+180
22	1	STORM STA 0+180 TO STA 0+330
23	0	STORM STA 0+330 TO STA 0+465
24	0	STORM THROUP ROAD
25	0	SECTIONS - STA 1+120 TO ST 1+270
26	0	SECTIONS - STA 1+280 TO STA 1+390
27	0	SECTIONS - STA 1+400 TO STA 1+550
28	0	DETAILS
29	0	ELECTRICAL - COVER SHEET - NOTES - KEY PLAN
30	0	SITE PLAN
31	0	SITE PLAN
32	0	SITE PLAN

DISTRICT OF SOOKE

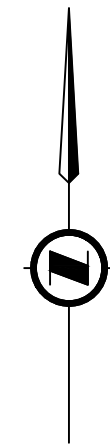
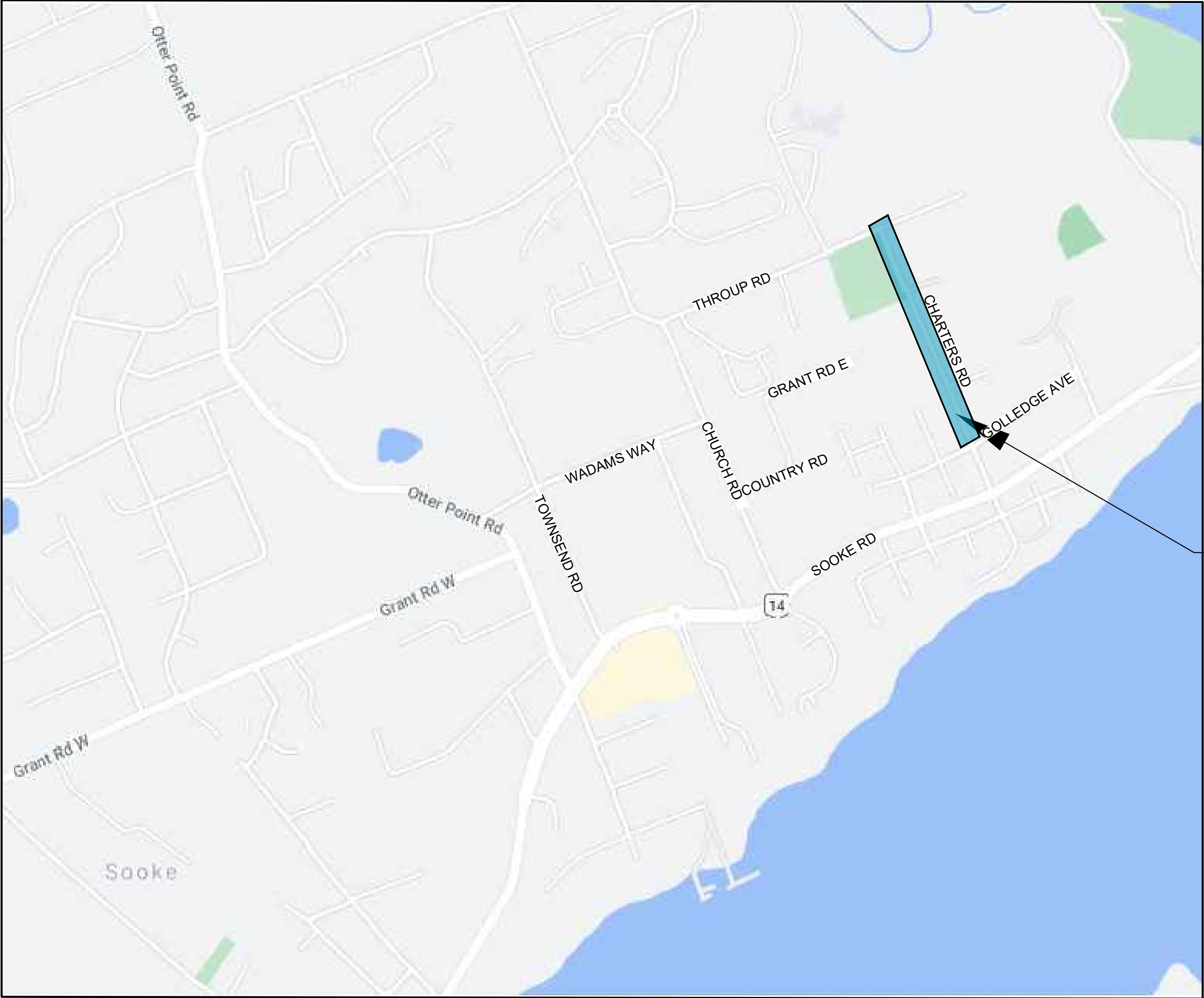
CHARTERS ROAD STREETScape DESIGN

ISSUED FOR TENDER

JUNE 2023

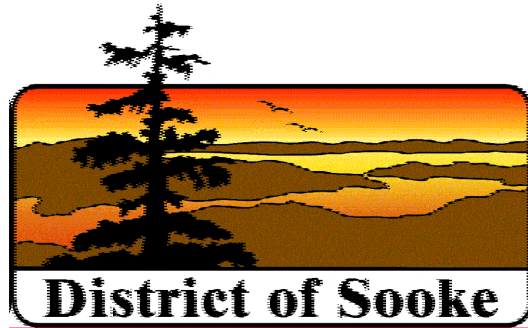
DRAWING INDEX

SHEET	TITLE
00	COVER SHEET
01	GENERAL NOTES
02	REMOVALS - STA 1+080 TO STA 1+290
03	REMOVALS - STA 1+290 TO STA 1+590
04	REMOVALS - THROUP ROAD
05	ROADWORKS PLAN AND PROFILE STA 1+080 TO STA 1+180
06	ROADWORKS PLAN AND PROFILE STA 1+180 TO STA 1+290
07	ROADWORKS PLAN AND PROFILE STA 1+290 TO STA 1+440
08	ROADWORKS PLAN AND PROFILE STA 1+440 TO STA 1+590
09	ROADWORKS THROUP PLAN AND PROFILE STA 2+000 TO STA 2+100
10	WALL PLAN AND PROFILE
11	EAST WALL DETAILS AND TYPICAL CROSS SECTION
12	WEST WALL DETAILS AND TYPICAL CROSS SECTION
13	EAST & WEST WALL - NOTES
14	WATERMAIN STA 2+000 TO STA 2+120
15	WATERMAIN STA 2+120 TO STA 2+210
16	WATERMAIN STA 2+210 TO STA 2+360
17	WATERMAIN STA 2+360 TO STA 2+480
18	CULVERT PLAN AND PROFILE
19	CULVERT DETAILS
20	STORM STA 0+000 TO STA 0+070
21	STORM STA 0+070 TO STA 0+180
22	STORM STA 0+180 TO STA 0+330
23	STORM STA 0+330 TO STA 0+465
24	STORM THROUP ROAD
25	SECTIONS - STA 1+120 TO STA 1+270
26	SECTIONS - STA 1+280 TO STA 1+390
27	SECTIONS - STA 1+400 TO STA 1+550
28	DETAILS
29	ELECTRICAL - COVER SHEET - NOTES - KEY PLAN
30	SITE PLAN
31	SITE PLAN
32	SITE PLAN
33	ELEVATIONS - DETAILS
34	SERVICE KIOSK - DETAILS



PROJECT LOCATION

LOCATION PLAN



ISSUED
FOR TENDER
JUNE 9, 2023

GENERAL NOTES:

1. ALL CONSTRUCTION AND MATERIALS SHALL BE IN ACCORDANCE WITH:
 - THE MASTER MUNICIPAL CONSTRUCTION DOCUMENT AND STANDARD DETAIL DRAWINGS (MMCD 2019), PLATINUM EDITION AND DISTRICT OF SOOKE SUPPLEMENTARY SPECIFICATIONS AND DETAILED DRAWINGS UNLESS OTHERWISE NOTED;
 - APPLICABLE CONTRACT DOCUMENTS AND ALL SPECIFICATIONS REFERENCED THEREIN;
 - THE DISTRICT OF SOOKE APPROVED PRODUCT LIST, LATEST EDITION;
 - MINISTRY OF TRANSPORTATION (MOTI) "BC TRAFFIC CONTROL MANUAL FOR WORK ON ROADWAYS", LATEST EDITION; AND
 - WORKSAFEBC, LATEST EDITION.
 - CAPITAL REGION DISTRICT APPENDIX A - APPROVED PRODUCTS.
 - THE DISTRICT OF SOOKE BYLAWS.
2. THIS DRAWING IS TO BE READ IN CONJUNCTION WITH THE WRITTEN SPECIFICATIONS, DRAWINGS, AND OTHER DETAILS AS ISSUED FOR THIS PROJECT.
3. THE CONTRACTOR SHALL VISIT THE SITE TO CONFIRM SITE CONDITIONS PRIOR TO WORK. ANY DISCREPANCIES BETWEEN THE EXISTING SITE AND THE DRAWINGS ARE TO BE REPORTED TO THE CONSULTANT FOR CLARIFICATION PRIOR TO WORK.
4. THE LIMITS OF THE WORK ARE TO BE CLEARLY UNDERSTOOD BY THE CONTRACTOR PRIOR TO ANY WORK TAKING PLACE ON SITE. THE CONTRACTOR IS TO CONTACT THE CONTRACT ADMINISTRATOR FOR CLARIFICATION IF REQUIRED.
5. ALL ANCILLARY WORK NORMALLY ASSOCIATED WITH THE TYPE OF CONSTRUCTION INDICATED ON THE CONTRACT DRAWINGS AND DOCUMENTS SHALL BE DEEMED TO BE PART OF THE CONTRACT.
6. ANY AMBIGUITY IN THIS DRAWING OR ACCOMPANYING DETAILS IS TO BE REPORTED TO THE CONTRACTOR ADMINISTRATOR. THE CONTRACTOR SHALL NOT PROCEED WITHOUT A CLEAR UNDERSTANDING OF THE WORK.
7. LOCATIONS OF EXISTING UTILITIES AND SERVICES SHOWN ON THESE DRAWINGS ARE DERIVED FROM DISTRICT OF SOOKE BASE DRAWING, AGENCY AS-BUILTS, AND SURVEY INFORMATION. NO GUARANTEE IS MADE AS TO THEIR ACCURACY. THE CONTRACTOR IS TO COORDINATE WITH LOCAL UTILITY OPERATORS TO LOCATE OR ARRANGE THE LOCATE OF ALL EXISTING UTILITIES WITHIN THE LIMITS OF WORK PRIOR TO THE START OF CONSTRUCTION.
8. THE CONTRACTOR SHALL CONTACT BC ONE CALL (1-800-474-6886) BC HYDRO, TELUS, SHAW CABLE, FORTIS GAS AND DISTRICT OF SOOKE FOR UNDERGROUND UTILITY LOCATIONS PRIOR TO CONSTRUCTION.
9. THE CONTRACTOR IS RESPONSIBLE FOR THE HOARDING AND PROTECTION OF ALL RETAINED ELEMENTS WITHIN THE LIMITS OF WORK; INCLUDING BUT NOT LIMITED TO: EXISTING CURBS, CONCRETE, ASPHALT, GRANULAR OR OTHER SURFACES, LANDSCAPE AMENITIES AND LIVE LANDSCAPE MATERIAL, INCLUDING TREES, SHRUBS, GRASSES AND GROUNDCOVERS WITHIN, OR ADJACENT TO, THE LIMITS OF CONSTRUCTION.
10. CAREFULLY RELOCATE EXISTING STREET FURNITURE, TRAFFIC SIGNS AND SITE FEATURES TO ACCOMMODATE CONSTRUCTION WORK. ALL EXISTING WORKS TO BE RETURNED TO AS FOUND OR BETTER CONDITION.
11. THE CONTRACTOR IS RESPONSIBLE FOR THE HAULING OF ALL EXCESS MATERIALS OFF THE SITE.
12. THE CONTRACTOR IS RESPONSIBLE FOR GENERAL SITE CLEAN UP.
13. THE CONTRACTOR IS RESPONSIBLE FOR ANY DAMAGE TO LANDSCAPED AREAS AND MUST MAKE ALL NECESSARY RESTORATIONS AND REPAIRS.
14. THE CONTRACTOR SHALL BE SOLELY RESPONSIBLE FOR CONSTRUCTION MEANS, METHODS, TECHNIQUES, SEQUENCES AND PROCEDURES AND FOR COORDINATION OF THE VARIOUS PARTS OF THE WORK.
15. THE CONTRACTOR TO COORDINATE AND BEAR ALL COSTS FOR MATERIAL TESTING, SUCH AS CONCRETE COMPRESSION STRENGTH, GRANULAR COMPACTION AND ASPHALT DENSITY TESTS. RESULTS TO BE PROVIDED TO CONTRACT ADMINISTRATOR FOR REVIEW.
16. ALL EXISTING ASPHALT TO BE SAWCUT SQUARE. SAWCUTTING AROUND MANHOLE LIDS AND VALVE BOXES TO BE DIAMOND SHAPE.
17. THE CONTRACTOR SHALL MAINTAIN PEDESTRIAN ACCESS TO ALL BUILDINGS AND BUSINESSES AT ALL TIMES. SCHEDULE WORK TO MINIMIZE DISRUPTION TO VEHICULAR TRAFFIC. CONTRACTOR TO COORDINATE WITH BUSINESSES AFFECTED BY WORK FOR ALTERNATE DELIVERY OR ACCESS IF REQUIRED.
18. ALL PAVEMENT MARKINGS AND SIGNS SHALL BE COMPLETED IN ACCORDANCE WITH THE CURRENT TAC MUTCD FOR CANADA.
19. ALL SURFACE RESTORATION WORK TO MATCH EXISTING SURFACE TREATMENTS UNLESS OTHERWISE NOTED.
20. ALL CATCH BASIN GRATES, MANHOLE RIMS, UTILITY BOXES, AND OTHER APPURTENANCES TO BE ADJUSTED TO SUIT NEW SURFACE ELEVATIONS.
21. ALL POLE HOLDING/SUPPORTING TO BE COMPLETED BY THE CONTRACTOR AS REQUIRED AND WHEN EXCAVATING WITHIN 1m OF AN EXISTING POLE LOCATION.
22. ALL DAMAGED OR DISTURBED SURVEY MONUMENTS AND/OR IRON PINS ARE TO BE RECALIBRATED OR REPLACED AND TIED-IN BY A B.C.L.S. AT THE CONTRACTOR'S EXPENSE.
23. ALL EXISTING TREES WITHIN THE R.O.W. TO REMAIN, AND BE PROTECTED AS REQUIRED, UNLESS OTHERWISE NOTED.
24. ALL SIGN/POST HARDWARE TO BE STAINLESS STEEL C/W 2 WASHERS PER BOLT AND A VINYL LOCKING NUT. NUTS SHALL BE REPLACED IF REMOVED.
25. ALL NEW SIGN INSTALLATIONS IN BOULEVARD LOCATIONS SHALL INCLUDE A PROPER BASE AND SITE PREPARATION TO PREVENT MOVEMENT.
26. ALL SIGN POSTS SHALL HAVE A SLEEVE (DISTRICT SUPPLIED) INSTALLED C/W SUITABLE BOLT (TO PREVENT SIGN ROTATION) WITH SUFFICIENT THREADS TO ALLOW VINYL LOCKING NUT TO BE FULLY THREADED.
27. THERMOPLASTIC APPLICATION SHALL INCLUDE THE USE OF STENCILS AND/OR BOARDS TO ESTABLISH CLEAN AND CONSISTENT START/STOPS OF A UNIFORM THICKNESS.
28. REFER TO ELECTRICAL DRAWING SET FOR ELECTRICAL NOTES.
29. CONTRACTOR TO PROVIDE LAYOUT AND CUT SHEETS FOR CONCRETE CURB AND GUTTER 5 DAYS IN ADVANCE OF CONSTRUCTION.
30. PROVIDE THE CRD WITH 24 HOURS NOTICE PRIOR TO PRESSURE TESTING.

ENVIRONMENTAL NOTES:

1. THE CONTRACTOR IS TO COMPLETE THE WORKS IN ACCORDANCE WITH THE ENVIRONMENTAL MANAGEMENT PLAN.
2. ALL CATCHBASINS IN PROXIMITY TO TRENCH WORK OR EXPOSED ROAD BASE WILL BE FITTED WITH MANUFACTURED INLET CONTROL DEVICES AND OR "FILTER SACK" TYPE CATCHBASIN CONTROL (OR APPROVED ALTERNATIVE). CONTROL DEVICES TO BE MAINTAINED IN A FULLY FUNCTIONAL STATE AT ALL TIMES.
3. INLET CONTROL DEVICES (I.E. FILTER SACKS) MUST HAVE A MINIMUM 8" " DROP FROM SURFACE OF THE CATCHBASIN.
4. UNDER NO CIRCUMSTANCES ARE CATCHBASINS TO BE FITTED WITH GEOTEXTILE SHEATHS CUT FROM STOCKPILE ROLLS.
5. AVOID EARTH DISTURBING ACTIVITIES DURING SUBSTANTIAL RAIN EVENTS.
6. THE CONTRACTOR SHOULD AVOID STOCKPILING SOILS, SANDS AND OTHER ERODIBLE MATERIALS ONSITE WHERE POSSIBLE. IT IS PREFERABLE TO " HOT-LOAD" SPOIL DIRECTLY INTO TRUCKS FOR OFFSITE DISPOSAL. IF TEMPORARY WASTE OR SOIL STOCKPILES ARE NECESSARY, MAKE SURE THEY ARE FULLY COVERED WITH POLYETHYLENE DRAWINGING OR TARPS AND WEIGHTED WITH SANDBAGS.
7. TRACKING OF SEDIMENT, SOIL AND/OR ROADBASE FROM WORKSITE TO VEHICLE TRAVEL LANES MUST BE PREVENTED.
8. ROADS MUST BE SWEEPED CLEAN OF SOIL, LOOSE ROAD BASE, EARTH AND SEDIMENT. MECHANICAL SWEEPING IS PREFERRED TO MANUAL SWEEPING. HOWEVER, FREQUENT HAND SWEEPING IS PREFERABLY TO ONCE DAILY MECHANICAL SWEEPING.
9. THE CONTRACTOR IS RESPONSIBLE FOR ENSURING THAT NO SEDIMENT OR SEDIMENT LADEN WATER IS DISCHARGED FROM THE WORKS TO THE OWNER'S DRAINAGE SYSTEM .
10. AN EMERGENCY SPILL KIT WILL BE KEPT ONSITE AT ALL TIMES THE CONTRACTOR IS OPERATING. SPILL KITS MUST INCLUDE BOOMS, SPILL PADS, GLOVES, AND CATCHBASIN BARRIERS. A SPILL KIT WITH AT LEAST 125 LITRES ABSORBENCY IS RECOMMENDED. SANDBAGS AND A SUPPLY OF SAND MUST BE KEPT ONSITE.
11. IT IS THE CONTRACTOR'S RESPONSIBILITY TO DEVELOP A SPILL RESPONSE PLAN THAT PROVIDES WRITTEN SAFE WORK PROCEDURES IN THE EVENT OF A SPILL.
12. THE CONTRACTOR IS TO HAVE ONSITE SODIUM THIOSULPHATE TO TREAT CHLORINATED WATER IN THE EVENT OF A WATER MAIN BREAK.
13. THE CONTRACTOR IS TO DISPOSE OF CHLORINATED WATER AT AN APPROVED LOCATION ONLY AFTER APPROPRIATE TREATMENT WITH SODIUM THIOSULPHATE. AT NO TIME WILL THE CONTRACTOR DISCHARGE WATER CHLORINATED WATER DIRECTLY TO A CATCHBASIN, CREEK, DITCH OR SWALE.
14. THE CONTRACTOR IS TO OBTAIN OWNER'S APPROVAL PRIOR TO DISCHARGING FLUSHING WATER OR DISINFECTION WATER TO OWNER SANITARY SEWER MANHOLES.

ROADWORKS NOTES:

1. SUBGRADE TO BE INSPECTED AND APPROVED BY THE ENGINEER PRIOR TO SUBBASE OR BASE COURSE CONSTRUCTION
2. GRADE SHEETS FOR CONCRETE CURB AND GUTTER RETAINING WALLS ARE TO BE PROVIDED TO THE CONTRACT ADMINISTRATOR 10 DAYS PRIOR TO CONSTRUCTION.
3. CONTRACTOR TO MAINTAIN DRAINAGE DURING CONSTRUCTION
4. FOR DETAILS OF GEOTECHNICAL CONDITIONS AND REQUIREMENTS REFER TO GEOTECHNICAL REPORT INCLUDED IN THE CONTRACT DOCUMENTS

GEOTECHNICAL NOTES:

1. CONTRACTOR TO INSPECT THE ON-SITE GRADES AND EXCAVATIONS PRIOR TO CONSTRUCTION AND NOTIFY RYZUK GEOTECHNICAL IF ON-SITE CONDITIONS DIFFER FROM THE ELEVATIONS AND GRADING SHOWN ON THE ENCLOSED RETAINING WALL DRAWINGS
2. CONTRACTOR IS RESPONSIBLE FOR CONFIRMING WALL GEOMETRY IS COMPATIBLE WITH EXISTING CONDITIONS AND PROPOSED WORKS
3. CONTRACTOR TO REVIEW SECTION 6 OF Redi-Rock's Retaining Wall Design Manual 3.0 (Redi-Rock Specifications) PRIOR TO WALL CONSTRUCTION
4. CONTRACTOR SUBMIT PRECAST MODULAR BLOCK CONCRETE TEST RESULTS (28 DAY COMPRESSIVE STRENGTH, AIR CONTENT, AND SLUMP) A MINIMUM OF 24 HOURS PRIOR TO PLACE OF THE PRODUCT TO RYZUK GEOTECHNICAL.
5. CONTRACTOR TO SUBMIT MILL/PRODUCT CERTIFICATES OF ALL GEOGRID REINFORCEMENT DELIVERED TO SITE FOR USE IN THE MECHANICALLY STABILIZED EARTH (MSE) WALL A MINIMUM OF 24 HOURS PRIOR TO PLACEMENT OF THE PRODUCT TO RYZUK GEOTECHNICAL.

TRAFFIC CONTROL NOTES:

1. ALL TRAFFIC CONTROL TO CONFORM TO MOST CURRENT MOTI WORK ON ROADWAYS MANUAL, MMCD, THE DISTRICT OF SOOKE TRAFFIC MANAGEMENT STRATEGY AND THESE DRAWINGS.
2. STREET LIGHT AND TRAFFIC SIGNAL WITHIN PROJECT EXTENTS TO BE MAINTAINED BY PRIME CONTRACTOR FOR THE DURATION OF THE PROJECT.
3. PROVIDE TRAFFIC CONTROL, SIGNAGE, BARRICADES AND ILLUMINATION, AND DETOUR ROUTING AS REQUIRED TO MAINTAIN TRAFFIC FLOW AND EMERGENCY VEHICLE ACCESS.
4. ALL FLAG PERSONS TO HAVE PROOF OF CERTIFICATION.
5. AT THE END OF EACH DAY, EXCAVATION SHALL BE WELL SIGNED AND PROTECTED.
6. MAINTAIN SAFE PEDESTRIAN WALKWAYS AROUND WORK ZONE AND DELINEATE WITH TEMPORARY FENCING IF REQUIRED.
7. TRENCH PLATES SHALL INCLUDE NON SLIP COATING AND APPROPRIATE APPROACH TREATMENT TO REDUCE TRIPPING HAZARDS IN PEDESTRIAN AREAS.

STORM & SANITARY SEWER NOTES:

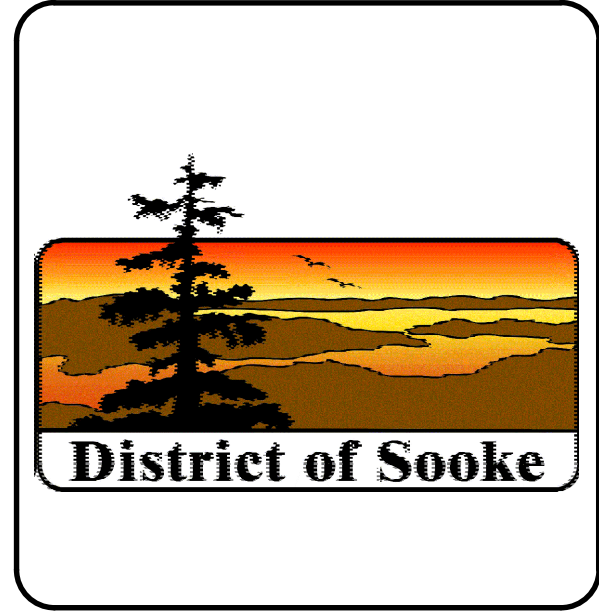
1. CATCHBASIN LEADS TO HAVE MINIMUM 2.0% GRADE.
2. ALL MANHOLES ARE TO BE BENCHED UNLESS NOTED OTHERWISE ON THE DRAWINGS
3. ALL PIPE SIZES INDICATED REFER TO MINIMUM INSIDE DIAMETER DIMENSIONS
4. CONTRACTOR TO SUBMIT SHOP DRAWINGS FOR ALL PIPE MATERIALS, FITTINGS, CONNECTION, MANHOLE, BASES, BENCHING, RISERS, AND CASTINGS.

WATERMAIN NOTES:

1. MINIMUM COVER OVER WATERMAIN TO BE 0.9 METERS UNLESS OTHERWISE NOTED.
2. ALL ABANDONED HYDRANTS, VALVES AND NELSON BOXES TO BE REMOVED AND DISPOSED OFFSITE
3. ALL TIE IN LOCATIONS AND ELEVATIONS ARE TO BE CONFIRMED IN THE FIELD BY THE CONTRACTOR PRIOR TO CONSTRUCTION.
4. CONSTRUCTION SHALL NOT PROCEED WITHOUT FIRST OBTAINING CRD INTEGRATED WATER SERVICES (IWS) ACCEPTANCE OF THE DESIGN DRAWINGS AND A CONSTRUCTION PERMIT FROM ISLAND HEALTH.
5. CONTRACTOR SHALL BE REGISTERED WITH WORK SAFE BC.
6. ALL WATERWORKS CONSTRUCTION AND MATERIALS SHALL BE IN ACCORDANCE WITH CRD IWS ENGINEERING SPECIFICATIONS AND STANDARD DRAWINGS.
7. WATER MAINS SHALL BE DUCTILE IRON PRESSURE CLASS 350 TO AWWA C151; OR PVC DR18 TO AWWA C900 OR AWWA C905; HDPE DR11 TO AWWA 906; OR OTHER MATERIAL, APPROVED IN ADVANCE, ON A CASE BY CASE BASIS BY THE CRD IWS.
8. MARK WATER MAINS BELOW GRADE USING A METALLIC DETECTABLE REINFORCED UNDERGROUND UTILITY MARKING TAPE. THE TAPE SHALL BE MINIMUM 150 mm WIDE, METALLIC BLUE IN COLOUR AND SHALL BE MARKED "CAUTION: WATER LINE BURIED BELOW"/ INSTALL TAPE ON TOP OF THE PIPE CUSHION 300 mm ABOVE THE TOP OF THE PIPE. PROVIDE "THORTEC" MARKING TAPE OR APPROVED EQUAL.
9. MAINTAIN A MINIMUM OF 3 m HORIZONTAL CLEAR SEPARATION AND 450 mm CLEAR VERTICAL SEPARATION BETWEEN WATER MAINS AND ALL SANITARY SEWERS/SERVICES AND DRAIN SEWERS/SERVICES EXCEPT WHERE NOTED AND APPROVED BY CRD IWS. SANITARY SEWER MAINS SHALL NOT CROSS OVER WATER MAINS. FOR A SANITARY FORCEMAIN, WHERE THE ABOVE-NOTED SEPARATIONS CANNOT BE ACHIEVED, THE FORCEMAIN SHALL BE GASKET PRESSURE RATED PIPE WITH A MINIMUM DR (DIMENSION RATIO) OF 28; OR HDPE MINIMUM DR17
10. MAINTAIN A MINIMUM OF 3 m HORIZONTAL CLEAR SEPARATION AND 450 mm CLEAR VERTICAL SEPARATION BETWEEN WATER SERVICES AND SEWER SERVICES, SANITARY OR STORM/DRAIN. IN SPECIAL CIRCUMSTANCES, WHERE A SANITARY SEWER OR STORM DRAIN SERVICE IS LOWER THAN A WATER SERVICE BY MORE THAN 450 mm IN ELEVATION THE HORIZONTAL OFFSET MAY BE REDUCED TO NO LESS THAN 1.0 METERS EXCEPT WHERE NOTED AND APPROVED BY THE CRD IWS. VIHA APPROVAL IS REQUIRED FOR ANY REDUCTION IN THE SEPARATION.
11. FOR CROSSING OF EXISTING SEWERS, WHERE THE WATER MAIN DOES NOT HAVE THE REQUIRED 450 mm VERTICAL SEPARATION, WRAP WATER MAIN JOINTS WITH PETROLATUM TAPE 3 m EITHER SIDE OF THE WATER MAIN. WHERE THE VERTICAL SEPARATION OF 150 mm CANNOT BE ACHIEVED, SPECIAL MITIGATIVE MEASURES SHALL BE APPROVED BY CRD IWS.
12. WHERE NEW CATCHBASIN (CB) LEADS DO NOT HAVE A 450 mm VERTICAL SEPARATION, WRAP CB LEAD JOINTS WITH PETROLATUM TAPE.
13. MAINTAIN A MINIMUM 1.5 m HORIZONTAL CENTRE TO CENTRE AND 150 mm CLEAR VERTICAL SEPARATION BETWEEN WATER MAINS AND ELECTRICAL CONDUITS, GAS MAINS AND TELEPHONE CONDUITS EXCEPT WHERE NOTED AND APPROVED BY CRD IWS.
14. MAINTAIN A MINIMUM OF 1.0 m HORIZONTAL CENTRE TO CENTRE AND 150 mm CLEAR VERTICAL SEPARATION BETWEEN WATER SERVICES AND ELECTRICAL, GAS AND TELEPHONE SERVICES EXCEPT WHERE NOTED AND APPROVED BY CRD IWS.
15. CONTRACTOR SHALL CONDUCT A PRESSURE TEST IN ACCORDANCE WITH CRD IWS ENGINEERING SPECIFICATIONS AND IN THE PRESENCE OF CRD PERSONNEL.
16. CONTRACTOR SHALL FLUSH AND DISINFECT WATER MAINS IN ACCORDANCE WITH AWWA STANDARDS AND AS APPROVED BY CRD IWS. WATER SAMPLES FOR HEALTH TESTS TO BE COLLECTED AND PROCESSED BY CRD. PROVIDE 24 HOURS NOTICE TO CRD.
17. NEUTRALIZE CHLORINE SOLUTIONS IN ACCORDANCE WITH MINISTRY OF ENVIRONMENT AND FISHERIES AND OCEANS CANADA REGULATIONS PRIOR TO DISCHARGE TO ANY DRAINAGE COURSE.
18. CONTRACTOR SHALL PROVIDE 24 HOUR NOTICE TO CRD IWS PRIOR TO PROCEEDING WITH ANY WATERWORKS.
19. CRD IWS SHALL MAKE ALL CONNECTIONS TO EXISTING WATER MAINS AT APPLICANT'S EXPENSE. CONTRACTOR SHALL PROVIDE 48 HOURS NOTICE TO CRD IWS FOR WORK REQUIRED BY CRD IWS FORCES.
20. WHERE PRACTICAL, SERVICE LINES AND METER BOXES SHALL BE INSTALLED TO FINISHED GRADE, OUTSIDE OF DRIVEWAYS OR PAVED AREAS.
21. ANY TEMPORARY OR PERMANENT CONNECTION TO THE JUAN DE FUCA WATER DISTRIBUTION SYSTEM OR THE CRD SUPPLY SYSTEM SHALL BE PERFORMED BY CRD IWS PERSONNEL ONLY.
22. REPLACE ALL WATER METERS AND WATER METER BOXES.
23. ADVISE CRD BILLING CLERK OF ANY REMOVED WATER SERVICES.
24. ANY ROAD REINSTATEMENT IS TO CONFORM TO DISTRICT OF SOOKE STANDARDS.
25. REINSTATEMENT OF DRIVEWAYS, BOULEVARDS & OTHER FEATURES TO BE AS GOOD AS OR BETTER THAN BEFORE EXCAVATION.
26. CONFIRM LOCATION OF UTILITY/SERVICE BY HAND DIGGING PRIOR TO WATER MAIN INSTALLATION.
27. THRUST BLOCKS HAVE TO HAVE A REACTION AREA BASED ON THE FOLLOWING: MAX. PRESSURE * 1.5=200 psi. SOIL TYPE=SW; SAFETY FACTOR=1.0
28. ONCE THE NEW WATER MAIN IS CONNECTED AND OPERATIONAL, VALVES ON THE ABANDONED WATER MAIN TO BE LEFT IN THE CLOSED POSITION WITH THE VALVE BOX AND RISER REMOVED AND DISPOSED OFFSITE. HOLE TO BE BACKFILLED WITH PEA GRAVEL AND SURROUNDING AREA REINSTATED.

CRD STANDARD DRAWING REFERENCES:

- 1.3 STANDARD FIRE HYDRANT ASSEMBLY
- 1.6 100 mm FLUSH ASSEMBLY FOR DISTRIBUTION MAINS (OUTSIDE PAVED AREA)
- 1.7 STANDARD LINE VALVE INSTALLATION
- 1.8 CONCRETE THRUST BLOCK DETAILS c/w 6mil POLY ON INTERFACE BETWEEN CONCRETE AND FITTING
- 1.9 MECHANICAL THRUST RESTRAINT APPLICATIONS c/w PRIMER AND PETROLATUM TAPE TO AWWA C217
- 1.10 THRUST RESTRAINT LENGTH
- 1.12 STANDARD TRENCH DETAIL
- 1.13 STANDARD WATER VALVE BOX
- 1.14 HYDRANT INSTALLATION IN DITCHED AREAS
- 2.3 19mm CAST IRON COVER FOR 19mm METER
- 2.4 EXISTING SERVICE REPLACEMENT
- 2.5 WATER SERVICE - TYPICAL LAYOUT WITH RESPECT TO PROPERTY LINE
- 2.6 STANDARD WATER SERVICE CONNECTION



REV.1	230609	CD	ADDENDUM 1
REV. 0	230526	API/AA	ISSUED FOR TENDER
No.	DATE	BY	REVISION

JOB NUMBER:	32859	
DESIGNED BY	BJO	230401
DRAWN BY	API/AA	230501
CHECKED BY	BJO	230519
APPROVED BY	IM	230523
SCALE		
HORIZ: AS SHOWN VERT: -		
SEAL		

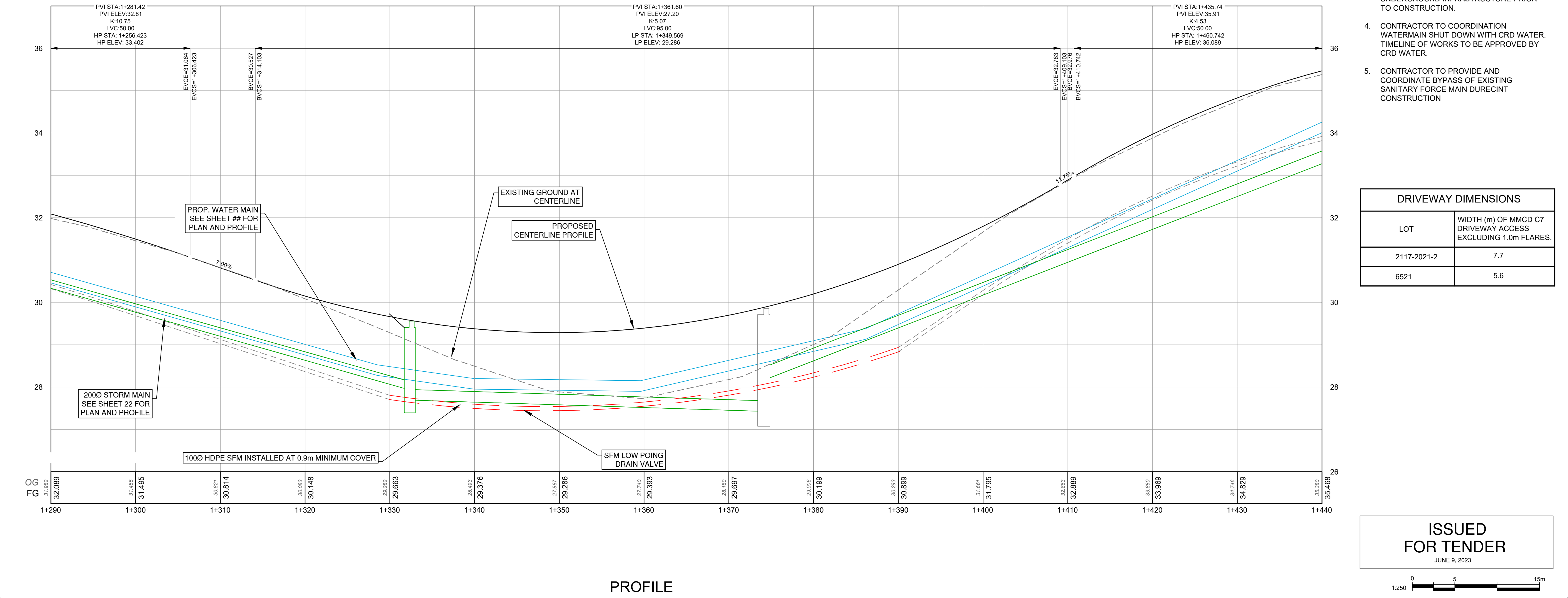
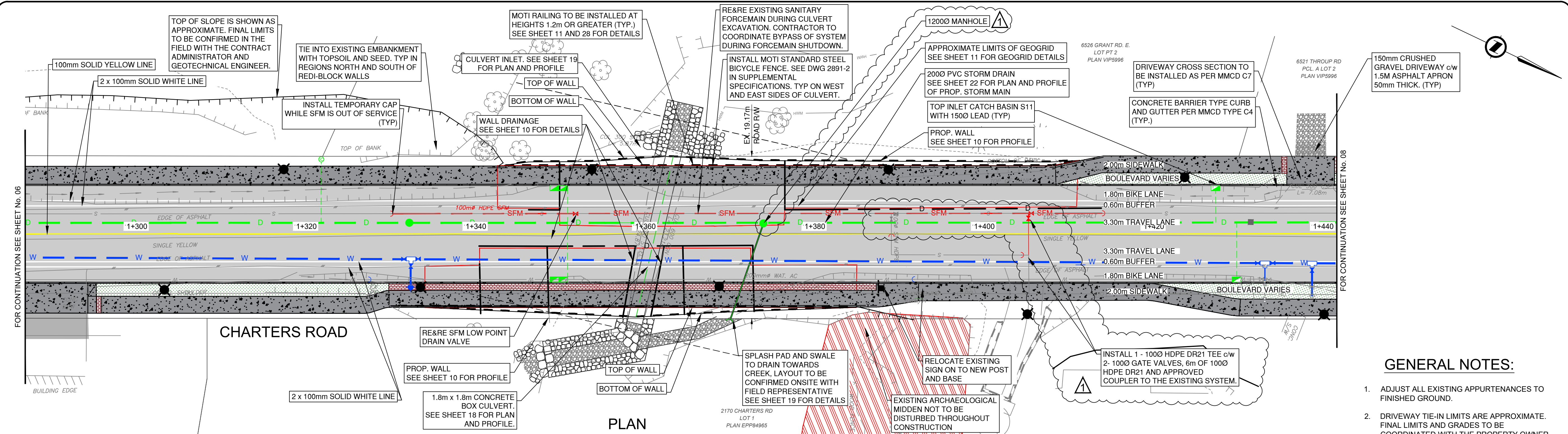
DRAWING TITLE:	
GENERAL NOTES	
PROJECT TITLE:	
CHARTERS ROAD	
PROJECT LOCATION:	
DISTRICT OF SOOKE	

DRAWING No.	REV.	SHEET
32859	1	01 / 34

ISSUED
FOR TENDER

JUNE 9, 2023

DESTROY PRINTS BEARING PREVIOUS NUMBER



- GENERAL NOTES:**
- ADJUST ALL EXISTING APPURTENANCES TO FINISHED GROUND.
 - DRIVEWAY TIE-IN LIMITS ARE APPROXIMATE. FINAL LIMITS AND GRADES TO BE COORDINATED WITH THE PROPERTY OWNER AND THE DISTRICT.
 - CONFIRM LOCATION AND ELEVATION OF ALL UNDERGROUND INFRASTRUCTURE PRIOR TO CONSTRUCTION.
 - CONTRACTOR TO COORDINATION WATERMAIN SHUT DOWN WITH CRD WATER. TIMELINE OF WORKS TO BE APPROVED BY CRD WATER.
 - CONTRACTOR TO PROVIDE AND COORDINATE BYPASS OF EXISTING SANITARY FORCE MAIN DURECINT CONSTRUCTION

DRIVEWAY DIMENSIONS	
LOT	WIDTH (m) OF MMCD C7 DRIVEWAY ACCESS EXCLUDING 1.0m FLARES.
2117-2021-2	7.7
6521	5.6

ISSUED FOR TENDER
JUNE 9, 2023

0 5 15m
1:250



Rev.	DATE	BY	REVISION
Rev. 1	230609	CD	Addendum 1
Rev. 0	230526	API/AA	ISSUE FOR TENDER

JOB NUMBER:	32859	
DESIGNED BY	BJO	230401
DRAWN BY	API/AA	230501
CHECKED BY	BJO	230519
APPROVED BY	IM	230526
SCALE	HORIZ: 1:250 VERT: 1:25	
SEAL		

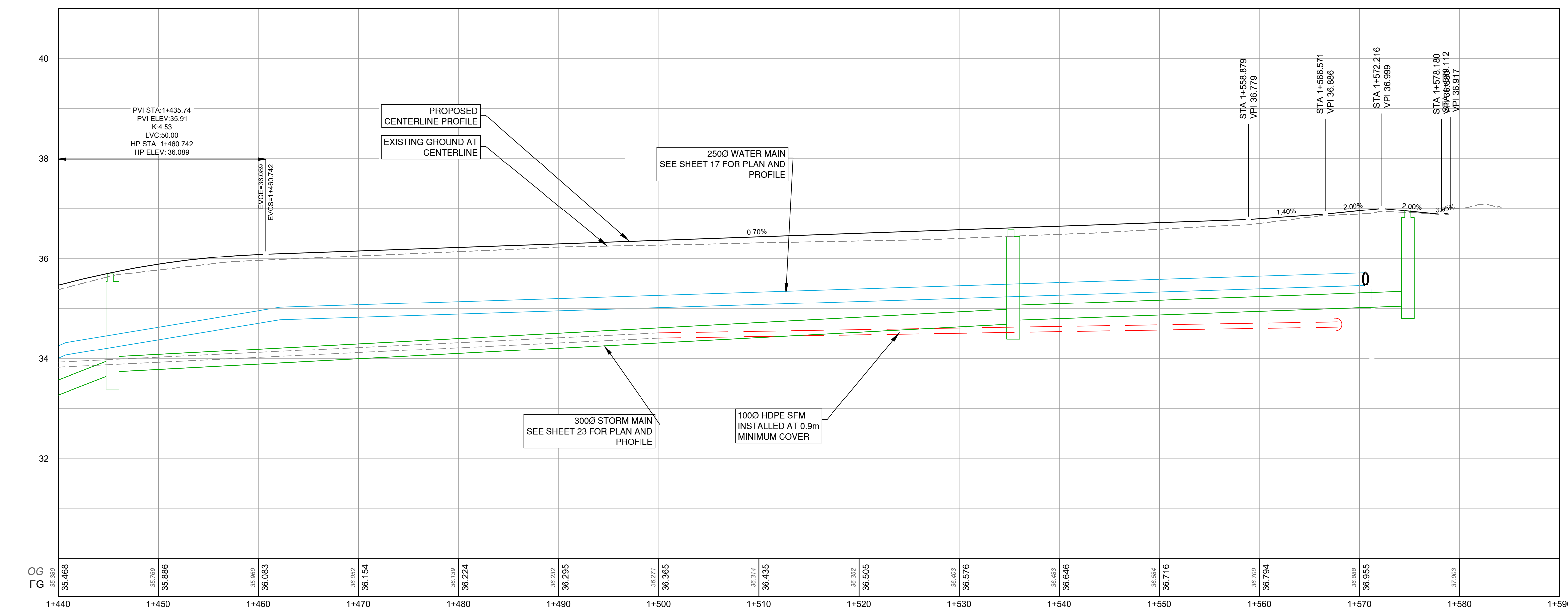
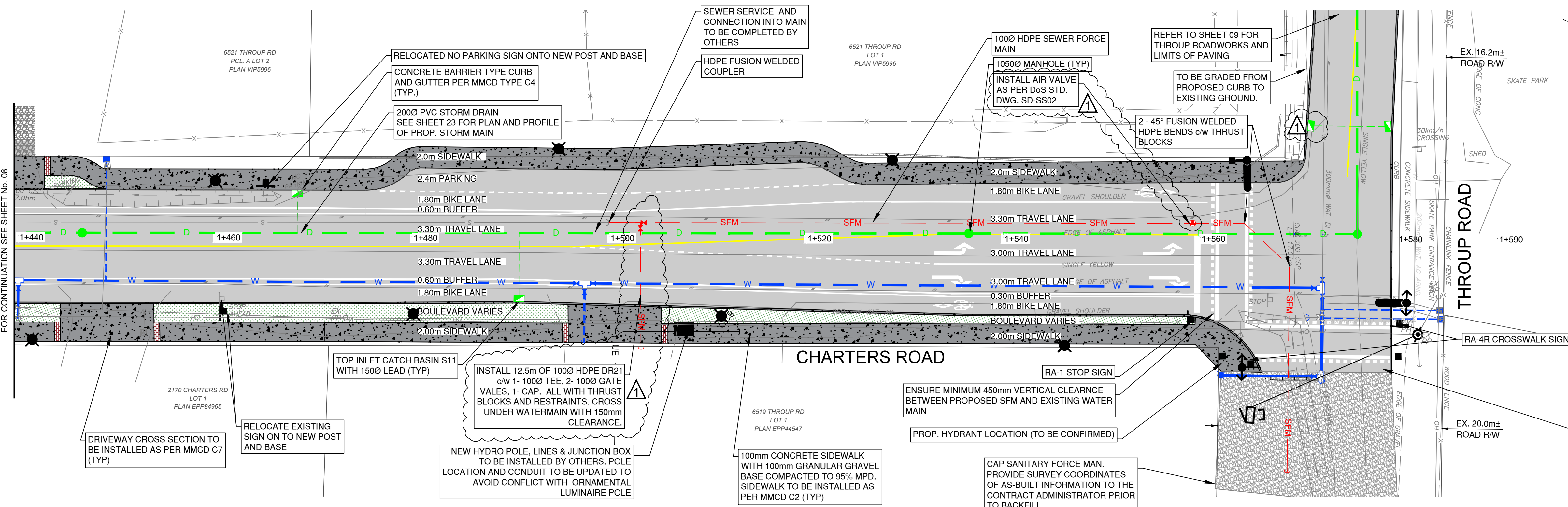
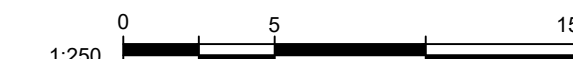
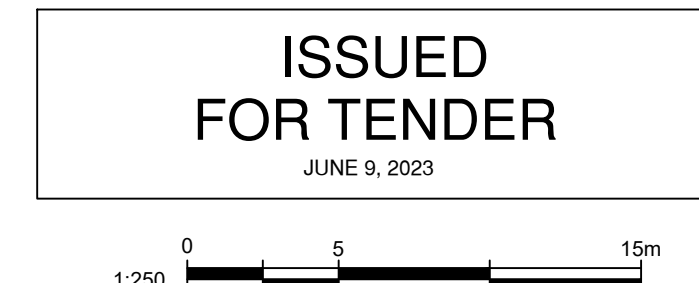
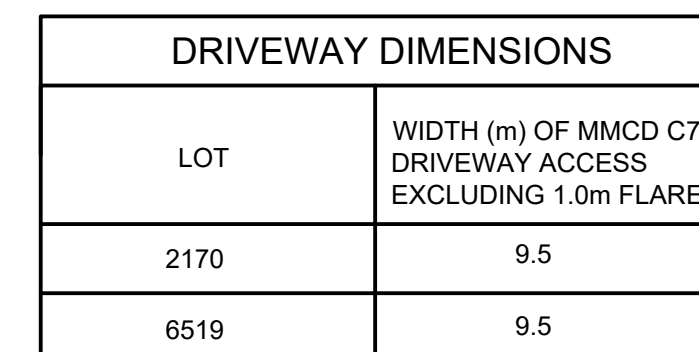
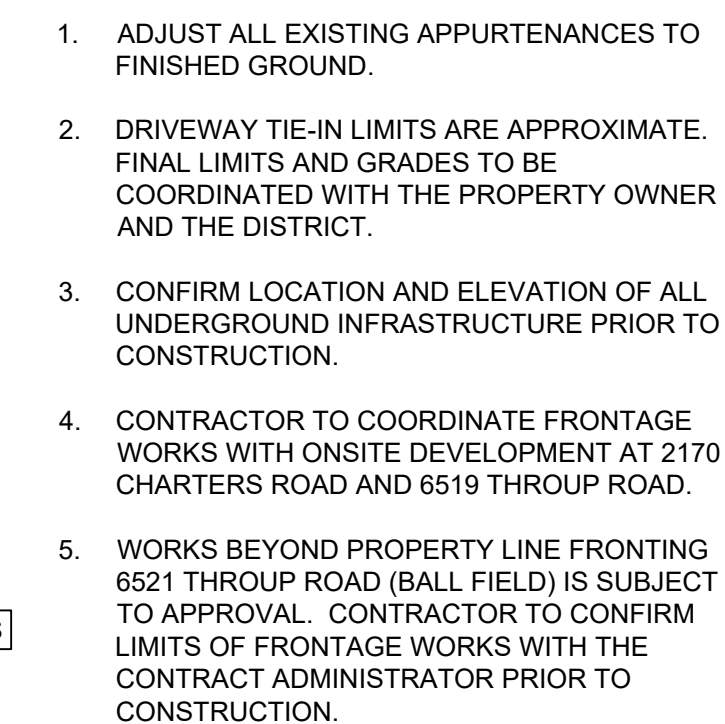
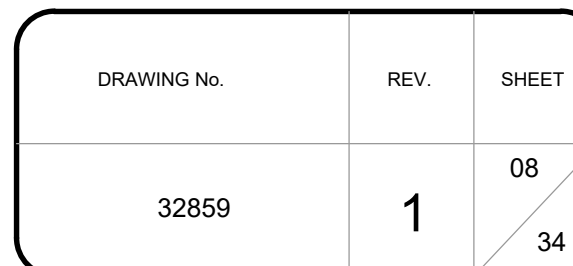
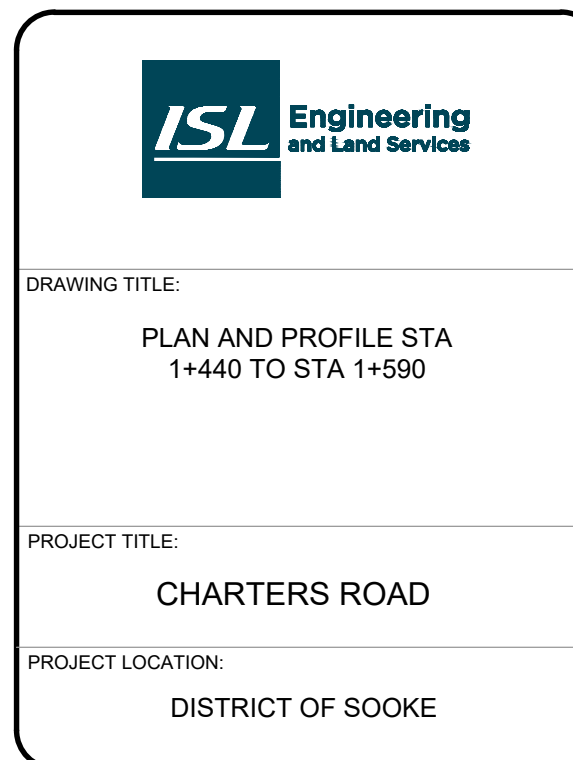
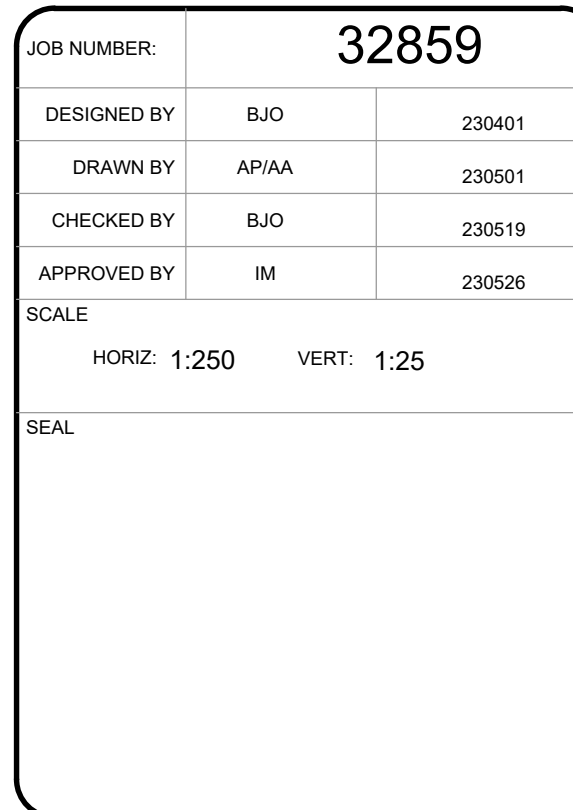
ISL Engineering and Land Services

DRAWING TITLE:
PLAN AND PROFILE STA 1+290 TO STA 1+440

PROJECT TITLE:
CHARTERS ROAD

PROJECT LOCATION:
DISTRICT OF SOOKE

DRAWING No.	REV.	SHEET
32859	1	07 / 34



ISSUED
FOR TENDER

JUNE 9, 2021

DESTROY PRINTS BEARING PREVIOUS NUMBER

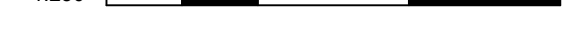


1. HYDRANT SPACING HAS BEEN CONFIRMED TO ADHERE TO 150m SPACING PER CRD WATER SERVICES ENGINEERING SPECIFICATIONS AND STANDARD DRAWINGS.
2. 150mm MINIMUM VERTICAL SEPARATION BETWEEN STORM LEADS AND WATERMAIN.
3. ALL FITTINGS SHALL COMPLY WITH THE CRD APPENDIX A - APPROVED MATERIALS.
4. CONFIRM LOCATION AND ELEVATION OF CONNECTION POINTS PRIOR TO CONSTRUCTION.

1. INSTALL 19mm SERVICE AS PER CRD STD. DWG'S 2.3, 2.4 AND 2.6.
SET NEW METER BOX TO MATCH FINAL GRADES. FINAL CONNECTIONS TO
BE MADE BY CRD CREWS.



JUNE 9, 2023



JOB NUMBER:	32859	
DESIGNED BY	BJO	230401
DRAWN BY	AP/AA	230501
CHECKED BY	BJO	230519
APPROVED BY	IM	230523

SEAL

DRAWING TITLE:

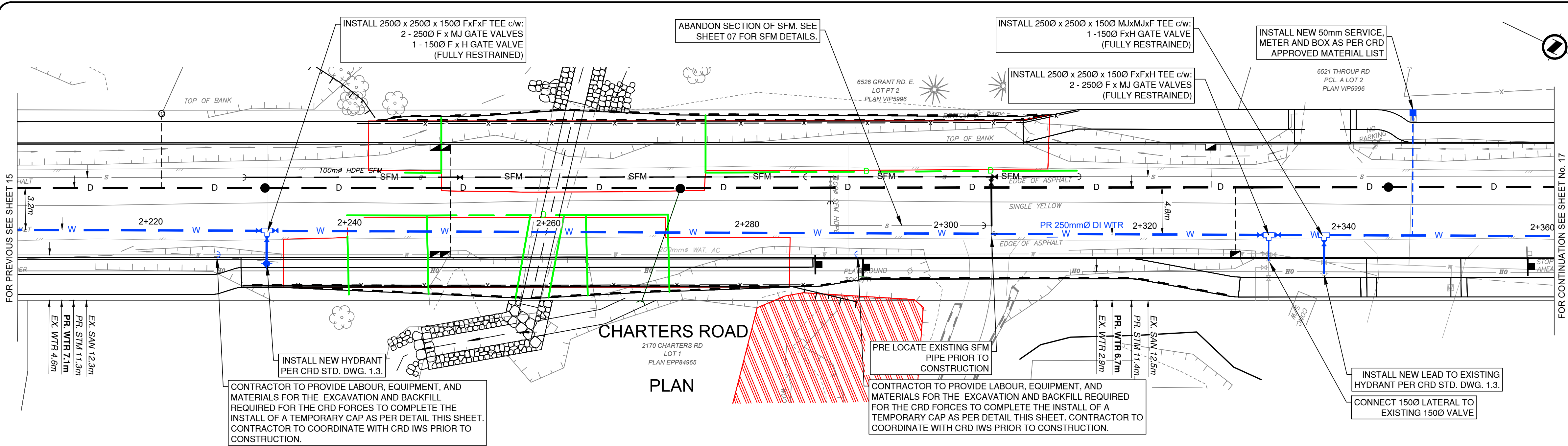
PLAN AND PROFILE
WATERMAIN STA 2+000
TO STA 2+120

PROJECT TITLE:

CHARTERS ROAD

PROJECT LOCATION:

DISTRICT OF SOOKE

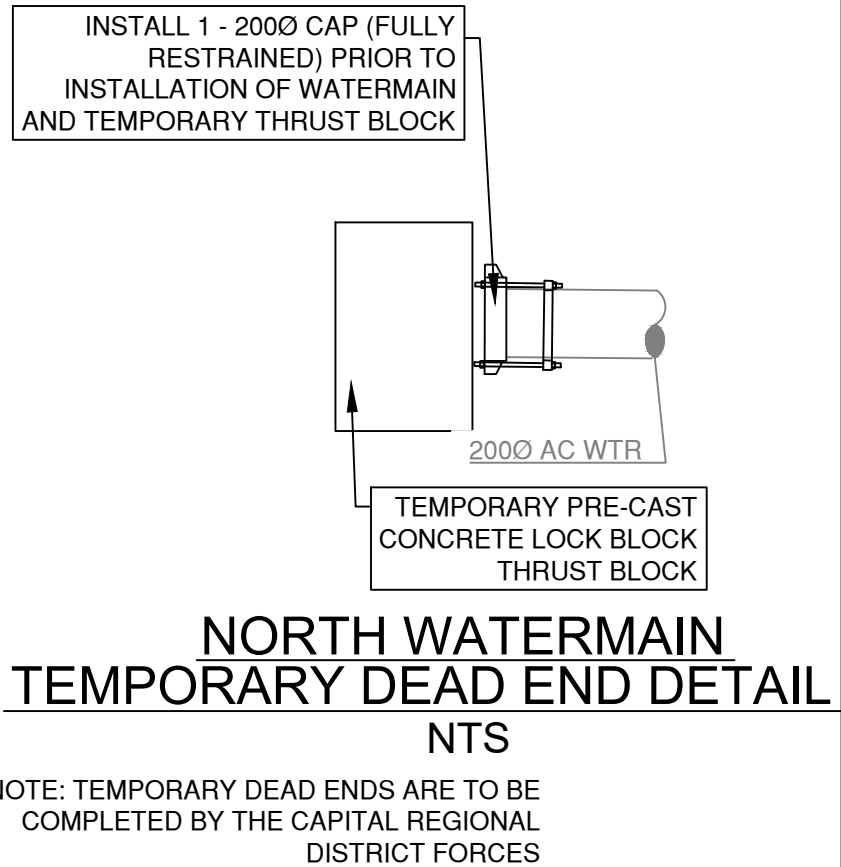
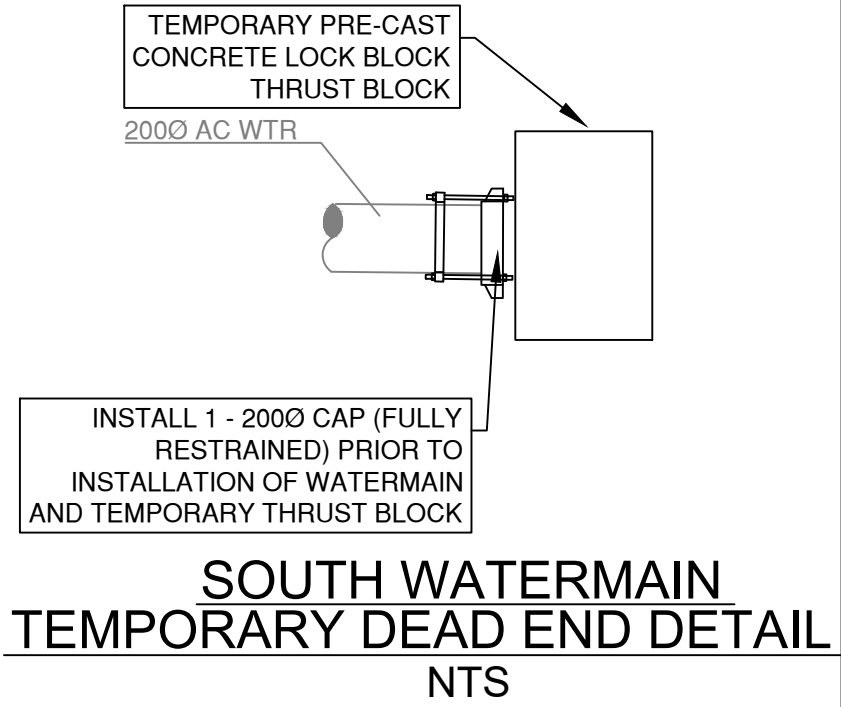
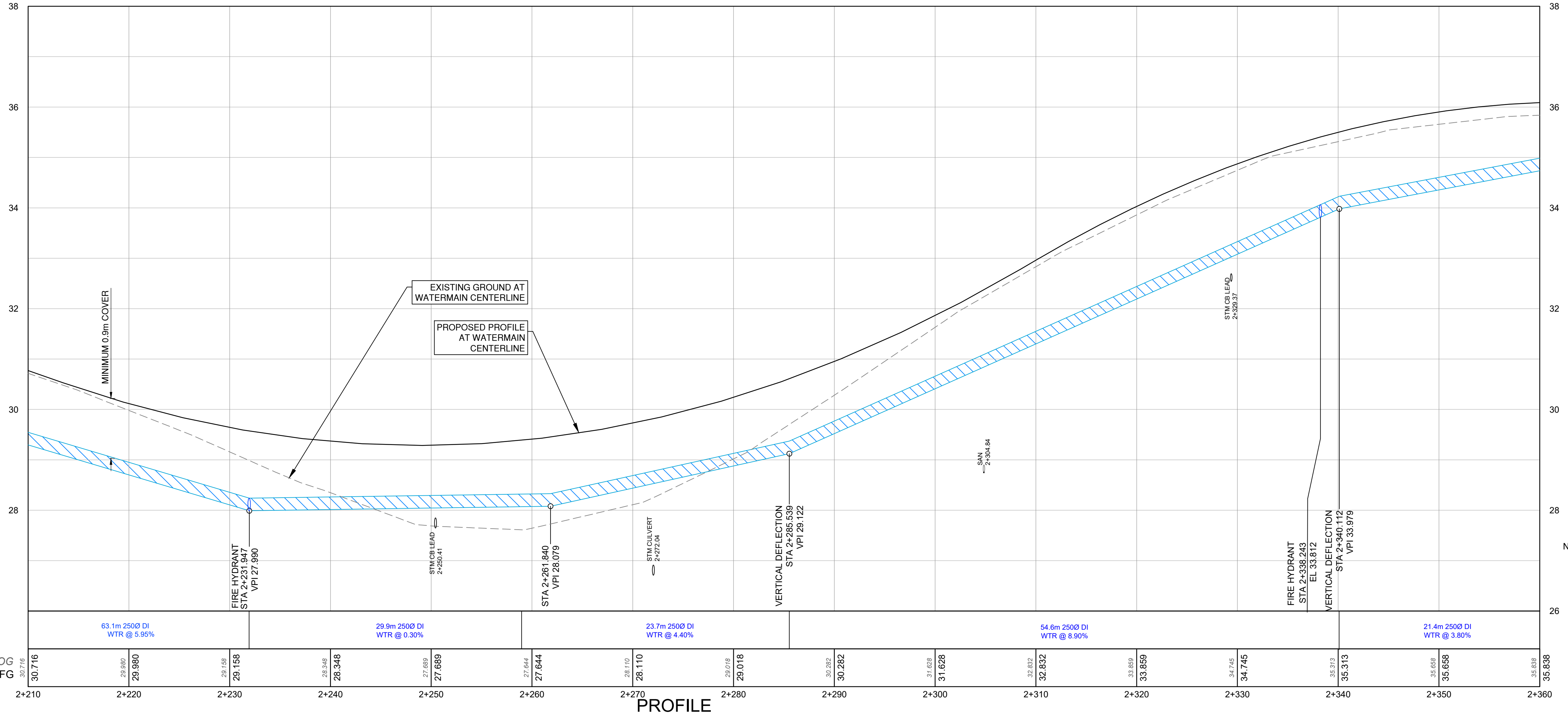


GENERAL NOTES:

1. HYDRANT SPACING HAS BEEN CONFIRMED TO ADHERE TO 150m SPACING PER CRD WATER SERVICES ENGINEERING SPECIFICATIONS AND STANDARD DRAWINGS.
2. 150mm MINIMUM VERTICAL SEPARATION BETWEEN STORM LEADS AND WATERMAIN.
3. ALL FITTINGS SHALL COMPLY WITH THE CRD APPENDIX A - APPROVED MATERIALS.
4. CONFIRM LOCATION AND ELEVATION OF CONNECTION POINTS PRIOR TO CONSTRUCTION.

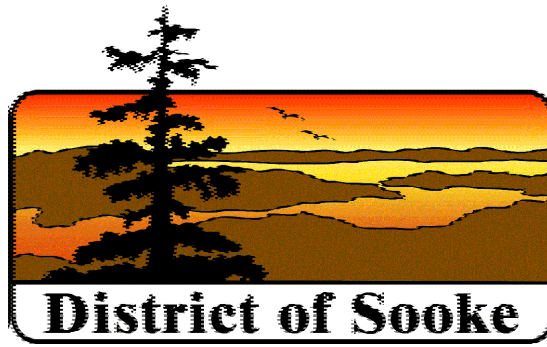
WATERMAIN NOTES:

- ① INSTALL 19mm SERVICE AS PER CRD STD. DWG'S 2.3, 2.4 AND 2.6
SET NEW METER BOX TO MATCH FINAL GRADES. FINAL CONNECTIONS TO BE MADE BY CRD CREWS.



ISSUED
FOR TENDER

JUNE 9, 2023



No.	DATE	BY	REVISION
0	230609	CD	ISSUED FOR TENDER

JOB NUMBER:	32859	
DESIGNED BY	BJO	230401
DRAWN BY	AP/AA	230501
CHECKED BY	BJO	230519
APPROVED BY	IM	230523

SCALE
HORIZ: 1:250 VERT: 1:25

SEAL

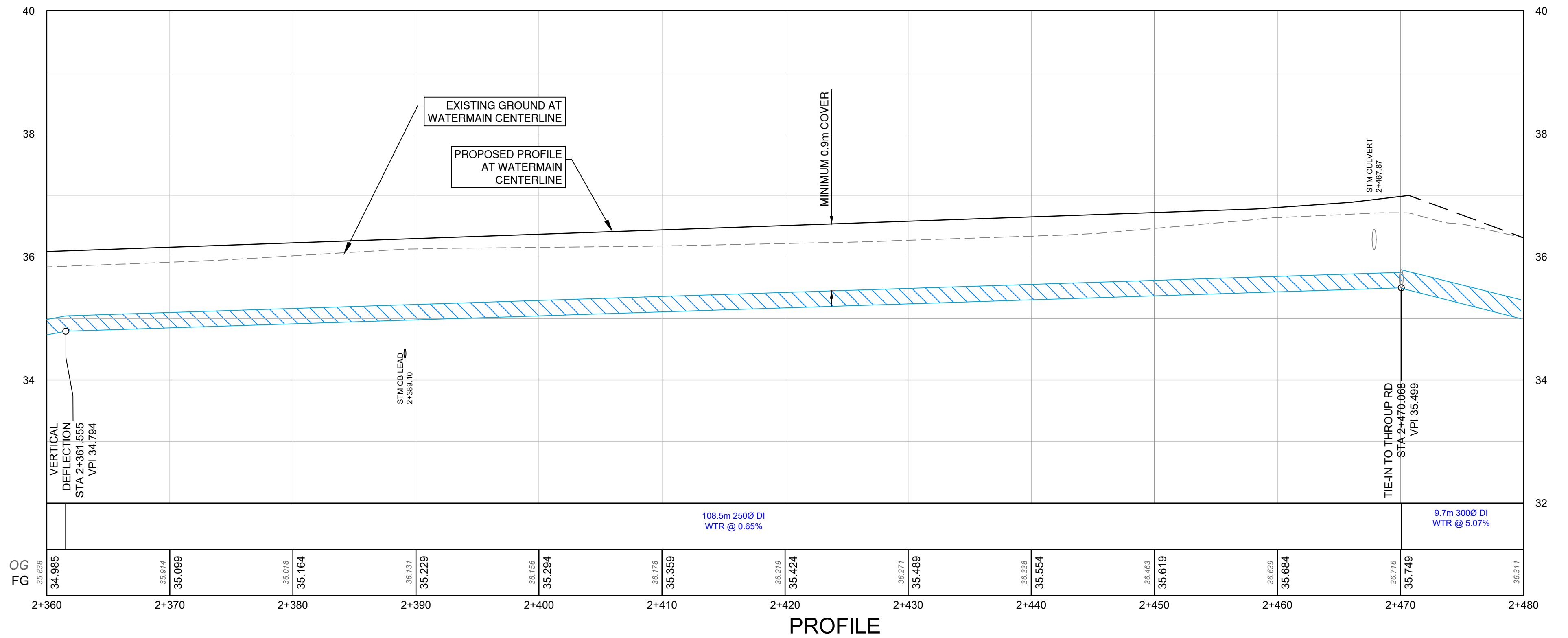
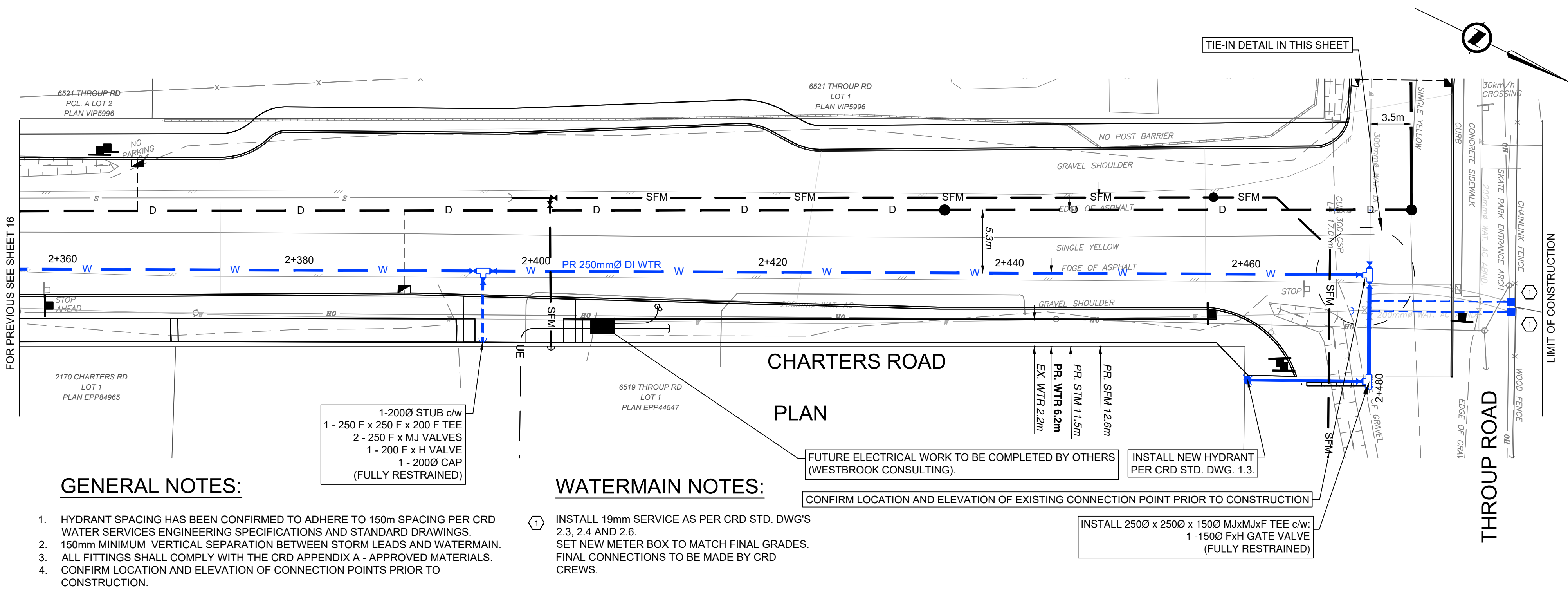


DRAWING TITLE:	PLAN & PROFILE STA 1+080 TO STA 1+180
PROJECT TITLE:	CHARTERS ROAD
PROJECT LOCATION:	DISTRICT OF SOOKE

DRAWING No.	REV.	SHEET
32859	0	16
		34

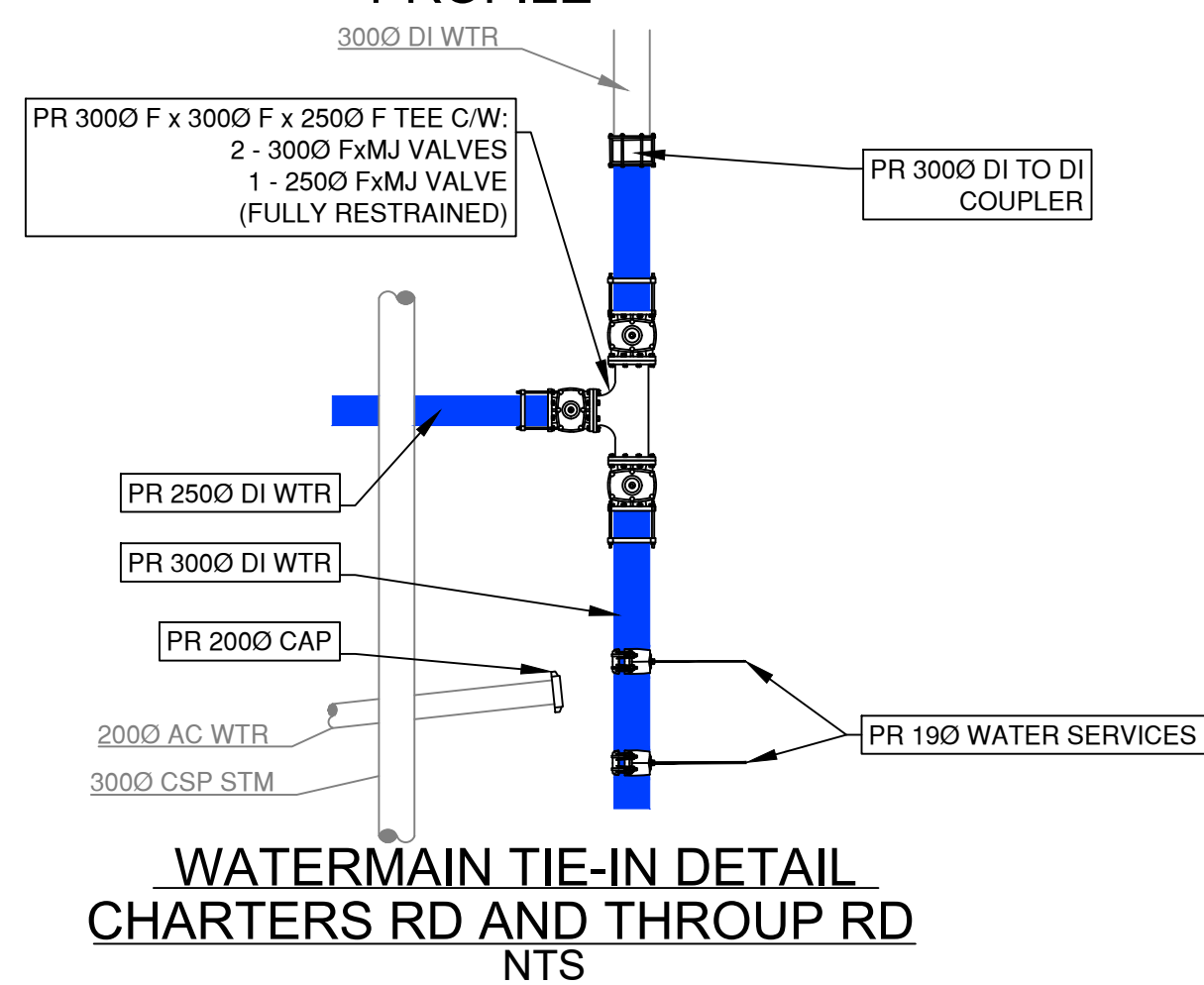
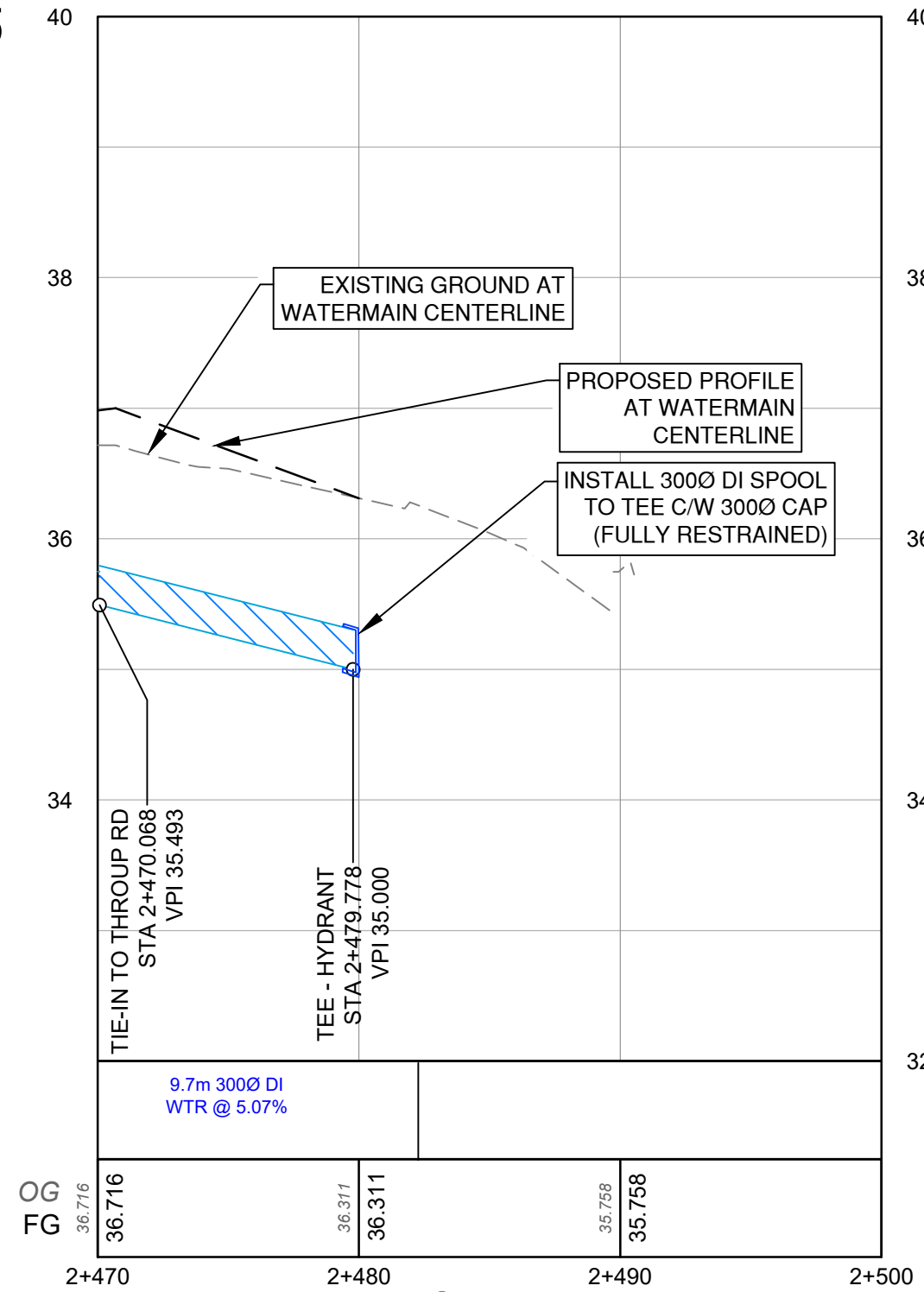
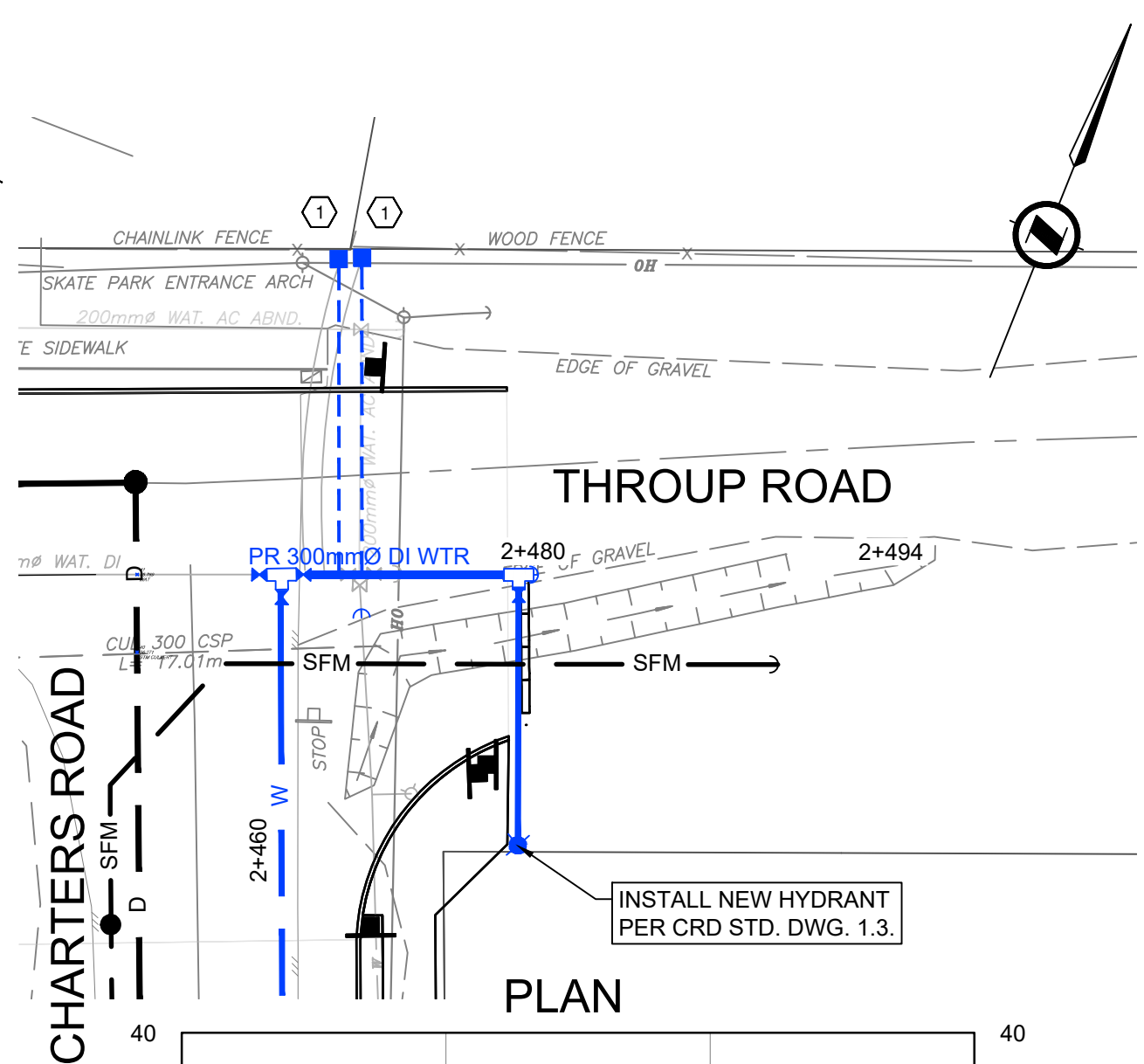
DESTROY PRINTS BEARING PREVIOUS NUMBER

FILENAME: 30895_SH_WATERMAIN.dwg
LAST SAVED DATE & TIME: Wednesday, May 31, 2023 2:39 PM
LAST SAVED BY: CODY LE



ISSUED
FOR TENDER

JUNE 9, 2023



No.	DATE	BY	REVISION
0	230609	CD	ISSUED FOR TENDER

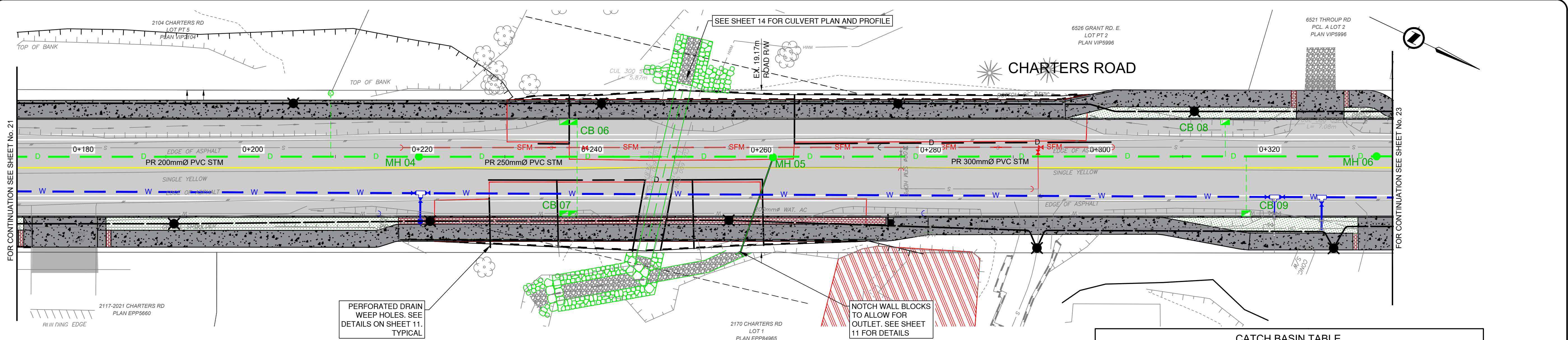
JOB NUMBER:	32859	
DESIGNED BY	BJO	230401
DRAWN BY	AP/AA	230501
CHECKED BY	BJO	230519
APPROVED BY	IM	230523

SCALE:	HORIZ: 1:250	VERT: 1:25
SEAL:		

DRAWING TITLE:	PLAN & PROFILE STA 1+080 TO STA 1+180
PROJECT TITLE:	CHARTERS ROAD
PROJECT LOCATION:	DISTRICT OF SOOKE

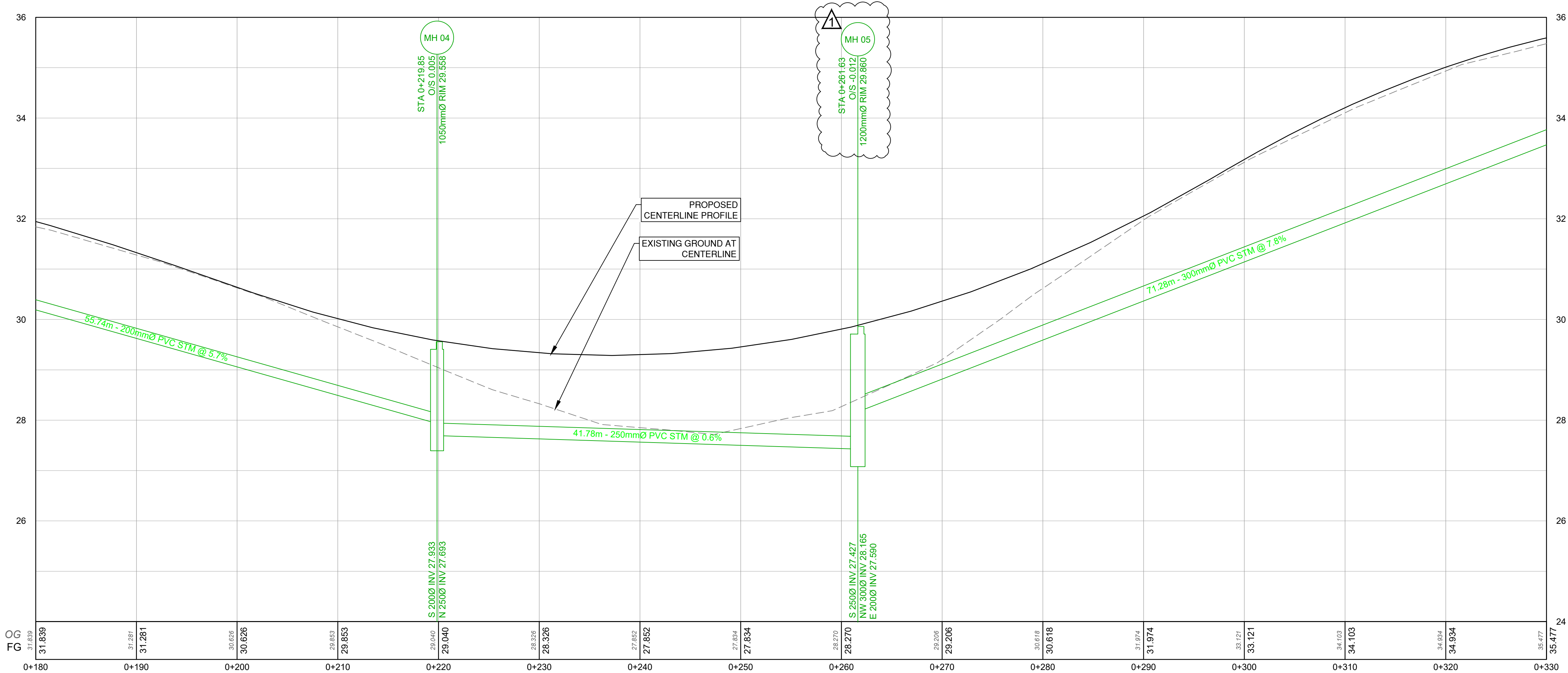
DRAWING No.	REV.	SHEET
32859	0	17
		34

DESTROY PRINTS BEARING PREVIOUS NUMBER

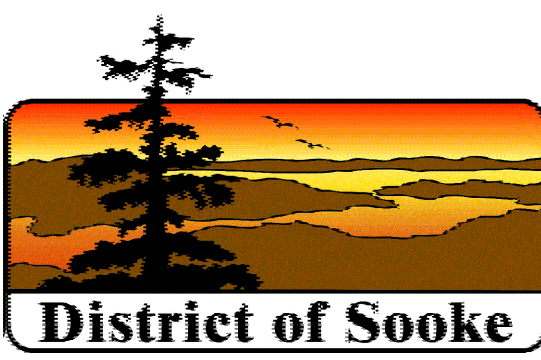


DRAINAGE MAIN PLAN

CATCH BASIN TABLE			
CB NUMBER	RIM ELEVATION	STATION	OFFSET
CB 06	29.29	0+237.06	-4.37
CB 07	29.29	0+237.12	7.01
CB 08	34.50	0+315.02	-4.37
CB 09	34.72	0+317.50	7.02




DRAINAGE MAIN PROFILE



District of Sooke

Rev. 1	230609	CD	Addendum 1
Rev. 0	230526	APIAA	ISSUE FOR TENDER
No.	DATE	BY	REVISION

JOB NUMBER:	32859	
DESIGNED BY:	BJO	20230401
DRAWN BY:	APIAA	230501
CHECKED BY:	BJO	230519
APPROVED BY:	IM	230526
SCALE:	HORIZ: 1:250 VERT: 1:25	
SEAL:		



ISL Engineering and Land Services

DRAWING TITLE:

STORM STA 0+330 TO STA 0+465

PROJECT TITLE:

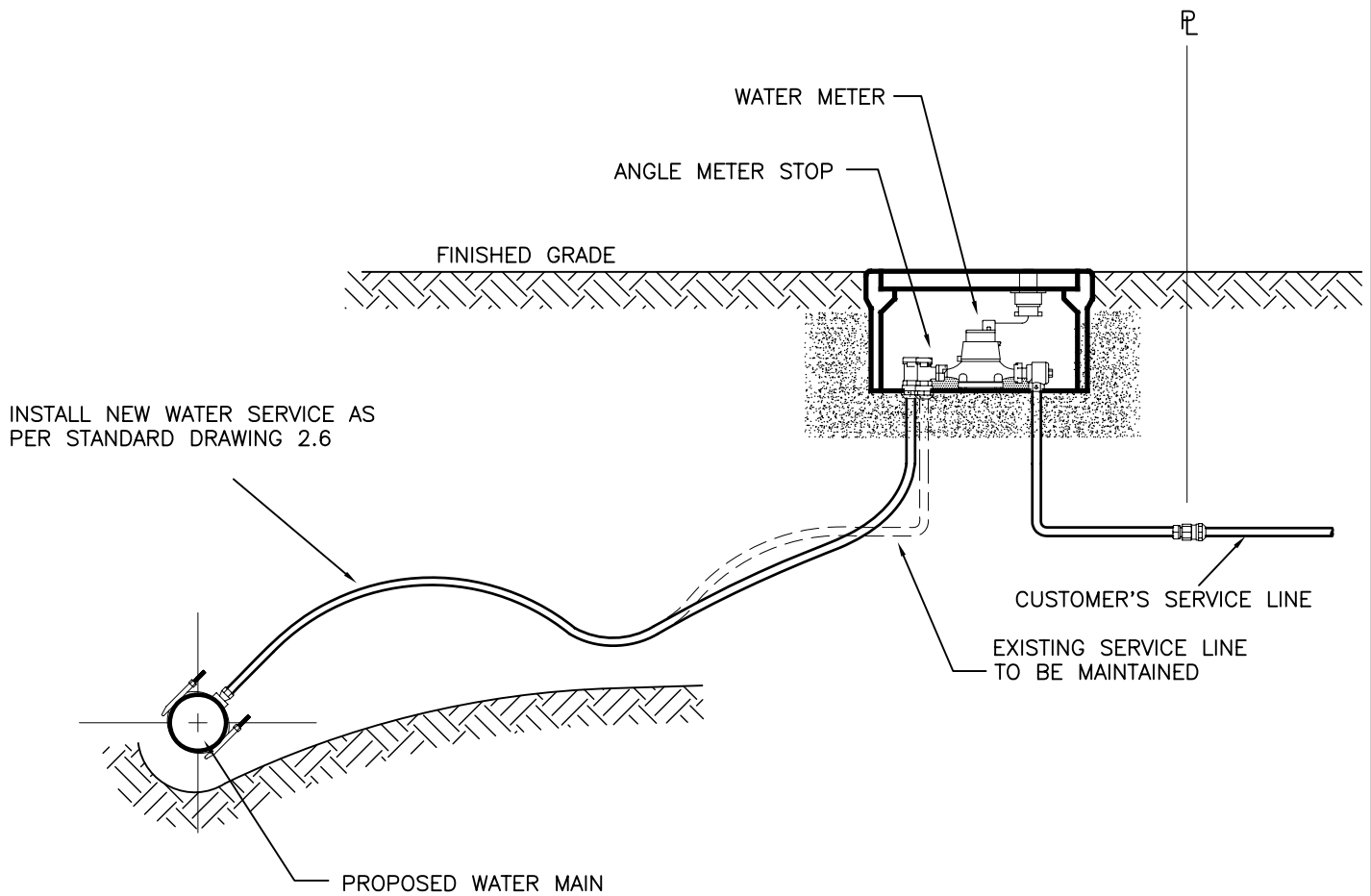
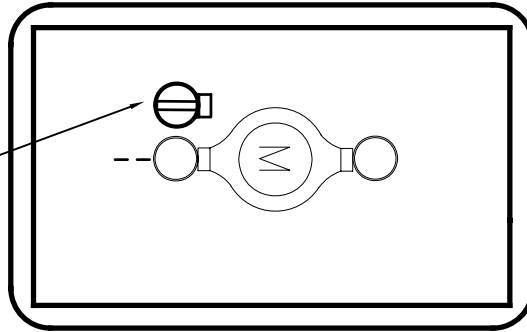
CHARTERS ROAD

PROJECT LOCATION:

DISTRICT OF SOOKE

DRAWING No.	REV.	SHEET
32859	1	22

POSITION NEW ANGLE METER STOP
ADJACENT TO THE EXISTING ANGLE METER
STOP WITHIN METER BOX. MAXIMUM
SEPARATION = 25mm



Making a difference...together

EXISTING SERVICE REPLACEMENT

revision date:	scale:
APRIL 2007	N.T.S.
drawn:	checked:
GP/DR	C. GOTTFRED

standard drawing no.:

2.4

UNIT
PRICE
CONTRACT

TENDER T02-2023
CHARTERS ROAD - STREETSCAPE
Sooke, B.C.
FORM OF TENDER

REVISED ADD #1 FT
PAGE 5 OF 16
MAY 2023

DIVISION 1 - GENERAL REQUIREMENTS						
Item No.	Section	Specification Title	Unit	Qty	Unit Price	Amount
01 10 00SS General Requirements						
1.1	1.2S	Layout Survey, Quantity Survey, Volume Calculations and Record Survey	Lump Sum	1		
01 51 01 Temporary Utilities and Lighting						
1.2	1.6.1	Supporting Utilities Underground/Overhead	Lump Sum	1		
01 52 01 Temporary Structures						
1.3	1.6.2S	Mobilization/Demobilization	Lump Sum	1		
01 53 01 Temporary Facilities						
1.4	1.9.2S	By-Pass Pumping Sanitary System	Lump Sum	1		
01 55 00 Traffic Control, Vehicle Access and Parking						
1.5	1.5.2S	Traffic Control, Vehicle Access and Parking	Lump Sum	1		
01 57 01 Environmental Protection						
1.6	1.6.2S	Environmental Protection	Lump Sum	1		
Sub-Total					\$	

DIVISION 3 - CONCRETE						
Item No.	Section	Specification Title	Unit	Qty	Unit Price	Amount
03 30 20 Concrete Walks, Curb And Gutter						
2.1	1.4.3	Hand Formed / Machine Laid Curb and Gutter Barrier Concrete Barrier - MMCD Type C4 - Including Granular Base, Driveway Drops, & Let Downs.	Lineal Metre	1075		
2.2	1.4.5S	Concrete Sidewalks, Infill Strips and Walkways Including Ramps Where Applicable. MIN. 100mm Thickness c/w 100mm Base.	Square Metre	1685		
2.3	1.4.5S	Pattern Concrete Sidewalks, Infill Strips and Walkways Including Ramps Where Applicable. MIN. 100mm Thickness c/w 100mm Base.	Square Metre	85		
2.4	1.4.6	Driveways and Driveway Crossings 150 mm Thickness c/w Granular Base. Crossings To Be c/w Ramps.	Square Metre	415		
2.5	1.4.8	Adjustments Adjustments To Frames, Covers, Lids, Valve, Junction Boxes, Catch basins, Inspection Chambers.	Each	20		
03 30 53 Cast-In-Place Concrete						
2.6	1.5.6S	Mortared Rock Wall - Optional	Square Meters	200		

UNIT
PRICE
CONTRACT

TENDER T02-2023
CHARTERS ROAD - STREETSCAPE
SOOKE, B.C.
FORM OF TENDER

REVISED ADD #1 FT
PAGE 6 OF 16
MAY 2023

03 40 01 Pre-Cast Concrete						
2.7	1.4.3	Redi-Rock Wall Blocks Excavation and Backfill under 31 23 01	Square Metre	612		
2.8	1.4.5S	Concrete No-Post Barrier Relocation	Lump Sum	1		
Sub-Total					\$	

DIVISION 26 - ELECTRICAL						
Item No.	Section	Specification Title	Unit	Qty	Unit Price	Amount
26 56 01 Roadway Lighting						
3.1	1.9.1	Roadway Lighting	Lump Sum	1		
Sub-Total					\$	

DIVISION 31 - EARTHWORK						
Item No.	Section	Specification Title	Unit	Qty	Unit Price	Amount
31 11 01 Clearing and Grubbing						
4.1	1.4.1, 1.4.2	Clearing and Grubbing	Lump Sum	1		
4.2	1.4.1, 1.4.2	Isolated Stump Removal	Each	36		
4.3	1.4.1, 1.4.2	Isolated Tree Removal	Each	12		
31 22 01 Site Grading						
4.4	1.4.1	Topsoil Stripping and Disposal/Reuse	Cubic Metre	200		
31 22 16 Reshaping Granular Roadbed						
4.5	1.4.1	Reshaping Granular Roadbed	Square Metre	3076		
31 23 01 Excavating, Trenching and Backfilling						
4.6	1.10.3	Over excavating - Optional Including Backfilling	Cubic Metre	275		
31 23 17 Rock Removal						
4.7	1.6.3	Mass Rock - Optional	Cubic Metre	50		
31 24 13 Roadway Excavation, Embankment and Compaction						
4.8	1.8.4	Remove Existing Asphalt Pavement, Sidewalks, Utility Strips, Driveways (Including Saw cutting)	Square Metre	4800		
4.9	1.8.4	Remove Existing Concrete Curbs and Gutters	Lineal Metres	60		
4.10	1.8.5	Common Excavation - Gravels On-Site Re-Use	Cubic Metre	225		
4.11	1.8.5	Common Excavation Off-Site Disposal	Cubic Metre	3500		
4.12	1.8.14S	Removal of Existing Driveway Culverts	Lineal Metres	214		
4.13	1.8.15S	Removal of Existing Throug Stream Culverts	Lineal Metres	50		
4.14	1.8.16S	Asbestos Cement Pipe Removal and Disposal	Lineal Metres	90		

DIVISION 32 - ROAD AND SITE IMPROVEMENTS						
Item No.	Section	Specification Title	Unit	Qty	Unit Price	Amount
32 11 16.1 Granular Sub-Base						
5.1	1.4.2	Granular Sub-Base - Roadway Variable Thickness for Roads or Sidewalks	Cubic Metre	3000		
5.2	1.4.2	25mm Clear Crush Rock - Including Non-Woven Geotextile Wall - Block Infill	Tonne	400		
5.3	1.4.2	75mm Select, Well Graded, Crushed Rock Wall - Leveling Pad	Tonne	170		
5.4	1.4.2	150 - 300mm Minus Well Graded Crush Rock Wall	Tonne	8000		
5.5	1.4.2	75 - 450mm Minus Well Graded Crush/Blast Rock Wall	Tonne	3500		
5.6	1.4.2	Pit Run Gravel - Roadway Variable Thickness for Roads or Sidewalks	Tonne	275		
32 11 23 Granular Base						
5.7	1.4.1	Granular Base Roadway Variable Thickness for Roads or Sidewalks	Tonne	1732		
32 12 13.1 Asphalt Tack Coat						
5.8	1.5.1	Asphalt Tack Coat	Square Metres	6670		
32 12 13.2 Asphalt Prime						
5.9	1.5.1	Asphalt Prime	Square Metres	6670		
32 12 16 Hot-Mix Asphalt Concrete Paving						

UNIT PRICE CONTRACT	TENDER T02-2023		REVISED ADD #1 FT PAGE 8 OF 16 MAY 2023
	CHARTERS ROAD - STREETSCAPE		
	Sooke, B.C.		
	FORM OF TENDER		

5.10	1.5.1S, 1.5.2	Asphalt Pavement - Base Course LC#1 (40mm Compacted Thickness)	Square Metres	6670		
5.11	1.5.1S, 1.5.2	Asphalt Pavement - Upper Course UC #1 (40mm Compacted Thickness)	Square Metres	6670		
5.12	1.5.3	Asphalt Sidewalk 50mm Thick Hot Mix Asphalt, Including Ramps	Square Metres	100		
5.13	1.5.3	Asphalt Driveway 50mm Thickness Hot Mix Asphalt	Square Metres	100		
5.14	1.5.4	Extruded Asphalt Curb (Optional)	Lineal Metres	50		
32 17 23 Painted Pavement Markings						
5.15	1.5.3	Thermoplastic Pavement Markings	Lump Sum	1		
32 31 13 Chain Link Fences & Gates						
5.16	1.5.4S	MoTi Steel Sidewalk Fencing	Lineal Metres	130		
5.17	1.5.4S	Mortar Rock Hand Railing - MMCD C14 - Optional	Lineal Metres	200		
32 91 21 Topsoil and Finish Grading						
5.18	1.4.1S	Growing Medium (Topsoil 150mm)	Square Metres	1480		
32 92 20 Seeding						
5.19	1.8.1	Seeding	Square Metres	1480		
				Sub-Total	\$	

DIVISION 33 - UTILITIES						
Item No.	Section	Specification Title	Unit	Qty	Unit Price	Amount
33 11 01 Waterworks						
6.1	1.8.1, 1.8.1	Watermain DI 300 mm Diameter Depth of Main 0 - 2m. Imported Granular Backfill	Lineal Metres	13		
6.2	1.8.1, 1.8.2	Watermain PVC 250 mm Diameter Depth of Main 0 - 2m. Imported Granular Backfill	Lineal Metres	470		
6.3	1.8.1, 1.8.2	Watermain PVC 200 mm Diameter Depth of Main 0 - 2m. Imported Granular Backfill	Lineal Metres	17		
6.4	1.8.1, 1.8.3	Watermain PVC 150 mm Diameter Depth of Main 0 - 2m. Imported Granular Backfill	Lineal Metres	3		
6.5	1.8.3	Gate Valves 200 mm c/w Mechanical Restraints	Each	2		
6.6	1.8.3	Gate Valves 250 mm c/w Mechanical Restraints	Each	7		
6.7	1.8.3	Gate Valves 300 mm c/w Mechanical Restraints	Each	2		
6.8	1.8.3	Bend 250mm diameter, 45 Degree, PVC c/w mechanical restraints and thrust blocks	Each	2		

UNIT
PRICE
CONTRACT

TENDER T02-2023
CHARTERS ROAD - STREETSCAPE
Sooke, B.C.
FORM OF TENDER

REVISED ADD #1 FT
PAGE 9 OF 16
MAY 2023

6.9	1.8.3	Tee 250x250x150mm Diameter	Each	1		
6.10	1.8.3	Tee 250x250x200mm Diameter	Each	2		
6.11	1.8.3	Tee 300x300x250mm Diameter	Each	1		
6.12	1.8.3	Reducer 250mm X 200mm diameter c/w mechanical restraints	Each	1		
6.13	1.8.3	Permanent Capping 200mm Diameter, Existing AC	Each	4		
6.14	1.8.3	Blind Flange Cap 300mm diameter (DI) c/w Mechanical restraints and thrust blocks	Each	1		
6.15	1.8.4S	Water Service Connections 19mm	Each	10		
6.16	1.8.4S	Water Service Connections 50mm	Each	2		
6.17	1.8.5S, 1.8.6S	Air-Release Valve & Chamber per CRD Standard Drawing 1.1	Each	1		
6.18	1.8.12	Watermain Tie -In Pipework by Contractor. Couplers & fittings Supplied By Contractor. Tie in completed by CRD Forces	each	2		
6.19	1.8.14S, 1.8.2	Hydrant Assembly Per CRD STD DWG 1.3	Each	5		
6.20	1.8.16S	Hydrant Removal Offsite disposal	Each	4		
6.21	1.8.17S	Cap and Abandon Existing Watermains and Valves	Lump Sum	1		
33 34 01 Sewage Force mains						
6.22	1.8.2, 1.8.3	Force main Pipe HDPE 100mm Diameter	Lineal Metres	360		
6.23	1.8.3	100mm Gate Valve	Each	4		
6.24	1.8.3	100mm x 100mm X 100mm Tee	Each	2		
6.25	1.8.3	Caps 100mm HDPE	Each	5		
6.26	1.8.3	Bend 100mm Degree of Bend. 45 Degree HDPE	Each	2		
6.27	1.8.5	Air Valve As per DoS STD DWG SD-SS02	Each	1		
6.28	1.8.5	Reinstate Low Point Drain Valve	Each	1		
6.29	1.8.10	Force main Tie -In 100mm Diameter Into Existing 100mm Diameter Sanitary Sewer or Existing Manhole	Each	3		
33 40 01 Storm Sewers						
6.30	1.6.1, 1.6.2	Drainage Pipe PVC SDR 200mm Diameter, Installed at Depth of 1-3m c/w Imported Backfill, 100mm - 19mm Granular Base and 250mm - 75mm Minus Pit Run Gravel.	Lineal Metres	284		

6.31	1.6.1, 1.6.2	Drainage Pipe PVC SDR Perforated 150mm Diameter, Installed at Depth of 1-3m c/w Imported Backfill, 100mm - 19mm Granular Base and 250mm - 75mm Minus Pit Run Gravel.	Lineal Metres	170		
6.32	1.6.1, 1.6.2	Drainage Pipe PVC SDR 300mm Diameter, Installed at Depth of 0-2m c/w Imported Backfill, 100mm - 19mm Granular Base and 250mm - 75mm Minus Pit Run Gravel.	Lineal Metres	265		
6.33	1.6.1, 1.6.2	Drainage Pipe PVC SDR 250mm Diameter, Installed at Depth of 1-3m c/w Imported backfill, 100mm - 19mm Granular Base and 250mm - 75mm Minus Pit Run Gravel.	Lineal Metres	45		
6.34	1.6.3, 1.6.2	Drainage Service Connections 100mm & 150mm Diameter Services per Service Connection Detail. Including Excavation, Disposal, Supply of Units, Cast In Place Concrete, Pipes, Fittings, Related Materials, Bedding, Backfill, Cleaning, Tie-In To Existing, Surface Restoration per 31-23-01 Section 3.6 (Excluding Permanent Pavement Restoration). All Other Related Works To Be Included.	Each	8		
6.35	1.6.5	Catch basin Lead 150mm Diameter	Lineal Metres	75		
33 42 13 Pipe Culvert						
6.36	1.5.1, 1.5.2	1.8m X1.8m Concrete Box Culvert - Includes 19mm Minus Crush and Coho Gravel as per Contract Drawings (Alternate sizes include 2.1m x 1.8m, 2.1m x 2.1m & 2.4mx2.1m)	Lineal Metres	21		
33 44 01 Manholes and Catch basins						
6.37	1.5.1.1S	Manhole Base, Lid, Slab, Cover, Riser, Frame, and All Other Components of a Complete Manhole 1050mm Diameter. Excavation, Fill.	Each	10		
6.38	1.5.1.1S	Manhole Base, Lid, Slab, Cover, Riser, Frame, and All Other Components of a Complete Manhole 1200mm Diameter. Excavation, Fill.	Each	1		
6.39	1.5.2	Top Inlet Catch Basin Standard Drawing S11	Each	13		
6.40	1.5.3	Inspection Chamber Standard Drawing S9,S12	Each	8		
				Sub-Total	\$	

DIVISION 33 - UTILITIES			
33 11 01		Waterworks	
	2.1	General	Add Clause 2.1.4 to read: "All Materials are to confirm to the latest version of the Capital Regional District's 'Appendix A Approved Materials' located on the CRD website."
	1.8	Measurement and Payment	Revise Clause 1.8.4: Replace references to Standard Drawings W2a and W2b with Capital Regional District Standard Drawings 2.4, 2.5, and 2.6.
	1.8	Measurement and Payment	Revise Clause 1.8.5: Replace reference to Standard Drawings W5 to W8 and W10 with Capital Regional District Standard Drawing 1.2.
	1.8	Measurement and Payment	Revise Clause 1.8.6: Replace reference to Standard Drawings W6 and W7 with Capital Regional District Standard Drawing 1.2.
	1.8	Measurement and Payment	Revise Clause 1.8.14: Replace reference to Standard Drawings W4 with Capital Regional District Standard Drawing 1.3.
	1.8	Measurement and Payment	Add Clause 1.8.16: "Payment for removal and offsite disposal of existing valve boxes and risers and fire hydrants includes excavation, backfilling and, where applicable, capping and temporary and permanent paving surface restoration to the satisfaction of the Contract Administrator."
	1.8	Measurement and Payment	Add Clause 1.8.17: "Payment for abandonment of existing valves identified on the contract drawings and abandonment of existing watermain will include all labour, equipment, and materials required to complete the abandonment to the satisfaction of the Contract Administrator. Payment will be made by lump sum upon completion of the works."
34 44 01		Manholes and Catch Basins	
	1.5	Measurement and Payment	Revise Clause 1.5.1.1 to Read: "Payment for Manhole base, lid, slab, frame and cover includes all components shown on standard Detail Drawings for manholes including risers. Payment includes dewatering, base preparation, all in-situ concrete work and the submission of shop drawings showing the base, lid, risers, castings and grade rings required for installation to design grades."
DIVISION 34 - TRANSPORTATION			
34 41 13		Traffic Signals	
	1.9	Measurement and Payment	Add Clause 1.9.4: "Payment for supply, relocation, and installation of traffic signs, signposts, bases, and sleeves will be made per each as shown on the Contract Drawings."