

TO: All Tenderers

FROM: McElhanney Ltd.

DATE: June 12, 2023

PROJECT: Church Road – Throup Road Roundabout - Tender

FILE NO: 2241-20128-01

1. PRECEDENCE

1. This Addendum shall form an integral part of the Work. This Addendum shall take precedence over all requirements of the Tender Documents with which it may prove to be at variance unless otherwise qualified by McElhanney.

2. PURPOSE

1. This addendum is in response to questions that were asked during the tender period.
2. This addendum provides additional information and instructions to the bidders.
3. The questions below are in no particular order.

3. INSTRUCTIONS

1. Revisions to Instructions to Tenderers – Part I (all revisions in red text)

- a. Section 4.9 updated – The Last Addendum will be posted by end of the day on **Wednesday June 21st, 2023**
- b. Section 4.11 updated – Fortis gas main relocation and 6588 Throup Rd service work will be occurring prior to the Contract Works and gas main lowering has been removed from the scope. The Contractor will be responsible for arranging Fortis’ supervision of all gas crossings and providing 5 business days’ notice.

2. Revisions / Additions to Form of Tender – Appendix 1 – Schedule of Quantities and Prices (all revisions in red text)

- a. 26.01 – Quantity increased to match drawings
- b. 26.03 – Quantity reduced and transferred to OPT 2.3
- c. 32.06 – Quantity increased to include new irrigation sleeve restoration per 6
- d. 33.04 – Quantity increased per Clarification 6

- e. 33.29 – Removed
- f. OPT 2.3 – Quantity increased
- g. OPT 2.18 - added

3. Revisions to Form of Tender – Appendix 6 – Social Procurement

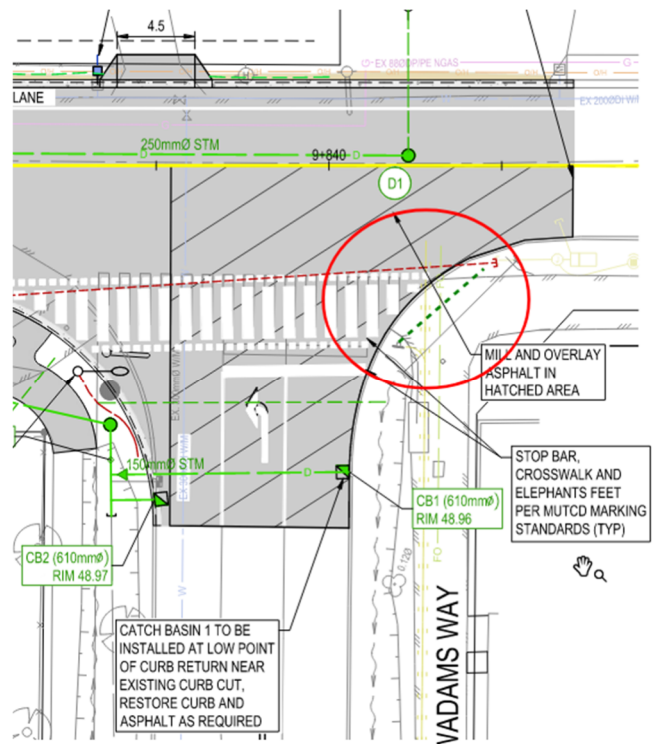
- a. 4 – Living wage in Victoria updated

4. Revisions to Form of Agreement

- a. Schedule 1 – Schedule of Contract Documents:
 - i. 8.17 – Fortis Gas Design Drawings removed; Chance Find Protocol for Archaeological Sites added
- b. Schedule 2 – List of Contract Drawings
 - i. BC Hydro Drawings replaced with “Issued for Construction” drawings

5. Revisions to Supplemental Specifications

- a. 01 57 01 – Clause 1.4.4 added
6. **Clarification** – Drawing C202 – Additional irrigation sleeve added – see sketch below. Asphalt restoration to be paid under line item 32.06 in Schedule of Quantities and Prices



7. Questions

- a. Is irrigation required only for the planting in the Roundabout, or is it required for the sod and hydroseeded areas as well?
 - i. **Irrigation is required in all planting and sod areas, but not in hydroseeded restoration areas.**
- b. Please confirm the location for the irrigation water source and size of supply line to be provided.
 - i. **The irrigation water will be sourced from an existing 50mm service c/w metered kiosk at the southwest corner of the Wadams Way intersection.**
- c. Electrical drawings reference hanging basket irrigation for type 'CC' luminaires. Should we allow for providing irrigation for these hanging baskets?
 - i. **Yes.**
- d. There is not an irrigation line item in the SOQ Optional Items. Is irrigation not required here?
 - i. **Irrigation is required in the Optional Works Section 2 area. Please refer to the revised Schedule of Quantities and Prices appended to this addendum.**
- e. Is supplementary traffic control for the facilitation line items subject to the gas line installation only?
 - i. **The gas line facilitation work has been removed from the scope as per 1b. Supplementary traffic control as required for CRD, BC Hydro and Telus overhead works will be the successful Contractor's responsibility, and to be included under line items 26.06, 33.01 and Optional Item 2.18 in the Schedule of Quantities and Prices.**
- f. Line item 31.02 - Is there to be additional length or an additional line item posted to accommodate for both the ditching and berming? Are any of these quantities already captured under common excavation / embankment fill?
 - i. **Line item 31.02 includes all ditching and berming required to construct the channel to design elevations. There are not quantities for this work included under common excavation and embankment fill.**
- g. Will there be line items posted for the manhole risers (all diameters)?
 - i. **Per the Supplemental Specifications, manhole risers are to be included within the manhole line item price for each respective size.**
- h. Will there be any line item posted with regards to asphalt removals or is this to be maintained under common excavation?

- i. **Per the Supplemental Specifications, asphalt removals are included in the Common Excavation line item.**
- i. Does the District have a disposal location for dumping spoils that would be available throughout the project?
 - i. **No.**
- j. Clarify the optional area on either drawing E1.00 & E1.01 for the optional bid item 2.3 - 90m of conduit & JB
 - i. **See the attached drawing markup for extent of Optional electrical works. It is assumed that if the successful Contractor is not awarded this work, it will be completed by others prior to the successful Contractor's work program.**
- k. Clarify the optional pole detail for bid item 2.2 optional streetlights (qty3) Are they type AA, BB, CC, or DD
 - i. **See Question j**
- l. Confirm the conduit sizes of 35mm, 41mm & 53mm are correct on the drawings.
 - i. **The noted sizes in the drawings are correct.**
- m. Between drawing E1.00 and E1.01 there are 17 poles & luminaires indicated on the drawing.
 - i. **See the revised Schedule of Quantities and Prices appended to the Addendum.**
- n. Is the MMA meant to be Chrome or Fluorescent Green?
 - i. **Fluorescent Green.**
- o. Are the hard copy plans available at the District of Sooke for this tender?
 - i. **No.**

4. ATTACHMENTS

Instruction to Tenderers – Part I – Issued for Addendum #1

Form of Tender – Appendix 1 – Schedule of Quantities and Prices – Issued for Addendum #1

Form of Tender – Appendix 6 – Social Procurement – Issued for Addendum #1

Form of Agreement – Issued for Addendum #1

Supplemental Specifications – Issued for Addendum #1

“Chance Find Protocol for Archaeological Sites” report

Updated BC Hydro design drawings

Electrical Drawing Mark-Up – E1.01 - Extents of Optional Work

1.0	Introduction.....	IT - 1
2.0	Tender Documents	IT - 1
3.0	Submission of Tenders	IT - 2
4.0	Supplemental Instructions to Tenderers.....	IT - 3

THIS PAGE INTENTIONALLY LEFT BLANK

(FOR USE WHEN UNIT PRICES FORM THE BASIS OF PAYMENT TO BE USED ONLY WITH THE GENERAL CONDITIONS AND OTHER STANDARD DOCUMENTS OF THE UNIT PRICE MASTER MUNICIPAL CONSTRUCTION DOCUMENTS.)

(TO BE READ WITH “INSTRUCTIONS TO TENDERERS - PART II”
CONTAINED IN THE EDITION OF THE PUBLICATION
“MASTER MUNICIPAL CONSTRUCTION DOCUMENTS” SPECIFIED IN ARTICLE 2.2 BELOW)

Owner: District Of Sooke

(NAME OF OWNER)

Contract: Church Road – Throup Road Roundabout

(TITLE OF CONTRACT)

Reference No.: 2241–20128-00

(OWNER'S CONTRACT REFERENCE NO.)

1.0 Introduction

1.1 These Instructions apply to and govern the preparation of tenders for this *Contract*. The *Contract* is generally for the following work:

Roundabout construction at intersection of Church Road and Throup
Road. Infrastructure generally includes removals, earthworks, road works,
storm sewer, utility relocations, street lighting and landscaping.

(BRIEF DESCRIPTION OF THE WORK)

1.2 Direct all inquiries regarding the *Contract*, to:

McElhanney Ltd.

Jon Irving, P.Eng., Engineering Division Manager

(NAME AND POSITION OF INDIVIDUAL WHO WILL ANSWER INQUIRIES)

Address: 500 – 3960 Quadra Street

Victoria, BC

V8X 4A3

Phone: 250 252 - 5192

Email: jirving@mcelhanney.com

2.0 Tender Documents

2.1 The tender documents which a tenderer should review to prepare a tender consist of all of the *Contract Documents* listed in Schedule 1 entitled “Schedule of Contract Documents”. Schedule 1 is attached to the Agreement which is included as part of the tender package. The *Contract Documents* include the drawings listed in Schedule 2 to the Agreement, entitled “List of *Contract Drawings*”.

2.2 A portion of the *Contract Documents* are included by reference. Copies of

these documents have not been included with the tender package. These documents are the Instructions to Tenderers - Part II, General Conditions, Specifications and Standard Detail Drawings. They are those contained in the publication entitled "Master Municipal Construction Documents - General Conditions, Specifications and Standard Detail Drawings". Refer to Schedule 1 to the Agreement or, if not specified in Schedule 1, then the applicable edition shall be the most recent edition as of the date of the *Tender Closing Date*. All sections of this publication are by reference included in the *Contract Documents*.

- 2.3 Any additional information made available to tenderers prior to the *Tender Closing Time* by the *Owner* or representative of the *Owner*, such as geotechnical reports or as-built plans, which is not expressly included in Schedule 1 or Schedule 2 to the Agreement, is not included in the *Contract Documents*. Such additional information is made available only for the assistance of tenderers who must make their own judgment about its reliability, accuracy, completeness and relevance to the *Contract*, and neither the *Owner* nor any representative of the *Owner* gives any guarantee or representation that the additional information is reliable, accurate, complete or relevant.

3.0 Submission of Tenders

- 3.1 Tenders must be submitted in a sealed envelope, marked on the outside with the above *Contract* Title and Reference No., and must be received by the office of:

Jeff Carter, Director of Operations

(TITLE OF POSITION)

on or before:

Tender Closing Time: _____ 2: 00 _____, _____ P_m local time
Tender Closing Date: June 23 _____, 20 23

at District Of Sooke

Address: 2205 Otter Point Road

Sooke, BC V9Z 1J2

Documents to be dropped off at front desk

- 3.2 Late tenders will not be accepted or considered, and will be returned unopened.

4.0 Supplemental
Instructions to
Tenderers

- 4.1 **Freedom of Information:** The District is subject to the provisions of the Freedom of Information and Protection of Privacy Act. As a result, while Section 21 of the Act does offer some protection for third party business interests, the District cannot guarantee that any information provided to the District can be held in confidence.
- 4.2 **Funding:** Proceeding with an award of this tender may be subject to available funding.
- 4.3 **Award:** The intent is to award the lowest bid price or bid prices but the lowest or any bid price will not necessarily be accepted. If the District elects to reject all bids, the District will not be liable to any bidder for any claims whether for costs incurred by any bidder in preparing the bid, damages, loss of anticipated profit in connection with the work, or any other matter whatsoever.
- 4.4 **Notice of Project:** Submit to WorkSafe BC a completed Notice of Project, providing a copy to the District.
- 4.5 **Construction Traffic Management Plan:** Submit to the Contract Administrator, prior to construction, a construction traffic management plan for review by the Contract Administrator and the Owner. See Supplemental Specifications for further details.
- 4.6 **Facsimile:** Faxed amendments or revocations will not be accepted.
- 4.7 **Inquiries:** All questions should be received at least 5 business days prior to the closing time and date.
- 4.8 **Working Hours:** The Contractor is required to abide by the following working hours set out in the District of Sooke Noise Bylaw
- 4.9 **Important Dates:**
- .1 The Last Addendum will be posted by the end of the day
Wednesday June 21st, 2023
- 4.10 **Superintendent:** The *Owner* reserves the right to object to the *Superintendent* listed in the tender. If the *Owner* objects to the *Superintendent* then the *Owner* will permit a tenderer to, within 5 days, propose a substitute *Superintendent* acceptable to the *Owner* provided that there is no resulting adjustment in the *Tender Price* or the completion date set out in paragraph 2.2 of the Form of Tender. A tenderer will not be required to make such a substitution and, if the *Owner* objects to a listed *Superintendent*, the tenderer may, rather than propose a substitute *Superintendent*, consider its tender rejected by the *Owner* and by written notice withdraw its tender. The *Owner* shall, in that event, return the tenderer's bid security.
- 4.11 **Work By Other Utilities:** As noted in the Contract Drawings and Schedule of Quantities, there is work by other utility companies associated with the project, including Fortis gas crossing supervision, CRD waterworks, BC Hydro Overhead works and Telus Overhead works. It is expected that the Contractor accommodate the work programs as they will coincide with the

project's phasing and scope of work.

- 4.12 **Contaminated Soils:** The District of Sooke is undertaking onsite soil sampling and reporting in compliance with Protocol 19 For Contaminated Sites issued by the Ministry of Environment and Climate Change, which will take place during the tender period. Results will be shared with the preferred bidder and depending on the results, may result in pricing negotiations, as required.
- 4.13 **Schedule:** See critical dates in Appendix 2 of the Form of Tender

FORM OF TENDER

APPENDIX 1 – SCHEDULE OF QUANTITIES AND PRICES

Form of Tender - Appendix 1

SCHEDULE OF QUANTITIES AND PRICES
(See paragraph 5.3.1 of the Instructions to Tenderers - Part II)

(All prices and *Quotations* including the *Contract Price* shall include all *Taxes*, but shall not include *GST*.)

Any work called for in these Contract Documents, shown on the plans, or which is necessary for the completion of the Work called for in these Contract Documents and which is not specifically listed as a separate payment item in this Appendix shall be deemed incidental to the performance of the Work and to the general purpose of the Contract; no separate payment will be made on account of any such Work, but the costs of any such incidental Work shall be included in the Unit and Lump Sum Prices.

Summary Sheet

Division 01:	General Requirements	\$ _____
Division 03:	Concrete	\$ _____
Division 26:	Electrical	\$ _____
Division 31:	Earthworks	\$ _____
Division 32:	Roads and Site Improvements	\$ _____
Division 33:	Utilities	\$ _____
Optional Items		\$ _____

TOTAL TENDER PRICE	\$ _____
GST (5%)	\$ _____
TENDER PRICE plus GST	\$ _____

Tenderer's Initials _____

DIV 01		GENERAL REQUIREMENTS				
Item No.	Section	Specification Title	Unit	Quantity	Unit Price	Amount
	01 10 01SS	Quality Control Testing				
1.01	1.1	Quality Control Testing	Lump Sum	1		
	01 10 01SS	Survey				
1.02	1.2	Layout Survey, Quantity Survey, Volume Calculations, and Record Survey	Lump Sum	1		
	01 52 01	Temporary Structures				
1.03	1.6.2ss	Mobilization & De-mobilization	Lump Sum	1		
	01 55 00	Traffic Control, Vehicle Access and Parking				
1.04	1.4.15ss	Traffic Management Plan	Lump Sum	1		
	01 57 01	Environmental Protection				
1.05	1.6.2ss	Environmental Protection	Lump Sum	1		
	01 58 01	Project Identification				
1.06	1.2.1.1ss	Project Identification	Lump Sum	1		
Sub-Total					\$	

DIV 03		CONCRETE				
Item No.	Section	Specification Title	Unit	Quantity	Unit Price	Amount
	03 30 20	Concrete Walks, Curbs and Gutters				
3.01	1.4.3	Concrete Curb & Gutter Non-mountable (incl. let-downs, Regular and Reverse Gutter)	Lineal Metre	885		
3.02	1.4.3	Concrete Curb & Gutter Mountable (Regular and Reverse Gutter)	Lineal Metre	110		
3.03	1.4.3	Concrete Curb & Gutter Median Curb	Lineal Metre	45		
3.04	1.4.5	Concrete Sidewalk and Walkways 100mm thickness, non-reinforced	Square Metre	190		
	03 40 01	Pre-cast Concrete				
3.05	1.4.2ss	Concrete Lock Block Retaining Wall Including Shop Drawings	Square Metre	75		
3.06	N/A	Restoration of Existing Allan Block Retaining Wall Following Construction (2207 Church Road)	Lump Sum	1		
Sub-Total					\$	

Tenderer's Initials _____

DIV 26		ELECTRICAL				
Item No.	Section	Specification Title	Unit	Quantity	Unit Price	Amount
	26 56 01	Roadway Lighting				
26.01	1.9.4ss	Streetlight Pole incl. Base	Each	14		
26.02	1.9.4ss	Relocate Existing Streetlight Pole incl. Base	Each	1		
26.03	1.9.4ss	Streetlight Wiring & Conduit incl. Junction Boxes	Lineal Metre	445		
26.04	1.9.4ss	Pedestrian Flashers	Each	6		
		Electrical Works				
26.05	N/A	Underground Electrical Works – Complete, as per BC Hydro Drawing 500-U07-08875	Lump Sum	1		
26.06	N/A	Facilitate Overhead Pole Relocation works to be completed by BC Hydro and Telus – per BC Hydro Drawing 500-D07-03041	Lump Sum	1		
Sub-Total					\$	

DIV 31		EARTHWORKS				
Item No.	Section	Specification Title	Unit	Quantity	Unit Price	Amount
	31 11 01	Clearing and Grubbing				
31.01	1.4.1, 1.4.2	Clearing & Grubbing	Lump Sum	1		
	31 23 01	Excavation, Trenching and Backfilling				
31.02	1.10.6	Roadside Channel Excavation & Berming (North of Roundabout)	Lineal Metre	45		
31.03	1.10.6	Trailside Ditch (South of Roundabout)	Lineal Metre	45		
	31 24 13	Roadway Excavation, Embankment and Compaction				
31.04	1.8.14ss, 1.8.12	Common Excavation Including Removals, Stripping, Excavation to Subgrade - Off-Site Disposal	Cubic Metre	3150		
31.05	1.8.7	Embankment Fill	Cubic Metre	1000		
31.06	1.8.9	Subgrade Preparation	Square Metre	7250		
	31 32 19	Geosynthetics				
31.07	1.6.1	Non woven geotextile (Channel)	Square Metre	90		
	31 37 10	RipRap				
31.08	1.4.1	Class 25kg Riprap (Channel)	Cubic Metre	15		
31.09	1.4.1	River Rock (Cobbles, Channel bed)	Cubic Metre	5		
Sub-Total					\$	

Tenderer's Initials _____

DIV 32		ROADS AND SITE IMPROVEMENTS				
Item No.	Section	Specification Title	Unit	Quantity	Unit Price	Amount
	32 01 16.7	Cold Milling				
32.01	1.5.1	Cold Milling Including disposal offsite	Square Metres	305		
	32 11 23	Granular Sub-Base				
32.02	1.4.3	Granular Sub-Base 300mm Thickness - Roads	Square Metres	5350		
32.03	1.4.3	Granular Sub-Base 150mm Thickness - Sidewalks, MUP & Driveways	Square Metres	1900		
	32 11 23	Granular Base				
32.04	1.4.2	Granular Base 150mm Thickness - Roads, MUP & Driveways	Square Metres	7060		
	32 12 16	Hot-Mix Asphalt Concrete Paving				
32.05	1.5.1ss, 1.5.2	Asphalt Pavement 80mm thickness – Roads	Square Metres	4150		
32.06	1.5.3ss, 1.5.2	Asphalt Pavement 50mm thickness – Trails & Driveways, including stamped tactile warning strips	Square Metres	1538		
32.07	1.5.1ss, 1.5.2	Asphalt Pavement 40mm thickness – Milled Areas	Square Metres	305		
32.08	1.5.1ss, 1.5.2	Stamped Coloured Asphalt Pavement 80mm thickness – Mountable Islands, Red, Herringbone Pattern	Square Metres	285		
32.09	1.5.1ss, 1.5.2	Stamped Coloured Asphalt Pavement 50mm thickness – Non-mountable Islands, Buffer Strips, Red, Herringbone Pattern	Square Metres	135		
32.10	1.5.4	Asphalt Curb	Lineal Metres	55		
	32 17 23	Painted Pavement Markings				
32.11	1.5.2	Painted pavement markings, permanent	Lump Sum	1		
32.12	1.5.3	Thermoplastic Pavement Markings, permanent	Lump Sum	1		
32.13	1.5.5ss	Traffic Control Signs, including poles and concrete base	Each	15		
32.14	1.5.6ss	Relocated Existing Traffic Control Signs, including poles and concrete base	Each	1		
32.15	1.5.5ss	Flexible Delineators	Each	21		
	32 31 13	Chain Link Fences & Gates				
32.16	1.5.4ss	Handrail (On Retaining Wall)	Lineal Metre	37		
	32 91 21	Topsoil and Finish Grading				
32.17	1.4.1	Imported Topsoil 150mm thickness	Square Metres	2210		
32.18	1.4.1	Growing Medium (Roundabout Button) 450mm thickness	Square Metres	150		

Tenderer's Initials _____

	32 92 19	Hydraulic Seeding				
32.19	1.8.1, 1.8.2	Hydraulic Seeding	Square Metres	725		
	32 92 23	Sodding				
32.20	1.8.1	Sod	Square metre	685		
	32 93 01	Planting of Trees, Shrubs & Ground Cover				
32.21	1.9.1	Shrubs & Ground Cover (Roundabout Button)	Lump Sum	1		
32.22	1.9.3ss	Irrigation System (Design-Build)	Lump Sum	1		
32.23	1.9.1, 1.9.4ss	Re-plant Native Riparian Plantings (Channel Banks) – Salvage, if possible	Square Metres	200		
Sub-Total					\$	

DIV 33		UTILITIES				
Item No.	Section	Specification Title	Unit	Quantity	Unit Price	Amount
	33 11 01	Waterworks				
33.01	1.8.12ss	Facilitate CRD Water Works – Meter Box Relocations/Upgrades, Main Lowering	Lump Sum	1		
	33 34 01	Sewage Force mains				
33.02	1.8.1, 1.8.2, 1.8.3	Existing Sanitary Force main Lowering	Lineal Metres	10		
33.03	1.8.1, 1.8.2	Sanitary Force main Service – 75mm, complete (6588 Throup Rd)	Each	1		
	33 40 01	Storm Sewers				
33.04	1.6.1, 1.6.2	Irrigation Sleeve - 100mm diameter PVC SCHD 40 (Driveways, MUP)	Lineal Metres	120		
33.05	1.6.1, 1.6.2	Irrigation Sleeve - 150mm diameter PVC SCHD 40 (Roads)	Lineal Metres	50		
33.06	1.6.1, 1.6.2	Drainage Pipe PVC SDR 35 250mm diameter, imported backfill (1-4m depth)	Lineal Metres	172		
33.07	1.6.1, 1.6.2	Drainage Pipe PVC SDR 35 300mm diameter, imported backfill (1-4m depth)	Lineal Metres	18		
33.08	1.6.1, 1.6.2	Drainage Pipe HDPE N12 450mm diameter, imported backfill (1-4m depth)	Lineal Metres	28		
33.09	1.6.1, 1.6.2	Drainage Pipe HDPE N12 600mm diameter, imported backfill (1-4m depth)	Lineal Metres	237		
33.10	1.6.1, 1.6.2	Drainage Pipe HDPE N12 900mm diameter, imported backfill (1-4m depth)	Lineal Metres	25		
33.11	1.6.1, 1.6.2	Drainage Pipe HDPE N12 1050mm diameter, imported backfill (1-4m depth)	Lineal Metres	46		
33.12	1.6.3	Drainage Service Connection 100mm c/w Inspection Chamber	Each	9		
33.13	1.6.3	Drainage Service Connection 200mm c/w Inspection Chamber	Each	1		
33.14	1.6.5	Catchbasin Lead 150mm diameter	Lineal Metres	145		

Tenderer's Initials _____

33.15	1.6.9	Drainage Tie -In Tie Into Existing Storm System	Each	5		
	33 42 13	Pipe Culvert				
33.16	1.5.3	Precast Headwall 300mm Storm Pipe	Each	1		
33.17	1.5.3	Precast Headwall 450mm Storm Pipe c/w grillage	Each	1		
33.18	1.5.3	Precast Headwall 600mm Storm Pipe c/w grillage	Each	1		
33.19	1.5.3	Precast Headwall 1050mm Storm Pipe c/w grillage and handrail	Each	2		
	33 44 01	Manholes and Catchbasins				
33.20	1.5.1.1ss	Manhole base, lid, slab,cover and frame - 1050mm diameter	Each	4		
33.21	1.5.1.1ss	Manhole base, lid, slab,cover and frame - 1200mm diameter	Each	6		
33.22	1.5.1.1ss	Manhole base, lid, slab,cover and frame - 1500mm diameter	Each	1		
33.23	1.5.1.1ss	Manhole base, lid, slab,cover and frame - 1800mm diameter	Each	1		
33.24	1.5.1.1ss	Manhole base, lid, slab,cover and frame - 2100mm diameter	Each	1		
33.25	1.5.1.1ss	Manhole base, lid, slab,cover and frame - 2400mm diameter	Each	2		
33.26	1.5.2	Catchbasin Top Inlet Standard Drawing S11	Each	20		
33.27	1.5.2	Offset Catchbasin Top Inlet	Each	1		
33.28	1.5.3	Adjustment of Existing Lids - Outside of Roadway	Each	14		
Sub-Total					\$	

Tenderer's Initials _____

OPTIONAL ITEMS
(Included in Tender Price)

This section forms part of the Contract Documents and is to be read, interpreted and coordinated with all other parts.

Optional items quoted on will be reviewed and accepted or rejected at the Owner's option. Accepted optional items prices will be identified in the construction agreement.

Coordinate related work and modify surrounding work to integrate the Work of each optional item.

Prices quoted should not include GST.

Item No.	Section	Specification Title	Unit	Quantity	Unit Price	Amount
1.0	OPT	Over-Excavation				
	31 24 13	Roadway Excavation, Embankment and Compaction				
1.1	1.8.14ss, 1.8.12	Common Excavation Excavation from Subgrade to Suitable Soils – Off-Site Disposal	Cubic Metre	2300		
1.2	1.8.7	Embankment Fill (Over-excavated Areas)	Cubic Metre	2300		
2.0	OPT	2182 Church Road – Frontage Works				
	03 30 20	Concrete Walks, Curbs and Gutters				
2.1	1.4.3	Concrete Curb & Gutter Non-mountable (incl. let-downs, Regular and Reverse Gutter)	Lineal Metre	32		
	26 56 01	Roadway Lighting				
2.2	1.9.4ss	Streetlight Pole incl. Base	Each	3		
2.3	1.9.4ss	Streetlight Wiring & Conduit incl. Junction Boxes	Lineal Metre	95		
	31 24 13	Roadway Excavation, Embankment and Compaction				
2.4	1.8.14ss, 1.8.12	Common Excavation Including Removals, Stripping, Excavation to Subgrade - Off-Site Disposal	Cubic Metre	350		
2.5	1.8.7	Embankment Fill	Cubic Metre	150		
2.6	1.8.9	Subgrade Preparation	Square Metre	362		
	32 11 23	Granular Sub-Base				
2.7	1.4.3	Granular Sub-Base 300mm Thickness - Roads	Square Metres	147		
2.8	1.4.3	Granular Sub-Base 150mm Thickness - MUP	Square Metres	215		
	32 11 23	Granular Base				
2.9	1.4.2	Granular Base 150mm Thickness - Roads, MUP & Driveways	Square Metres	362		

Tenderer's Initials _____

	32 12 16	Hot-Mix Asphalt Concrete Paving				
2.10	1.5.1ss, 1.5.2	Asphalt Pavement 80mm thickness - Roads	Square Metres	115		
2.11	1.5.3ss, 1.5.2	Asphalt Pavement 50mm thickness - MUP	Square Metres	220		
	32 17 23	Painted Pavement Markings				
2.12	1.5.2	Painted pavement markings, permanent	Lump Sum	1		
2.13	1.5.3	Thermoplastic Pavement Markings, permanent	Lump Sum	1		
2.14	1.5.5ss	Traffic Control Signs, including poles and concrete base	Each	3		
	32 91 21	Topsoil and Finish Grading				
2.15	1.4.1	Imported Topsoil 150mm thickness	Square Metres	800		
	32 92 23	Sodding				
2.16	1.8.1	Sod	Square metre	800		
	32 93 01	Planting of Trees, Shrubs & Ground Cover				
2.17	1.9.1	Trees – Garry Oak, 4.0cm cal, b&b (MDI Drawings)	Each	14		
2.18	1.9.3ss	Irrigation System (Design-Build)	Lump Sum	1		
	33 11 01	Waterworks				
2.19	1.8.12ss	Facilitate CRD Water Works – Church Rd Services, Main	Lump Sum	1		
	33 40 01	Storm Sewers				
2.20	1.6.1, 1.6.2	Irrigation Sleeve - 100mm diameter PVC SCHD 40 (Driveways, MUP)	Lineal Metres	10		
2.21	1.6.1, 1.6.2	Irrigation Sleeve - 150mm diameter PVC SCHD 40 (Roads)	Lineal Metres	28		
2.22	1.6.1, 1.6.2	Drainage Pipe PVC SDR 35 300mm diameter, imported backfill (1-4m depth)	Lineal Metres	10		
2.23	1.6.4	Drainage Clean Out	Each	1		
2.24	1.6.5	Catchbasin Lead 150mm diameter	Lineal Metres	7		
2.25	1.6.9	Drainage Tie -In Tie Into Existing Storm System	Each	1		
	33 44 01	Manholes and Catchbasins				
2.26	1.5.1.1ss	Manhole base, lid, slab, cover and frame - 1200mm diameter	Each	1		
2.27	1.5.2	Catchbasin Top Inlet Standard Drawing S11	Each	1		

Tenderer's Initials _____

3.0	OPT	Frances Gardens Storm System Replacement				
	31 32 19	Geosynthetics				
3.1	1.6.1	Non woven geotextile (Riprap Areas)	Square Metre	50		
	31 37 10	RipRap				
3.2	1.4.1	Class 50kg Riprap	Cubic Metre	26		
3.3	1.4.1	River Rock (Cobbles, Stream bed atop Riprap)	Cubic Metre	5		
	32 12 16	Hot-Mix Asphalt Concrete Paving				
3.4	1.5.3ss, 1.5.2	Asphalt Pavement 50mm thickness – Road Restoration	Square Metres	410		
3.5	1.5.4	Asphalt Curb	Lineal Metres	105		
	32 31 13	Chain Link Fences & Gates				
3.6	1.5.4ss	Chain Link Fence Restoration (on Retaining Wall)	Lump Sum	1		
	32 91 21	Topsoil and Finish Grading				
3.7	1.4.1	Imported Topsoil 150mm thickness	Square Metres	150		
	32 92 19	Hydraulic Seeding				
3.8	1.8.1, 1.8.2	Hydraulic Seeding	Square Metres	150		
	33 05 24	CIP Pipe Lining				
3.9	1.9.3, 1.9.8	900mm CSP Storm Sewer Lining, incl. Cleaning	Lineal Metres	50		
	33 40 01	Storm Sewers				
3.10	1.6.1, 1.6.2	Drainage Pipe HDPE N12 1200mm diameter, imported backfill (1-4m depth)	Lineal Metres	224		
3.11	1.6.5	Catchbasin Lead 150mm diameter	Lineal Metres	25		
3.12	1.6.9	Drainage Tie -In Tie Into Existing Storm System	Each	1		
	33 42 13	Pipe Culvert				
3.13	1.5.1	Concrete Box Culvert 1500mmx1800mm c/w fish baffles	Lineal Metres	18		
3.14	1.5.3	Precast Headwall 1200mm Storm Pipe	Each	1		
3.15	1.5.3	Precast Headwall 1500mmx1800mm Box Culvert	Each	2		

Tenderer's Initials _____

	33 44 01	Manholes and Catchbasins				
3.16	1.5.1.1ss	Manhole base, lid, slab,cover and frame - 2400mm diameter	Each	1		
		Miscellaneous				
3.17	N/A	Restoration of Existing Retaining Wall following Construction	Lump Sum	1		

Church Road – Throup Road Roundabout

(TITLE OF CONTRACT)

	Social Procurement Principles or Practices	Yes	No	N/A	Describe where applicable
Diverse Employment Policies and Practices					
1	Does your enterprise work with employment support services within the communities you operate?				Answer prompt: identify the employment support services that you engage with to address workplace needs
Employee Training, Wellness, and Apprenticeship Programs					
2	Does your enterprise provide employee training and development programs?				Answer prompt: describe- what type of training and development do you offer employees?
3	Does your enterprise provide apprenticeships?				Answer prompt: what types of apprenticeships do you host, how many annually, which colleges and institutions do you partner with?

Living Wages				
4	Does your enterprise pay your employees a living wage? The 2023 living wage for Victoria is \$24.29/hour.			<i>Answer prompt: what percentage of your employees earn above a living wage? What other considerations inform or influence your wages? What other benefits do you offer employees?</i>
Supply Chain Considerations				
5	Do you consider social value in your production process and/or supply chain (e.g. local sourcing for labour and/or materials, social and environmental considerations)			<i>Answer prompt: Describe your process for contracting suppliers- what criteria do you use in selecting and working with your suppliers?</i>
Other Community Benefits				
6	Does your enterprise support community initiatives and/or non-profits in the communities you operate?			<i>Answer prompt: Provide an example of a non-profit partnership, community initiative or other community contributions, outside of your regular course of business, that demonstrates your community engagement</i>

(FOR USE WHEN UNIT PRICES FORM THE BASIS OF PAYMENT TO BE USED ONLY WITH THE GENERAL CONDITIONS AND OTHER STANDARD DOCUMENTS OF THE UNIT PRICE MASTER MUNICIPAL CONSTRUCTION DOCUMENTS.)

BETWEEN OWNER AND CONTRACTOR

This agreement made in duplicate this

_____ day of _____, 20__23__.

CONTRACT: Church Road – Throup Road Roundabout

REFERENCE No. 20128-01

BETWEEN:

The District Of Sooke
(the “Owner”)

AND:

(NAME AND OFFICE ADDRESS OF CONTRACTOR)

(the “Contractor”)

THE OWNER AND THE CONTRACTOR AGREE AS FOLLOWS:

- | | | |
|--|-----|--|
| Article 1 THE WORK
START /
COMPLETION
DATES | 1.1 | The <i>Contractor</i> will perform all <i>Work</i> and provide all labour, equipment and material and do all things strictly as required by the <i>Contract Documents</i> . |
| | 1.2 | The <i>Contractor</i> will commence the <i>Work</i> in accordance with the <i>Notice to Proceed</i> . The <i>Contractor</i> will proceed with the <i>Work</i> diligently, will perform the <i>Work</i> generally in accordance with the construction schedules as required by the <i>Contract Documents</i> and will achieve <i>Substantial Performance</i> of the <i>Work</i> on or before <u>April 30, 2024</u> subject to the provisions of the <i>Contract Documents</i> for adjustments to the <i>Contract Time</i> . |
| | 1.3 | Time shall be of the essence of the <i>Contract</i> . |

Article 2 **CONTRACT**
DOCUMENTS

- 2.1 The “*Contract Documents*” consist of the documents listed or referred to in Schedule 1, entitled “Schedule of Contract Documents”, which is attached and forms a part of this Agreement, and includes any and all additional and amending documents issued in accordance with the provisions of the *Contract Documents*. All of the *Contract Documents* shall constitute the entire *Contract* between the *Owner* and the *Contractor*.
- 2.2 The *Contract* supersedes all prior negotiations, representations, or agreements, whether written or oral, and the *Contract* may be amended only in strict accordance with the provisions of the *Contract Documents*.

Article 3 **CONTRACT**
PRICE

- 3.1 The price for the *Work* (“*Contract Price*”) shall be the sum in Canadian dollars of the following
- 3.1.1 the product of the actual quantities of the items of *Work* listed in the *Schedule of Quantities and Prices* which are incorporated into or made necessary by the *Work* and the unit prices listed in the *Schedule of Quantities and Prices*; plus
- 3.1.2 all lump sums, if any, as listed in the *Schedule of Quantities and Prices*, for items relating to or incorporated into the *Work*; plus
- 3.1.3 any adjustments, including any payments owing on account of *Changes* and agreed to *Extra Work*, approved in accordance with the provisions of the *Contract Documents*.
- 3.2 The *Contract Price* shall be the entire compensation owing to the *Contractor* for the *Work* and this compensation shall cover and include all profit and all costs of supervision, labour, material, equipment, overhead, financing, and all other costs and expenses whatsoever incurred in performing the *Work*.

Article 4 **PAYMENT**

- 4.1 Subject to applicable legislation and the provisions of the *Contract Documents*, the *Owner* shall make payments to the *Contractor*.
- 4.2 If the *Owner* fails to make payments to the *Contractor* as they become due in accordance with the terms of the *Contract Documents* then interest calculated at 2% per annum over the prime commercial lending rate of the Royal Bank of Canada on such unpaid amounts shall also become due and payable until payment. Such interest shall be calculated and added to any unpaid amounts monthly.

Article 5 **RIGHTS AND**
REMEDIES

- 5.1 The duties and obligations imposed by the *Contract Documents* and the rights and remedies available thereunder shall be in addition to and not a limitation of any duties, obligations, rights, and remedies otherwise imposed or available by law.
- 5.2 Except as specifically set out in the *Contract Documents*, no action or failure to act by the *Owner*, *Contract Administrator* or *Contractor* shall

constitute a waiver of any of the parties' rights or duties afforded under the *Contract*, nor shall any such action or failure to act constitute an approval of or acquiescence in any breach under the *Contract*.

Article 6 NOTICES

- 6.1 Communications among the *Owner*, the *Contract Administrator* and the *Contractor*, including all written notices required by the *Contract Documents*, may be delivered by hand, or by fax, or by email, or by pre-paid registered mail to the addresses as set out below:

The **OWNER**:

District of Sooke
2205 Otter Point Road, Sooke, BC, V9Z 1J2

Email: jcarter@sooke.ca
Attention: Jeff Carter, Director of Operations

The **CONTRACTOR**:

Fax:

Email

Attention:

The **CONTRACT ADMINISTRATOR**:

McElhanney Ltd.
#500-3960 Quadra Street, Victoria, BC, V8X 4A3

Email: jirving@mcelhanney.com
Attention: Jon Irving, P.Eng.

- 6.2 A communication or notice that is addressed as above shall be considered to have been received
- 3.1.4 immediately upon delivery, if delivered by hand; or
 - 3.1.5 after 5 *Days* from date of posting if sent by registered mail
 - 3.1.6 n/a

- 6.3 The *Owner* or the *Contractor* may, at any time, change its address for notice by giving written notice to the other at the address then applicable. Similarly if the *Contract Administrator* changes its address for notice then the *Owner* will give or cause to be given written notice to the *Contractor*.
- 6.4 The sender of a notice by fax assumes all risk that the fax is received in hard copy.

Article 7 GENERAL

- 7.1 This *Contract* shall be construed according to the laws of British Columbia.
- 7.2 The *Contractor* shall not, without the express written consent of the *Owner*, assign this *Contract*, or any portion of this *Contract*.
- 7.3 The headings included in the *Contract Documents* are for convenience only and do not form part of this *Contract* and will not be used to interpret, define or limit the scope or intent of this *Contract* or any of the provisions of the *Contract Documents*.
- 7.4 A word in the *Contract Documents* in the singular includes the plural and, in each case, vice versa.
- 7.5 This agreement shall ensure to the benefit of and be binding upon the parties and their successors, executors, administrators and assigns.

IN WITNESS WHEREOF the parties hereto have executed this Agreement the day and year first written above.

CONTRACTOR:

(FULL LEGAL NAME OF CORPORATION, PARTNERSHIP OR INDIVIDUAL)

(AUTHORIZED SIGNATORY)

(AUTHORIZED SIGNATORY)

OWNER:

District Of Sooke

(FULL LEGAL NAME OF CORPORATION, PARTNERSHIP OR INDIVIDUAL)

(AUTHORIZED SIGNATORY)

(AUTHORIZED SIGNATORY)

(INCLUDE IN LIST ALL DOCUMENTS INCLUDING, IF ANY, SUPPLEMENTARY GENERAL CONDITIONS, SUPPLEMENTARY SPECIFICATIONS, SUPPLEMENTARY STANDARD DETAIL DRAWINGS.)

**Schedule 1 SCHEDULE OF
CONTRACT
DOCUMENTS**

The following is an exact and complete list of the *Contract Documents*, as referred to in Article 2.1 of the Agreement.

NOTE: The documents noted with “*” are contained in the “Master Municipal Construction Documents - General Conditions, Specifications and Standard Detail Drawings”, edition dated 2019. All sections of this publication are included in the *Contract Documents*.

- 8.1 Agreement, including all Schedules;
- 8.2 Supplementary General Conditions;
- 8.3 General Conditions*;
- 8.4 Supplementary Specifications;
- 8.5 District of Sooke Bylaw 404, Subdivision and Development Standards Bylaw;
- 8.6 Specifications*;
- 8.7 Supplementary Standard Detail Drawings;
- 8.8 Supplementary Standard Detail Drawings as per Bylaw 404;
- 8.9 Standard Detail Drawings*;
- 8.10 Executed Form of Tender, including all Appendices;
- 8.11 *Contract Drawings* listed in Schedule 2 to the Agreement – “List of *Contract Drawings*”;
- 8.12 Optional Works Explanatory Plan;
- 8.13 Geotechnical Investigation – “Proposed Church Road Phase 2, Church Road – Sooke, BC” prepared by Ryzuk Geotechnical, February 16, 2022;
- 8.14 “Environmental Management Plan for Throup Road and Church Road Roundabout Construction, adjacent to Throup Stream” prepared by Swell Environmental Consulting, May 18, 2023
- 8.15 “Charters Road and Church Road Constructions Traffic Management Strategy, District of Sooke” prepared by ISL Engineering Ltd, May 2023
- 8.16 Parts of 2182 Church Road Landscape Drawings prepared by Murdoch de Greeff Inc. – “Issued For Approval”, February 4, 2022
- 8.17 “Chance Find Protocol for Archaeological Sites” prepared by Stantec Consulting Ltd., 2023

- 8.18 BC Hydro Drawing 500-D07-03041 “Issued For Review”, April 17, 2023
- 8.19 Instructions to Tenderers - Part I;
- 8.20 Instructions to Tenderers - Part II*
- 8.22 The following Addenda:

(ADDENDA, IF ANY)

(COMPLETE LISTING OF ALL DRAWINGS, PLANS AND SKETCHES WHICH ARE TO FORM A PART OF THE CONTRACT,
OTHER THAN STANDARD DETAIL DRAWINGS AND SUPPLEMENTARY STANDARD DETAIL DRAWINGS.)

Schedule 2 LIST OF CONTRACT DRAWINGS

TITLE	DRAWING NO.	DATE	REVISION NO.	REVISION DATE
Cover		May 5, 2023	0	
General Notes & Legend	C001	May 5, 2023	0	
Church Road Roadworks – Sta. 9+500 to 9+665	C201	May 5, 2023	0	
Church Road Roadworks – Sta. 9+665 to 9+830	C202	May 5, 2023	0	
Throup Road Roadworks – Sta. 12+000 to 12+030 & 13+000 to 13+025	C203	May 5, 2023	0	
Church Street & Francis Gardens Roadworks – Sta. 12+000 to 12+030 & 13+000 to 13+025	C204	May 5, 2023	0	
Church & Throup Road – Storm Plan and Profiles	C205	May 5, 2023	0	
Church Road – Water & Storm Plan and Profiles	C206	May 5, 2023	0	
Ditch & Storm Connection – Plan, Profile and Details	C207	May 5, 2023	0	
Curb Plan and Profiles – Throup Road Northbound	C211	May 5, 2023	0	
Curb Plan and Profiles – Church Road Southbound	C212	May 5, 2023	0	
Curb Plan and Profiles – Throup Road Eastbound	C213	May 5, 2023	0	
Curb Plan and Profiles – Roundabout Button and Apron	C214	May 5, 2023	0	
Curb Plan and Profiles – Wadams Way and 2182 Access	C215	May 5, 2023	0	
Driveway Profiles	C221	May 5, 2023	0	

Details and Typical Sections	C301	May 5, 2023	0	
Road Cross Sections – Church Road Sta. 9+500.5 to 9+570	C401	May 5, 2023	0	
Road Cross Sections – Church Road Sta. 9+580 to 9+690	C402	May 5, 2023	0	
Road Cross Sections – Church Road Sta. 9+700 to 9+770	C403	May 5, 2023	0	
Road Cross Sections – Church Road Sta. 9+780 to 9+850	C404	May 5, 2023	0	
Road Cross Sections – Throup Road Sta. 11+020 to 11+100	C407	May 5, 2023	0	
Grading Plan	C501	May 5, 2023	0	
Geometrics and Signage	C601	May 5, 2023	0	
Landscape Plan	L101	May 19, 2023	0	
Landscape Plan	L102	May 19, 2023	0	
Landscape Details	L103	May 19, 2023	0	
Church Road – Lighting Layout	E1.00	May 12, 2023	6	
Church Road – Lighting Layout	E1.01	May 12, 2023	6	
Pole Details	E2.00	May 12, 2023	6	
Details & Specifications	E2.01	May 12, 2023	6	
Underground Duct and Structures For U/G Servicing Provisions (Civil Works Only) – 6588 Throup Road – Sooke	500-U07-08875	June 2, 2023	2	

SUPPLEMENTARY SPECIFICATIONS		
Add the following Supplementary Specifications (attached at end):		
SECTION	SUB SECTION	SUPPLEMENTARY SPECIFICATION
01 10 00SS Measurement and Payment	All	
Revise the following Master Municipal Specifications Platinum Edition:		
SECTION	SUB SECTION	SUPPLEMENTARY SPECIFICATION
01 52 01 Temporary Structures	1.6 Payment	<p>Add Clause 1.6.2: "Payment for mobilization and demobilization shall include all the Contractor costs of mobilization at the beginning of the project and the cost of demobilization at the end of the project.</p> <p>.1 Included in the mobilization are such items as bonding, insurance, permits, moving personnel, equipment and materials to the site, setting up temporary facilities and all preparation for performing the <i>Work</i>.</p> <p>.2 Included in demobilization are preparation and submission of record drawings, operation and maintenance manuals, removal of all personnel, equipment and materials and cleanup of the <i>Site</i> and the <i>Work</i>.</p> <p>.3 The lump sum price bid for this work shall be relative to the costs involved but shall not exceed ten percent of the <i>Tender Price</i>.</p> <p>.4 Payment shall be made as follows, as approved by the Contract Administrator:</p> <p>.1 60% of the lump sum bid will be included in the first progress payment certificate</p> <p>.2 40% of the lump sum bid will be included in the final progress payment certificate</p> <p>.5 The Contract Administrator may at his discretion authorize partial payment if mobilization or demobilization is not complete</p> <p>.6 The cost of other items specified under General Requirements shall be considered incidental to the work and separate payment will not be made for any other items in the General Requirements unless specifically noted in the <i>Schedule of Quantities and Prices</i>."</p>
01 55 00 Traffic Control, Vehicle Access and Parking	1.4 Traffic Control	<p>Add Clause 1.4.15:</p> <p>"Provide a detailed Traffic Management Plan (TMP) and drawings with dedicated traffic control and pedestrian delineation for safety of motorists, pedestrians and bicycle traffic for all locations where roadways are affected by construction activities. The TMP shall be sealed by a qualified professional engineer and will be approved by the Contract Administrator in advance of implementation. This plan is to be submitted to the Contract Administrator a minimum of 14 calendar days prior to the</p>

		<p>contractor's desired date of construction commencement. The plan shall be updated and modified as requested by the Contract Administrator, as the construction project proceeds and traffic management needs warrant. The TMP is to contain sufficient details to allow the Contract Administrator and Owner a clear understanding of how the Contractor will ensure the following performance specification will be achieved, at a minimum.</p> <ol style="list-style-type: none">1. TMP shall be prepared in accordance with the "Charters Road and Church Roads Constructions Traffic Management Strategy" prepared by ISL Engineering Ltd. to accommodate the adjacent road corridor construction project on Charters Road, planned for 2023 / 2024 construction.2. TMP shall be in prepared in accordance with the 2020 BC Ministry of Transportation and Infrastructure guidelines specified in the Traffic Management Guidelines for Work on Roadways Manual, and the 2016 Standard Specifications for Highway Construction. Table of Contents to include the following:<ol style="list-style-type: none">2.1. General Information2.2. Operations and Signage2.3. Users and Access2.4. Traffic Control Drawings2.5. Public Information Plan2.6. Incident Management Plan2.7. Implementation Plan3. Partial closure of existing travel lanes to a minimum of single lane alternating traffic to facilitate construction of the Works may be requested4. Diverted travel lanes must be on paved or granular base surfaces. Travel surface will allow for vehicles to move through the construction zone at an intended speed of 20 km/h.5. Minimize stopping traffic in the travel lane. No dumping or off loading of materials shall be permitted in the travel lane. Stoppages are permitted for vehicle access to and egress from the construction zone or for construction vehicles crossing the travel lane. No delays for full lane closure of more than 5 minutes. Traffic cannot queue into the Sooke Road R/W at any time.6. Provide a plan of all off site and on site signage and traffic control devices for review and acceptance by the Contract Administrator and the Owner. Update the plan as requested whenever signage or traffic control device locations are changed.7. Provide access for garbage collection and recycling pick-up programs and mail delivery to all residents and businesses. Provide communication to and coordination with all service providers as necessary to ensure access as required.8. Provide for the BC Transit bus routes. Communicate to and coordinate with BC Transit as necessary regarding temporary bus stop locations, transit through the work zone and any other issues that may arise that require discussion and coordination.
--	--	---

		<p>9. Work shall be in accordance with District Of Sooke Noise Bylaws.</p> <p>10. At the discretion of the Contract Administrator, the Contractor may be requested to modify the TMP to accommodate any irregularities or excessive congestion of traffic flow. Maximum total delays of up to 5 minutes are permitted</p> <p>11. Maintain at least one access to all properties, at all times unless otherwise authorized by the Contract Administrator or unless the work is directly in front of a residential driveway. Where closures of residential driveways are required, provide a hand delivered letter a minimum of 72 hours prior to construction to impacted property owner(s). Driveways shall be closed for 72 hours for concrete curing. Daily access shall be provided for trenching where possible using steel plates.</p> <p>12. Facilitate priority access through the work zone for fire trucks and all other emergency vehicles when they are operating with emergency lights and sirens active and where possible otherwise.</p> <p>13. Where sidewalks are closed, provide adequate signage regarding pedestrian detour including signage at closest pedestrian crossing at each side of the closed section. Where work directly impacts sidewalk accessibility, “fixed in place” ramps with a tactile surface are to be provided at either end of the work area allowing pedestrians to safely negotiate the grade change between the roadway surface and drop ramps, curbs, and boulevards. Ramps must be of solid / sound construction, a minimum of 1.5m wide, less than 8% grade, and fixed in place with a traction surface and have a raised barrier edge a minimum of 35mm high.</p> <p>14. Provide plan for on site or off site storage of materials and equipment, location of site trailers and all other storage facilities (e.g. shipping containers). Use of the road right-of way or other public lands will require a Permit to Occupy a Road Allowance.</p>
01 57 01 Environmental Protection	1.1 Section 10 57 01 Includes	Add Clause 1.1.5: “Qualified Environmental Professional”
	1.2 Temporary Erosion and Sediment Controls	Add Clause 1.2.1.4: “All catch basin, silt trap, and lawn basin inlet castings that may receive runoff from the work area to be covered with filter cloth. Ensure no silt or sediment enters the storm drainage system while removing the silt cloth once construction is complete”
	1.4 Environmental Protection	Add Clause 1.4.4: “Disposal of Waste: <ol style="list-style-type: none"> 1. Do not bury rubbish and waste materials on site. 2. Do not dispose of waste or volatile materials such as mineral spirits, oil or paint thinner into waterways, storm or sanitary sewers. 3. Dispose of waste materials off property, in accordance with applicable provincial and/or federal regulations. 4. Removal and disposal of Asbestos Cement pipe shall follow current WCB requirements.”

		<p>Add Clause 1.4.5: “Concrete and Asphalt Cutting and Placing:</p> <ol style="list-style-type: none"> 1. Control and pick up all wet or dry residue from saw cutting, coring, grinding and milling operations by means of a vacuum device or street sweeper. Under no circumstances is any dust, debris or run-off to migrate into waterways, storm or sanitary sewers. 2. Minimize the volume of wastewater produced by cutting tools by recycling and reusing wastewater whenever possible. 3. Do not allow cement washout into the streets, driveways, gutters, storm drains, ditches or water courses. 4. Set up and operate portable mixers on tarps or heavy drop cloths to contain spillage. 5. When breaking up and milling pavement, remove broken pavement and sweep area clean.”
01 57 01 Environmental Protection	1.4 Environmental Protection	<p>Add Clause 1.4.4: “Archaeological Sites: Contractor to comply with “Chance Find Protocol for Archaeological Sites” report prepared by Stantec Consulting Ltd., 2023, amended to the Contract documents, for all ground disturbance activities.”</p>
	1.6 Measurement and Payment	<p>Add Clause 1.6.2: “Environmental Protection Plan to be prepared in accordance with “Environmental Management Plan for Throup Road and Church Road Roundabout Construction, Adjacent to Throup Stream” prepared by Swell Environmental Consulting. Payment for Environmental Protection Plan shall be lump sum and includes all work to prepare, deliver and enact an Environmental Management Plan prepared by a registered qualified environmental professional (QEP) that contains the following components: tree protection plan; sensitive ecosystem management plan; sediment and erosion control plan; invasive species management plan; waste disposal; storage areas and laydown area management plan; equipment idling control plan; hazardous material control and spill response plan.”</p>
01 58 01 Project Identification	1.2 Temporary Project Sign	<p>Clause 1.2.1.1 delete: “Provide and erect, within 3 weeks of signing Contract, a project sign in a location designated by the Contract Administrator.” Replace with: “Erect, within 2 weeks of being provided signs, two project signs in locations designated by the Contract Administrator.”</p> <p>Delete Clauses 1.2.1.2 and 1.2.1.3</p>
03 40 01 Pre-cast Concrete	1.4 Measurement and Payment	<p>Clause 1.4.2 delete: “concrete footing” Replace with: “finished ground”. Add “Shop drawings to be provided for approval.”</p>
26 56 01 Roadway Lighting	1.9 Measurement and Payment	<p>Add Clause 1.9.4: “All Streetlights, poles, bases, conduit, wiring, junction boxes and pedestrian flashers to be installed as a complete, functioning system as per AES Drawings, paid at the unit rates shown in the Schedule of Quantities and Prices. Payment to include all labour, equipment and materials required to undertake the installation.”</p>

31 24 13 Roadway Excavation, Embankment and Compaction	1.8 Measurement and Payment	Add Clause 1.8.14: "Payment for common excavation (neat line area to design subgrade) includes excavation and offsite disposal to design subgrade, including asphalt and concrete removal. Payment includes removal of all existing site fixtures, retaining walls, signs, fencing, stumps, pipes, culverts, conduits and underground infrastructure as shown on the Drawings. Measurement shall be based on the surface area neat lines required and shown on the Drawings and surveyed volume calculations as specified in Supplemental Specifications 01 10 00SS."
32 12 16 Hot Mix Asphalt Concrete Paving	1.5 Measurement and Payment	Clause 1.5.1 change: "based on weigh tickets provided to Contract Administrator as loads are delivered" to "based on area for each thickness specified in the Schedule of Quantities and Prices". Clause 1.5.3 change: "based on weigh tickets provided to Contract Administrator as loads are delivered" to "based on area for each thickness specified in the Schedule of Quantities and Prices".
32 17 23 Painted Pavement Markings	1.5 Measurement and Payment	Add Clause 1.5.5: "Supply and installation of traffic control signs and delineators shall be paid at the unit price shown on the Schedule of Quantities and Prices and shall include all labour, equipment and materials required to complete the installation as shown on the Contract Drawings."
		Add Clause 1.5.6: "Relocation of existing traffic control signs shall be paid at the unit price shown on the Schedule of Quantities and Prices and shall include all labour, equipment and materials required to complete the removal and re-installation as shown on the Contract Drawings. The post and signs shall be salvaged for re-installation and new concrete bases installed. Sign relocations required for construction that are not shown in the Contract Drawings will be considered incidental to the work."
32 31 13 Chain Link Fences and Gates	1.5 Measurement and Payment	Clause 1.5.4 delete: "Payment for handrails and bicycle baffles includes all materials, work and incidentals shown on Standard Detail Drawings C11 and C14 as separate items for each type of installation. Measurement will be made horizontally along surface of the ground for length of handrail or bicycle baffle installed." Replace with: "Payment for handrails includes all materials, work and incidentals shown on Contract drawings. Measurement will be made horizontally along surface of the ground for length of handrail installed."
32 91 21 Topsoil and Finish Grading	1.4 Measurement and Payment	Clause 1.4.1 delete: "Payment for growing medium will be by actual area provided and payment for imported topsoil will be based on loose truck box volume." Replace with: "Payment for growing medium and imported topsoil will be by actual area provided at depth specified in contract drawings and Schedule of Quantities and Prices."
33 44 01 Manholes and	1.5 Measurement	Clause 1.5.1.1 delete: "except riser". Replace with: "including riser".

Catch basins	and Payment	Delete Clause 1.5.1.2: Clause 1.5.3 delete: "existing catchbasins,". Replace with: "existing manholes, catchbasins,".
32 93 01 Planting of Trees, Shrubs & Ground Cover	1.9 Measurement and Payment	Add clause 1.9.3: "Payment for Irrigation System shall be paid at the unit price shown on the Schedule of Quantities and Prices and shall include all labour, equipment, and materials required to design, supply and install a complete functioning irrigation system to support sod, trees and shrubs in specified areas, as shown on the Contract Drawings. Contractor is to provide Shop Drawings for approval prior to construction." Add Clause 1.9.4: "Native riparian plantings to be salvaged or supplied in 1-gallon pots, planted in a grid at 1m intervals, centre-to-centre, in an arrangement directed by the Owner's QEP. Plantings to include mix of willow, red osier dogwood, slough sedge and soft-stemmed bullrush complete with mulch."
33 11 01 Waterworks	1.8 Measurement and Payment	Clause 1.8.12 delete: "tie-ins to existing mains" Replace with "tie-ins to existing mains, service box adjustments/relocations, and watermain lowering" delete: "tie-in work" Replace with "work, including traffic control,"

Chance Find Protocol for Archaeological Sites



Prepared by:
Stantec Consulting Ltd.
11 – 2042 Mills Road, Sidney,
British Columbia, V8L 5X4

Table of Contents

1.0	INTRODUCTION	1
2.0	WHAT IS AN ARCHAEOLOGICAL SITE?.....	1
3.0	TYPES OF ARCHAEOLOGICAL SITES POTENTIALLY PRESENT IN THE PROJECT AREA.....	2
3.1	SHELL MIDDENS	2
3.2	HUMAN REMAINS AND BURIAL FEATURES.....	2
3.3	LITHIC (STONE) SCATTERS.....	3
3.4	WET SITES	6
4.0	IF YOU ENCOUNTER ARCHAEOLOGICAL RESOURCES.....	7

LIST OF FIGURES

Figure 1	Profile View of Shell Midden Exposure	2
Figure 2	Burial Cairn.....	Error! Bookmark not defined.
Figure 3	Lithic Scatter	4
Figure 4	Lithic Debitage	4
Figure 5	Projectile Points	5
Figure 6	Adzes	5
Figure 7	Hand Maul	5
Figure 8	Basketry	6
Figure 9	Wood Artifacts.....	6
Figure 10	Cordage	7

CHANCE FIND PROTOCOL FOR ARCHAEOLOGICAL SITES

Introduction
2023

1.0 INTRODUCTION

A Chance Find Protocol provides those involved in ground disturbing activities, including activities in foreshore, intertidal and subtidal areas, with a framework for identifying archaeological sites and assists in minimizing unforeseen impacts to archaeological sites. The protocol provides basic descriptions of archaeological materials commonly found in the region and the types of sites most likely to be encountered during project work. All people involved in ground disturbing activities should be familiar with the typical types of archaeological sites present in the region. In the event that a potential archaeological site is encountered, you are advised to stop all work in the vicinity of the find and contact Stantec Consulting Ltd. or the Archaeology Branch so that the nature and integrity of the find can be accurately assessed. Contact information is provided at the end of the Chance Find Protocol.

In British Columbia, archaeological sites are legally protected by provincial legislation called the *Heritage Conservation Act* (HCA). The provisions of the HCA apply to archaeological sites located on both public and private land. The HCA automatically protects archaeological sites if they:

1. Pre-date 1846
2. Are of unknown age but may pre-date AD 1846
3. Contain human remains or aboriginal rock art of historical or archaeological value (regardless of age)
4. Consist of shipwrecks or airplane wrecks more than two years in age

In accordance with the HCA (section 13[2]), it is unlawful to destroy, excavate or alter an archaeological site without a permit issued by the Minister or designate.

2.0 WHAT IS AN ARCHAEOLOGICAL SITE?

An archaeological site is a location where there is physical evidence of past human activity. Archaeological sites can include things such as stone tools, remains of ancient houses and campsites, shell middens, burials, and wet sites. The type and nature of archaeological sites vary widely across British Columbia. The following section provides examples of those most likely encountered in the project area.

CHANCE FIND PROTOCOL FOR ARCHAEOLOGICAL SITES

Types of Archaeological Sites Potentially Present in the Project Area
2023

3.0 TYPES OF ARCHAEOLOGICAL SITES POTENTIALLY PRESENT IN THE PROJECT AREA

3.1 SHELL MIDDENS

Shell middens are typified by the presence of shellfish (clam, mussel, scallop, etc.) shells discarded after consumption, but they also commonly contain charcoal, ash and burnt sediments, fire-broken rocks, stone, bone and antler artifacts, and human remains (Figure 1). Shell midden deposits vary from small pockets to very large sites many hundreds of metres long. They are typically, though not always, found along or near the shoreline. Shell midden sites often represent villages or seasonal encampments where shellfish were consumed in quantity. Shell middens are unique inasmuch as the shells neutralize soil acidity, which can promote preservation of archaeological materials, such as bone and antler, that usually degrade quickly.



Figure 1 **Profile View of Shell Midden Exposure**

3.2 HUMAN REMAINS AND BURIAL FEATURES

Human remains can be represented by as little as a single tooth to a complete skeleton, and can be from individuals of any age (i.e., infants, juveniles, adults). All bones and teeth that are reasonably similar to those of a human should be considered to be human remains until confirmed otherwise. Respect is paramount when dealing with human remains. Mortuary

CHANCE FIND PROTOCOL FOR ARCHAEOLOGICAL SITES

Types of Archaeological Sites Potentially Present in the Project Area
2023

features represent deliberate depositional events and can be identified by a number of different practices some of which include barrows/mounds, burial cairns (Figure 2), or interment within shell middens.



Figure 2 **Burial Cairn**

3.3 LITHIC (STONE) SCATTERS

Lithic scatters are sites comprised of stone tools, stone tool fragments, and debitage—the flakes of stone that are produced when stone tools are manufactured. These stone artifacts may be found scattered across the ground surface or may have been buried since their original deposition. These sites may vary from a single, isolated artifact—a stone arrowhead, knife, adze, or hand maul, for example—to extensive scatters of hundreds of tools, tool fragments and pieces of debitage (Figure 3 to 7).

CHANCE FIND PROTOCOL FOR ARCHAEOLOGICAL SITES

Types of Archaeological Sites Potentially Present in the Project Area
2023



Figure 3 **Lithic Scatter**



Figure 4 **Lithic Debitage**

CHANCE FIND PROTOCOL FOR ARCHAEOLOGICAL SITES

Types of Archaeological Sites Potentially Present in the Project Area
2023



Figure 5 **Projectile Points**



Figure 6 **Adzes**



Figure 7 **Hand Maul**

CHANCE FIND PROTOCOL FOR ARCHAEOLOGICAL SITES

Types of Archaeological Sites Potentially Present in the Project Area
2023

3.4 WET SITES

Wet sites are archaeological sites with exceptional preservation due to special conditions found in waterlogged settings. In this setting, rare organic artifacts such as basketry, cordage, and wood artifacts can be preserved in the unique anaerobic (oxygen-less) environments (Figure 8 to Figure).

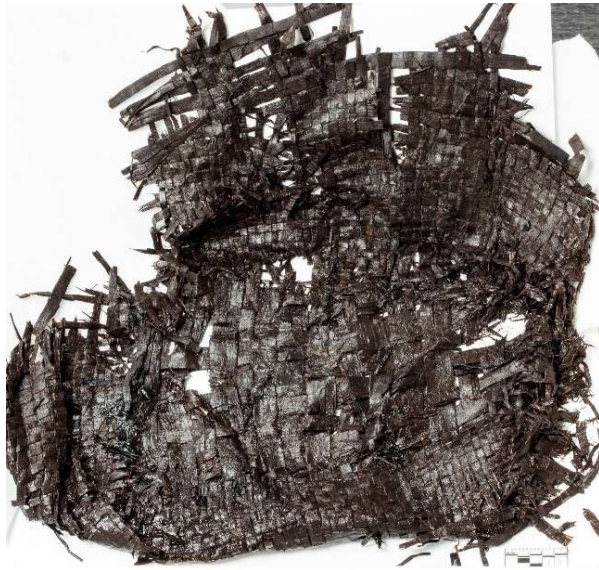


Figure 8 **Basketry**



Figure 9 **Wood Artifacts**

CHANCE FIND PROTOCOL FOR ARCHAEOLOGICAL SITES

If You Encounter Archaeological Resources
2023



Figure 10 **Cordage**

4.0 IF YOU ENCOUNTER ARCHAEOLOGICAL RESOURCES

If you believe you have encountered archaeological resources during the project the following steps should be followed.

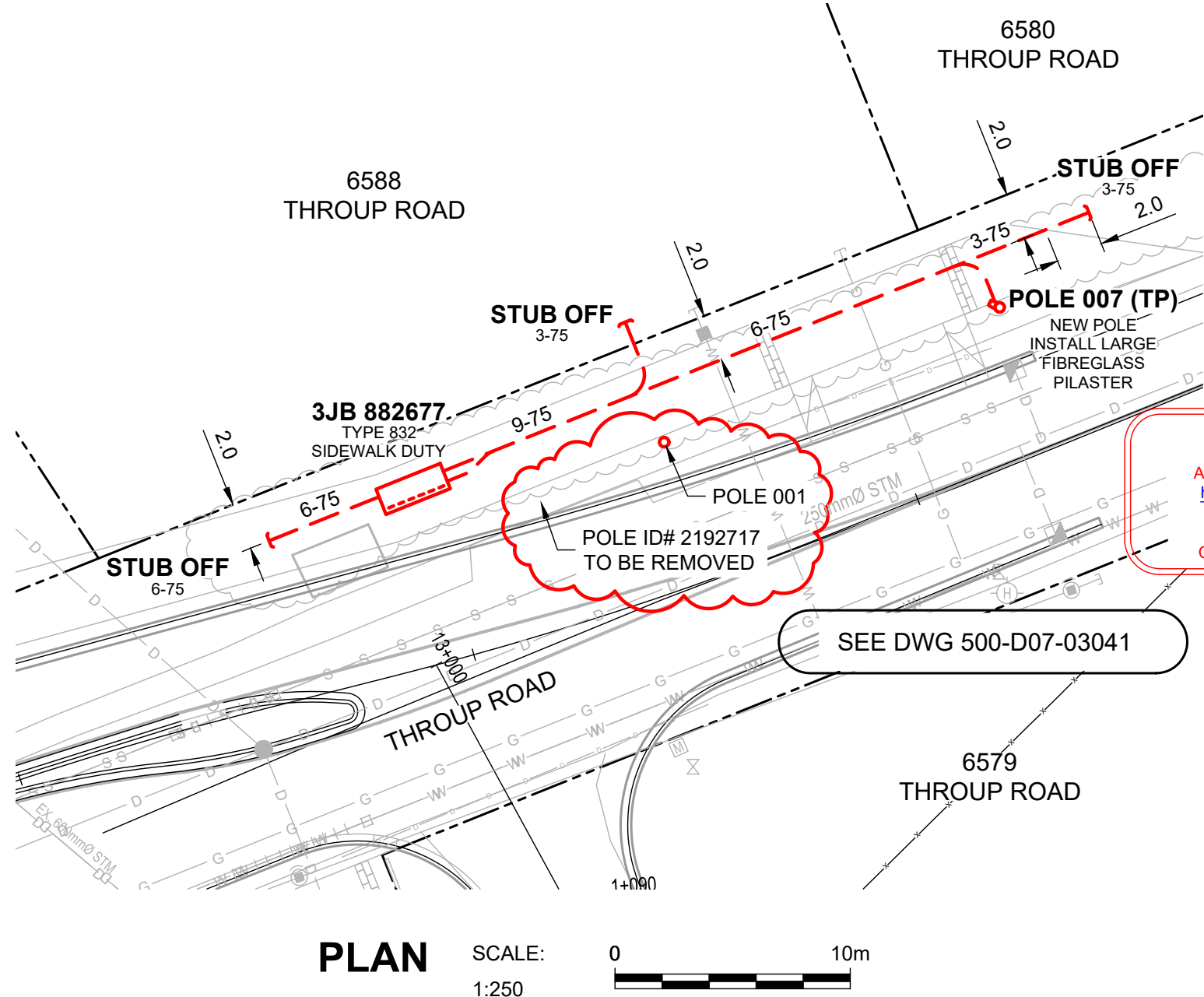
- Stop work and notify your supervisor immediately
- If possible human remains are encountered, cease all forms of ground disturbing activities in the vicinity so that an archaeologist can confirm the nature of the remains. If the remains are determined to be human, the archaeologist will contact First Nations and the Archaeology Branch for direction. If an established human remains protocol has not yet been developed, mitigation of burial features will not proceed until the designated individuals from the First Nations have been informed and a decision on how to proceed has been reached. All remains will be protected during the notification process.
- If you have found surface or buried archaeological deposits, cease all forms of ground disturbance in the vicinity of the find and leave all possible archaeological materials in place.
- Briefly note the type of archaeological materials you think you've encountered, and their location, including, if possible, the depth below surface of the find.
- Photograph the exposed materials, preferably with a scale (a yellow plastic field binder will suffice; a Sharpie or a loonie will do in a pinch).
- Notify the archaeology team at Stantec Consulting Ltd. by telephone at (250) 361-8639 or by email at jonny.hall@stantec.com, or the Archaeology Branch by telephone at 250-953-3334.

CHANCE FIND PROTOCOL FOR ARCHAEOLOGICAL SITES

If You Encounter Archaeological Resources
2023

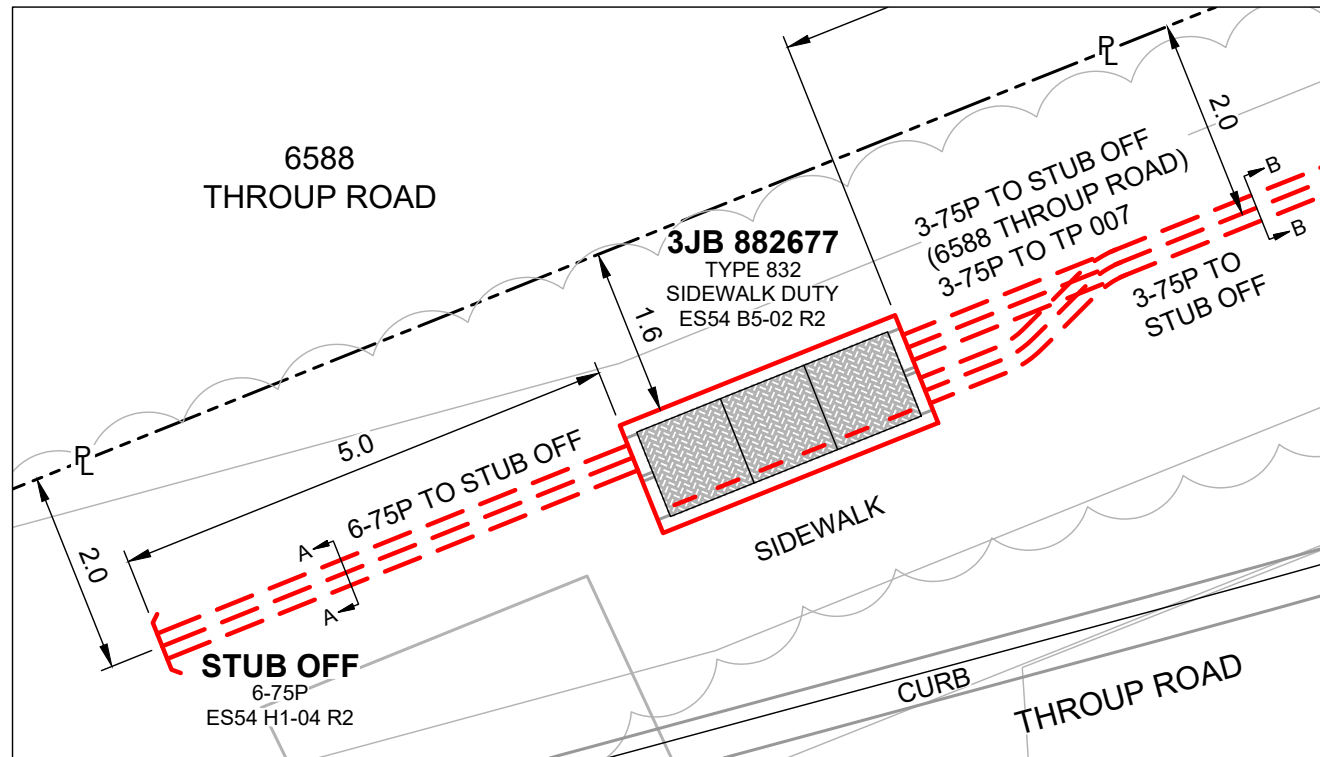
Note that work in the vicinity of the possible archaeological site cannot recommence until an archaeologist has confirmed that all appropriate measures have been undertaken and it is appropriate to do so. There may be requirements for HCA permits before work can continue.

G:\DD\5_MCLAREN_CHECKOUT\Da Costa Live\WORK IN PROGRESS\500-U07-08875_5A6.1.dwg
Drawing Unit = Metric (6)
DA COSTA BRANDAO, LIVIA
09/2023 12:58 PM

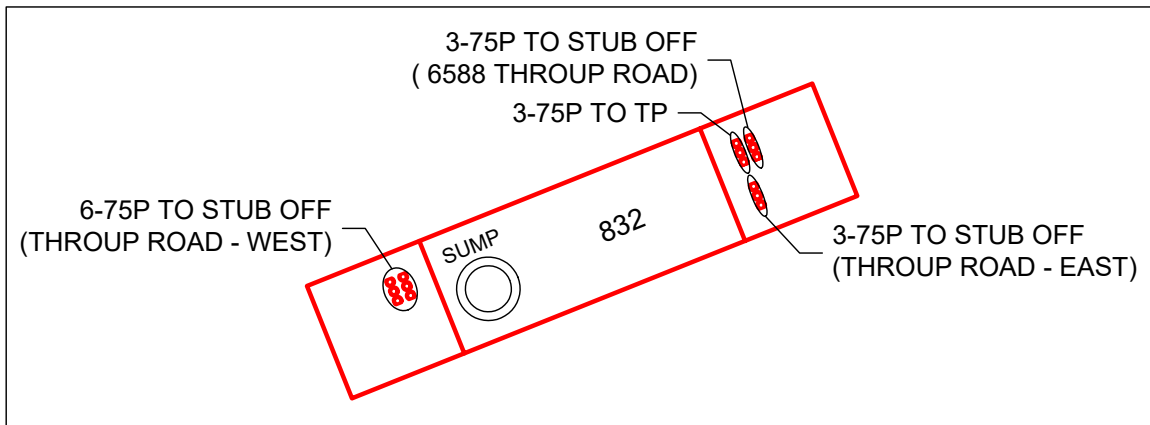


**** CAUTION ****
ADDITIONAL POLE STABILITY MAY BE REQUIRED
<https://www.bchydro.com/accounts-billing/electrical-connections/distribution-standards.html>
ESS5 E3-04 GUIDE FOR
CIVIL EXCAVATION NEAR DISTRIBUTION POLES

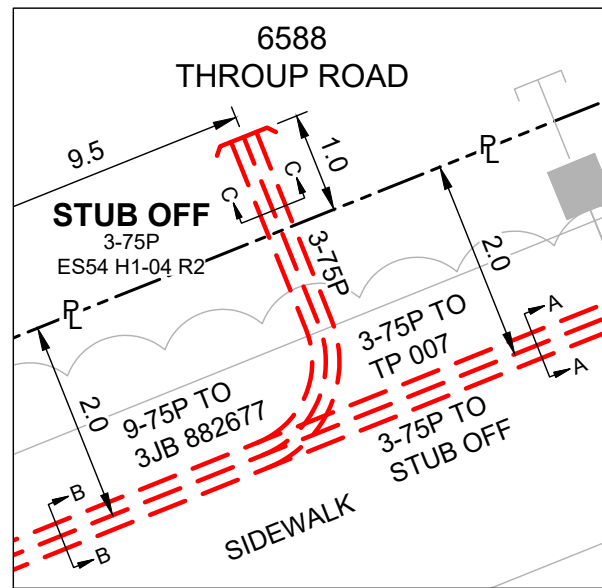
3JB 882677 / STUB OFF DETAILS



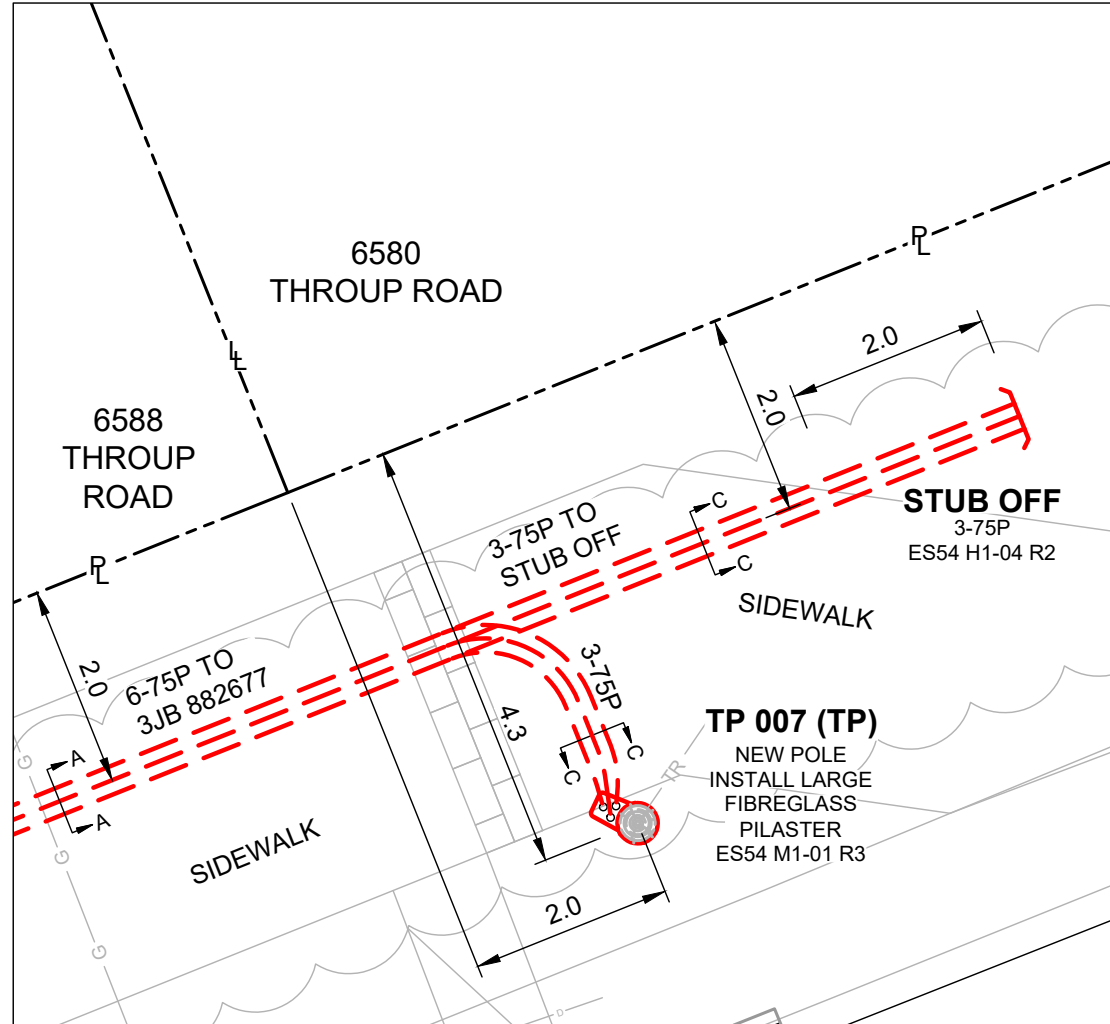
3JB 882677 DUCT WINDOW DETAIL



STUB OFF DETAIL

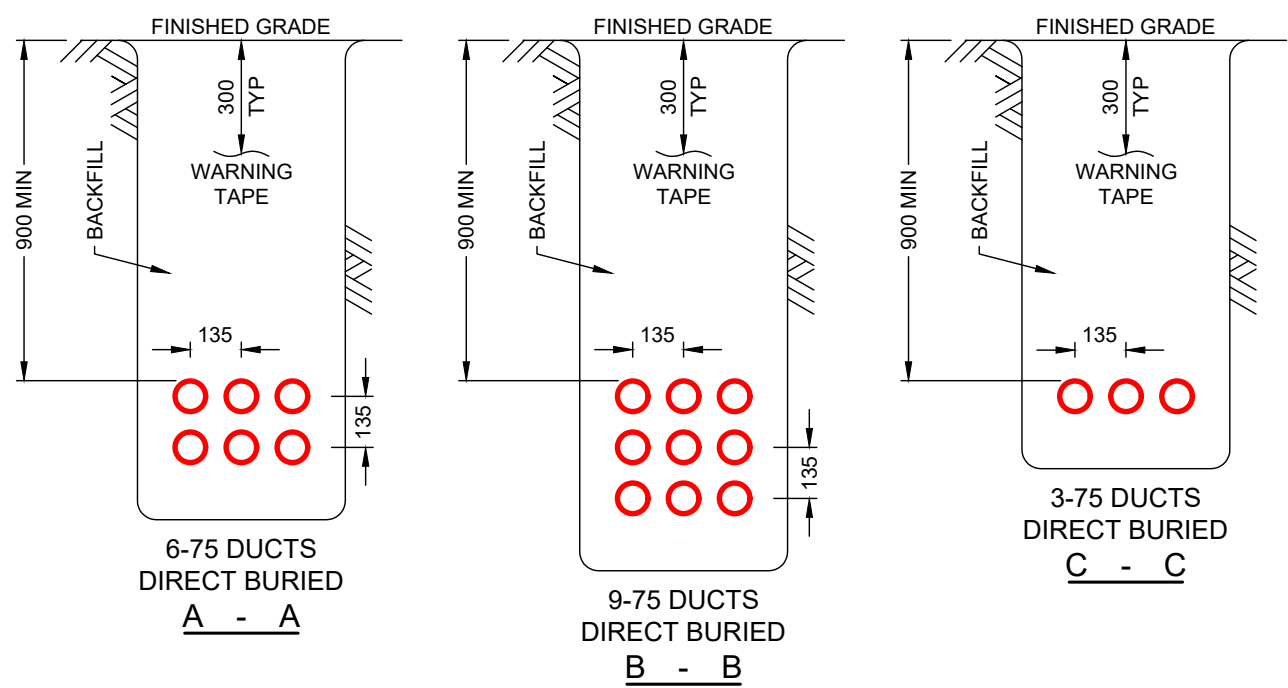


TP 007 / STUB OFF DETAILS



**** CAUTION ****
ADDITIONAL POLE STABILITY MAY BE REQUIRED
<https://www.bchydro.com/accounts-billing/electrical-connections/distribution-standards.html>
ESS5 E3-04 GUIDE FOR
CIVIL EXCAVATION NEAR DISTRIBUTION POLES

DETAILS
N.T.S.



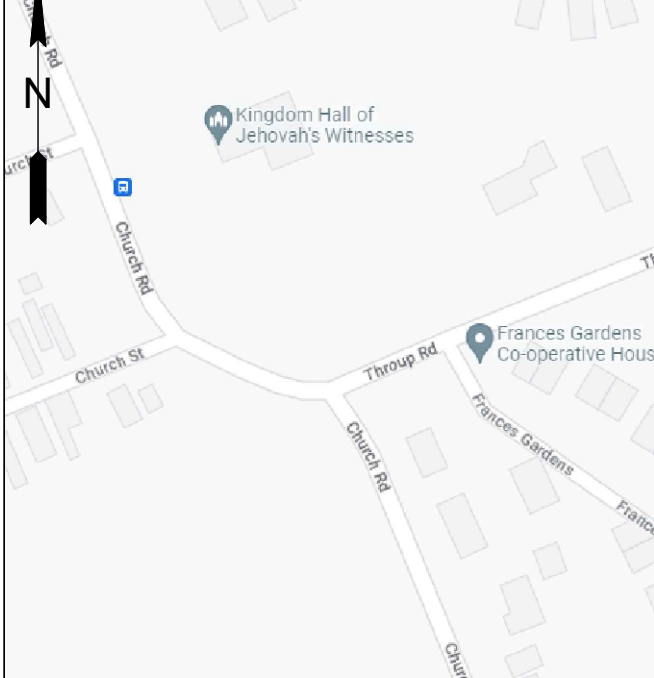
TRENCH DETAILS
N.T.S.

**ISSUED FOR
CONSTRUCTION**

DISCLAIMER

THIS DRAWING IS THE PROPERTY OF BC HYDRO AND SHALL NOT BE USED, REUSED OR REPRODUCED WITHOUT THE CONSENT OF BC HYDRO. BC HYDRO WILL NOT BE HELD RESPONSIBLE FOR THE IMPROPER OR UNAUTHORIZED USE OF THIS DRAWING AND WILL NOT BE LIABLE FOR ANY LOSSES OR OTHER CONSEQUENCES RESULTING FROM THE USE OR RELIANCE UPON, OR ANY CHANGES MADE TO, THIS DRAWING. PLEASE NOTE THAT BC HYDRO DOES NOT ASSUME RESPONSIBILITY FOR THE ACCURACY OR COMPLETENESS OF THE CONTENTS, WHETHER SHOWN OR OMITTED FROM THIS DRAWING.

LAT:48.3839273 LONG:-123.7214830



WORK LOCATION N.T.S.

BC ONE CALL

CALL BEFORE YOU DIG
1-800-474-6886
CALL AT LEAST 3 FULL
WORKING DAYS BEFORE
YOU PLAN TO DIG



CIVIL SPEC. 1323 NOTES:

- BC HYDRO UNDERGROUND CIVIL INSPECTOR MUST BE NOTIFIED **48 HOURS** PRIOR TO CONSTRUCTION.
- ALL WORK TO BE PERFORMED IN ACCORDANCE WITH CLASS OF WORK SPECIFICATION 1323 AND BC HYDRO UNDERGROUND DISTRIBUTION ENGINEERING STANDARDS SERIES ESS3 AND ESS4.
- ANY CHANGES NEED TO HAVE PRIOR APPROVAL OF BC HYDRO CIVIL INSPECTOR.
- UNLESS OTHERWISE NOTED ON TRENCH DETAILS OR REQUIRED PER ES 54 H0-02.02, ALL CONDUIT INSTALLATION FOR BC HYDRO ON PUBLIC OR PRIVATE PROPERTY SHOULD HAVE MIN. 0.9m COVER AND ANY FACTORY BEND MUST HAVE A MIN. RADIUS OF 0.9m.
- ALL UTILITIES (EXCEPT TELUS) MUST MAINTAIN A 0.9m HORIZONTAL AND 0.3m VERTICAL SEPARATION FROM BC HYDRO DUCT UNLESS DIRECTED OTHERWISE BY BC HYDRO CIVIL INSPECTOR.
- OTHER UTILITIES SHOWN ON THE CIVIL DRAWING ARE FOR REFERENCE ONLY. PROVE LOCATION OF ALL UTILITIES IN THE WORK AREA BEFORE CONSTRUCTION. FOR CURRENT INFORMATION CONTACT BC ONE CALL.
- ALL OFFSETS INDICATE CENTERLINE OF BC HYDRO PLANT.
- METRES EXPRESSED IN DECIMALS, MILLIMETRES IN WHOLE NUMBERS.
- TRANSFORMER MUST BE A MIN. OF 1.5m BEHIND NON-MOUNTABLE CURB OR PROTECTED. FINAL NUMBER AND LOCATION OF PROTECTION POSTS TO BE DETERMINED IN THE FIELD BY BC HYDRO CIVIL INSPECTOR.
- FOR TRANSFORMER PAD COUNTERPOISE CLEARANCES TO OTHER UTILITIES AND UNDERGROUND CONDUCTIVE SURFACES, SEE ESS4.
- MIN. OFFSET FOR BC HYDRO DUCTS, IN JOINT TRENCH, FROM PROPERTY LINE IS 1.2m, UNLESS OTHERWISE NOTED.
- STUB SERVICE DUCT 1.0m FROM PROPERTY CORNER AND 1.0m INTO THE LOT UNLESS OTHERWISE NOTED.
- IT IS THE RESPONSIBILITY OF THE RESOURCE THAT IS PERFORMING THE INSTALLATION OF THE PROPOSED CIVIL WORKS TO PROVIDE BC HYDRO WITH A RECORD DRAWING(S) OF THE CONSTRUCTION. THE RECORD DRAWING(S) MUST BE RECEIVED AND ACCEPTED BEFORE ELECTRICAL WORK WILL COMMENCE.

CUSTOM NOTES HERE IF REQUIRED

ENGINEERING NOTES

UNLESS NOTED OTHERWISE, ENGINEERING CONTENT ON THIS DRAWING HAS BEEN PRODUCED FOLLOWING A DOCUMENTED BC HYDRO QUALITY MANAGEMENT PROCESS USING BC HYDRO ENGINEERING STANDARDS AUTHENTICATED BY PROFESSIONALS OF RECORD UNDER PERMIT TO PRACTICE NUMBER 1002449

CIVIL PLAN LEGEND:

BC HYDRO RESPONSIBILITY	CUSTOMER RESPONSIBILITY
NEW DUCT	EXISTING DUCT
FIELD COMPLETED DUCT	
SERVICE BOX	SERVICE BOX
TERMINAL POLE	TERMINAL POLE
LOW PROFILE TRANSFORMER (LPT-PYRAMID PAD)	LOW PROFILE TRANSFORMER (LPT-PYRAMID PAD)
LOW PROFILE TRANSFORMER (LPT)	LOW PROFILE TRANSFORMER (LPT)
PAD MOUNT TRANSFORMER (PMT)	PAD MOUNT TRANSFORMER (PMT)
30 & 10 JUNCTION & PULL BOXES (332, 632, 832 & 1232)	30 & 10 JUNCTION & PULL BOXES (332, 632, 832 & 1232)
PRECAST MANHOLE	PRECAST MANHOLE
VISTA SWITCH SUBMERSIBLE (VSWB)	VISTA SWITCH SUBMERSIBLE (VSWB)
VISTA SWITCH ABOVE GROUND (VSWA)	VISTA SWITCH ABOVE GROUND (VSWA)
REFER TO ESS3 AND ESS4 UNDERGROUND STANDARDS	

BC Hydro

**SOUTH VANCOUVER ISLAND
VICTORIA POWER DISTRICT
UNDERGROUND DUCT AND STRUCTURES FOR
U/G SERVICING PROVISIONS (CIVIL WORKS ONLY)
6588 THROUP ROAD, SOOKE
SHEET 1 OF 1**

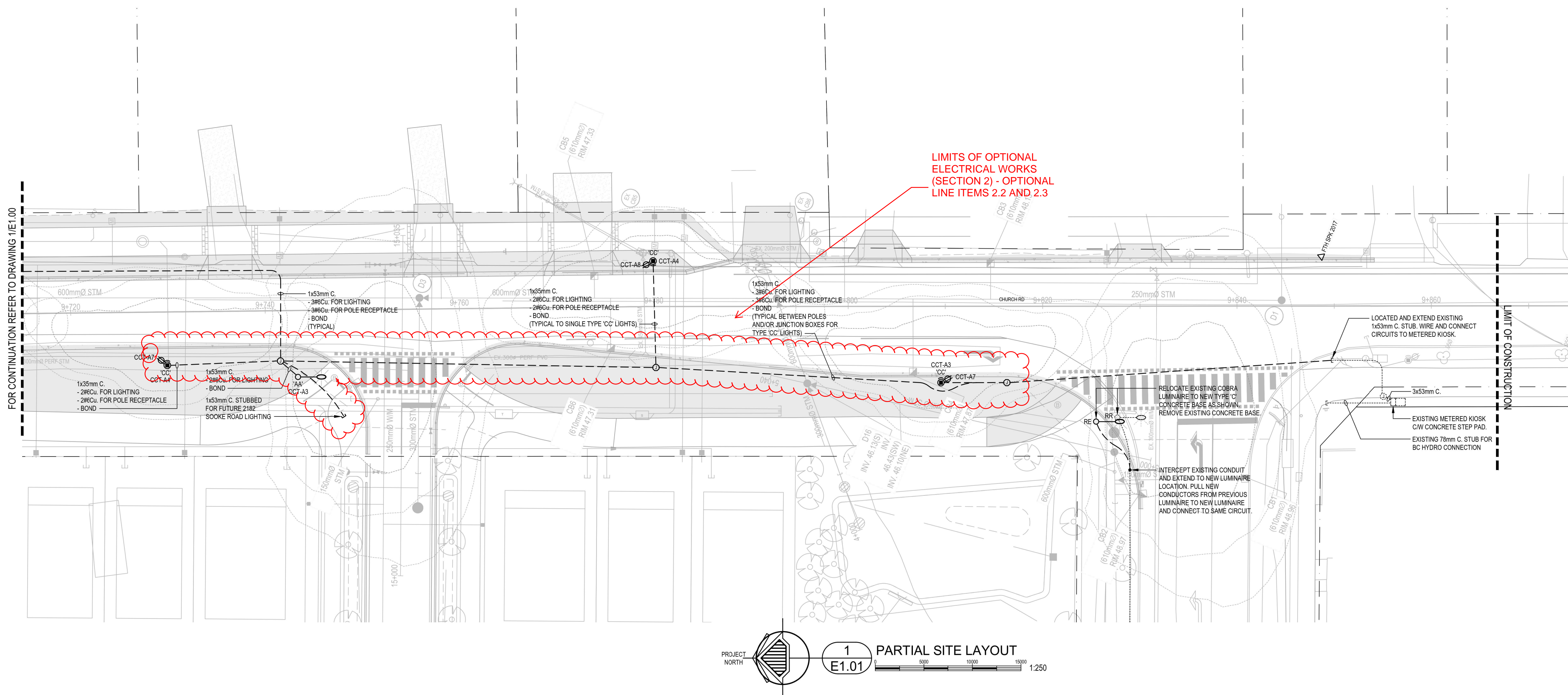
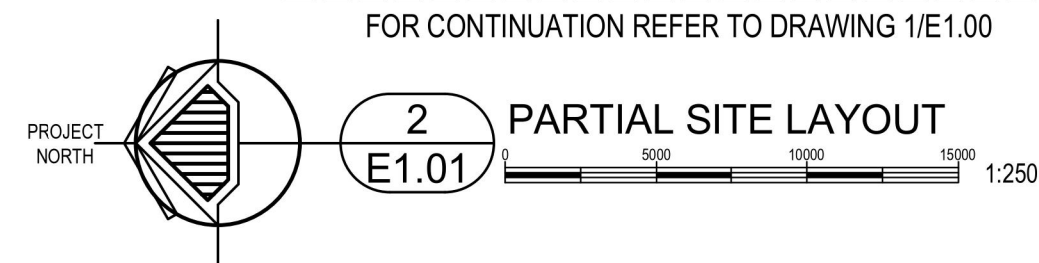
DESIGN NUMBER	0004901715	DSGN	A.BYRNES
WORK ORDER NUMBER	02308847	INDEP CHK	
CSA S250 ACCURACY NAD 83 - 10UTM		DFTG CHK	L.COSTA
BASE ACCURACY LEVEL: 4 +/- 1000 mm		INSP	
ASB ACCURACY LEVEL: 4 +/- 1000 mm		REV	
		ACPT	

DATE	2023JUN02	DIST		DRAWING NUMBER	500-U07-08875	REPORT NUMBER		FIG NO	SIZE	REV
									D	2

NOT TO BE REPRODUCED WITHOUT THE PERMISSION OF BC HYDRO

2	DESIGN: 0004901715 - ISSUED FOR CONSTRUCTION
1	DESIGN: 0004901715 - NEW DRAWING
NO	DRAWING NUMBER
NO	DRAWING TITLE
NO	REMARKS
NO	REVISIONS

1	500-D07-03041	POLE RELOCATIONS FOR ROUNDABOUT - CHURCH ROAD AT THROUP ROAD
NO	DRAWING NUMBER	DRAWING TITLE
NO	REFERENCE DRAWINGS	

[illegible]

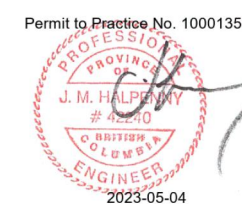
THIS DRAWING AND DESIGN IS THE PROPERTY OF AES ENGINEERING AND SHALL NOT BE USED, REUSED OR REPRODUCED WITHOUT THE CONSENT OF AES ENGINEERING. AES ENGINEERING WILL NOT BE HELD RESPONSIBLE FOR THE IMPROPER OR UNAUTHORIZED USE OF THIS DRAWING AND DESIGN.

THIS DRAWING AND DESIGN HAS BEEN PREPARED FOR THE CLIENT IDENTIFIED, TO MEET THE STANDARDS AND REQUIREMENTS OF THE APPLICABLE PUBLIC AGENCIES AT THE TIME OF PREPARATION. AES ENGINEERING, ITS EMPLOYEES, SUBCONSULTANTS AND AGENTS WILL NOT BE LIABLE FOR ANY LAXNESS OR OTHER NEGLIGENCE IN THE DESIGN OR CONSTRUCTION OF THE PROJECT. THE CLIENT SHALL BE RESPONSIBLE TO THIS DRAWING BY ANY THIRD PARTY, INCLUDING CONTRACTORS, SUPPLIERS, CONSULTANTS AND STAKEHOLDERS, THEIR EMPLOYEES OR AGENTS, WITHOUT AES ENGINEERING'S PRIOR WRITTEN CONSENT.

INFORMATION ON EXISTING UNDERGROUND FACILITIES MAY NOT BE COMPLETE OR ACCURATE. AES ENGINEERING, ITS EMPLOYEES AND DIRECTORS ARE NOT RESPONSIBLE NOR LIABLE FOR THE LOCATION OF ANY UNDERGROUND CONDUITS, PIPES, CABLES OR OTHER FACILITIES WHETHER SHOWN OR OMITTED FROM THIS DRAWING. THE CLIENT SHALL BE RESPONSIBLE FOR OBTAINING ALL NECESSARY PERMITS AND TESTING FACILITIES BY HAND DIGGING OR HYDROVAC AND ADVISE THE ENGINEER OF POTENTIAL CONFLICTS.



3960 Quadra Street
Suite 500
Victoria BC
Canada V8X 4A3
Tel 250 370 9221



DISTRICT OF SOOKE
2205 OTTER POINT ROAD SOOKE, BRITISH COLUMBIA, CANADA, V9Z 1J2

**CHURCH ROAD STREET LIGHTING,
ROUNDAABOUT & INTERSECTION DESIGN
CHURCH RD
LIGHTING LAYOUT**

Drawing No.

E1.01

Project Number
1-21-136

Rev.	6
------	---