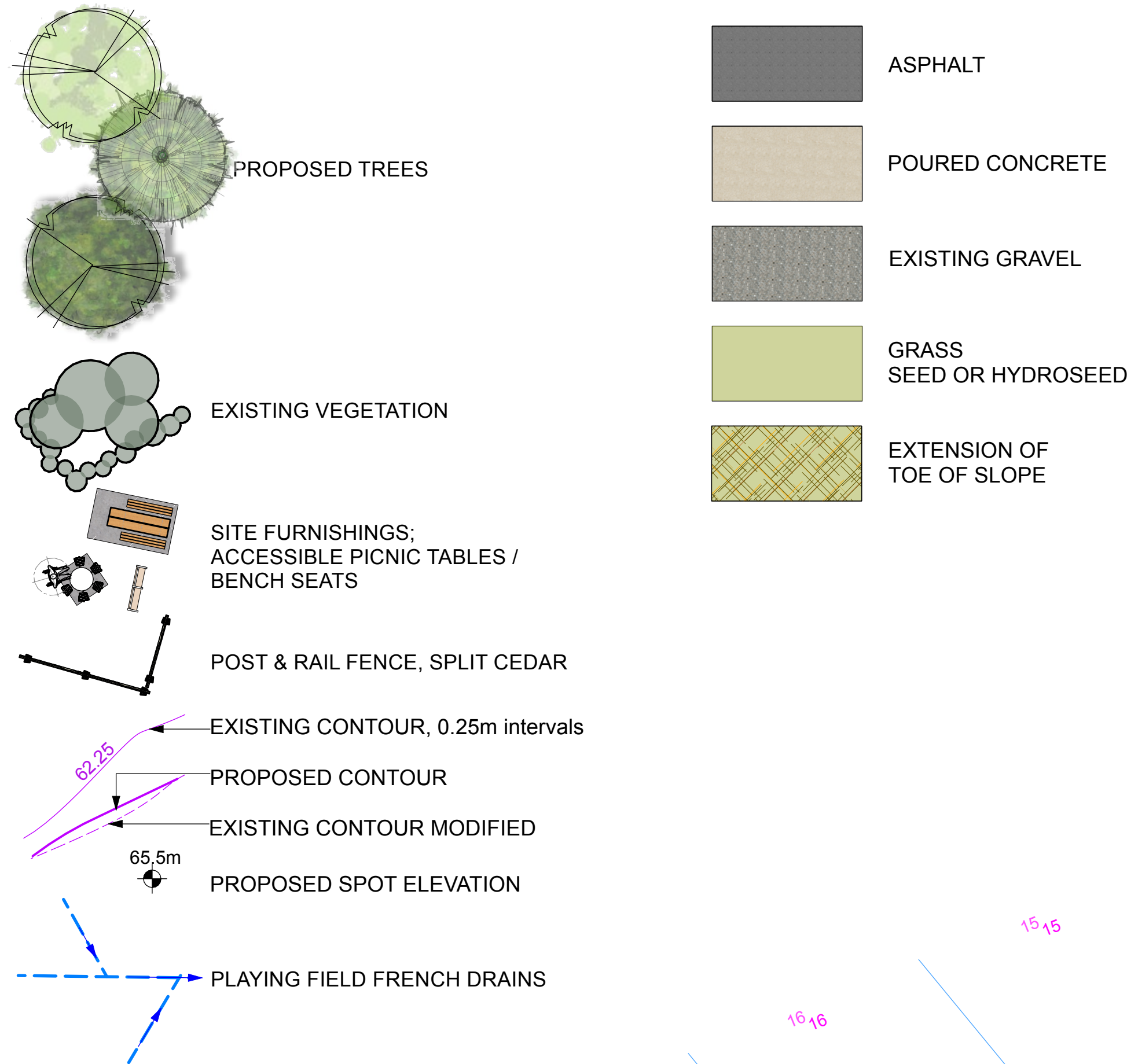


all drawings, designs, specifications used in connection with this project remain the property of Small & Rossell Landscape Architects Inc. whether the work is executed or not, and they shall not be used for any other work or project.

this drawing is a copyright drawing and shall not be reproduced or revised without the written permission of Small & Rossell Landscape Architects Inc.

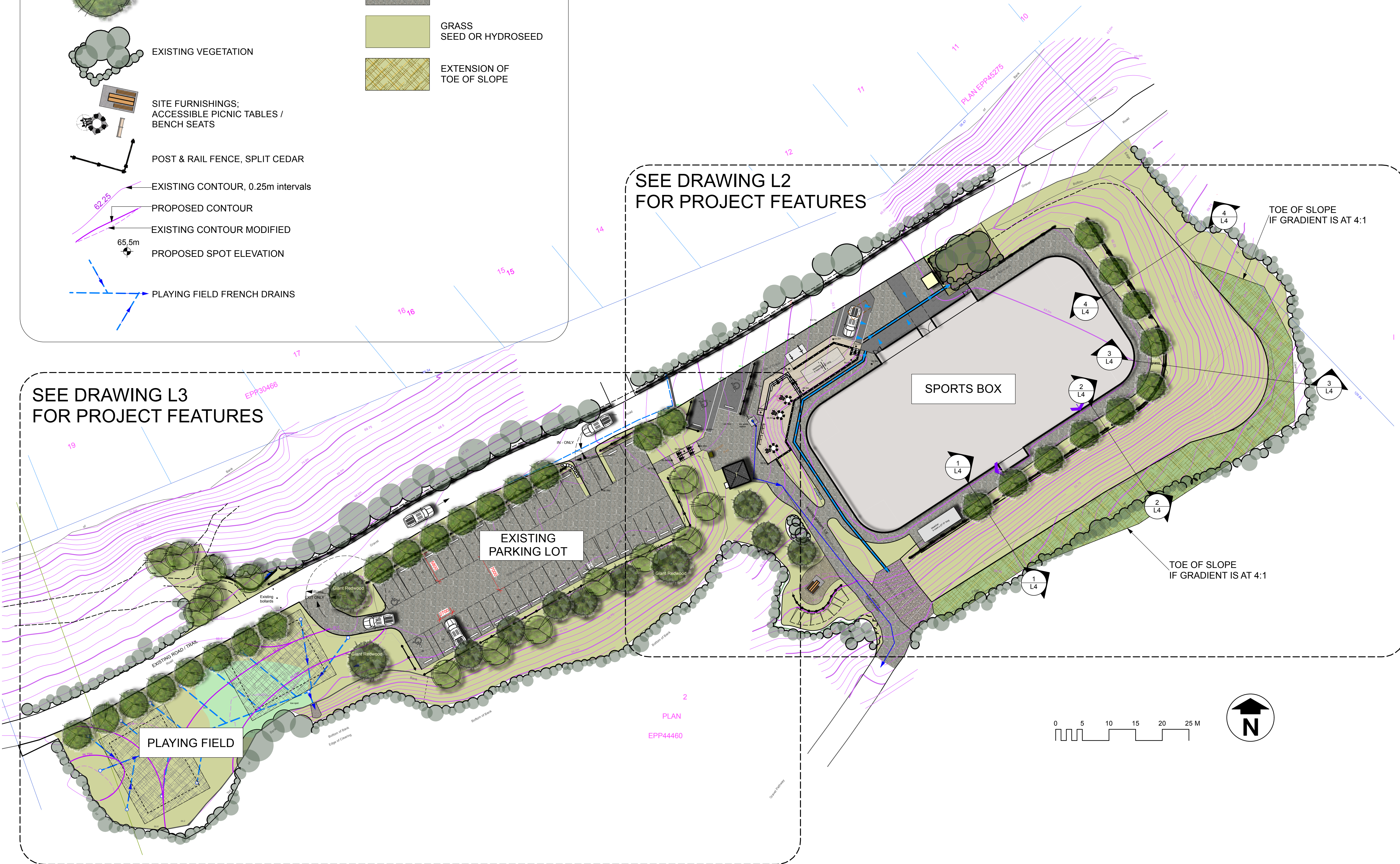
The drawing shall not be used for construction purposes unless marked "issued for construction"

LEGEND



SEE DRAWING L2
FOR PROJECT FEATURES

SEE DRAWING L3
FOR PROJECT FEATURES



Revision No.	Description	Date

Issue	Issue Date
MUNICIPAL REVIEW	14 FEBRUARY 2023
MUNICIPAL REVIEW	31 JANUARY 2023

Project

Raven's Ridge Park, Sooke, BC.
for
District of Sooke

Sheet Title

LANDSCAPE CONCEPT PLAN
OVERALL

Drawn By
CAR

Checked
SRLA

Scale
1:350

Revision

Sheet Number

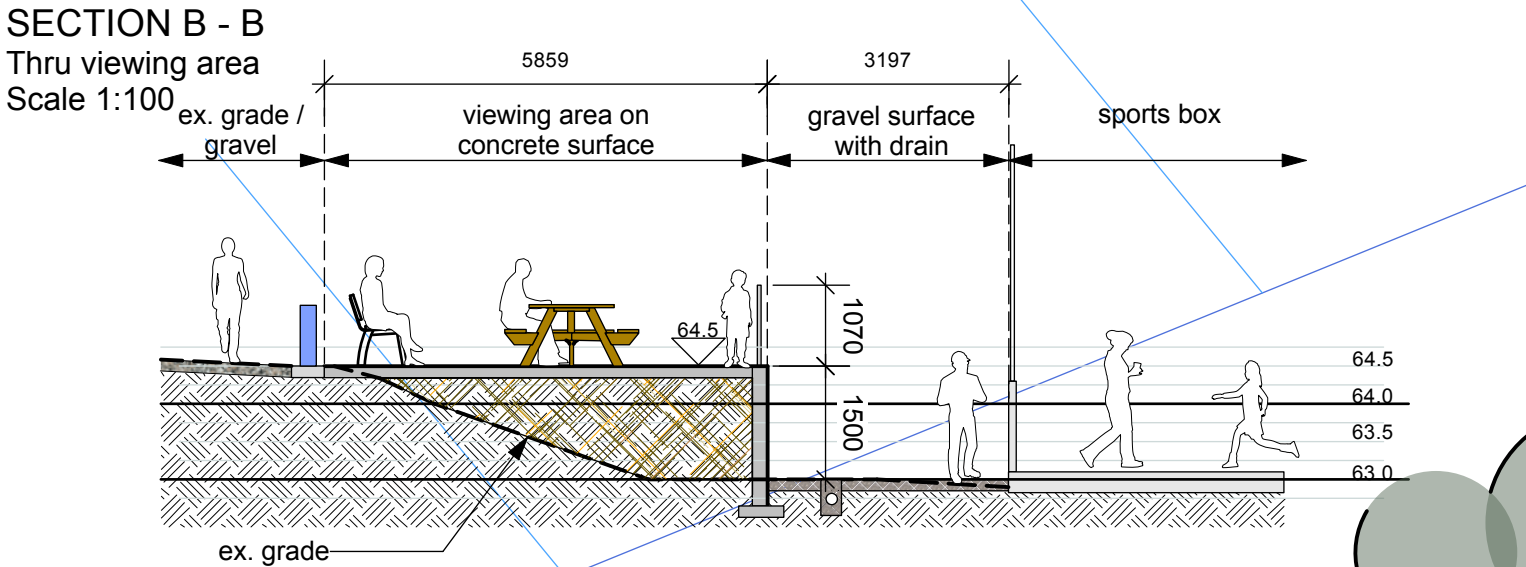
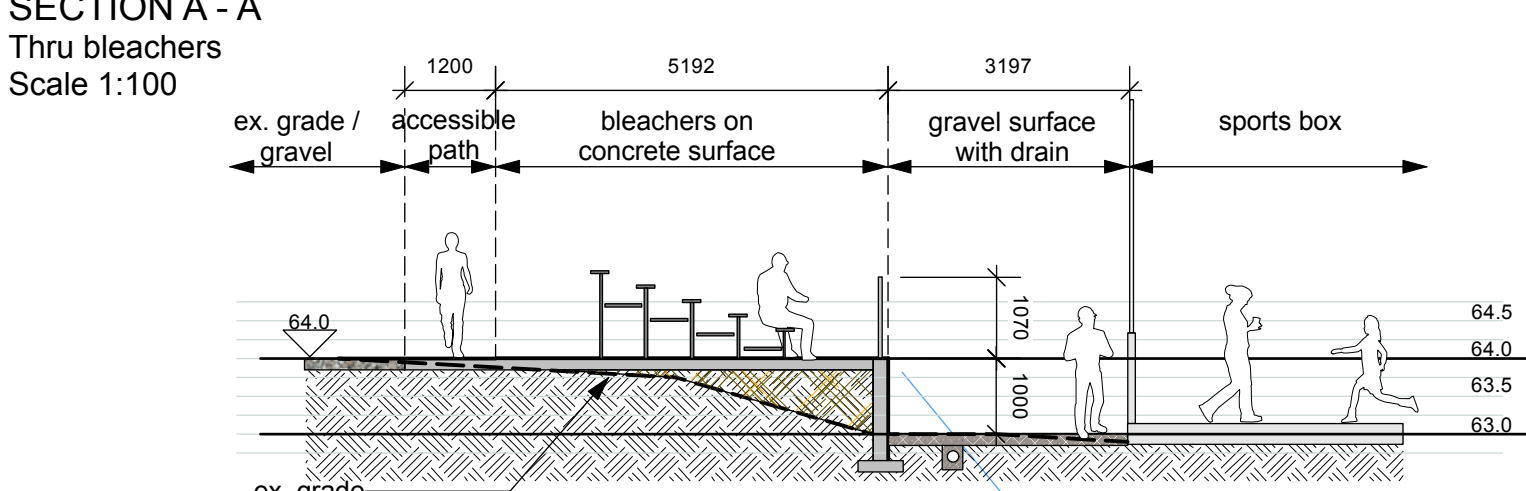


PHOTO #1



PHOTO #2

SMALL & ROSSSELL
LANDSCAPE ARCHITECTS INC

3012 manzer road, sooke, b.c., v9z 0c9
t: 250-642-6967

design@smallandrossell.com
www.smallandrossell.com

all drawings, designs, specifications used in connection with this project remain the property of Small & Rossell Landscape Architects Inc. whether the work is executed or not, and they shall not be used for any other work or project.
this drawing is a copyright drawing and shall not be reproduced or revised without the written permission of Small & Rossell Landscape Architects Inc.
The drawing shall not be used for construction purposes unless marked "issued for construction"

3

PLAN

EPP44460

SPORTS BOX

LEGEND

- ASPHALT
- POURED CONCRETE
- EXISTING GRAVEL
- GRASS - SEED OR HYDROSEED
- EXTENSION OF TOE OF SLOPE

- PROPOSED TREES
- EXISTING VEGETATION
- SITE FURNISHINGS:
ACCESSIBLE PICNIC TABLES /
BENCH SEATS
- POST & RAIL FENCE, SPLIT CEDAR
- EXISTING CONTOUR, 0.25m intervals
- PROPOSED CONTOUR
- EXISTING CONTOUR MODIFIED
- PROPOSED SPOT ELEVATION

KEY TO FEATURES

- ACCESSIBLE VIEWING AREA WITH SEATING AND PICNIC TABLES.
Accessible from parking stalls, grade matches adjacent existing gravel area @ 64.5m. Surfaced with concrete, contained by concrete retaining wall.
- BLEACHERS, see photo #1 for typical size, SEAPARC to select.
Raised viewing area, @ 64.0m contained by concrete retaining wall, access up steps.
- ACCESSIBLE PARKING STALLS x 3 in total, asphalt surface. stall angled to allow for 7.0m backing-up distance.
- CONCRETE STEPS, 2.0m wide with central handrail, connects parking lot to facilities and viewing area.
- ACCESSIBLE PICNIC TABLE, area regraded to create level space, post & rail cedar fence at top of slope.
- BLEACHERS - FUTURE PHASE, see photo for typical size, SEAPARC to select.
Alternative to creating "raised platform" use raised bleachers, see photo #2.
- TREES - Acer rubrum "October Glory" at 8.0m centres, planted in grass edge, new post & rail cedar fence at top of slope, see cross sections on L4.
- SLOPE REGRADED to 4:1 see cross sections on L4.
- ASPHALT SURFACE APRON to Sports Box, drains to french drain and to drainage swale.
- EXISTING DRAINAGE SWALE, remove invasive spp. New post & rail fence at top of swale.
- FRENCH DRAIN in existing gravel surface, drains to rock dispersal area
- WATER BAR or CATCH BASIN AND BURIED PIPE, drains to ditch.

Revision No.	Description	Date
--------------	-------------	------

Issue	Issue Date
MUNICIPAL REVIEW	14 FEBRUARY 2023
MUNICIPAL REVIEW	19 JANUARY 2023

Project
Raven's Ridge Park, Sooke, BC.
for
District of Sooke

Sheet Title
LANDSCAPE CONCEPT PLAN
EAST

Drawn By
CAR

Checked
SRLA

Scale
1:200

Revision

Sheet Number

L2

LEGEND

ASPHALT

POURED CONCRETE

EXISTING GRAVEL

GRASS - SEED OR HYDROSEED

PROPOSED TREES

EXISTING VEGETATION

PLAYING FIELD FRENCH DRAINS

POST & RAIL FENCE, SPLIT CEDAR

EXISTING CONTOUR, 0.25m intervals

PROPOSED CONTOUR

EXISTING CONTOUR MODIFIED

PROPOSED SPOT ELEVATION

- KEY TO FEATURES
- 13

IMPROVED ACCESS INTO PARKING LOT
- 14

IRRIGATION CONTROLLER, BATTERY OPERATED
- 15

ACCESSIBLE PARKING STALLS, close access to playing field
- 16

NEW BERM and feature Sequoia tree
- 17

POST & RAIL FENCE to edge road at top of ditch, extends to existing bollards.
- 18

TREES - broad headed varieties at 6.0m (or more) centres:
- Acer rubrum "October Glory" / Morgan,
- Liquidamber styraciflua,
- Platanus x acerifolia 'Exclamation!' ('Morton Thornhill')
- 19

TREES - Quercus garryana, Abies grandis, Pinus contorta contorta mix (Garry oak, Grand fir, Shore pine), planted at top of slope.
- 20

SLOPE - remains as graded, cultivate for hydroseeding
- 21

SLOPE - steep and eroding, assess for additional erosion control.
- 22

PLAYING FIELD - regrade to eliminate low spot, herringbone "french drain" drainage system proposed. Laterals @ 6.09m / 20' intervals. Drains to slope with head wall and erosion control cobble splash pad. Provide 150mm sandy loam topsoil and sports turf grass seed.
- 23

BASKETBALL COURT - 3 on 3, 15m x 11m, space + 1.0m edge. Optional locations shown subject to Habitat Systems design:
a) close to parking lot, potential conflict with traffic / trees / unstable slope at south.
b) at distance from parking lot, more space, leaves grass area close to parking lot.
- 24

TREES - Quercus garryana, Garry oak trees planted to create a "grove" and allow access to existing access / trails. Water control berm to direct water from slope to existing ditch



all drawings, designs, specifications used in connection with this project remain the property of Small & Rossell Landscape Architects inc. whether the work is executed or not, and they shall not be used for any other work or project.

this drawing is a copyright drawing and shall not be reproduced or revised without the written permission of Small & Rossell Landscape Architects inc.

The drawing shall not be used for construction purposes unless marked 'issued for construction'

Revision No.	Description	Date
--------------	-------------	------

Issue	Issue Date
MUNICIPAL REVIEW	14 FEBRUARY 2023
MUNICIPAL REVIEW	19 JANUARY 2023

Project

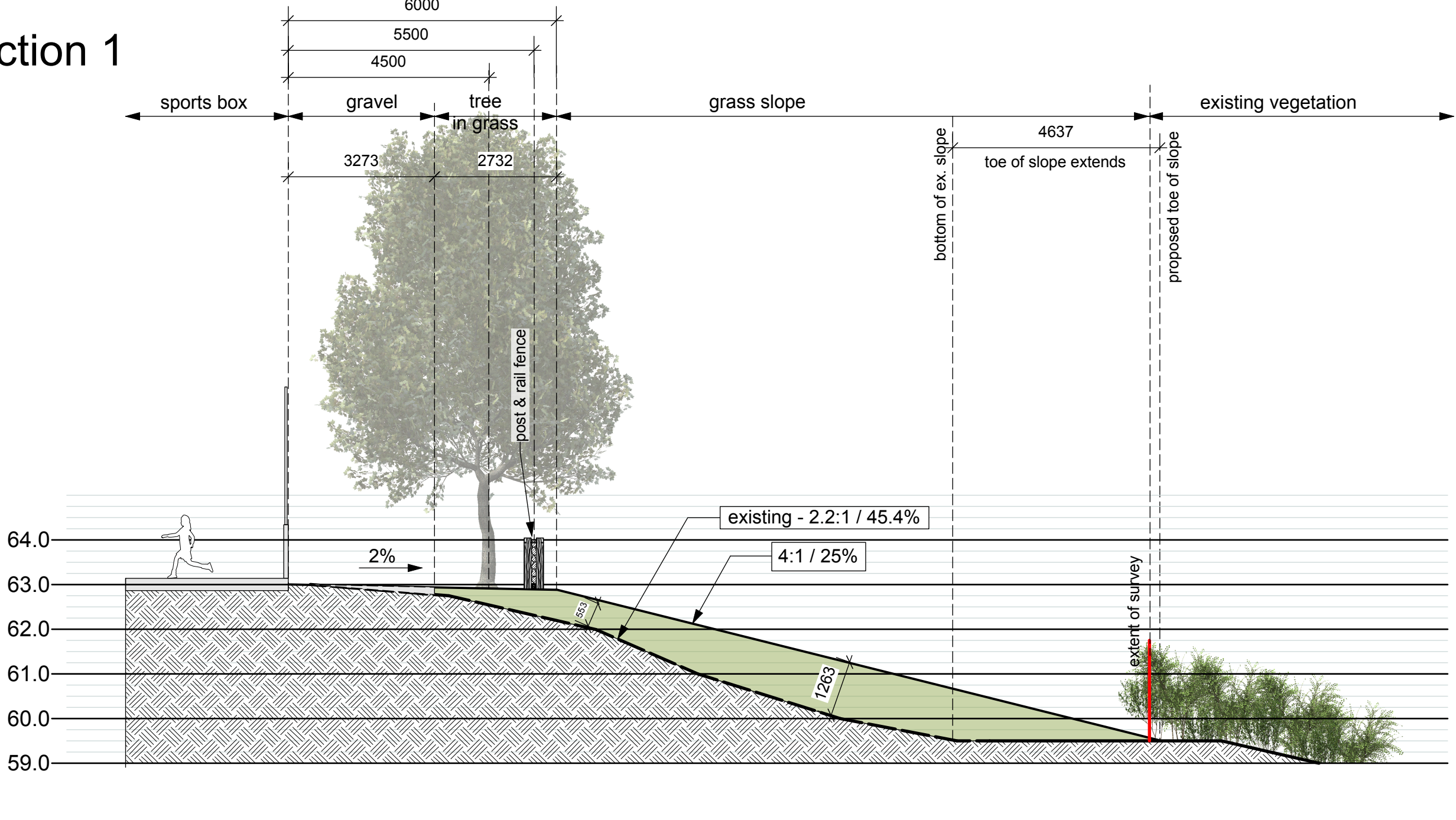
Raven's Ridge Park, Sooke, BC.
for
District of Sooke

Sheet Title

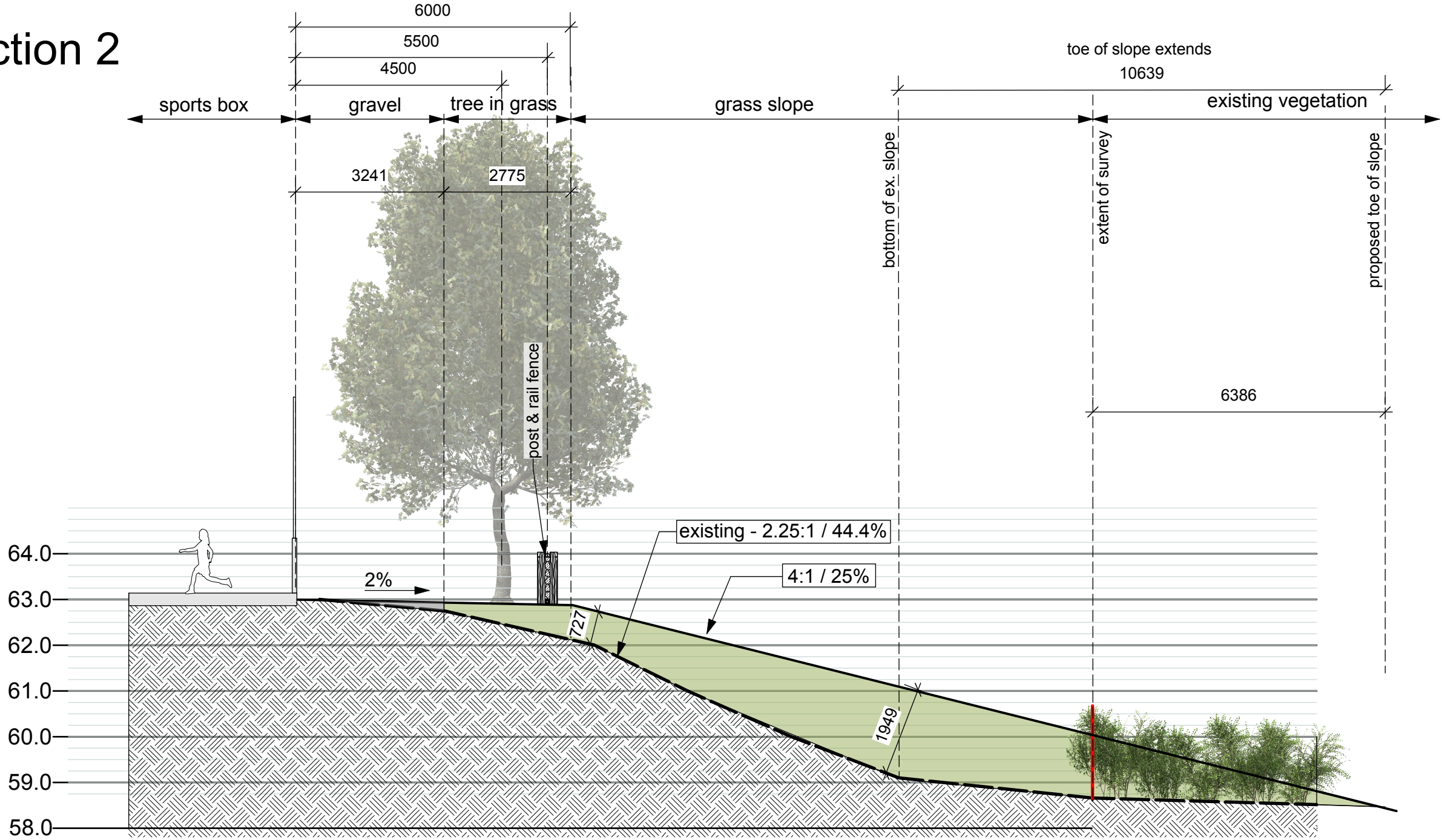
LANDSCAPE CONCEPT PLAN
WEST

Drawn By	Checked
CAR	SRLA
Scale	
1:200	
Revision	Sheet Number

Section 1



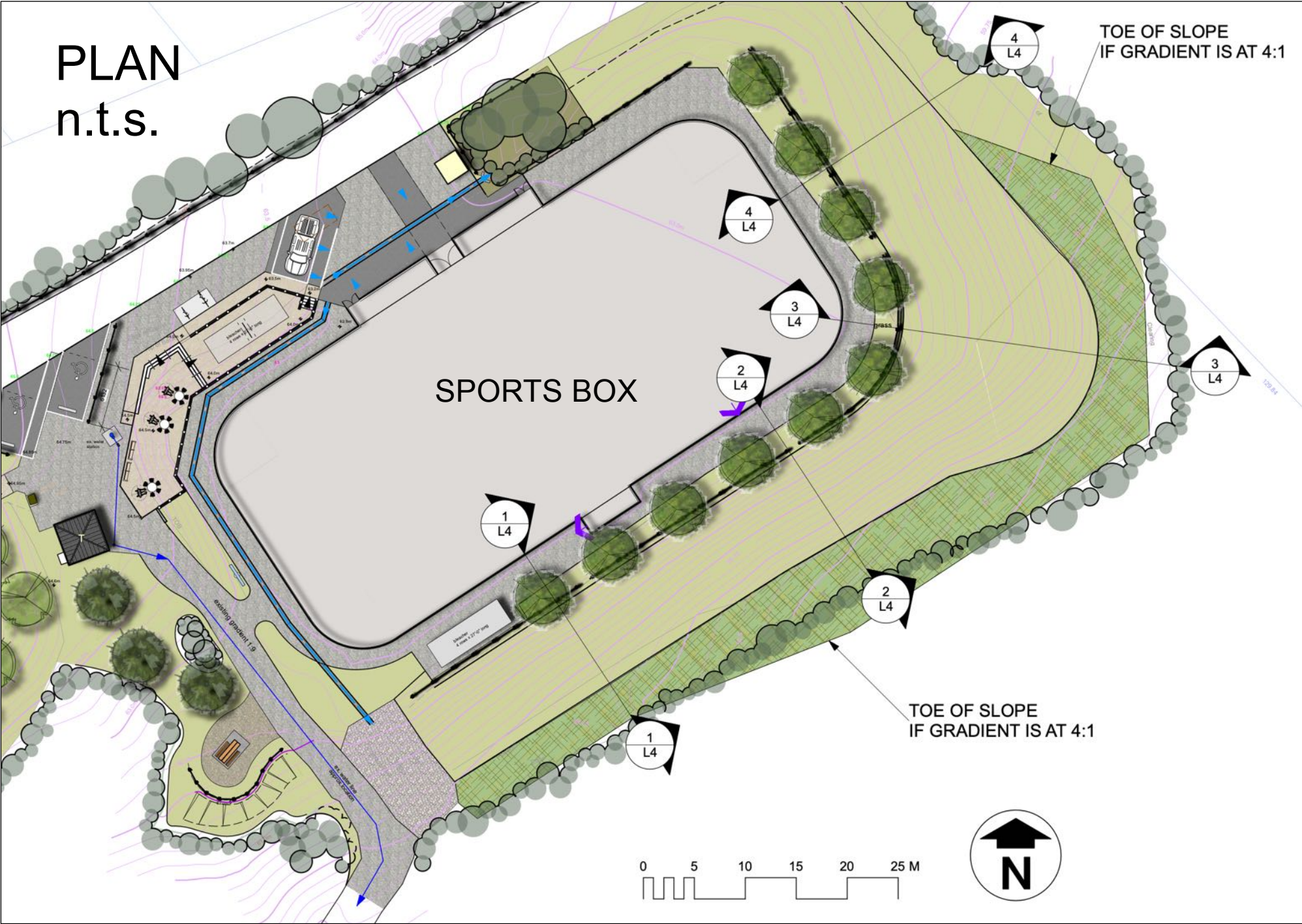
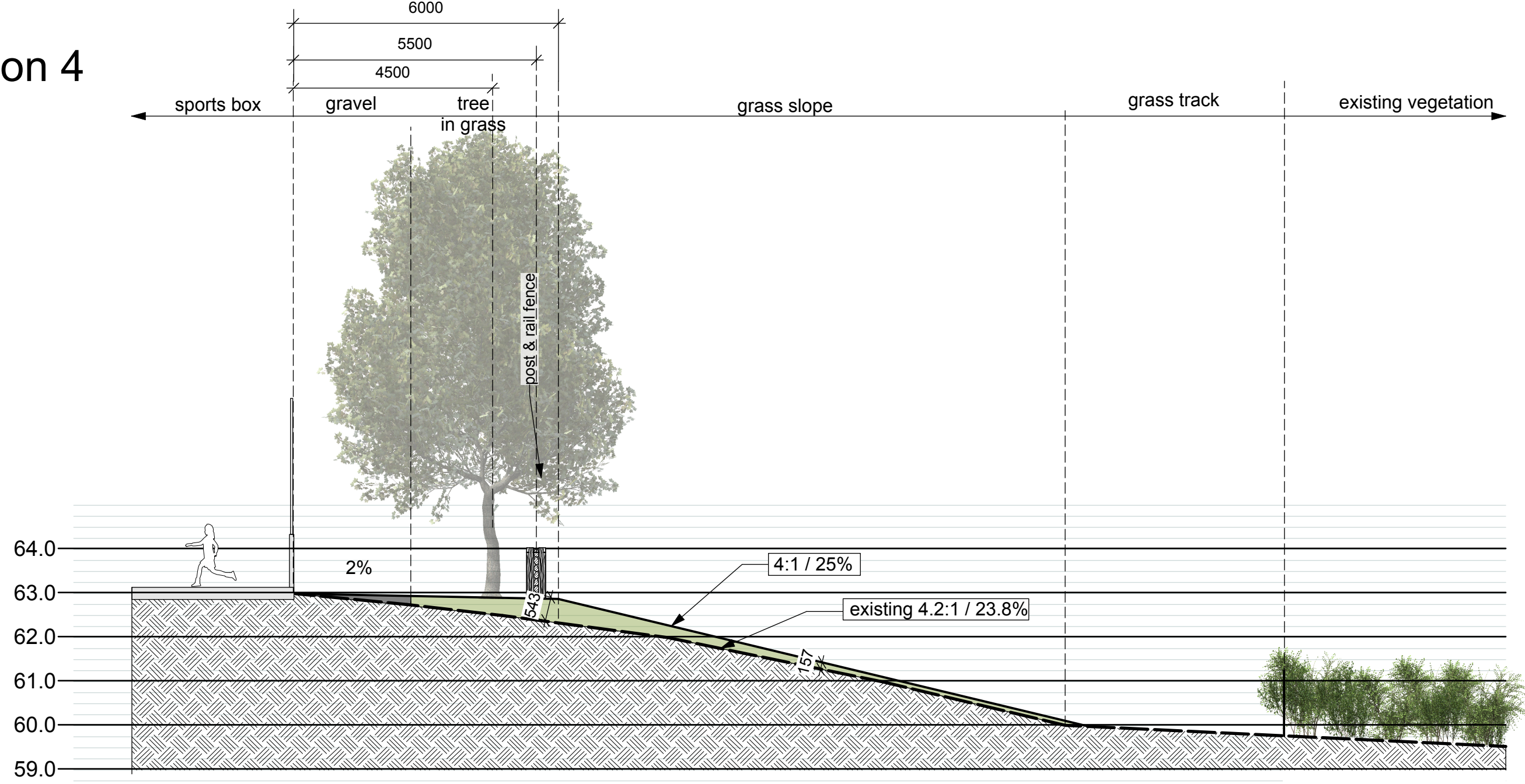
Section 2



Section 3



Section 4



all drawings, designs, specifications used in connection with this project remain the property of Small & Rossell Landscape Architects inc, whether the work is executed or not, and they shall not be used for any other work or project.
this drawing is a copyright drawing and shall not be reproduced or revised without the written permission of Small & Rossell Landscape Architects inc.
The drawing shall not be used for construction purposes unless marked "issued for construction"

Revision		
No.	Description	Date

Issue		Issue Date
MUNICIPAL REVIEW	MUNICIPAL REVIEW	14 FEBRUARY 2023
MUNICIPAL REVIEW	MUNICIPAL REVIEW	31 JANUARY 2023

Project
Raven's Ridge Park, Sooke, BC.
for
District of Sooke

Sheet Title
SPORTS BOX SLOPE
SECTIONS 1 - 4

Drawn By CAR	Checked SRLA
Scale 1:100	Sheet Number