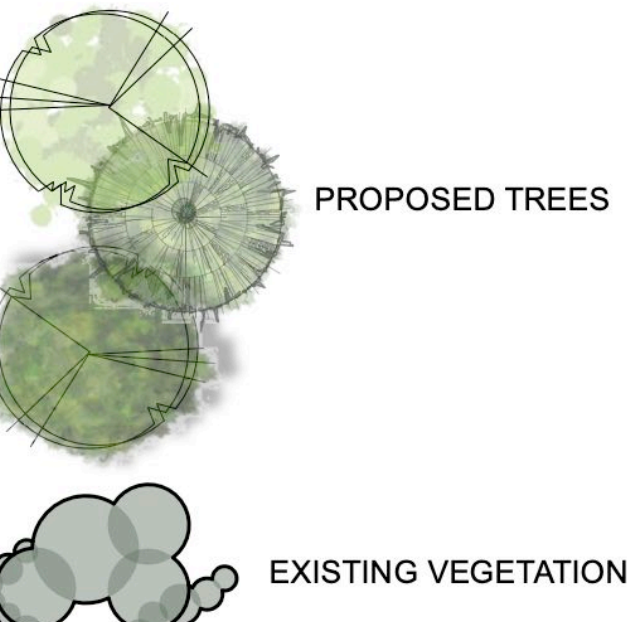


- LEGEND
- ASPHALT
  - POURED CONCRETE
  - EXISTING GRAVEL
  - GRASS - SEED OR HYDROSEED



- PLAYING FIELD FRENCH DRAINS
- POST & RAIL FENCE, SPLIT CEDAR
- EXISTING CONTOUR, 0.25m intervals
- PROPOSED CONTOUR
- EXISTING CONTOUR MODIFIED
- PROPOSED SPOT ELEVATION

- KEY TO FEATURES
- 13 IMPROVED ACCESS INTO PARKING LOT
  - 14 IRRIGATION CONTROLLER, BATTERY OPERATED
  - 15 ACCESSIBLE PARKING STALLS, close access to playing field
  - 16 NEW BERM and feature Sequoia tree
  - 17 POST & RAIL FENCE to edge road at top of ditch, extends to existing bollards.
  - 18 TREES - broad headed varieties at 6.0m (or more) centres:
    - Acer rubrum "October Glory" / Morgan,
    - Liquidamber styraciflua,
    - Platanus x acerifolia 'Exclamation!' (Morton Thornhill)
  - 19 TREES - Quercus garryana, Abies grandis, Pinus contorta contorta mix (Garry oak, Grand fir, Shore pine), planted at top of slope.
  - 20 SLOPE - remains as graded, cultivate for hydroseeding
  - 21 SLOPE - steep and eroding, assess for additional erosion control.
  - 22 PLAYING FIELD - regrade to eliminate low spot, herringbone "french drain" drainage system proposed. Laterals @ 6.09m / 20' intervals. Drains to slope with head wall and erosion control cobble splash pad. Provide 150mm sandy loam topsoil and sports turf grass seed.
  - 23 BASKETBALL COURT - 3 on 3, 15m x 11m, space + 1.0m edge. Optional locations shown subject to Habitat Systems design:
    - a) close to parking lot, potential conflict with traffic / trees / unstable slope at south.
    - b) at distance from parking lot, more space, leaves grass area close to parking lot.
  - 24 TREES - Quercus garryana, Garry oak trees planted to create a "grove" and allow access to existing access / trails. Water control berm to direct water from slope to existing ditch



all drawings, designs, specifications used in connection with this project remain the property of Small & Rossell Landscape Architects Inc. whether the work is executed or not, and they shall not be used for any other work or project.

this drawing is a copyright drawing and shall not be reproduced or revised without the written permission of Small & Rossell Landscape Architects Inc.

The drawing shall not be used for construction purposes unless marked "issued for construction"

Revision		
No.	Description	Date

Issue		Issue Date
MUNICIPAL REVIEW	MUNICIPAL REVIEW	14 FEBRUARY 2023
MUNICIPAL REVIEW	MUNICIPAL REVIEW	19 JANUARY 2023

Project	
Raven's Ridge Park, Sooke, BC. for District of Sooke	
Sheet Title	
LANDSCAPE CONCEPT PLAN WEST	
Drawn By	Checked
CAR	SRLA
Scale	
1:200	
Revision	Sheet Number