

Thank-you to everyone that participated in the survey for each master plan. Here are the results:

[Part One - Parks + Trails Master Plan Survey results](#)

[Part Two - Transportation Master Plan Survey Results](#)

The next round of public engagement will occur when a draft report is ready to bring forward the recommendations in late summer 2019.

PART ONE

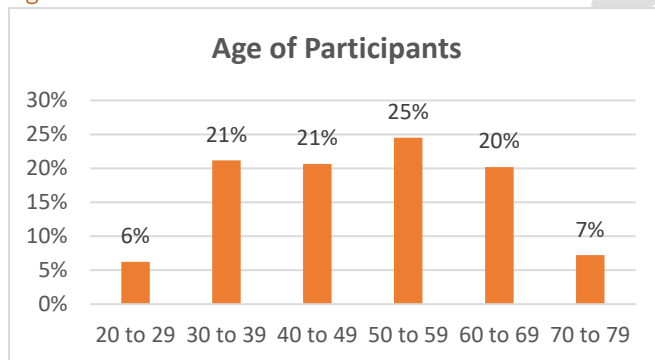
Community Online Survey

As part of the engagement process for Sooke's Parks and Trails Master Plan, an online community survey was used to collect input on participation and satisfaction with existing parks, trails, and recreation activities, as well as priorities for future improvements. The online survey was available from January 9, 2019 to February 26, 2019 and was completed by 304 community members.

Survey Participants

Participants were encouraged to answer some basic demographic questions to provide the study team a better understanding of needs and the degree to which participants represent the broader community.

Age Distribution



The survey had a good distribution of participants across age groups. However, there were notably fewer responses from adults aged 20 to 29 and 70 to 79.

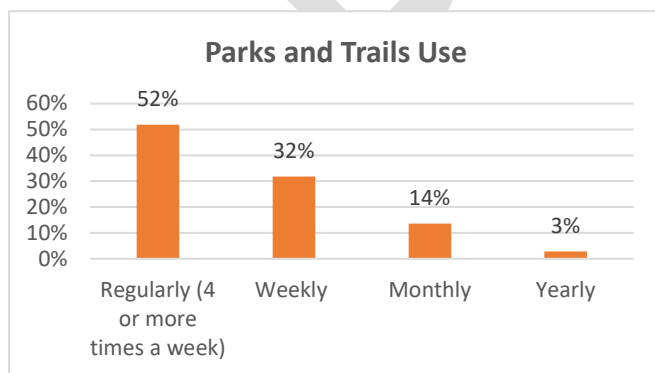
Children Living at Home

Survey participants were asked to indicate whether or not they have children 16 or younger living at home. Of those who answered the question, 34 percent of participants responded that they had children at home and 66 percent of participants said they did not.

Dog Owners

Sixty-two percent of participants were dog owners and 38 percent were not.

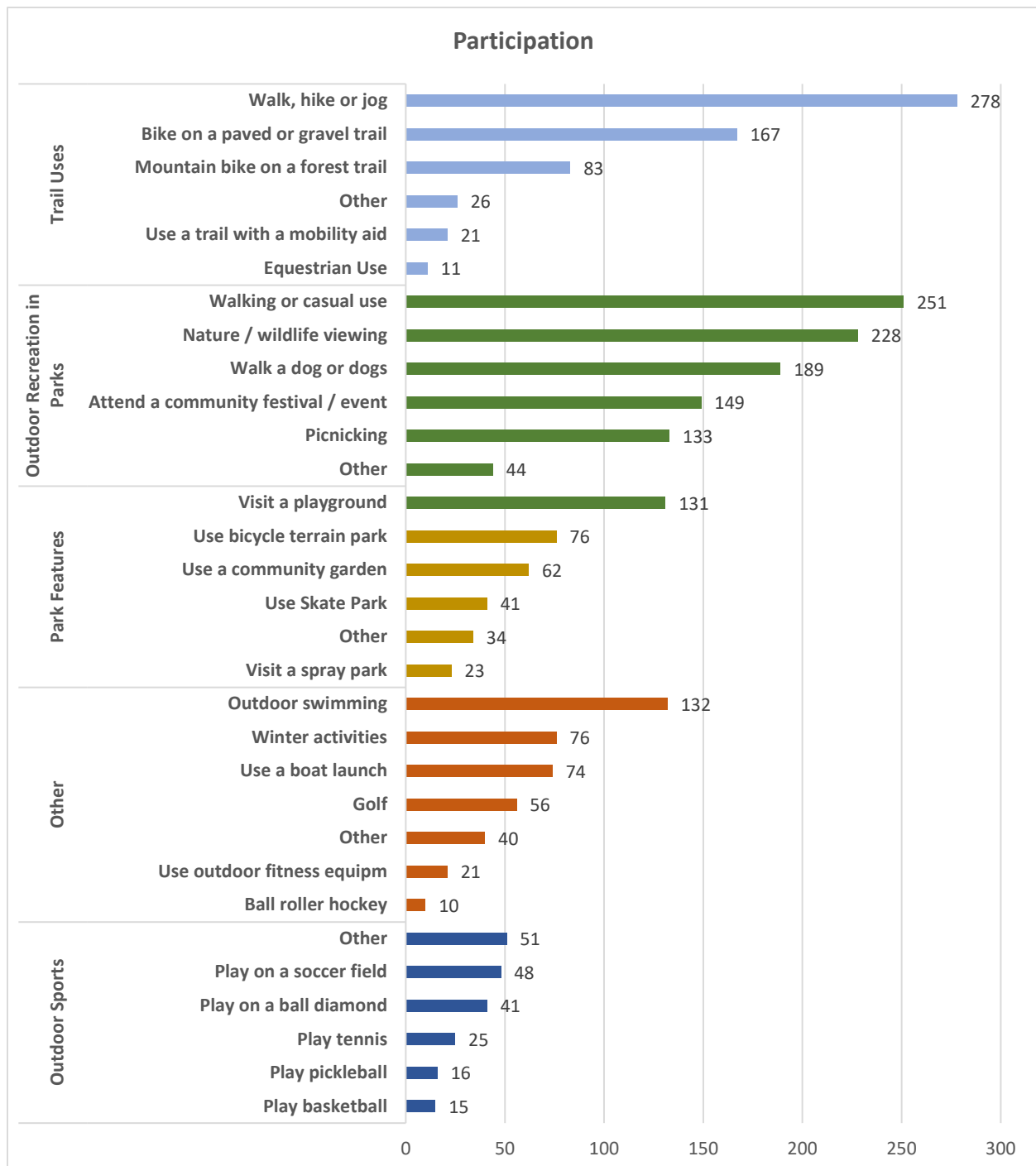
Parks and Trails Use



More than half of survey participants reported that they use Sooke's parks and trails four or more times a week. Only 3 percent of participants were infrequent users.

Participation

Survey participants were asked to report if any individual in their household participated in activities in Sooke within the past year. The graph below summarizes responses from participants. Walking, hiking, and jogging had the highest participation, followed by walking or casual use in parks and nature / wildlife viewing. Ball roller hockey and equestrian use had the lowest participation.



In each category of activity, survey participants who selected 'other' were asked to specify their answer. Their responses are grouped and themed below. The numbers in parentheses show how many comments were related to each theme. In many cases, these activities were listed in other categories.

Trail Uses

- Dog walking (8) and off-leash area use (3)
- Bird watching (2)
- Plant identification (2)
- Kayak launch (2)
- Fishing (2) and crabbing
- Off-roading (e.g., 4x4, ATV) (2)
- Geocaching
- Trail guides

Outdoor Recreation in Parks

- Running (3)
- Camping (3)
- Making art (2)
- Hiking (3)
- Photography (2)
- Meditation and relaxation with friends (2)

Outdoor Sports

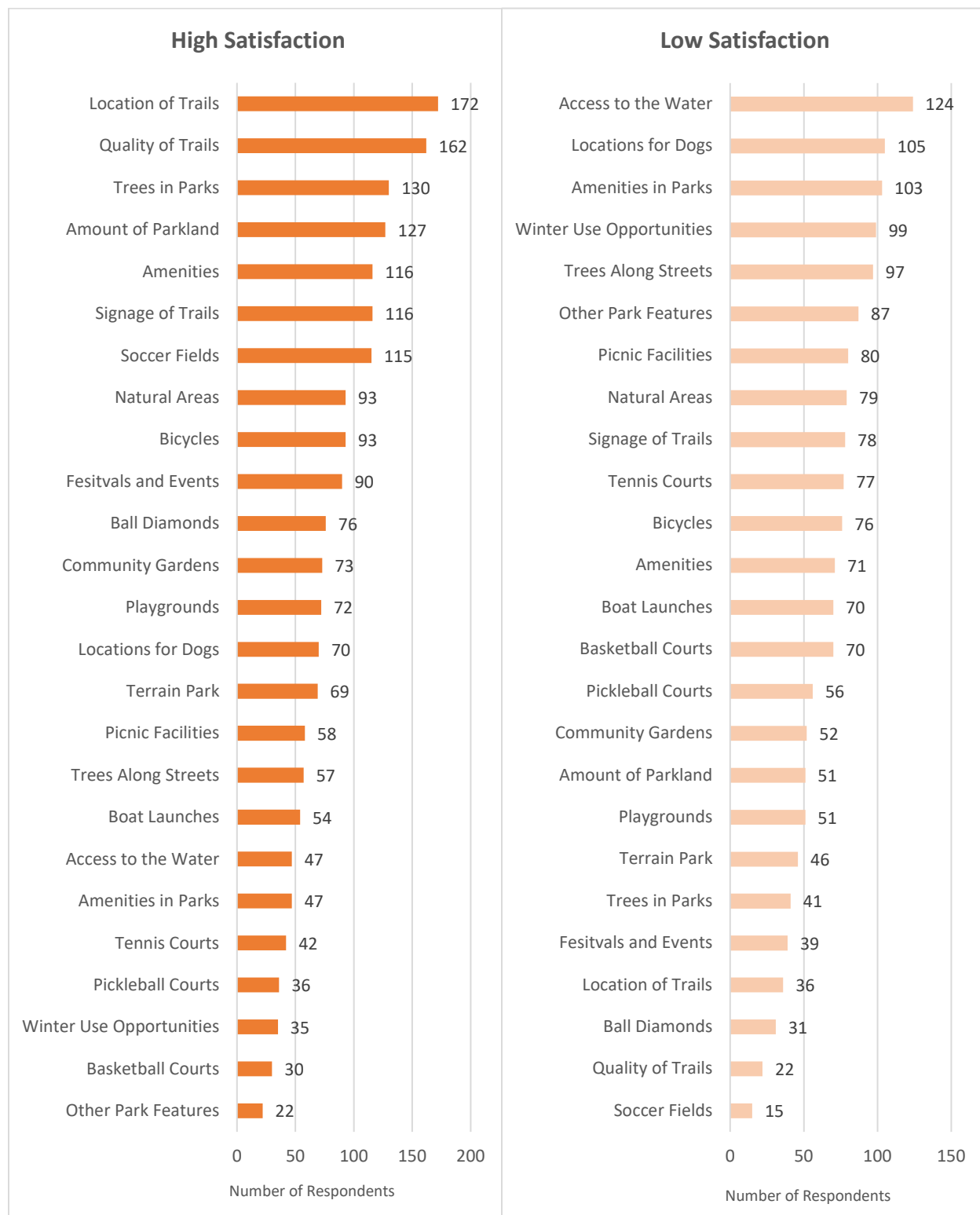
- Mountain biking (11)
- Biking (5)
- Water sports (e.g. kayaking, paddle boarding, surfing, swimming, canoeing, dragon-boat racing) (5)
- Fishing (4)
- Swimming (3)
- Play bocce (2)
- Sailing (2)
- Skateboarding (2)
- Play frisbee (2)
- Fly kites (2)
- Kayaking (2)
- Winter sports (e.g. ice hockey, cross-country skiing, snowshoeing) (2)
- Toss-around sports (e.g. frisbee, baseball, football) (2)
- Golfing
- Fishing
- Play badminton
- Play football

Park Features

- Use amenities (e.g. benches, washrooms, picnic tables) (4)
- Use bike wash station
- Use trails (2)
- Use amphitheatre

Satisfaction

Survey participants were asked to rate their satisfaction with trails, parks, and recreation activities in Sooke on a scale of 1 to 5 stars, with 1 being very unsatisfied and 5 being very satisfied. To illustrate participant satisfaction more clearly, the graphs below show ratings for 4 and 5 (high satisfaction) and 1 and 2 (low satisfaction) grouped together in order of the number of people selecting the high or low ratings respectively.



Participants also had the option of providing additional comments for their ratings. Below is a summary of the themes mentioned by at least three participants. The numbers in parentheses show how many comments were related to each theme. Verbatim comments are provided in Appendix A.

Trails

- Need more amenities (e.g., washrooms, garbage cans, water fountains, lighting, parking) (14)
- Lack of connectivity between trails and town centre (11)
- Need more maintenance and repairs on trails (9)
- Need trails that are stroller-friendly and accessible for all abilities and ages (5)
- Need more signage, maps, and interpretive guides (4)
- Limited access points (3)

Parks

- Need dog parks (5) and both off-leash (20) and leash enforcement areas (7) in parks
- Interest in more local festivals and events (11)
- Need more community gardens (10) that are accessible by all modes of transportation (3)

Park Features

- Need water / spray park (26)
- Need more amenities (e.g., washrooms, lighting, garbage cans) (25) and picnic facilities (9)
- Need more parks close to town centre and close to family neighbourhoods for all ages (4)
- Need outdoor exercise equipment for adults (3)

Other

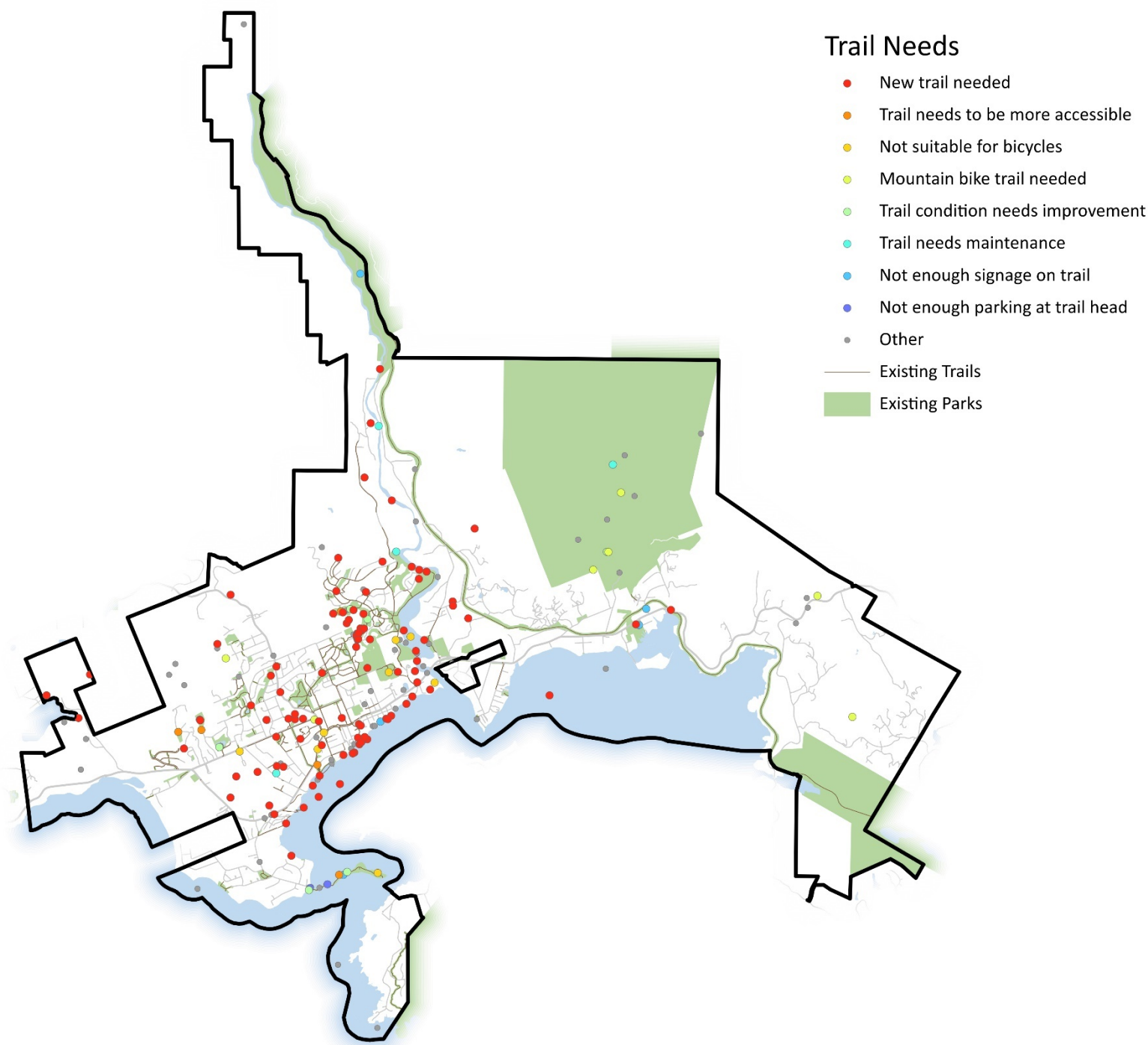
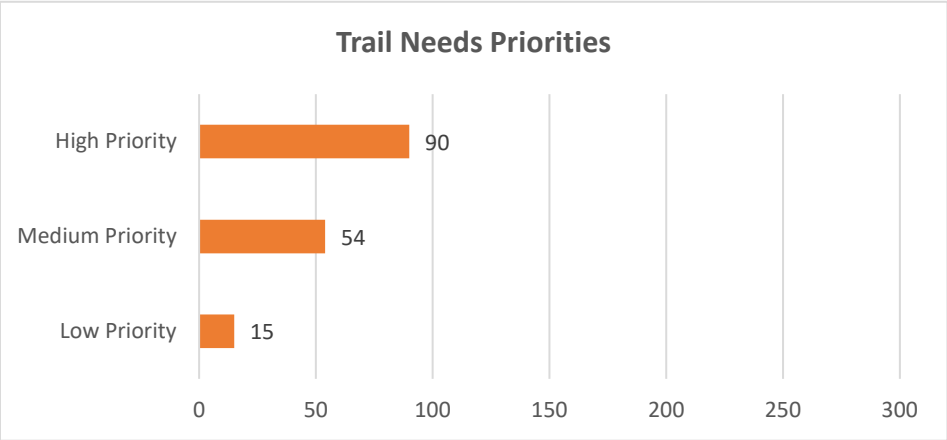
- Need more public access to water (18) and better signage (6)
- Need more public parking spaces close to water access and boat launch areas (12)
- Preserve natural environment and parkland spaces (11)
- Plant more trees (5) and protect old growth trees (4)
- Plant trees only if they do not impede on safety (4)
- Need better facilities and more safe areas for boat, kayak, and canoe launches (5)

Needs and Priorities

Survey participants were asked to identify their needs and priorities on a map by dropping markers on specific locations. Participants were able to choose from five markers related to trail need, park need, sports need, amenities need, or the environment. The maps below show the marker locations that were identified by participants. Participants also had the option of providing additional comments if they selected 'other' and identified a need not listed. A summary of themes mentioned by at least two participants are included below. Verbatim comments are provided in Appendix B.

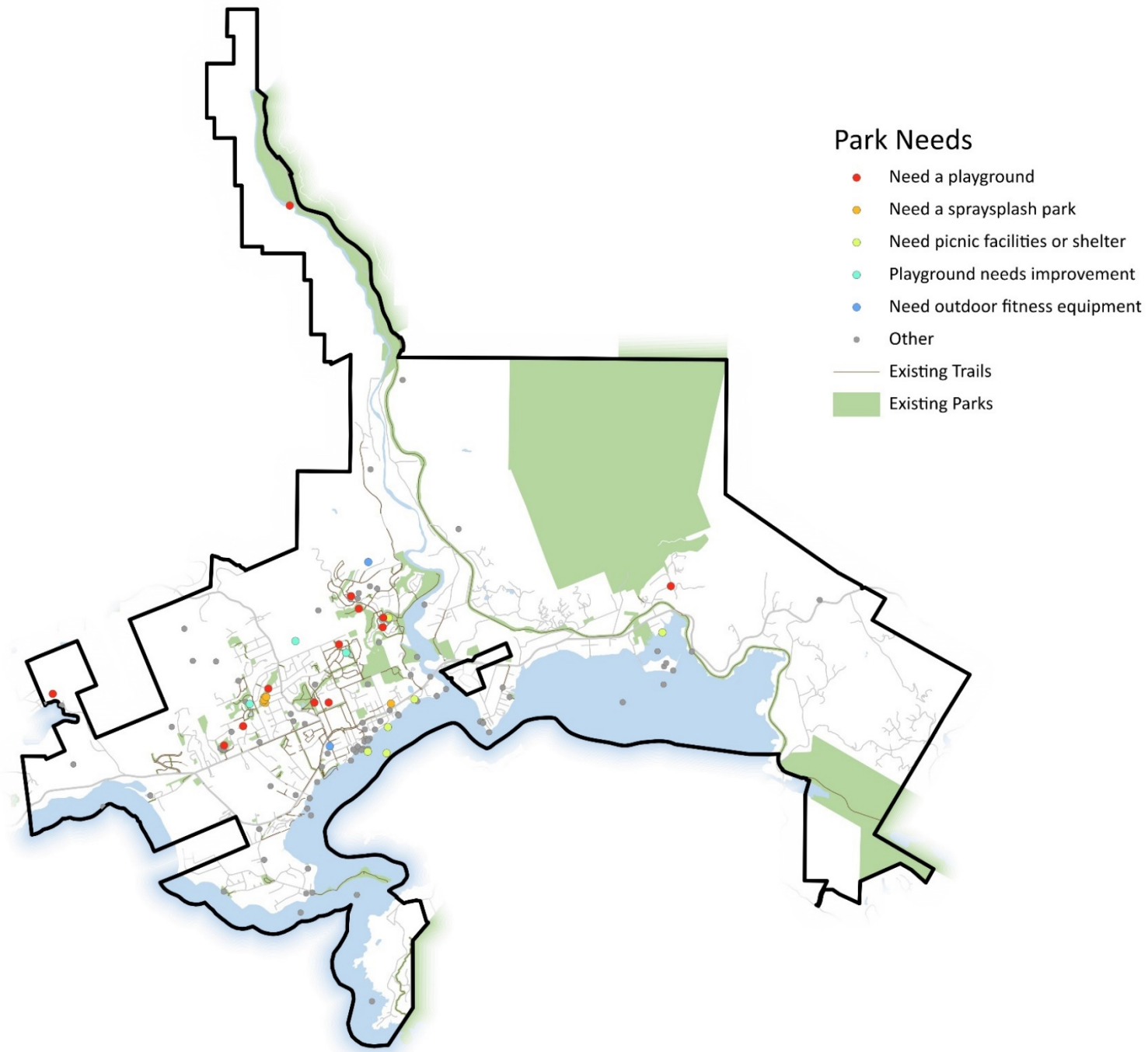
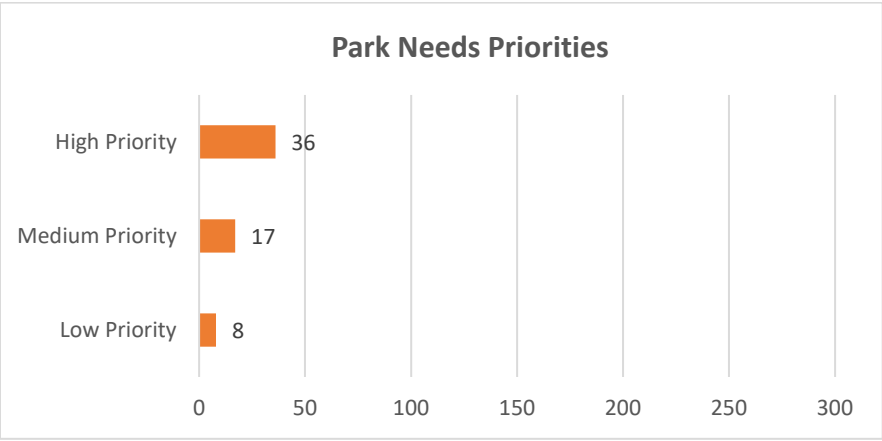
Trail Needs

Survey participants identified the greatest need for the development of new trails. Participants also commented on other needs for more waterfront (3) and trail access especially for pedestrians, cyclists, and equestrian use (6), and better connectivity to trails (3).



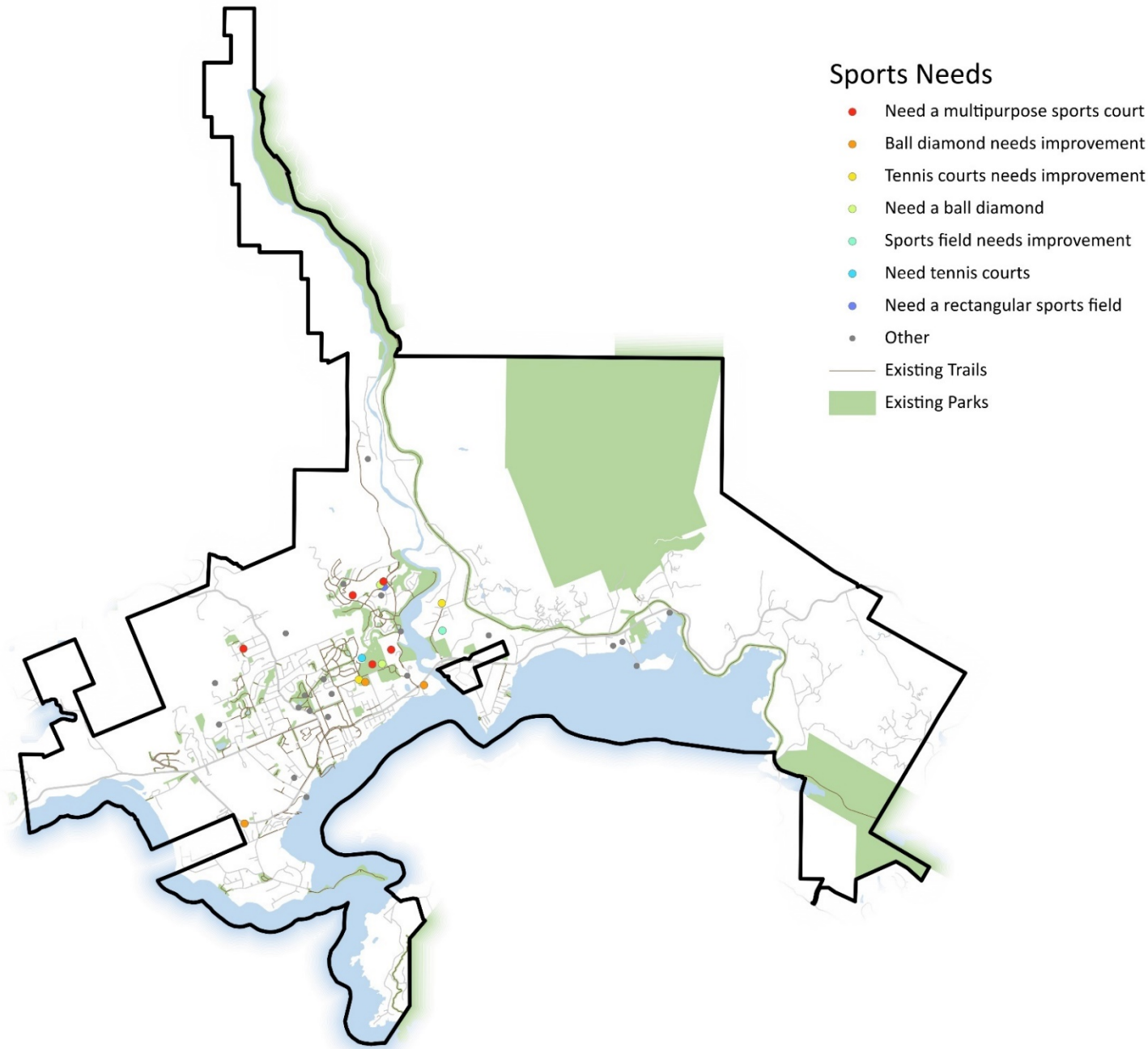
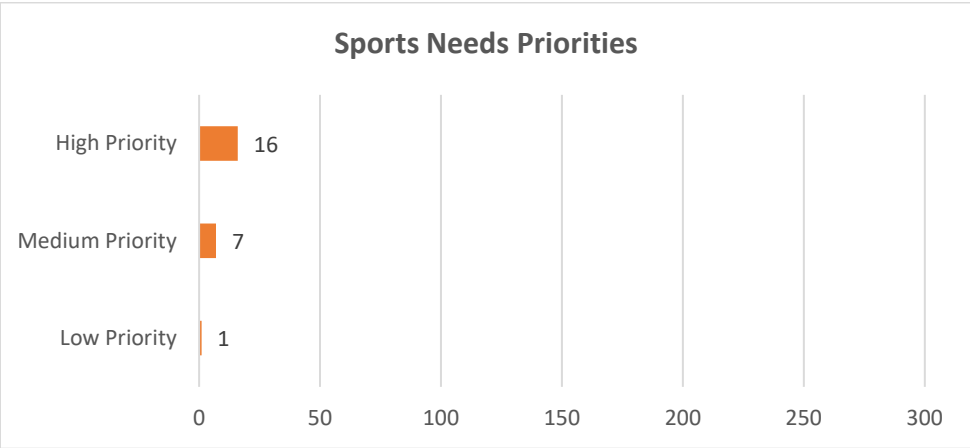
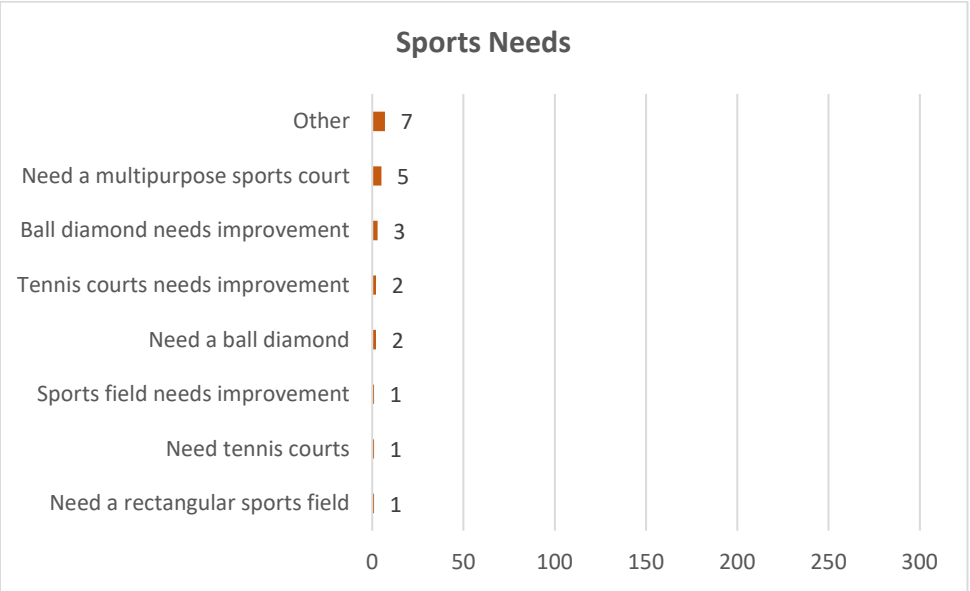
Park Needs

Survey participants identified the greatest need for more public access to waterfront. Participants also identified needs for more playgrounds (13) and spray parks (7).



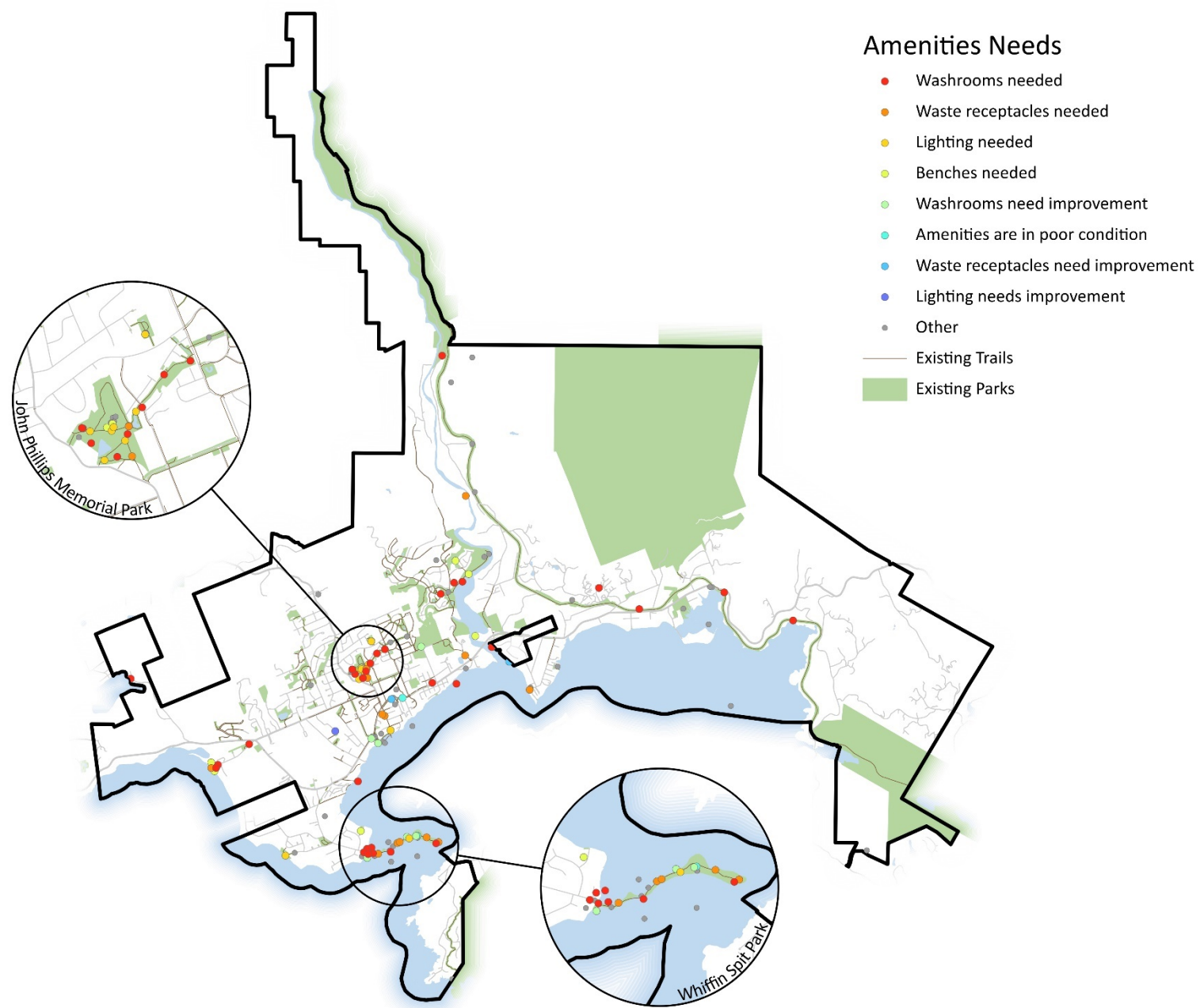
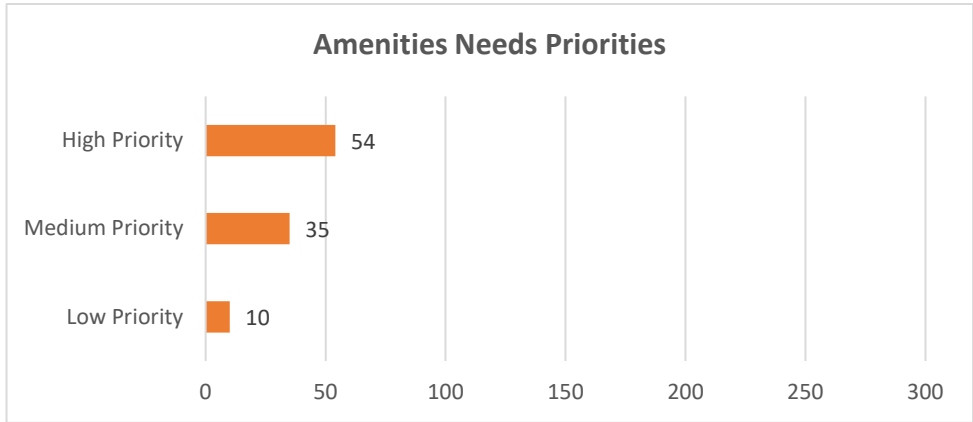
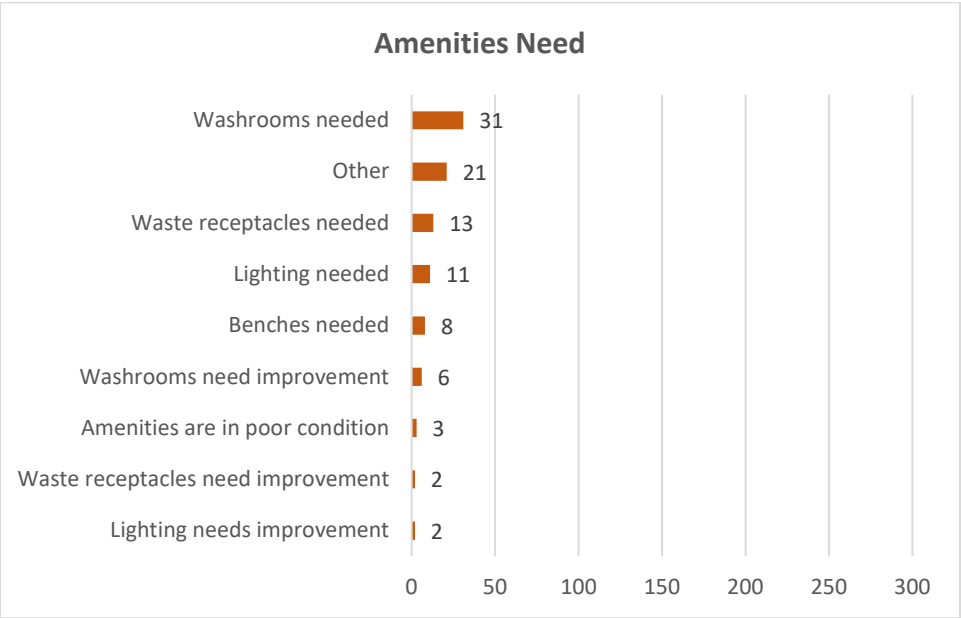
Sports Needs

Survey participants identified the greatest needs for more kayak launch locations (3) and facilities for other sports (e.g. disc golf, bouldering) (2).



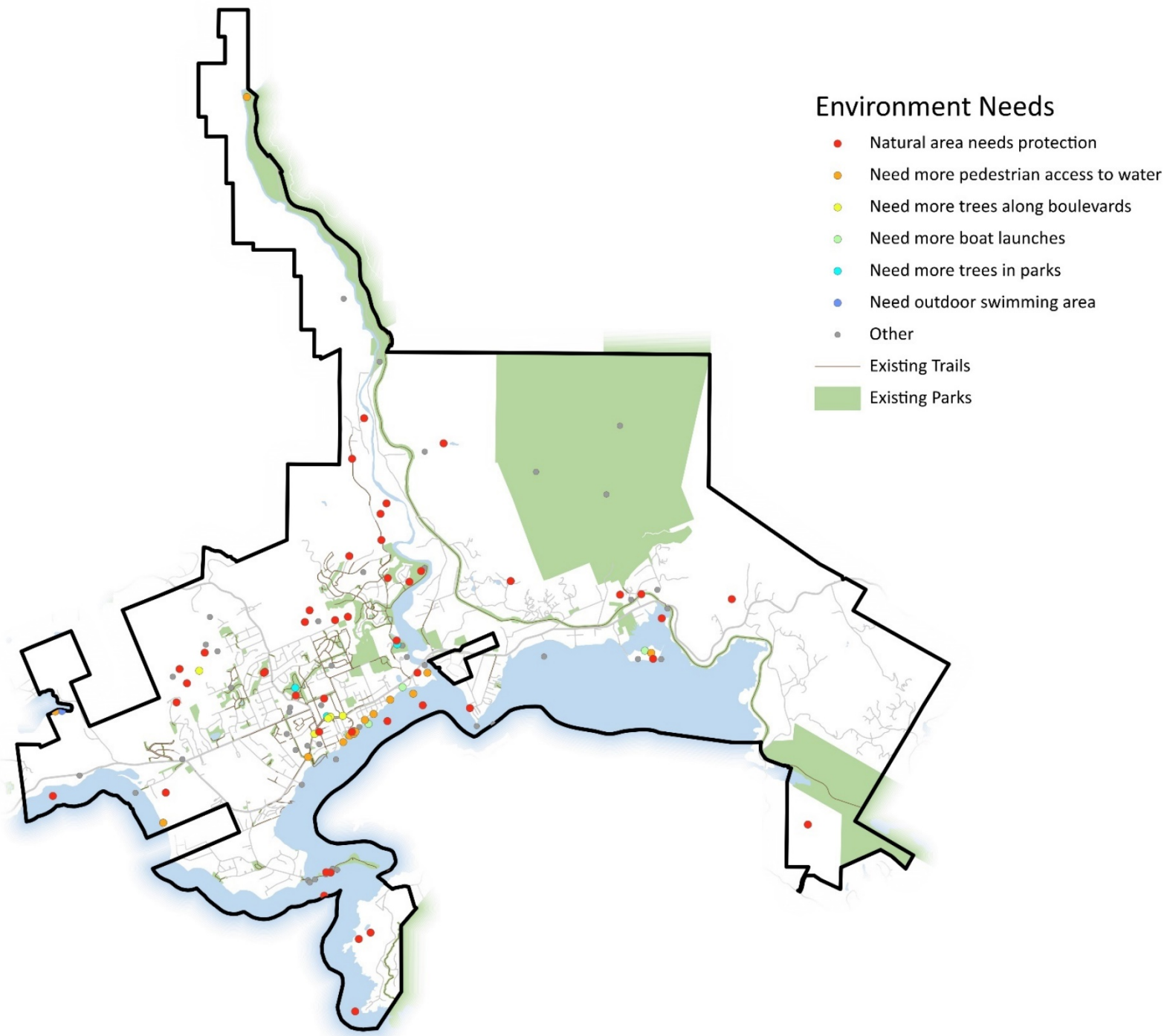
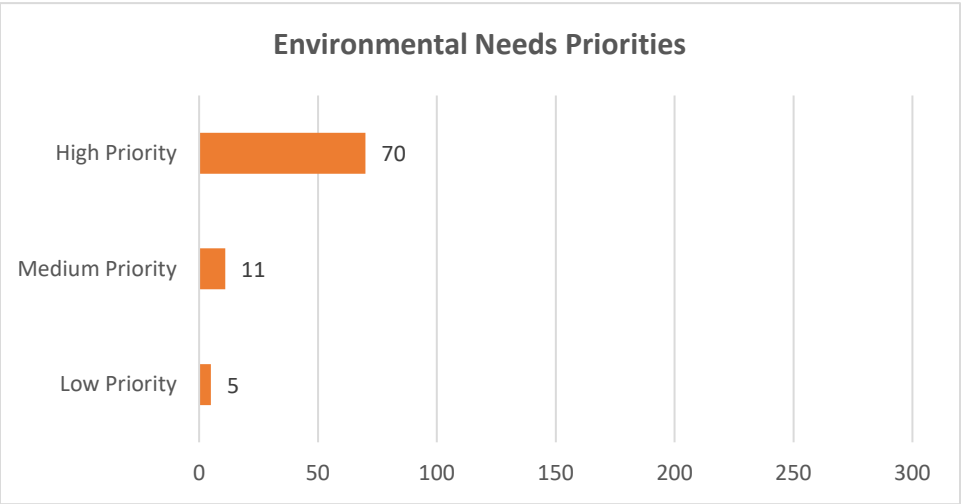
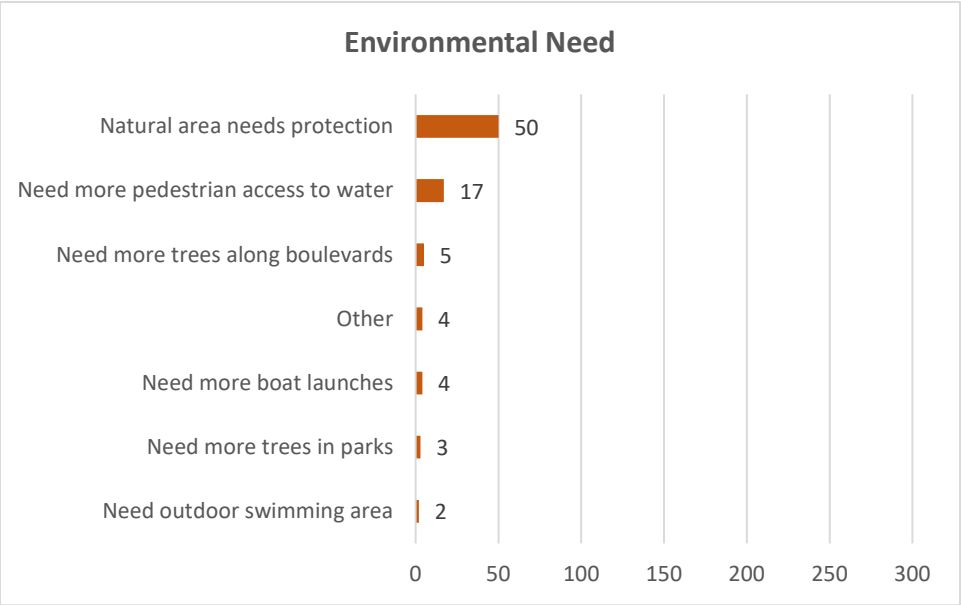
Amenities Needs

Survey participants identified the greatest need for washrooms facilities in parks, trails, and recreation facilities. Participants also commented on other needs related to parking improvements (4), more signage (4), and more boat launch access (2).



Environmental Needs

Survey participants identified the greatest environmental need for more protection of natural areas.



PART TWO

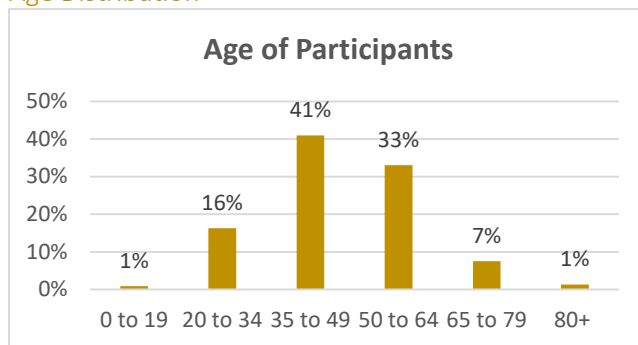
Community Online Survey

As part of the engagement process for Sooke's Transportation Master Plan, an online community survey was used to collect input on current transportation challenges and priorities for future improvements. The online survey was available from January 9, 2019 to February 26, 2019 and completed by 346 community members.

Survey Participants

Participants were encouraged to share some basic demographic questions to provide a better understanding of their needs and to what extent participants represent the broader community.

Age Distribution



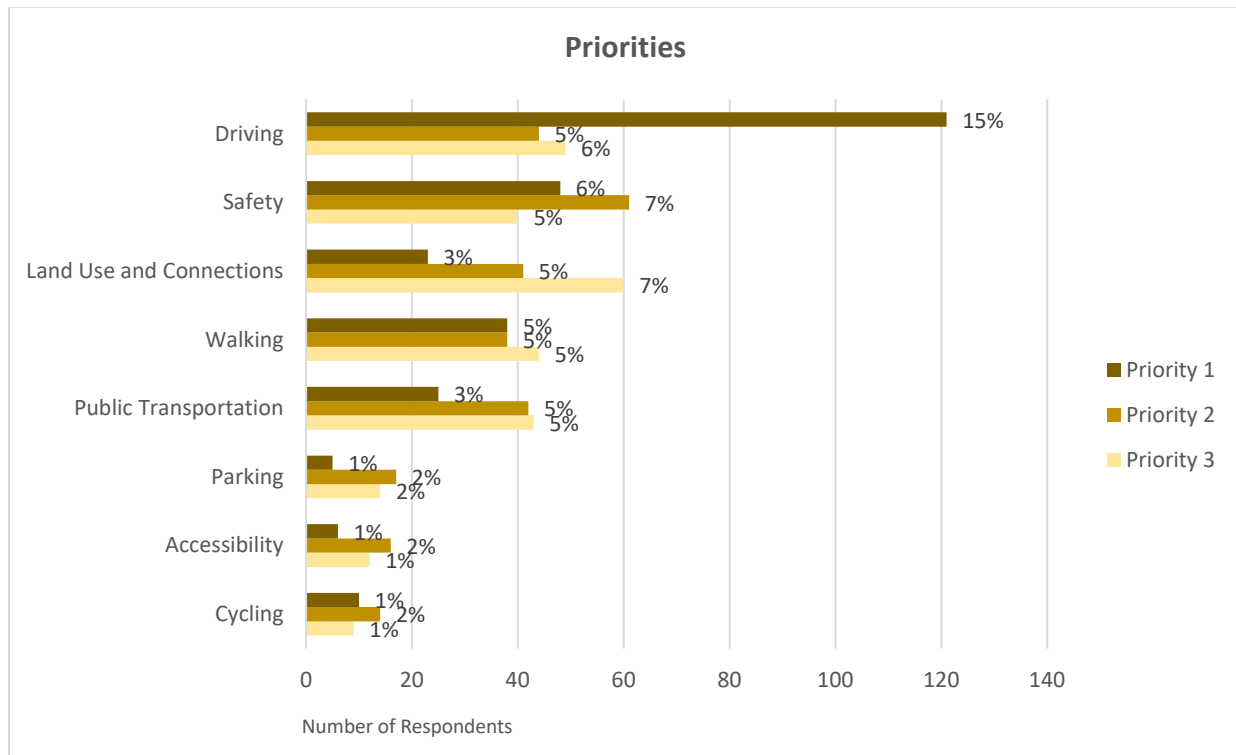
The survey received the most responses from adults ages 35 to 49. There are notably less responses from youth under 19 and adults 80 and older.

Gender

Sixty-two percent of survey participants were female and 32 percent were male. Six percent of participants preferred not to disclose their gender.

Priorities

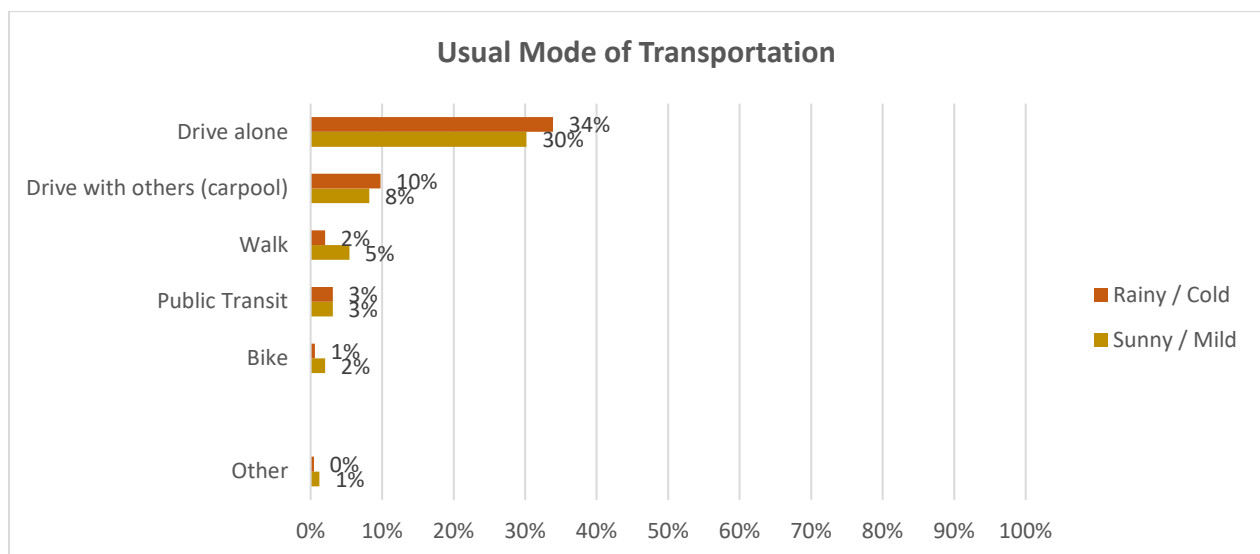
Survey participants were asked to rank the top 3 aspects of Sooke's transportation system that were most important to them. The graph below summarizes responses from participants. Percentages were calculated from the total number of times priorities were ranked. Driving was ranked the most frequently as the number priority and received an average ranking of 1.6. Safety received the second highest ranking of 1.9. Cycling was not prioritized by many participants but those that did gave it a high ranking.



Current Travel Patterns and Challenges

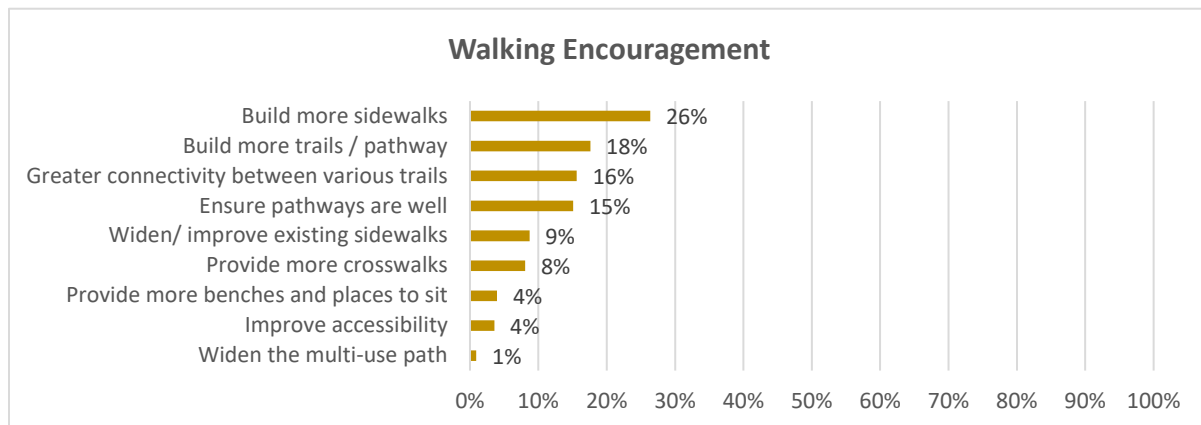
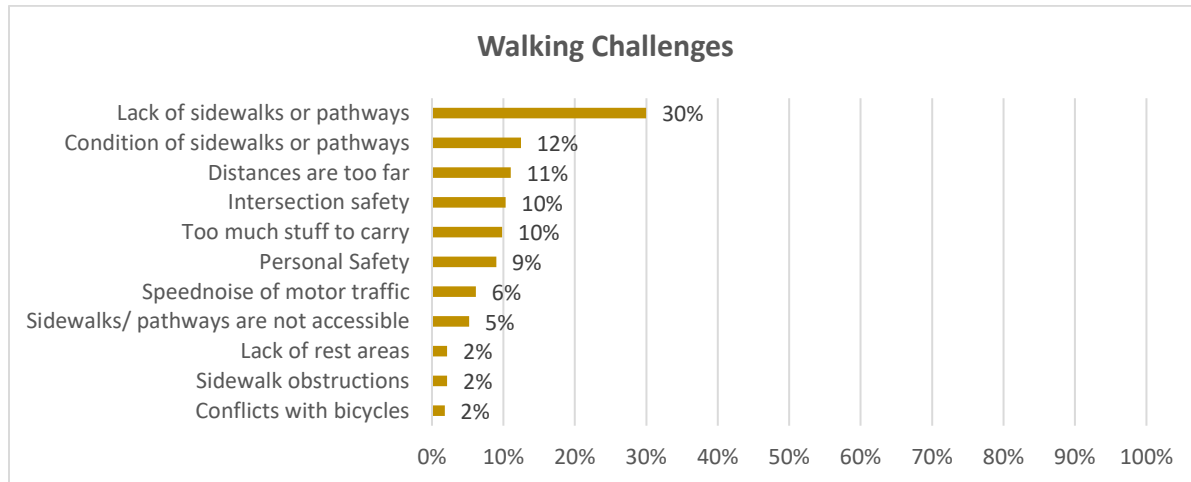
Usual Mode of Transportation

Survey participants were asked to report on their usual mode of transportation on a typical sunny / mild day and on a rainy / cold day. The graph below summarizes their responses. Generally, participants' mode of transportation does not change depending on weather. Some participants reported that they walk or bike more when it is sunny / mild.



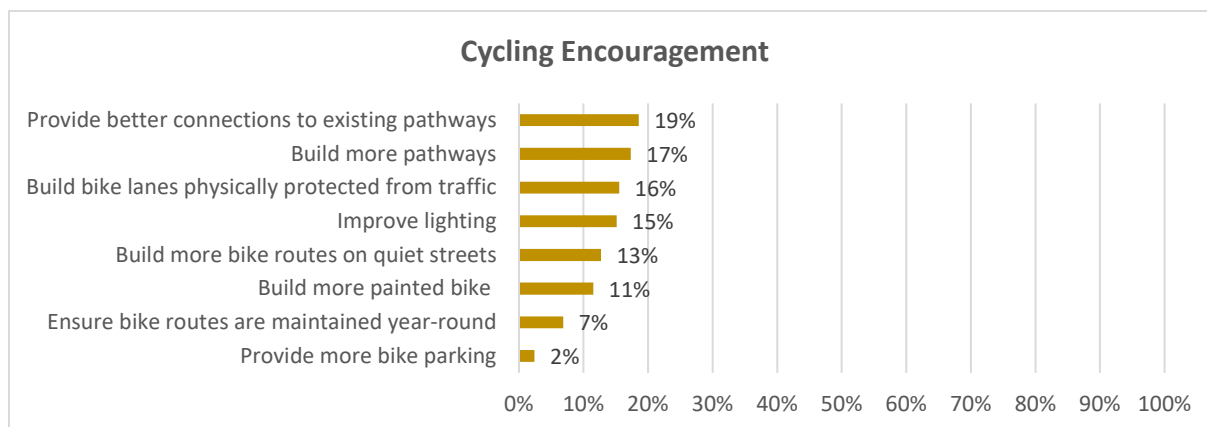
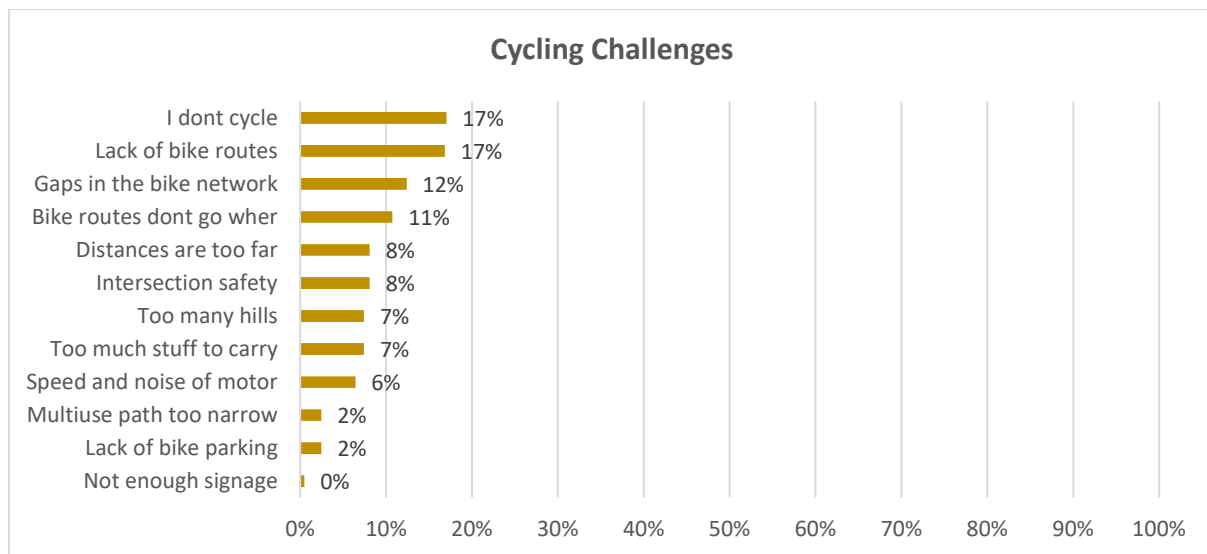
Walking

Participants were asked to indicate what they thought were the 3 main challenges for walking in Sooke and 3 areas that could be improved to encourage them to walk more. Notably, participants thought that the lack of sidewalks or pathways are the biggest challenges and suggested that building more connected sidewalks, trails, and pathways would help encourage more walking.



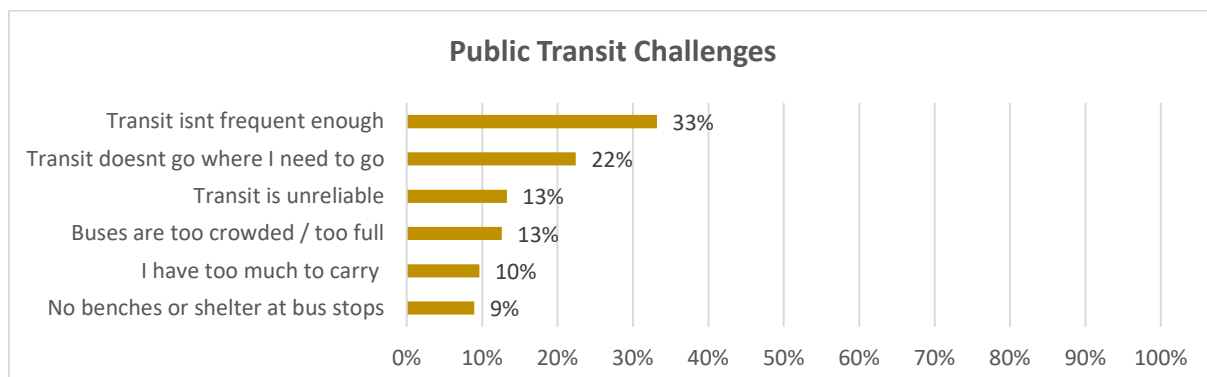
Cycling

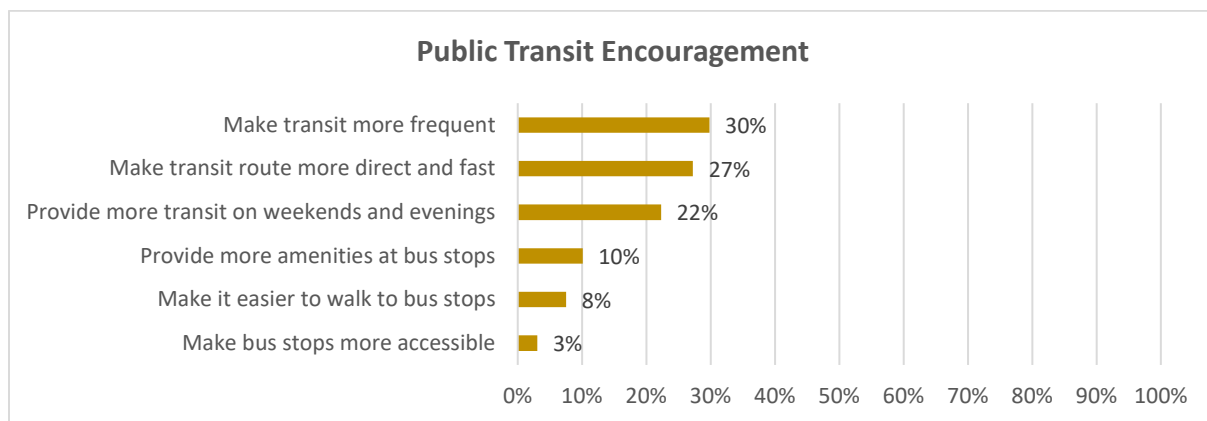
Participants were asked to indicate what they thought were the 3 main challenges for cycling in Sooke and 3 areas that could be improved to encourage them to cycle more. Seventeen percent of participants who responded to the question do not cycle. Of the respondents that cycle, 17 percent reported that there is a lack of bike routes and 22 percent reported challenges of connectivity and routes. These areas of challenges are also the main areas of improvements participants thought could help encourage them to cycle more.



Public Transit

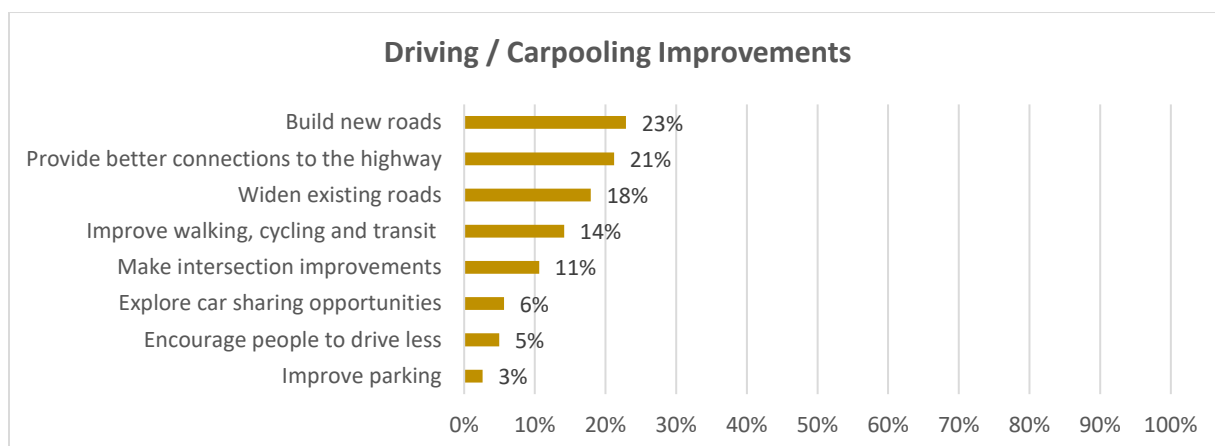
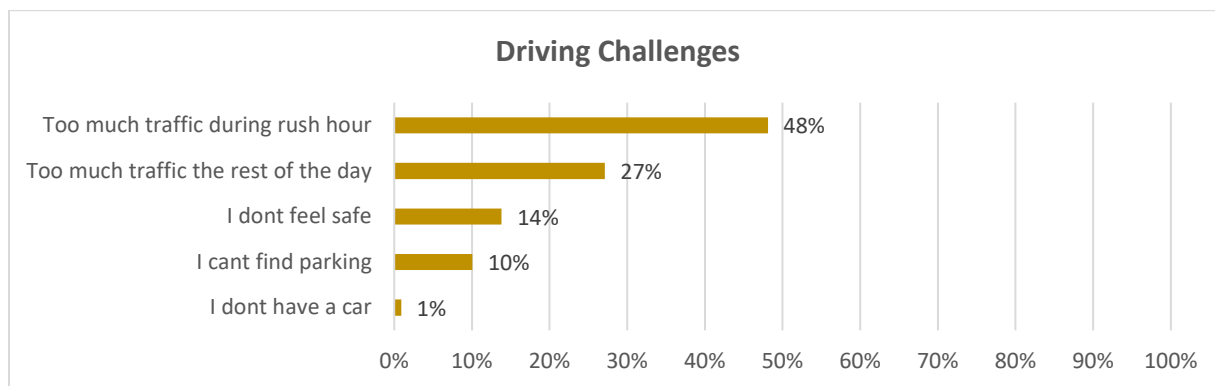
Participants were asked to indicate what they thought were the 3 main challenges for taking public transit in Sooke and 3 areas that could be improved to encourage them take public transit more. Thirty-three percent of participants reported that public transit isn't frequent enough and 22 percent reported that transit doesn't go where they need to go. Generally, participants reported that more frequent and reliable public transit services will encourage them to take public transit more.





Driving

Participants were asked to indicate what they thought were the 3 main challenges for driving in Sooke and 3 areas that could be improved for driving or carpooling. The main challenge identified by participants is traffic, both during rush hour (48 percent) and throughout the day (27 percent). Participants reported that building new roads (23 percent) and improving connections (21 percent) and existing roads (18 percent) would improve driving / carpooling. Twenty-five percent of participants thought that opportunities to explore other transportation modes and car-sharing can help reduce the need to drive in Sooke.

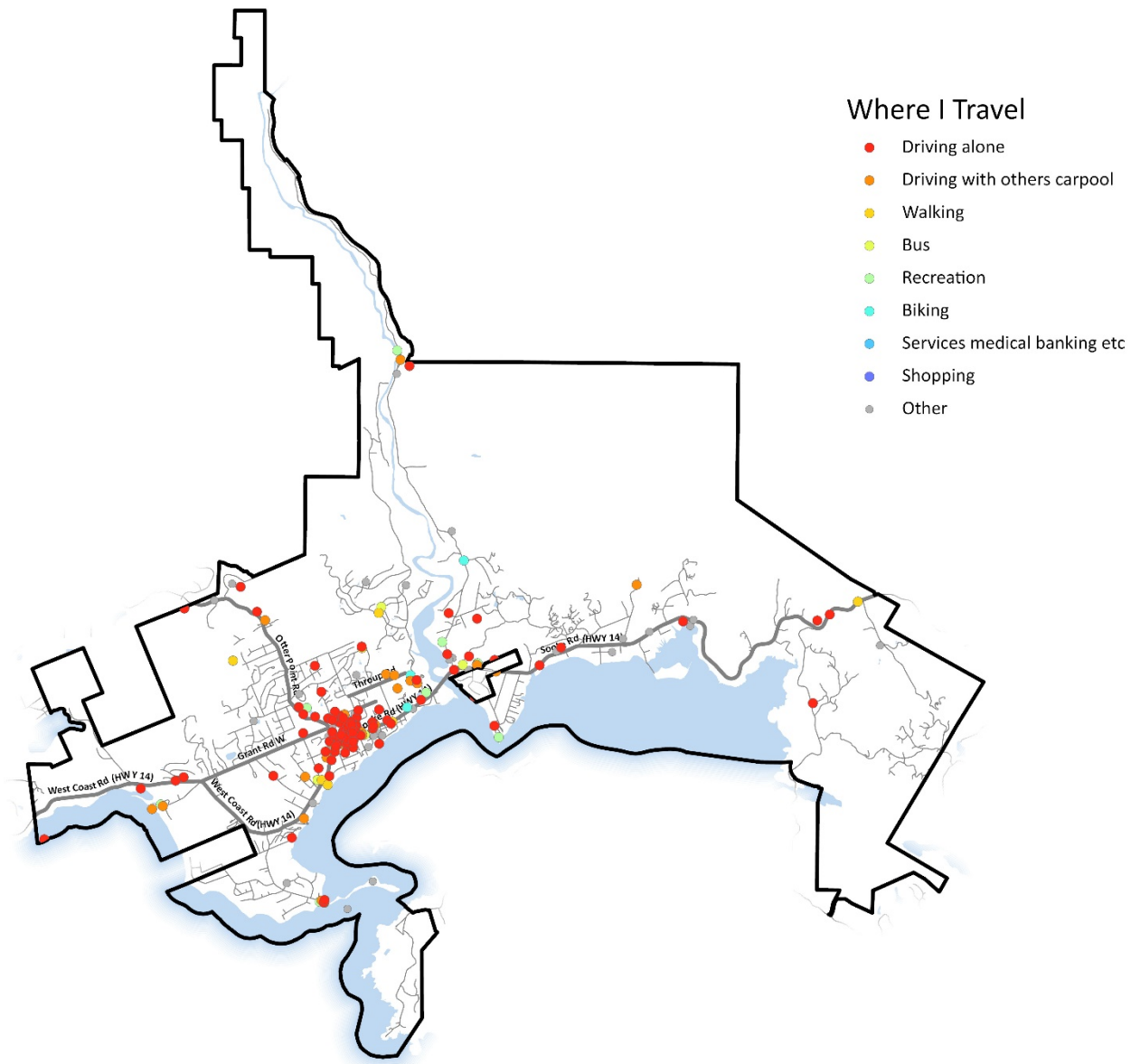
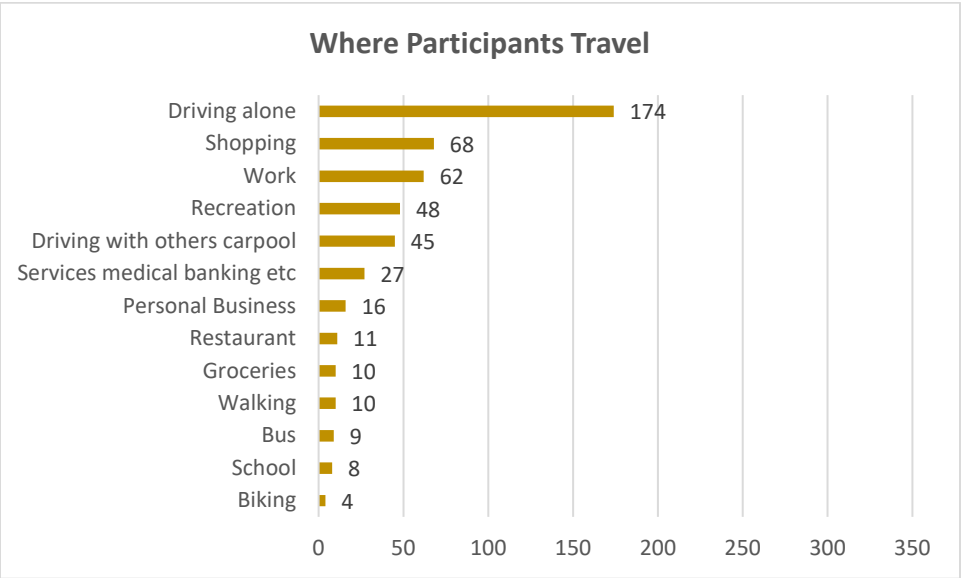


Issues and Opportunities

Survey participants were asked to identify where they travel in Sooke and transportation issues they encounter on a map by dropping markers on specific locations. Participants were able to choose from 6 markers related to where they travel, walking issues, biking issues, parking issues, driving issues, and transit issues. Participants also had the option of providing additional comments if they selected ‘other’ and identified a need not listed. Often, comments provided were issues already listed. A summary of themes mentioned by at least two participants are included below. Verbatim comments are included in the Appendix.

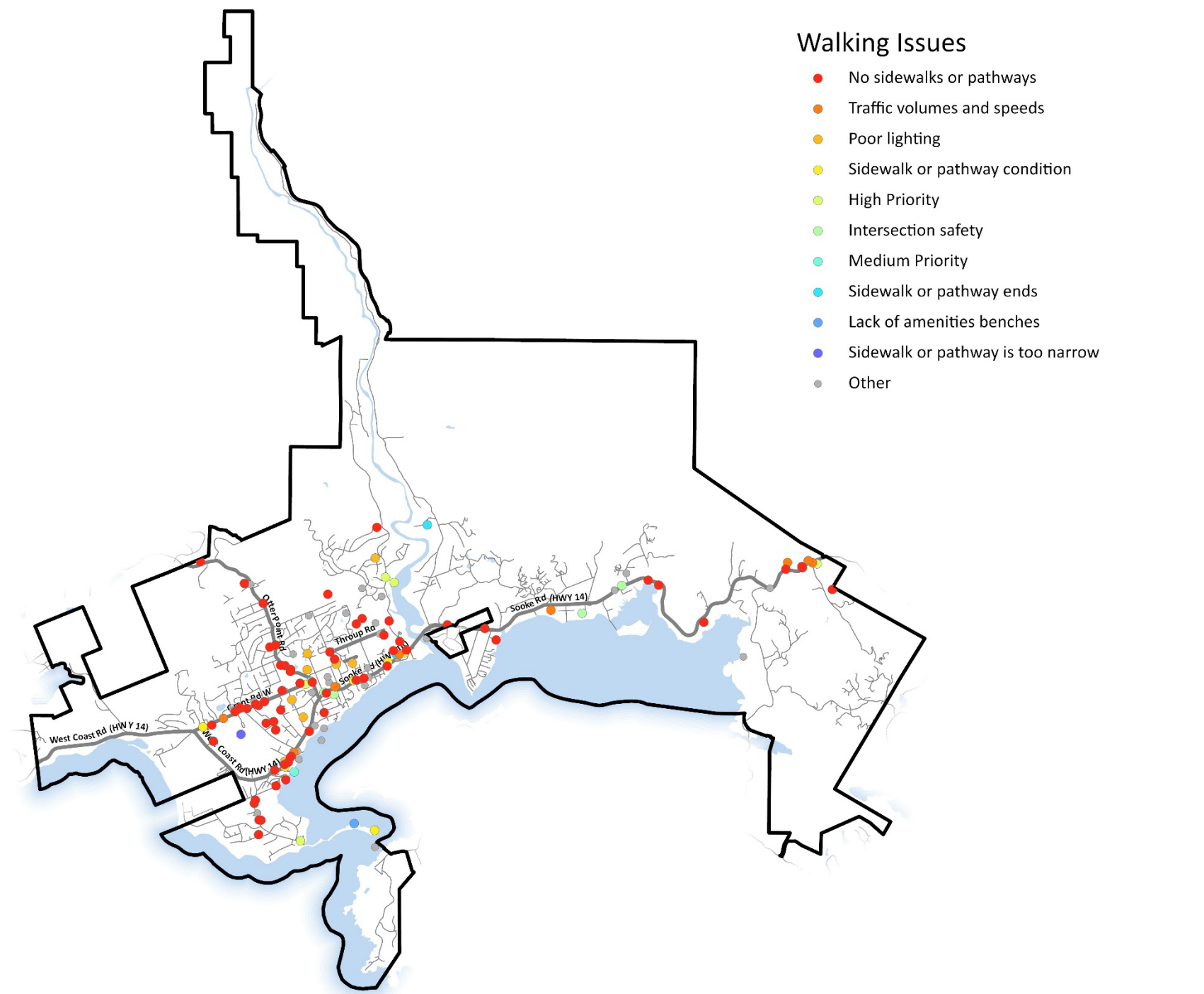
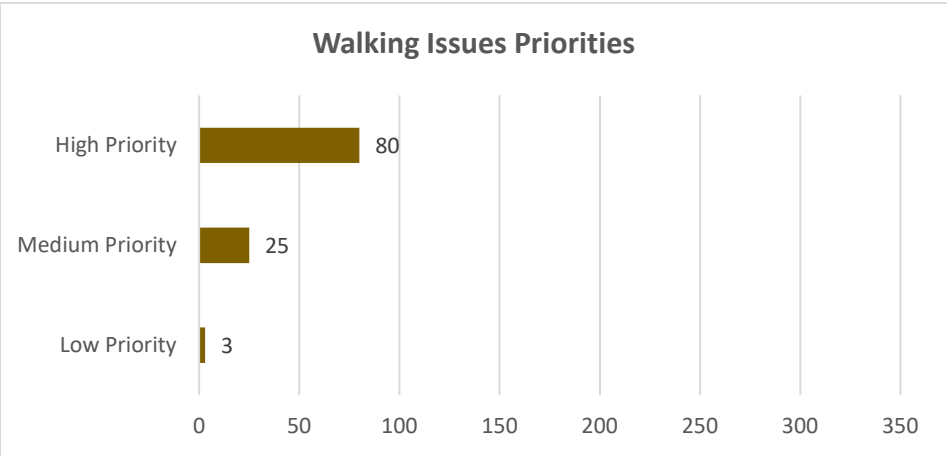
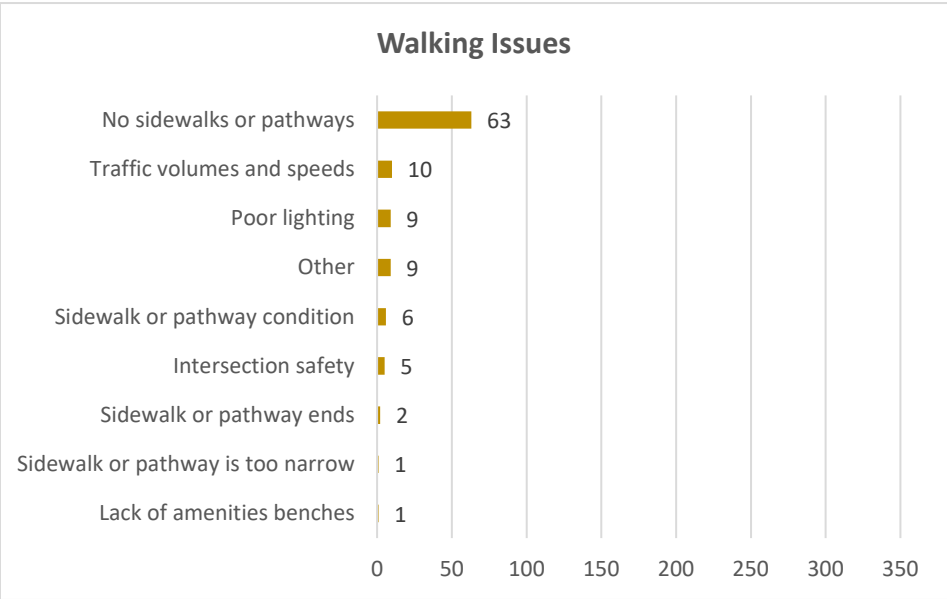
Where Participants Travel

Survey participants identified where they travel in Sooke, the mode they typically use to travel there, and the purpose of their trips. A majority of participants reported that they drive alone and commute to various destinations including work, shops, or recreation.



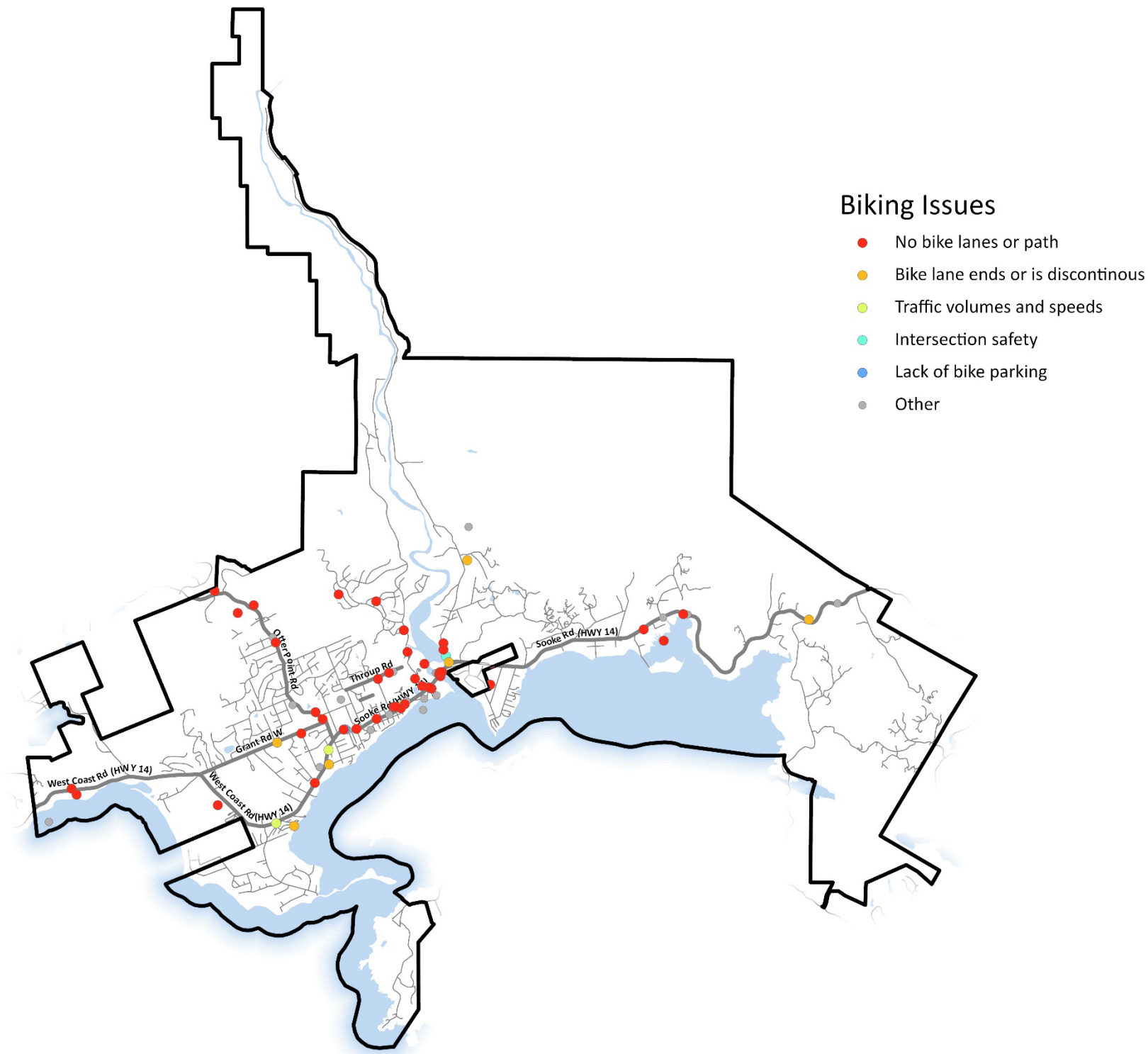
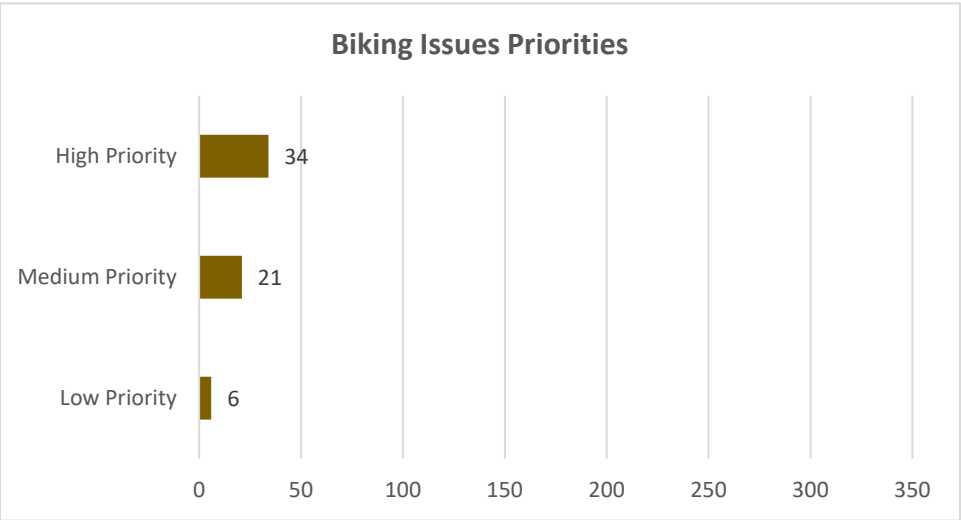
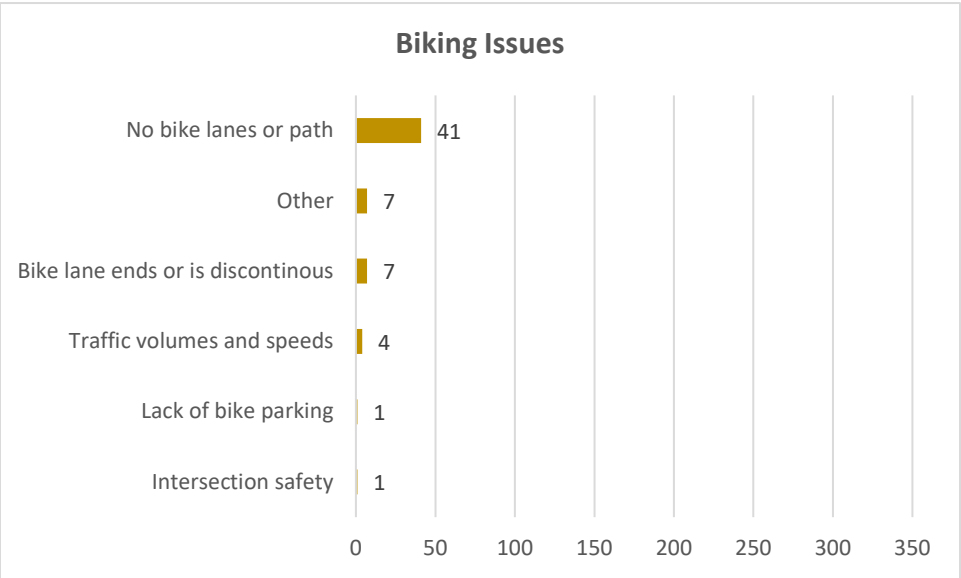
Walking Issues

Survey participants identified the great issue as the lack of sidewalks or pathways.



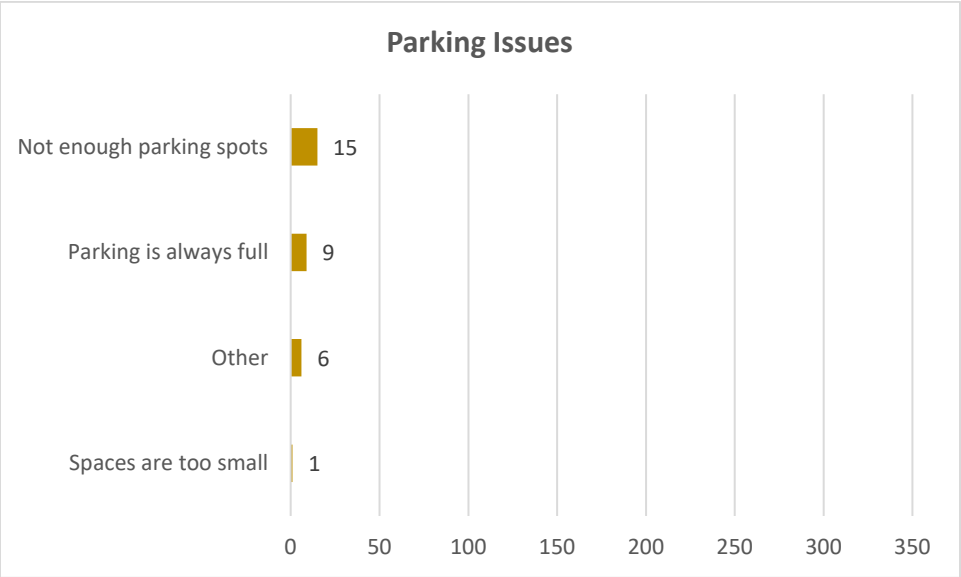
Biking Issues

Survey participants identified the greatest issue as the lack of bike lanes or paths. Participants also commented on difficulty of biking on the steep terrain (2).



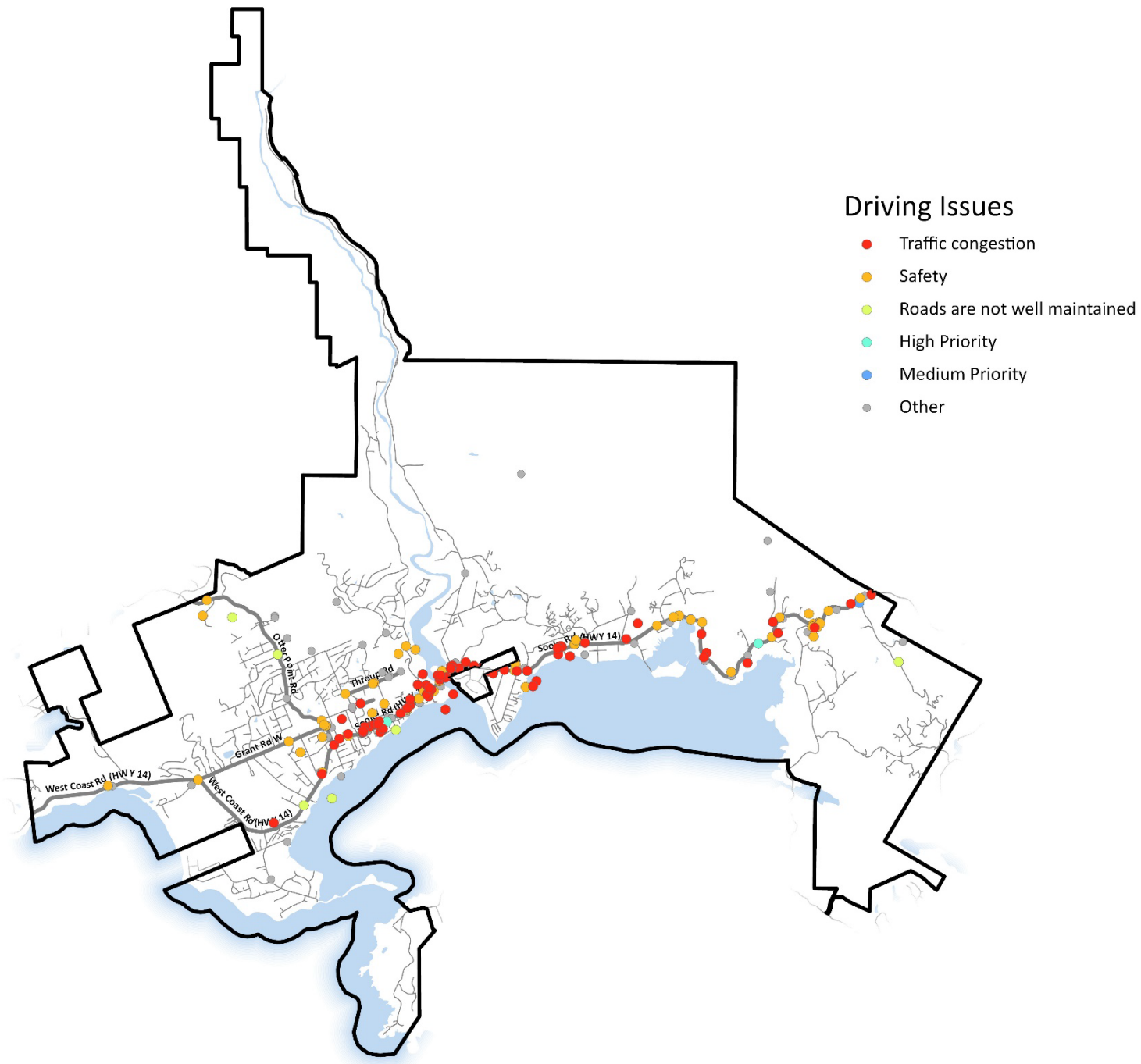
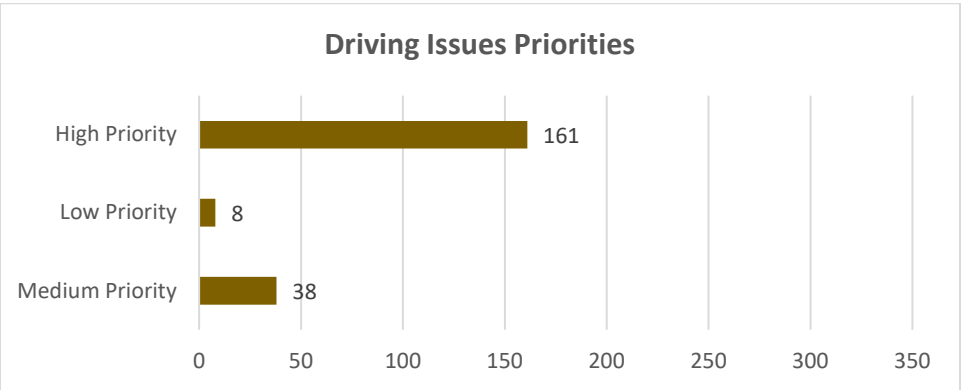
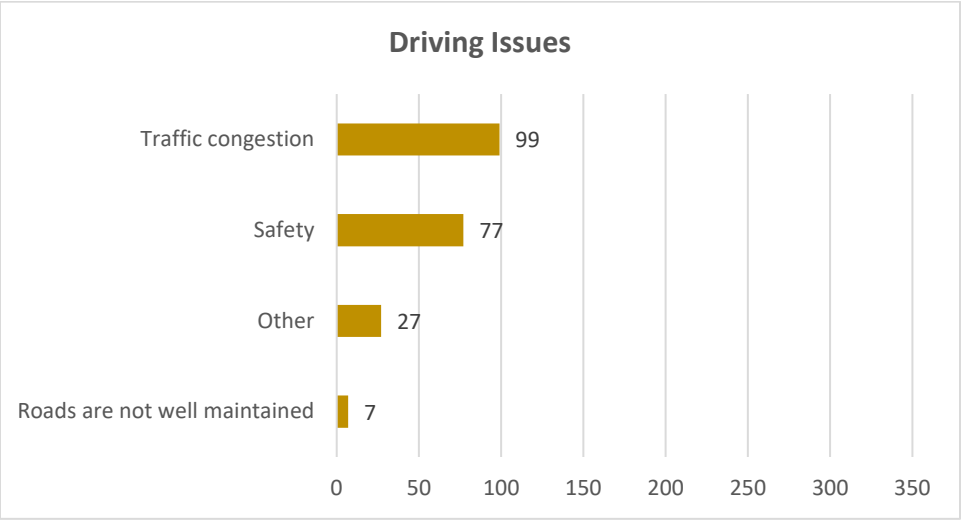
Parking Issues

Survey participants identified the greatest issue as the availability of parking spots.



Driving Issue

Survey participants identified the greatest issues as traffic congestion and safety. Participants also commented on the need for alternative routes that go through Sooke (7), and issues of flooding on roads (2).



Transit Issue

Survey participants identified the greatest issue as the frequency of buses. Participants also commented on the lack of adequate bus pullouts (5).

