



EXERCISE | EXERCISE | EXERCISE

EVACUATION ORDER ISSUED

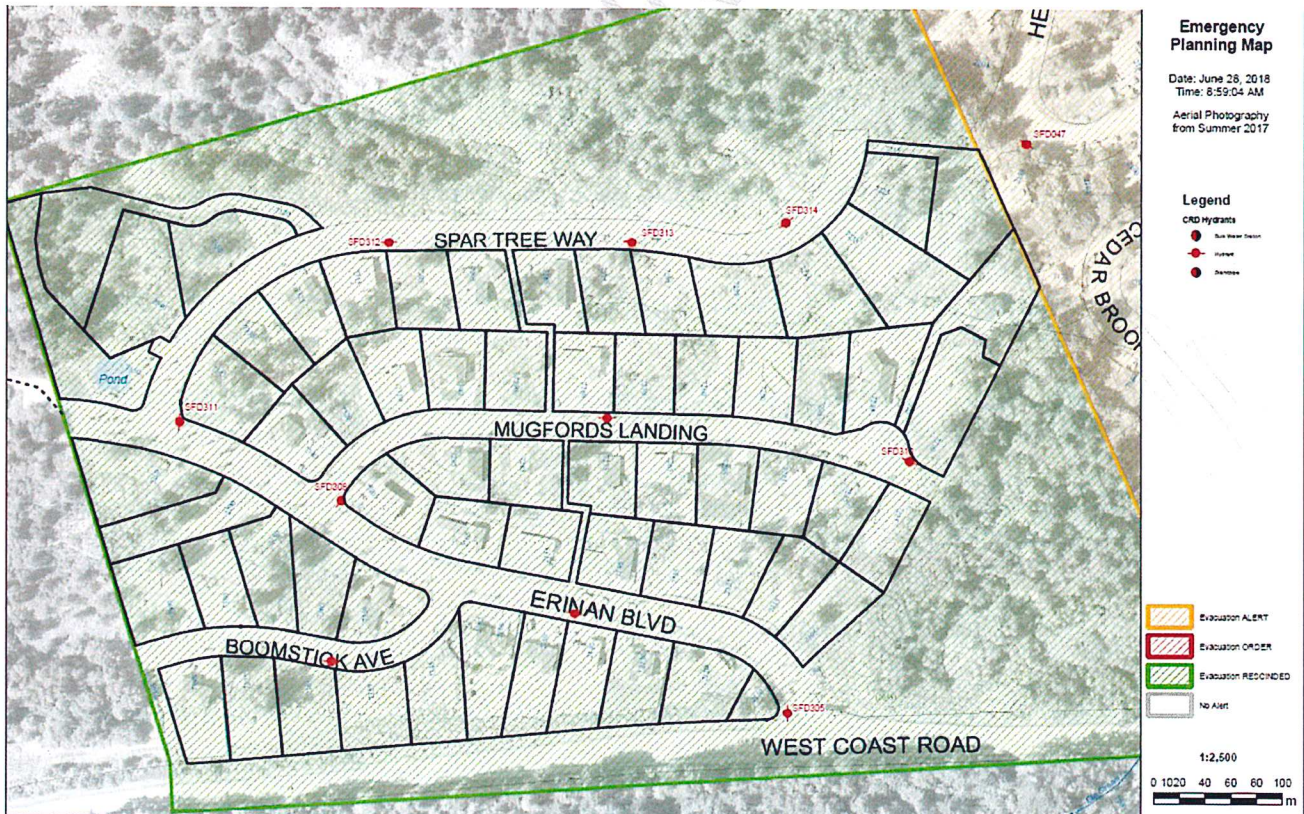
****DoS mock annual training exercise****

Date: June 28, 2018 Time: 7:00pm

An Evacuation Order has been issued by Mayor Maja Tait of the District of Sooke at the Emergency Operations Centre (EOC) in Sooke. A wildland fire is threatening homes in the *Erinan Estates* Development near the western boundary of the District of Sooke. Due to the immediate danger to **life safety and property**, members of the Sooke RCMP detachment will be expediting the Evacuation Order, immediately in effect for the following areas:

Summary of address ranges within EVACUATION ORDER AREA:

- Broomstick Ave 7345 – 7395
- Erinan Blvd 2085 – 2200
- Mugford's Landing 7210 – 7340
- Spar Tree Way 7215 – 7350



WHAT YOU SHOULD DO:

- You must leave the area **immediately**
- Follow Sooke Road and register at Emergency Reception Centre located at the Edward Milne Community School (EMCS) gym at 6218 Sooke Road.
- If you need transportation assistance from the area please contact the Emergency Operations Centre (EOC) at: 250-642-5798
- Close all windows and doors.
- Shut off all gas and electrical appliances, other than refrigerators and freezers.
- Close gates (latch) but do not lock.
- Gather your family: take a neighbour or someone who needs help.
- Take your grab and go bag (emergency kit), including critical items (medicine, purse, wallet and insurance information, only if they are immediately available.
- Take pets in pet kennels or on leash – don't forget pet food and medicines.
- Do not use more vehicles than you have to.
- Do not use the telephone unless you need emergency service.

YOU MUST LEAVE THE AREA IMMEDIATELY

For more information contact:

Kenn Mount, Emergency Operations Centre Director (EOC) *or*
Julie Barlow, Emergency Operations Centre (EOC) Information Officer
Phone: **250-642-5798**

Signed by Local Authority:



Maja Tait, Mayor
District of Sooke

****DoS mock annual training exercise****